

Air Operations All Fires Overview

Operational Period 8/26/2021

Divide Complex: Balsinger MT-HLF-005079
8,584 Acres @ 1547 8/20
Woods Creek - MT-HLF-000258
55,854 Acres @ 0051 8/23



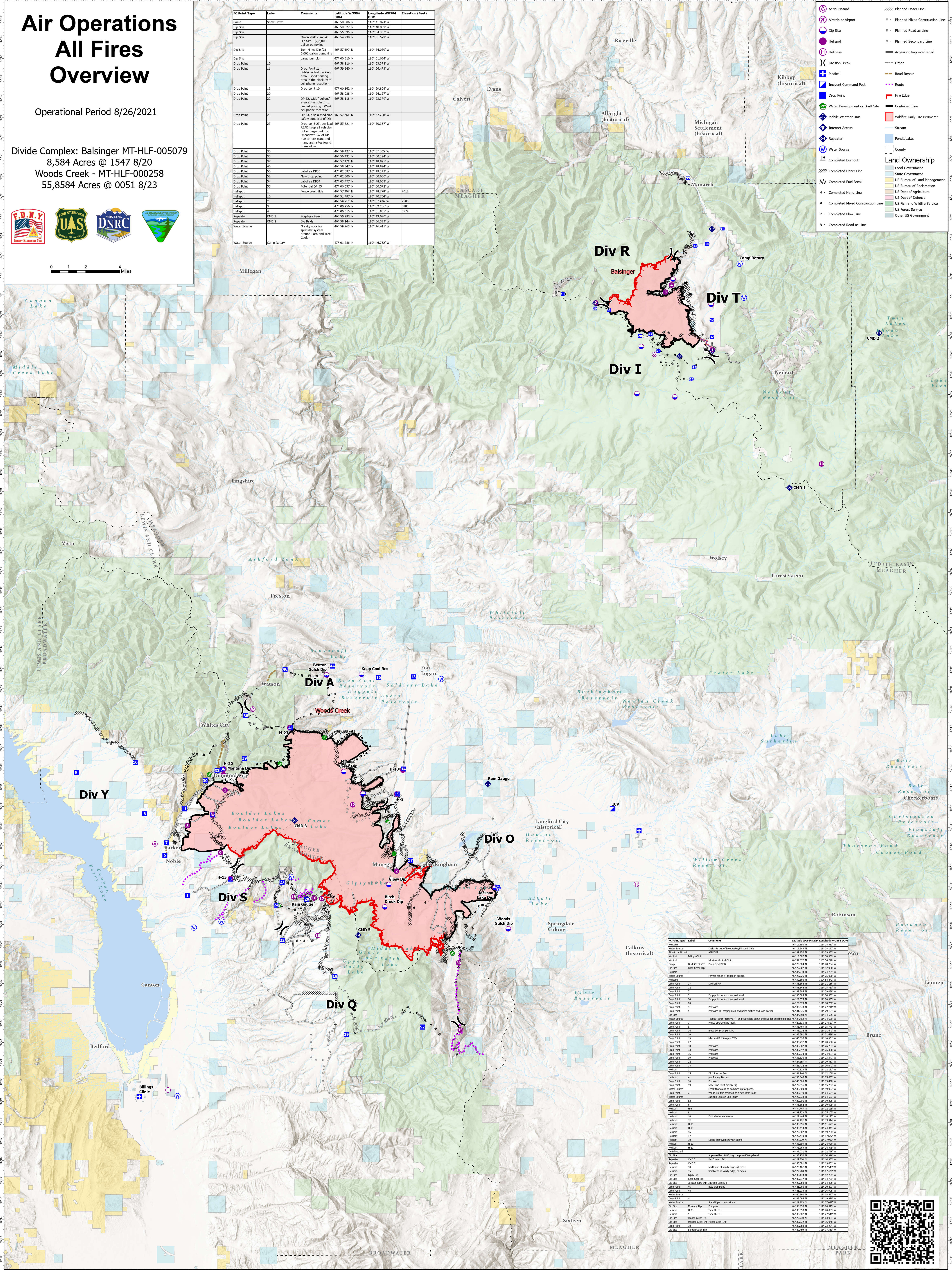
FC Point Type	Label	Comments	Latitude WGS84 DDM	Longitude WGS84 DDM	Elevation (Feet)
Camp	Show Down		46° 59.900' N	110° 41.824' W	
Dip Site			46° 59.627' N	110° 48.867' W	
Dip Site			46° 59.095' N	110° 54.387' W	
Dip Site		Crater Park Burnline	46° 54.938' N	110° 51.579' W	
Dip Site		Iron Mines Dip (2)	46° 57.490' N	110° 54.059' W	
Dip Site		6,000 gallon pumpkins	47° 00.910' N	110° 51.684' W	
Drop Point	10		46° 58.116' N	110° 53.378' W	
Drop Point	11	Drop Point 11, Balsinger fire parking area. Good parking area in the block with cell phone reception.	46° 59.340' N	110° 56.473' W	
Drop Point	13	Drop point 10	47° 00.162' N	110° 59.894' W	
Drop Point	20		46° 58.638' N	110° 54.137' W	
Drop Point	22	DP 22, wide "pullout" area at base of hill, limited parking. Weak cell phone reception.	46° 58.118' N	110° 53.779' W	
Drop Point	23	DP 23, also a med size safety zone is S of DP	46° 57.261' N	110° 52.788' W	
Drop Point	25	Drop point 25, see lead READ keep all vehicles out of large park "meadow" SW of DP due to new client and many arch sites found in meadow.	46° 55.821' N	110° 50.317' W	
Drop Point	30		46° 59.437' N	110° 57.507' W	
Drop Point	35		46° 56.431' N	110° 50.124' W	
Drop Point	37		46° 57.071' N	110° 48.823' W	
Drop Point	48		46° 58.817' N	110° 48.814' W	
Drop Point	50	Label as DP50	47° 02.697' N	110° 49.143' W	
Drop Point	52	New drop point	47° 02.696' N	110° 50.030' W	
Drop Point	54	Label as DP54	47° 03.077' N	110° 48.202' W	
Drop Point	55	Revised DP 55	47° 06.037' N	110° 50.572' W	
Helipad	1	Fence West Side	46° 57.307' N	110° 48.778' W	7012
Helipad	10		46° 53.807' N	110° 60.704' W	7500
Helipad	2		46° 59.712' N	110° 57.430' W	7500
Helipad	3		47° 00.256' N	110° 52.216' W	5883
Helipad	4		47° 00.615' N	110° 51.857' W	5779
Repeater	CMD 1	Murphy Peak	46° 59.291' N	110° 43.200' W	
Repeater	CMD 2	Sky Buggy	46° 58.144' N	110° 36.393' W	
Water Source		Gravel rock for portable system around Barn and Tree Coder	46° 59.903' N	110° 46.417' W	
Water Source		Camp Rotary	47° 01.680' N	110° 46.732' W	

Legend

- Aerial Hazard
- Airstrip or Airport
- Dip Site
- Helipad
- Helibase
- Division Break
- Drop Point
- Water Development or Draft Site
- Mobile Weather Unit
- Internet Access
- Repeater
- Water Source
- Completed Burnout
- Completed Dozer Line
- Completed Fuel Break
- Completed Hand Line
- Completed Mixed Construction Line
- Completed Flow Line
- Completed Road as Line
- Planned Dozer Line
- Planned Mixed Construction Line
- Planned Road as Line
- Planned Secondary Line
- Access or Improved Road
- Road Repair
- Route
- Fire Edge
- Contained Line
- Wildfire Daily Fire Perimeter
- Stream
- Ponds/Lakes
- County

Land Ownership

- Local Government
- State Government
- US Bureau of Land Management
- US Dept of Agriculture
- US Dept of Defense
- US Fish and Wildlife Service
- US Forest Service
- Other US Government



FC Point Type	Label	Comments	Latitude WGS84 DDM	Longitude WGS84 DDM
Water Source		Draft site out of Broadwater Reservoir ditch	46° 15.242' N	111° 28.152' W
Medical or Airport	ASPH/RT		46° 32.262' N	111° 27.212' W
Medical	Billings Clinic		46° 15.307' N	111° 30.559' W
Medical	Duck Creek VED	NE Vets Medical Clinic	46° 32.877' N	111° 34.239' W
Drop Point	Bach Creek Dip		46° 29.862' N	111° 13.988' W
Water Source		Haynes search #1 irrigation access	46° 38.286' N	111° 25.887' W
Drop Point	17	Drop Point	46° 31.344' N	111° 11.135' W
Drop Point	7	Drop point for approval and label	46° 32.265' N	111° 29.988' W
Drop Point	24	Drop point for approval and label	46° 29.935' N	111° 26.985' W
Drop Point	20	Proposed	46° 20.239' N	111° 18.775' W
Drop Point	11	Proposed	46° 31.526' N	111° 29.294' W
Drop Point	5	Proposed DP staging area and porta potties and road barrier	46° 35.269' N	111° 14.619' W
Water Source		Trapper Ranch "reservoir" on private land depth and size for possible dip site	46° 34.762' N	111° 14.627' W
Drop Point	9		46° 35.746' N	111° 29.272' W
Drop Point	18	irrigation DP 18 dip per O&G	46° 39.261' N	111° 18.421' W
Drop Point	39		46° 36.293' N	111° 18.429' W
Drop Point	27		46° 30.227' N	111° 25.558' W
Drop Point	23		46° 30.238' N	111° 25.238' W
Drop Point	33	Proposed	46° 30.897' N	111° 25.588' W
Drop Point	36	Proposed	46° 30.524' N	111° 25.962' W
Drop Point	22	Proposed	46° 27.882' N	111° 25.512' W
Drop Point	18	Proposed	46° 24.248' N	111° 18.429' W
Helipad	2	DP 15 as per O&G	46° 38.827' N	111° 13.131' W
Helipad	4	per Trapper Ranch	46° 33.446' N	111° 23.447' W
Drop Point	38	Proposed	46° 30.248' N	111° 25.248' W
Drop Point	19	New Drop Point for O&G	46° 23.516' N	111° 15.794' W
Water Source		Crater Lake Reservoir	46° 31.484' N	111° 18.429' W
Drop Point	28	Would like this updated as a new Drop Point	46° 30.019' N	111° 18.429' W
Water Source		Crater Lake on Draft Ranch	46° 29.972' N	111° 18.429' W
Drop Point	12		46° 29.969' N	111° 25.248' W
Drop Point	46		46° 30.248' N	111° 25.248' W
Drop Point	45		46° 30.248' N	111° 25.248' W
Drop Point	41		46° 30.248' N	111° 25.248' W
Drop Point	35		46° 30.248' N	111° 25.248' W
Drop Point	34		46° 30.248' N	111° 25.248' W
Drop Point	32		46° 30.248' N	111° 25.248' W
Drop Point	31		46° 30.248' N	111° 25.248' W
Drop Point	30		46° 30.248' N	111° 25.248' W
Drop Point	29		46° 30.248' N	111° 25.248' W
Drop Point	26		46° 30.248' N	111° 25.248' W
Drop Point	25		46° 30.248' N	111° 25.248' W
Drop Point	24		46° 30.248' N	111° 25.248' W
Drop Point	23		46° 30.248' N	111° 25.248' W
Drop Point	22		46° 30.248' N	111° 25.248' W
Drop Point	21		46° 30.248' N	111° 25.248' W
Drop Point	20		46° 30.248' N	111° 25.248' W
Drop Point	19		46° 30.248' N	111° 25.248' W
Drop Point	18		46° 30.248' N	111° 25.248' W
Drop Point	17		46° 30.248' N	111° 25.248' W
Drop Point	16		46° 30.248' N	111° 25.248' W
Drop Point	15		46° 30.248' N	111° 25.248' W
Drop Point	14		46° 30.248' N	111° 25.248' W
Drop Point	13		46° 30.248' N	111° 25.248' W
Drop Point	12		46° 30.248' N	111° 25.248' W
Drop Point	11		46° 30.248' N	111° 25.248' W
Drop Point	10		46° 30.248' N	111° 25.248' W
Drop Point	9		46° 30.248' N	111° 25.248' W
Drop Point	8		46° 30.248' N	111° 25.248' W
Drop Point	7		46° 30.248' N	111° 25.248' W
Drop Point	6		46° 30.248' N	111° 25.248' W
Drop Point	5		46° 30.248' N	111° 25.248' W
Drop Point	4		46° 30.248' N	111° 25.248' W
Drop Point	3		46° 30.248' N	111° 25.248' W
Drop Point	2		46° 30.248' N	111° 25.248' W
Drop Point	1		46° 30.248' N	111° 25.248' W

