

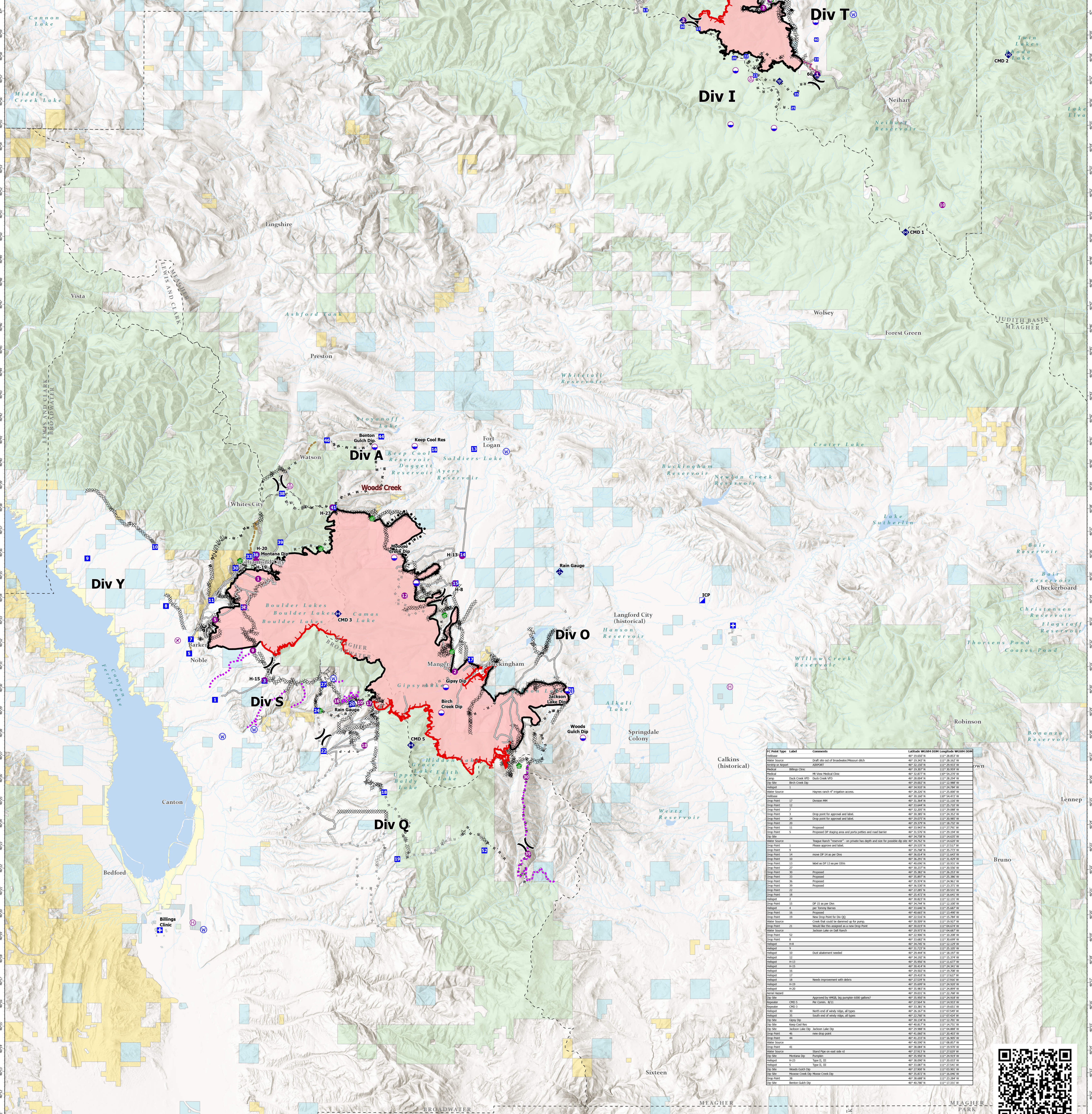
Air Operations All Fires Overview

Operational Period 8/27/2021

Divide Complex: Balsinger MT-HLF-005079
8,584 Acres @ 1547 8/20
Woods Creek - MT-HLF-000258
55,411 Acres @ 1015 8/24



FC Point Type	Label	Comments	Latitude WGS84 DDM	Longitude WGS84 DDM	Elevation (Feet)
Camp	Show Down		46° 59.900' N	110° 41.824' W	
Dip Site			46° 59.627' N	110° 48.867' W	
Dip Site			46° 55.095' N	110° 54.307' W	
Dip Site		Chow Park Burnline Dip Site - (250,000 gallon per minute)	46° 54.538' N	110° 53.509' W	
Dip Site			46° 57.490' N	110° 54.059' W	
Dip Site		Iron Mines Dip (2) 6,000 gallon per minute	47° 00.910' N	110° 51.684' W	
Drop Point	10	Drop point 10	46° 58.116' N	110° 53.378' W	
Drop Point	11	Drop Point 11, Balsinger fuel parking area - Good parking area in the back with cell phone reception.	46° 59.340' N	110° 56.473' W	
Drop Point	13	Drop point 13	47° 00.162' N	110° 59.894' W	
Drop Point	20	Drop point 20	46° 58.638' N	110° 54.157' W	
Drop Point	22	DP 22, wide "pullout" area at base of hill, limited parking. Weak cell phone reception.	46° 58.118' N	110° 53.379' W	
Drop Point	23	DP 23, also a med size safety zone is S of DP	46° 57.261' N	110° 52.788' W	
Drop Point	25	Drop point 25, see lead READ keep all vehicles out of large park "meadow" SW of DP due to new client and many arch sites found in meadow.	46° 55.821' N	110° 50.337' W	
Drop Point	30		46° 59.427' N	110° 57.507' W	
Drop Point	35		46° 56.431' N	110° 50.124' W	
Drop Point	37		46° 57.071' N	110° 48.823' W	
Drop Point	48		46° 58.817' N	110° 48.824' W	
Drop Point	50	Label as DP50	47° 02.697' N	110° 49.143' W	
Drop Point	52	New drop point	47° 02.696' N	110° 50.030' W	
Drop Point	54	Label as DP54	47° 03.017' N	110° 48.202' W	
Drop Point	55	Revised DP 55	47° 06.037' N	110° 50.572' W	
Helipad	1	Fence West Side	46° 57.307' N	110° 48.778' W	7012
Helipad	10		46° 53.807' N	110° 40.204' W	7500
Helipad	2		46° 59.712' N	110° 57.430' W	7500
Helipad	3		47° 00.250' N	110° 52.210' W	5883
Helipad	4		47° 00.615' N	110° 51.805' W	5779
Repeater	CHD 1	Murphy Peak	46° 59.291' N	110° 43.200' W	
Repeater	CHD 2	Big Baldy	46° 58.144' N	110° 36.393' W	
Water Source		Gravel rock for portable system around Barn and Tree Cooder	46° 59.903' N	110° 46.417' W	
Water Source		Camp Rotary	47° 01.680' N	110° 46.732' W	



FC Point Type	Label	Comments	Latitude WGS84 DDM	Longitude WGS84 DDM
Water Source		Draft site out of Breakwater Pressure ditch	46° 13.242' N	115° 28.152' W
Medical or Airport		ADP	46° 12.250' N	115° 25.250' W
Medical	Hilltop Clinic		46° 16.307' N	115° 30.500' W
Medical		18. Vena Medical Clinic	46° 12.877' N	115° 26.250' W
Camp	Duck Creek VED	Duck Creek VED	46° 20.802' N	115° 13.968' W
Dip Site	Bach Creek Dip		46° 34.800' N	115° 14.800' W
Water Source		Haynes search #1 irrigation access	46° 38.200' N	115° 25.800' W
Drop Point	17	Drop Point 17	46° 31.844' N	115° 11.150' W
Drop Point	7	Drop point for approval and label	46° 32.205' N	115° 29.988' W
Drop Point	24	Drop point for approval and label	46° 29.053' N	115° 26.985' W
Drop Point	20	Proposed	46° 20.200' N	115° 27.750' W
Drop Point	11	Proposed	46° 15.500' N	115° 14.800' W
Drop Point	35	Proposed DP staging area and porta potties and road barrier	46° 31.500' N	115° 29.500' W
Water Source		"Trapper Ranch" "meadow" on private land depth and new for possible dip site	46° 34.702' N	115° 14.402' W
Drop Point	5	Drop point 5	46° 20.500' N	115° 27.250' W
Drop Point	9	Drop point 9	46° 35.240' N	115° 29.272' W
Drop Point	14	Drop point 14 on dip site	46° 30.000' N	115° 14.800' W
Drop Point	39	Drop point 39	46° 36.200' N	115° 18.400' W
Drop Point	12	Drop point 12	46° 33.800' N	115° 25.250' W
Drop Point	27	Drop point 27	46° 30.272' N	115° 20.500' W
Drop Point	33	Drop point 33	46° 35.800' N	115° 25.500' W
Drop Point	36	Drop point 36	46° 35.500' N	115° 26.500' W
Drop Point	38	Drop point 38	46° 35.500' N	115° 26.500' W
Drop Point	22	Drop point 22	46° 27.800' N	115° 15.500' W
Drop Point	18	Drop point 18	46° 24.200' N	115° 18.400' W
Helipad	2	Helipad 2	46° 34.822' N	115° 11.152' W
Helipad	19	DP 19 on dip site	46° 35.800' N	115° 14.800' W
Helipad	4	per Terry Barnes	46° 33.444' N	115° 23.444' W
Water Source		Proposed	46° 30.000' N	115° 14.800' W
Drop Point	39	New Drop Point for DR-DQ	46° 22.534' N	115° 17.784' W
Drop Point	38	Drop point 38	46° 30.000' N	115° 14.800' W
Drop Point	23	Would like this updated as a new Drop Point	46° 30.000' N	115° 14.800' W
Water Source		Jackman Lake (at Jack Ranch)	46° 29.972' N	115° 14.800' W
Drop Point	12	Drop point 12	46° 30.000' N	115° 14.800' W
Drop Point	11	Drop point 11	46° 30.000' N	115° 14.800' W
Drop Point	10	Drop point 10	46° 30.000' N	115° 14.800' W
Drop Point	9	Drop point 9	46° 30.000' N	115° 14.800' W
Drop Point	8	Drop point 8	46° 30.000' N	115° 14.800' W
Drop Point	7	Drop point 7	46° 30.000' N	115° 14.800' W
Drop Point	6	Drop point 6	46° 30.000' N	115° 14.800' W
Drop Point	5	Drop point 5	46° 30.000' N	115° 14.800' W
Drop Point	4	Drop point 4	46° 30.000' N	115° 14.800' W
Drop Point	3	Drop point 3	46° 30.000' N	115° 14.800' W
Drop Point	2	Drop point 2	46° 30.000' N	115° 14.800' W
Drop Point	1	Drop point 1	46° 30.000' N	115° 14.800' W
Drop Point	0	Drop point 0	46° 30.000' N	115° 14.800' W
Drop Point	-1	Drop point -1	46° 30.000' N	115° 14.800' W
Drop Point	-2	Drop point -2	46° 30.000' N	115° 14.800' W
Drop Point	-3	Drop point -3	46° 30.000' N	115° 14.800' W
Drop Point	-4	Drop point -4	46° 30.000' N	115° 14.800' W
Drop Point	-5	Drop point -5	46° 30.000' N	115° 14.800' W
Drop Point	-6	Drop point -6	46° 30.000' N	115° 14.800' W
Drop Point	-7	Drop point -7	46° 30.000' N	115° 14.800' W
Drop Point	-8	Drop point -8	46° 30.000' N	115° 14.800' W
Drop Point	-9	Drop point -9	46° 30.000' N	115° 14.800' W
Drop Point	-10	Drop point -10	46° 30.000' N	115° 14.800' W
Drop Point	-11	Drop point -11	46° 30.000' N	115° 14.800' W
Drop Point	-12	Drop point -12	46° 30.000' N	115° 14.800' W
Drop Point	-13	Drop point -13	46° 30.000' N	115° 14.800' W
Drop Point	-14	Drop point -14	46° 30.000' N	115° 14.800' W
Drop Point	-15	Drop point -15	46° 30.000' N	115° 14.800' W
Drop Point	-16	Drop point -16	46° 30.000' N	115° 14.800' W
Drop Point	-17	Drop point -17	46° 30.000' N	115° 14.800' W
Drop Point	-18	Drop point -18	46° 30.000' N	115° 14.800' W
Drop Point	-19	Drop point -19	46° 30.000' N	115° 14.800' W
Drop Point	-20	Drop point -20	46° 30.000' N	115° 14.800' W
Drop Point	-21	Drop point -21	46° 30.000' N	115° 14.800' W
Drop Point	-22	Drop point -22	46° 30.000' N	115° 14.800' W
Drop Point	-23	Drop point -23	46° 30.000' N	115° 14.800' W
Drop Point	-24	Drop point -24	46° 30.000' N	115° 14.800' W
Drop Point	-25	Drop point -25	46° 30.000' N	115° 14.800' W
Drop Point	-26	Drop point -26	46° 30.000' N	115° 14.800' W
Drop Point	-27	Drop point -27	46° 30.000' N	115° 14.800' W
Drop Point	-28	Drop point -28	46° 30.000' N	115° 14.800' W
Drop Point	-29	Drop point -29	46° 30.000' N	115° 14.800' W
Drop Point	-30	Drop point -30	46° 30.000' N	115° 14.800' W
Drop Point	-31	Drop point -31	46° 30.000' N	115° 14.800' W
Drop Point	-32	Drop point -32	46° 30.000' N	115° 14.800' W
Drop Point	-33	Drop point -33	46° 30.000' N	115° 14.800' W
Drop Point	-34	Drop point -34	46° 30.000' N	115° 14.800' W
Drop Point	-35	Drop point -35	46° 30.000' N	115° 14.800' W
Drop Point	-36	Drop point -36	46° 30.000' N	115° 14.800' W
Drop Point	-37	Drop point -37	46° 30.000' N	115° 14.800' W
Drop Point	-38	Drop point -38	46° 30.000' N	115° 14.800' W
Drop Point	-39	Drop point -39	46° 30.000' N	115° 14.800' W
Drop Point	-40	Drop point -40	46° 30.000' N	115° 14.800' W
Drop Point	-41	Drop point -41	46° 30.000' N	115° 14.800' W
Drop Point	-42	Drop point -42	46° 30.000' N	115° 14.800' W
Drop Point	-43	Drop point -43	46° 30.000' N	115° 14.800' W
Drop Point	-44	Drop point -44	46° 30.000' N	115° 14.800' W
Drop Point	-45	Drop point -45	46° 30.000' N	115° 14.800' W
Drop Point	-46	Drop point -46	46° 30.000' N	115° 14.800' W
Drop Point	-47	Drop point -47	46° 30.000' N	115° 14.800' W
Drop Point	-48	Drop point -48	46° 30.000' N	115° 14.800' W
Drop Point	-49	Drop point -49	46° 30.000' N	115° 14.800' W
Drop Point	-50	Drop point -50	46° 30.000' N	115° 14.800' W
Drop Point	-51	Drop point -51	46° 30.000' N	115° 14.800' W
Drop Point	-52	Drop point -52	46° 30.000' N	115° 14.800' W
Drop Point	-53	Drop point -53	46° 30.000' N	115° 14.800' W
Drop Point	-54	Drop point -54	46° 30.000' N	115° 14.800' W
Drop Point	-55	Drop point -55	46° 30.000' N	115° 14.800' W
Drop Point	-56	Drop point -56	46° 30.000' N	115° 14.800' W
Drop Point	-57	Drop point -57	46° 30.000' N	115° 14.800' W
Drop Point	-58	Drop point -58	46° 30.000' N	115° 14.800' W
Drop Point	-59	Drop point -59	46° 30.000' N	115° 14.800' W
Drop Point	-60	Drop point -60	46° 30.000' N	115° 14.800' W
Drop Point	-61	Drop point -61	46° 30.000' N	115° 14.800' W
Drop Point	-62	Drop point -62	46° 30.000' N	115° 14.800' W
Drop Point	-63	Drop point -63	46° 30.000' N	115° 14.800' W
Drop Point	-64	Drop point -64	46° 30.000' N	115° 14.800' W
Drop Point	-65	Drop point -65	46° 30.000' N	115° 14.800' W
Drop Point	-66	Drop point -66	46° 30.000' N	115° 14.800' W
Drop Point	-67	Drop point -67	46° 30.000' N	115° 14.800' W
Drop Point	-68	Drop point -68	46° 30.000' N	115° 14.800' W
Drop Point	-69	Drop point -69	46° 30.000' N	115° 14.800' W
Drop Point	-70	Drop point -70	46° 30.000' N	115° 14.800' W
Drop Point	-71	Drop point -71	46° 30.000' N	115° 14.800' W
Drop Point	-72	Drop point -72	46° 30.000' N	115° 14.800' W
Drop Point	-73	Drop point -73	46° 30.000' N	115° 14.800' W
Drop Point	-74	Drop point -74	46° 30.000' N	115° 14.800' W
Drop Point	-75	Drop point -75	46° 30.000' N	115° 14.800' W
Drop Point	-76	Drop point -76	46° 30.000' N	115° 14.800' W
Drop Point	-77	Drop point -77	46° 30.000' N	115° 14.800' W
Drop Point	-78	Drop point -78	46° 30.000' N	115° 14.800' W
Drop Point	-79	Drop point -79	46° 30.000' N	115° 14.800' W
Drop Point	-80	Drop point -80	46° 30.000' N	115° 14.800' W
Drop Point	-81	Drop point -81	46° 30.000' N	115° 14.800' W
Drop Point	-82	Drop point -82	46° 30.000' N	115° 14.800' W
Drop Point	-83	Drop point -83	46° 30.	