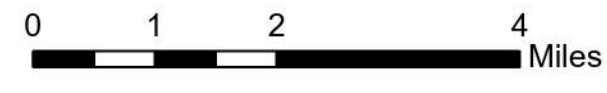


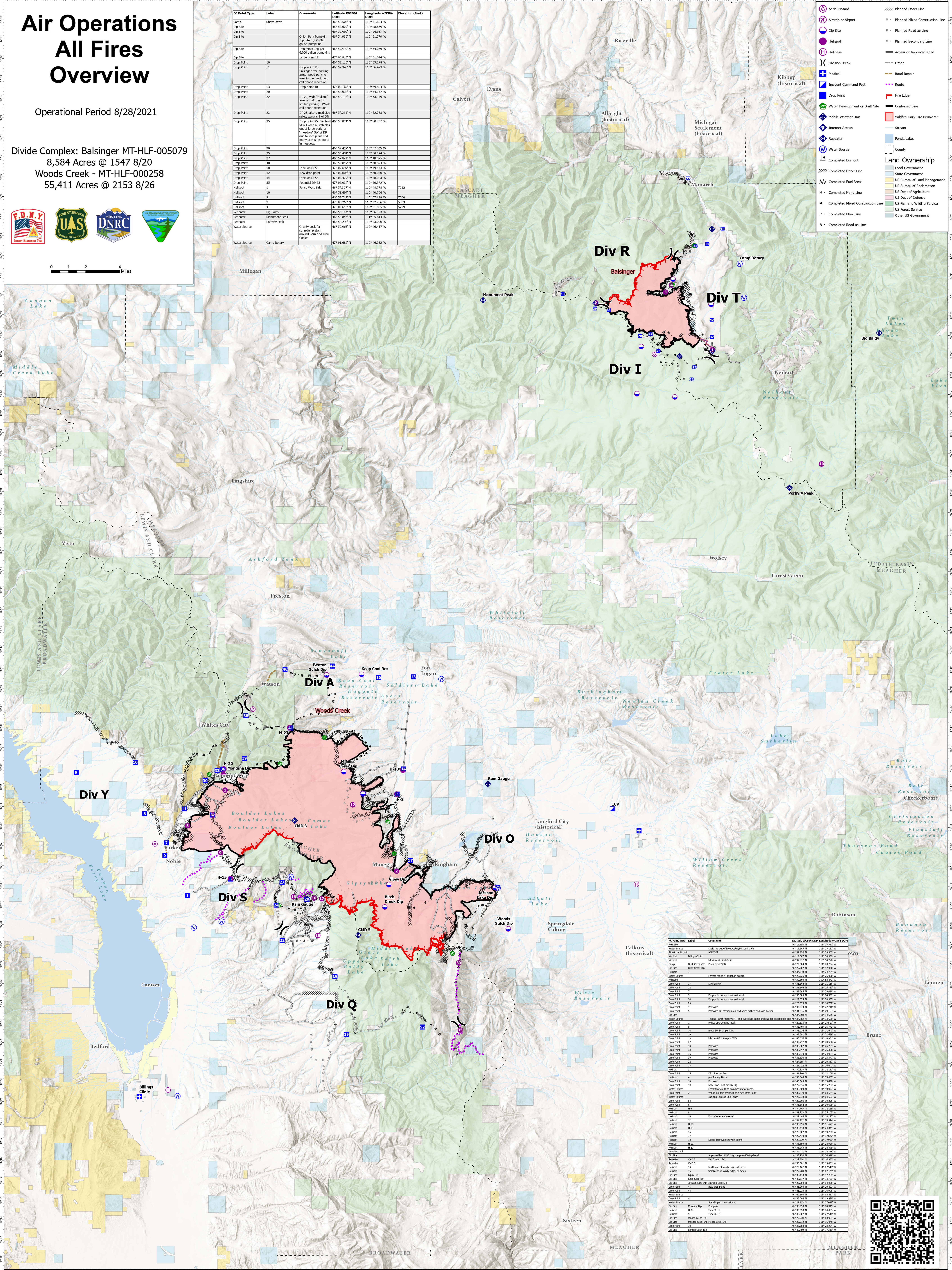
Air Operations All Fires Overview

Operational Period 8/28/2021

Divide Complex: Balsinger MT-HLF-005079
8,584 Acres @ 1547 8/20
Woods Creek - MT-HLF-00258
55,411 Acres @ 2153 8/26



| FC Point Type | Label | Comments | Latitude WGS84 (N) | Longitude WGS84 (W) | Elevation (Feet) |
|---------------|------------------|---|--------------------|---------------------|------------------|
| Camp | Show Down | | 46° 50.500' N | 110° 41.824' W | 7012 |
| Dip Site | | | 46° 50.627' N | 110° 48.869' W | |
| Dip Site | | | 46° 50.995' N | 110° 54.387' W | |
| Dip Site | | Orion Park Pumping Dip Site (226,000 gallon capacity) | 46° 54.600' N | 110° 51.370' W | |
| Dip Site | | Iron Mine Dip (2) 6,000 gallon capacity | 46° 57.490' N | 110° 54.059' W | |
| Dip Site | | Large dumpsite | 47° 00.937' N | 110° 51.694' W | |
| Dip Point | 10 | | 46° 58.110' N | 110° 53.378' W | |
| Dip Point | 11 | Drop point 11, Balsinger trail parking area. Good parking area in the back, with cell phone reception. | 46° 59.340' N | 110° 56.473' W | |
| Dip Point | 13 | Drop point 13 | 47° 00.167' N | 110° 59.894' W | |
| Dip Point | 20 | | 46° 58.038' N | 110° 54.157' W | |
| Dip Point | 22 | DP 22, wide "pullout" area at trail turn, limited parking. Weak cell phone reception. | 46° 58.110' N | 110° 53.378' W | |
| Dip Point | 23 | DP 23, also a med size pullout area, good cell phone reception. | 46° 57.261' N | 110° 52.788' W | |
| Dip Point | 25 | Drop point 25, per lead H-15, also a med size pullout area, good cell phone reception. "Pavement" SW of DP due to new steel and many arches also found in location. | 46° 59.821' N | 110° 50.337' W | |
| Dip Point | 30 | | 46° 59.427' N | 110° 57.959' W | |
| Dip Point | 35 | | 46° 58.431' N | 110° 53.218' W | |
| Dip Point | 37 | | 46° 59.971' N | 110° 48.825' W | |
| Dip Point | 40 | | 46° 58.887' N | 110° 48.824' W | |
| Dip Point | 50 | Label as DP50 | 47° 02.097' N | 110° 46.143' W | |
| Dip Point | 52 | New drop point | 47° 02.660' N | 110° 50.020' W | |
| Dip Point | 54 | Label as DP54 | 47° 03.477' N | 110° 48.003' W | |
| Dip Point | 55 | Historical DP 55 | 47° 05.037' N | 110° 36.572' W | |
| Helipoint | 1 | Force West Side | 46° 57.807' N | 110° 48.778' W | 7012 |
| Helipoint | 10 | | 46° 51.497' N | 110° 49.704' W | |
| Helipoint | 2 | | 46° 59.212' N | 110° 57.130' W | 7500 |
| Helipoint | 3 | | 47° 00.299' N | 110° 52.256' W | 5863 |
| Helipoint | 4 | | 47° 00.612' N | 110° 51.805' W | 5779 |
| Separator | Big Baldy | | 46° 58.144' N | 110° 36.393' W | |
| Separator | Measurement Peak | | 46° 59.842' N | 110° 48.814' W | |
| Separator | Porhyry Peak | | 46° 59.292' N | 110° 43.000' W | |
| Water Source | | Gravity sock for water system around Barn and Tree Collier | 46° 59.962' N | 110° 46.417' W | |
| Water Source | Camp Rotary | | 47° 01.680' N | 110° 46.722' W | |



| FC Point Type | Label | Comments | Latitude WGS84 (N) | Longitude WGS84 (W) | Elevation (Feet) |
|---------------|-----------------|---|--------------------|---------------------|------------------|
| Water Source | | Draft site out of Broadwater Reservoir ditch | 46° 15.242' N | 110° 28.152' W | |
| Medical | Adopted | | 46° 22.252' N | 110° 25.252' W | |
| Medical | Hillside Clinic | | 46° 18.307' N | 110° 30.509' W | |
| Medical | | 18. West Medical Clinic | 46° 32.877' N | 110° 54.299' W | |
| Camp | Duck Creek VFD | Duck Creek VFD | 46° 29.862' N | 110° 28.262' W | |
| Dip Site | Beech Creek Dip | | 46° 29.862' N | 110° 28.262' W | |
| Helipoint | | Haynes search #1 integration access | 46° 38.282' N | 110° 28.807' W | |
| Water Source | | | 46° 38.282' N | 110° 28.807' W | |
| Dip Point | 17 | Drop Point | 46° 31.244' N | 110° 11.135' W | |
| Dip Point | 18 | Drop point for approval and label | 46° 32.265' N | 110° 29.988' W | |
| Dip Point | 7 | Drop point for approval and label | 46° 32.265' N | 110° 29.988' W | |
| Dip Point | 24 | Drop point for approval and label | 46° 29.975' N | 110° 26.985' W | |
| Dip Point | 20 | Proposed | 46° 29.239' N | 110° 28.720' W | |
| Dip Point | 11 | Proposed | 46° 31.526' N | 110° 29.294' W | |
| Dip Point | 5 | Proposed DP staging area and porta potties and road barrier | 46° 34.742' N | 110° 14.827' W | |
| Water Source | | "Trapper Ranch" Reservoir" on plateau has depth and now the possible dip site | 46° 34.742' N | 110° 14.827' W | |
| Dip Point | 1 | Force West Side | 46° 30.292' N | 110° 27.211' W | |
| Dip Point | 9 | Force West Side | 46° 30.292' N | 110° 27.211' W | |
| Dip Point | 14 | Force West Side | 46° 30.292' N | 110° 27.211' W | |
| Dip Point | 39 | Force West Side | 46° 30.292' N | 110° 27.211' W | |
| Dip Point | 12 | Force West Side | 46° 30.292' N | 110° 27.211' W | |
| Dip Point | 27 | Force West Side | 46° 30.292' N | 110° 27.211' W | |
| Dip Point | 33 | Force West Side | 46° 30.292' N | 110° 27.211' W | |
| Dip Point | 36 | Force West Side | 46° 30.292' N | 110° 27.211' W | |
| Dip Point | 38 | Force West Side | 46° 30.292' N | 110° 27.211' W | |
| Dip Point | 22 | Force West Side | 46° 30.292' N | 110° 27.211' W | |
| Dip Point | 18 | Force West Side | 46° 30.292' N | 110° 27.211' W | |
| Helipoint | 2 | Force West Side | 46° 30.292' N | 110° 27.211' W | |
| Helipoint | 4 | Force West Side | 46° 30.292' N | 110° 27.211' W | |
| Helipoint | 19 | Force West Side | 46° 30.292' N | 110° 27.211' W | |
| Water Source | | New Drop Point for DP-00 | 46° 22.516' N | 110° 15.794' W | |
| Dip Point | 35 | Force West Side | 46° 22.516' N | 110° 15.794' W | |
| Dip Point | 23 | Force West Side | 46° 22.516' N | 110° 15.794' W | |
| Water Source | | Jackman Lake on Draft Point | 46° 30.019' N | 110° 14.624' W | |
| Dip Point | 12 | Force West Side | 46° 29.975' N | 110° 14.624' W | |
| Dip Point | 11 | Force West Side | 46° 29.975' N | 110° 14.624' W | |
| Dip Point | 36 | Force West Side | 46° 30.292' N | 110° 27.211' W | |
| Dip Point | 38 | Force West Side | 46° 30.292' N | 110° 27.211' W | |
| Dip Point | 39 | Force West Side | 46° 30.292' N | 110° 27.211' W | |
| Dip Point | 37 | Force West Side | 46° 30.292' N | 110° 27.211' W | |
| Dip Point | 34 | Force West Side | 46° 30.292' N | 110° 27.211' W | |
| Dip Point | 32 | Force West Side | 46° 30.292' N | 110° 27.211' W | |
| Dip Point | 31 | Force West Side | 46° 30.292' N | 110° 27.211' W | |
| Dip Point | 30 | Force West Side | 46° 30.292' N | 110° 27.211' W | |
| Dip Point | 29 | Force West Side | 46° 30.292' N | 110° 27.211' W | |
| Dip Point | 28 | Force West Side | 46° 30.292' N | 110° 27.211' W | |
| Dip Point | 26 | Force West Side | 46° 30.292' N | 110° 27.211' W | |
| Dip Point | 25 | Force West Side | 46° 30.292' N | 110° 27.211' W | |
| Dip Point | 24 | Force West Side | 46° 30.292' N | 110° 27.211' W | |
| Dip Point | 21 | Force West Side | 46° 30.292' N | 110° 27.211' W | |
| Dip Point | 20 | Force West Side | 46° 30.292' N | 110° 27.211' W | |
| Dip Point | 19 | Force West Side | 46° 30.292' N | 110° 27.211' W | |
| Dip Point | 18 | Force West Side | 46° 30.292' N | 110° 27.211' W | |
| Dip Point | 17 | Force West Side | 46° 30.292' N | 110° 27.211' W | |
| Dip Point | 16 | Force West Side | 46° 30.292' N | 110° 27.211' W | |
| Dip Point | 15 | Force West Side | 46° 30.292' N | 110° 27.211' W | |
| Dip Point | 14 | Force West Side | 46° 30.292' N | 110° 27.211' W | |
| Dip Point | 13 | Force West Side | 46° 30.292' N | 110° 27.211' W | |
| Dip Point | 12 | Force West Side | 46° 30.292' N | 110° 27.211' W | |
| Dip Point | 11 | Force West Side | 46° 30.292' N | 110° 27.211' W | |
| Dip Point | 10 | Force West Side | 46° 30.292' N | 110° 27.211' W | |
| Dip Point | 9 | Force West Side | 46° 30.292' N | 110° 27.211' W | |
| Dip Point | 8 | Force West Side | 46° 30.292' N | 110° 27.211' W | |
| Dip Point | 7 | Force West Side | 46° 30.292' N | 110° 27.211' W | |
| Dip Point | 6 | Force West Side | 46° 30.292' N | 110° 27.211' W | |
| Dip Point | 5 | Force West Side | 46° 30.292' N | 110° 27.211' W | |
| Dip Point | 4 | Force West Side | 46° 30.292' N | 110° 27.211' W | |
| Dip Point | 3 | Force West Side | 46° 30.292' N | 110° 27.211' W | |
| Dip Point | 2 | Force West Side | 46° 30.292' N | 110° 27.211' W | |
| Dip Point | 1 | Force West Side | 46° 30.292' N | 110° 27.211' W | |
| Dip Point | 0 | Force West Side | 46° 30.292' N | 110° 27.211' W | |

