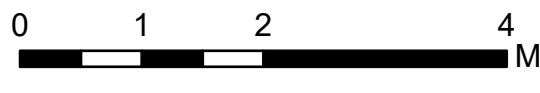


Air Operations All Fires Overview

Operational Period 8/28/2021

Divide Complex: Balsinger MT-HLF-005079
8,584 Acres @ 1547 8/20
Woods Creek - MT-HLF-000258
55,411 Acres @ 2153 8/26



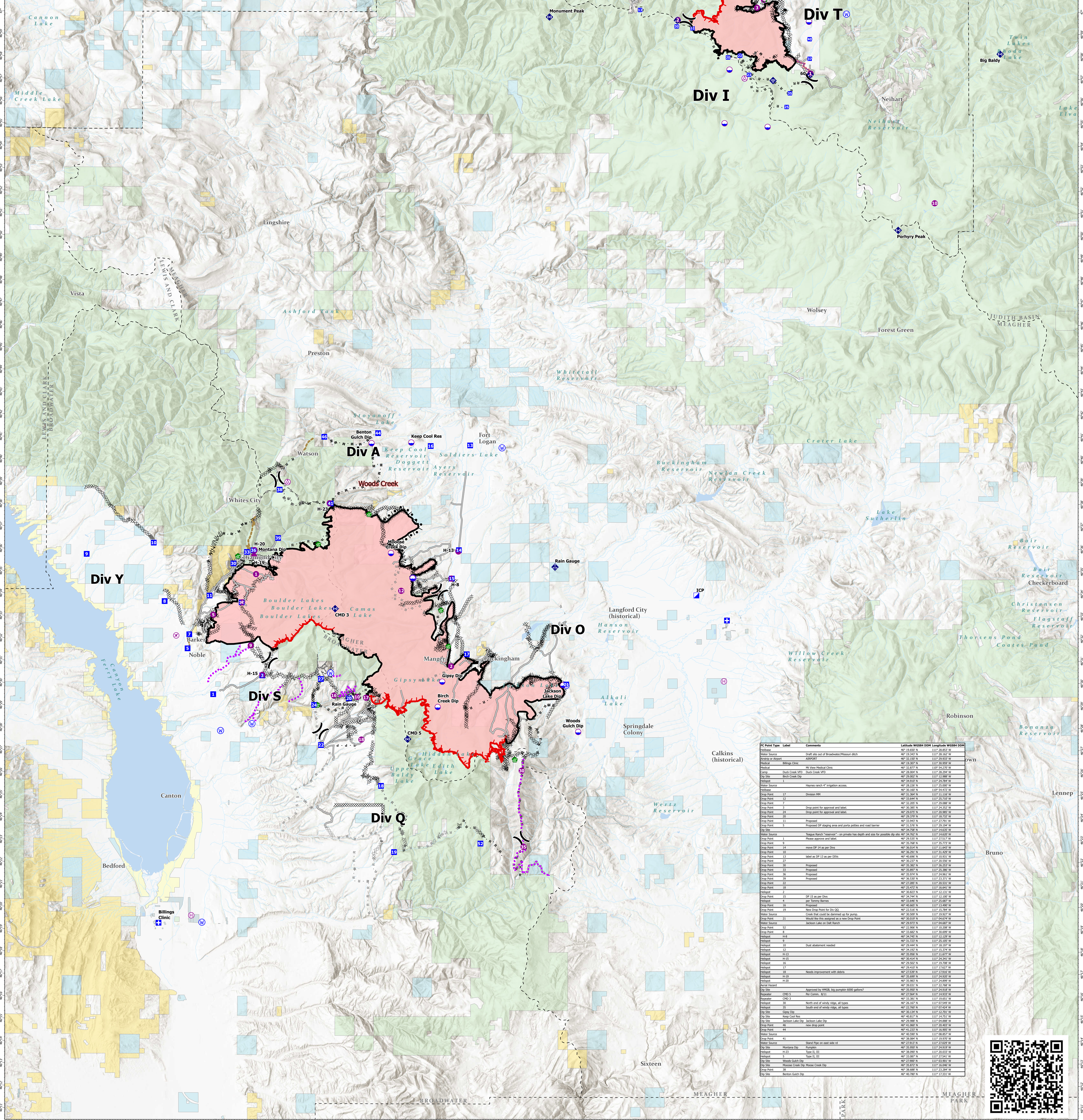
FC Point Type	Label	Comments	Latitude WGS84 DOM	Longitude WGS84 DOM	Elevation (Feet)
Camp	Show Down		46° 50.500' N	110° 41.824' W	487
Dip Site			46° 50.627' N	110° 48.869' W	487
Dip Site		Dillon Park Pumping Dip Site - (26,000 gallon pump)	46° 53.995' N	110° 54.367' W	487
Dip Site		Iron Mines Dip (2) 6,000 gallon pumps	46° 57.490' N	110° 54.059' W	487
Dip Site		Dip Site	47° 00.932' N	110° 55.694' W	487
Drop Point	10		46° 58.110' N	110° 53.378' W	487
Drop Point	11	Drop point 11, Balsinger trail parking area. Good parking area in the back, with cell phone reception.	46° 59.340' N	110° 54.473' W	487
Drop Point	13		47° 00.162' N	110° 59.894' W	487
Drop Point	20		46° 58.038' N	110° 54.157' W	487
Drop Point	22	DP 22, wide "pullout" area at trail on bars, limited parking. Weak cell phone reception.	46° 57.261' N	110° 52.788' W	487
Drop Point	23		46° 57.261' N	110° 52.788' W	487
Drop Point	25	Drop point 25, per lead 1000' level of vehicles out of large park, or "Fusion" SW of CP. Blue for new steel and many arch sites found in meadow.	46° 55.821' N	110° 50.337' W	487
Drop Point	30		46° 59.427' N	110° 57.925' W	487
Drop Point	35		46° 58.431' N	110° 53.238' W	487
Drop Point	37		46° 57.971' N	110° 48.825' W	487
Drop Point	40		46° 58.847' N	110° 48.824' W	487
Drop Point	50	Label as DP50	47° 02.097' N	110° 56.143' W	487
Drop Point	52	New drop point	47° 02.660' N	110° 55.020' W	487
Drop Point	54	Label as DP54	47° 03.477' N	110° 48.003' W	487
Drop Point	55	Potential DP 55	47° 05.037' N	110° 56.572' W	487
Helipoint	1	Forest West Side	46° 57.927' N	110° 48.778' W	7012
Helipoint	10		46° 51.497' N	110° 49.704' W	487
Helipoint	2		46° 59.112' N	110° 57.436' W	7500
Helipoint	3		47° 00.250' N	110° 52.250' W	5863
Helipoint	4		47° 00.615' N	110° 51.805' W	5779
Repeater	Big Baldy		46° 58.144' N	110° 36.393' W	487
Repeater	Monument Peak		46° 59.840' N	110° 45.814' W	487
Repeater	Porphyry Peak		46° 50.293' N	110° 43.000' W	487
Water Source		Gravelly sock for portable system around Barn and Tree Color	46° 59.963' N	110° 46.417' W	487
Water Source	Camp Rotary		47° 01.680' N	110° 46.722' W	487

- Aerial Hazard
- Airstrip or Airport
- Dip Site
- Helipoint
- Helibase
- Division Break
- Medical
- Incident Command Post
- Drop Point
- Water Development or Draft Site
- Mobile Weather Unit
- Internet Access
- Repeater
- Water Source
- Completed Burnout
- Completed Dozer Line
- Completed Fuel Break
- Completed Hand Line
- Completed Mixed Construction Line
- Completed Plow Line
- Completed Road as Line

- Planned Dozer Line
- Planned Mixed Construction Line
- Planned Road as Line
- Planned Secondary Line
- Access or Improved Road
- Other
- Road Repair
- Fire Edge
- Contained Line
- Wildfire Daily Fire Perimeter
- Stream
- Ponds/Lakes
- County

Land Ownership

- Local Government
- State Government
- US Bureau of Land Management
- US Bureau of Reclamation
- US Dept of Agriculture
- US Dept of Defense
- US Fish and Wildlife Service
- US Forest Service
- Other US Government



FC Point Type	Label	Comments	Latitude WGS84 DOM	Longitude WGS84 DOM	Elevation (Feet)
Water Source		Draft site out of Broadwater Pressure ditch	46° 19.243' N	110° 28.162' W	487
Water Source		ADPNET	46° 22.028' N	110° 25.238' W	487
Water Source		Hillside Creek	46° 18.102' N	110° 30.509' W	487
Medical		18. Vets Medical Center	46° 32.877' N	110° 54.270' W	487
Dip Site		Duck Creek VFD	46° 29.888' N	110° 29.258' W	487
Dip Site		Bark Creek Dip	46° 29.882' N	110° 13.988' W	487
Water Source		Haynes ranch #1 Engstrom access	46° 28.282' N	110° 25.087' W	487
Drop Point	1		46° 31.284' N	110° 11.185' W	487
Drop Point	2		46° 32.285' N	110° 25.088' W	487
Drop Point	3	Drop point for approval and label	46° 33.286' N	110° 18.792' W	487
Drop Point	4	Drop point for approval and label	46° 34.287' N	110° 29.294' W	487
Drop Point	5	Proposed	46° 35.288' N	110° 14.827' W	487
Drop Point	6	Proposed DP staging area and porta potties and road barrier	46° 36.289' N	110° 25.295' W	487
Drop Point	7		46° 37.290' N	110° 29.296' W	487
Drop Point	8		46° 38.291' N	110° 14.828' W	487
Drop Point	9		46° 39.292' N	110° 29.297' W	487
Drop Point	10		46° 40.293' N	110° 14.829' W	487
Drop Point	11		46° 41.294' N	110° 29.298' W	487
Drop Point	12		46° 42.295' N	110° 14.830' W	487
Drop Point	13		46° 43.296' N	110° 29.299' W	487
Drop Point	14		46° 44.297' N	110° 14.831' W	487
Drop Point	15		46° 45.298' N	110° 29.300' W	487
Drop Point	16		46° 46.299' N	110° 14.832' W	487
Drop Point	17		46° 47.300' N	110° 29.301' W	487
Drop Point	18		46° 48.301' N	110° 14.833' W	487
Drop Point	19		46° 49.302' N	110° 29.302' W	487
Drop Point	20		46° 50.303' N	110° 14.834' W	487
Drop Point	21		46° 51.304' N	110° 29.303' W	487
Drop Point	22		46° 52.305' N	110° 14.835' W	487
Drop Point	23		46° 53.306' N	110° 29.304' W	487
Drop Point	24		46° 54.307' N	110° 14.836' W	487
Drop Point	25		46° 55.308' N	110° 29.305' W	487
Drop Point	26		46° 56.309' N	110° 14.837' W	487
Drop Point	27		46° 57.310' N	110° 29.306' W	487
Drop Point	28		46° 58.311' N	110° 14.838' W	487
Drop Point	29		46° 59.312' N	110° 29.307' W	487
Drop Point	30		46° 60.313' N	110° 14.839' W	487
Drop Point	31		46° 61.314' N	110° 29.308' W	487
Drop Point	32		46° 62.315' N	110° 14.840' W	487
Drop Point	33		46° 63.316' N	110° 29.309' W	487
Drop Point	34		46° 64.317' N	110° 14.841' W	487
Drop Point	35		46° 65.318' N	110° 29.310' W	487
Drop Point	36		46° 66.319' N	110° 14.842' W	487
Drop Point	37		46° 67.320' N	110° 29.311' W	487
Drop Point	38		46° 68.321' N	110° 14.843' W	487
Drop Point	39		46° 69.322' N	110° 29.312' W	487
Drop Point	40		46° 70.323' N	110° 14.844' W	487
Drop Point	41		46° 71.324' N	110° 29.313' W	487
Drop Point	42		46° 72.325' N	110° 14.845' W	487
Drop Point	43		46° 73.326' N	110° 29.314' W	487
Drop Point	44		46° 74.327' N	110° 14.846' W	487
Drop Point	45		46° 75.328' N	110° 29.315' W	487
Drop Point	46		46° 76.329' N	110° 14.847' W	487
Drop Point	47		46° 77.330' N	110° 29.316' W	487
Drop Point	48		46° 78.331' N	110° 14.848' W	487
Drop Point	49		46° 79.332' N	110° 29.317' W	487
Drop Point	50		46° 80.333' N	110° 14.849' W	487
Drop Point	51		46° 81.334' N	110° 29.318' W	487
Drop Point	52		46° 82.335' N	110° 14.850' W	487
Drop Point	53		46° 83.336' N	110° 29.319' W	487
Drop Point	54		46° 84.337' N	110° 14.851' W	487
Drop Point	55		46° 85.338' N	110° 29.320' W	487
Drop Point	56		46° 86.339' N	110° 14.852' W	487
Drop Point	57		46° 87.340' N	110° 29.321' W	487
Drop Point	58		46° 88.341' N	110° 14.853' W	487
Drop Point	59		46° 89.342' N	110° 29.322' W	487
Drop Point	60		46° 90.343' N	110° 14.854' W	487
Drop Point	61		46° 91.344' N	110° 29.323' W	487
Drop Point	62		46° 92.345' N	110° 14.855' W	487
Drop Point	63		46° 93.346' N	110° 29.324' W	487
Drop Point	64		46° 94.347' N	110° 14.856' W	487
Drop Point	65		46° 95.348' N	110° 29.325' W	487
Drop Point	66		46° 96.349' N	110° 14.857' W	487
Drop Point	67		46° 97.350' N	110° 29.326' W	487
Drop Point	68		46° 98.351' N	110° 14.858' W	487
Drop Point	69		46° 99.352' N	110° 29.327' W	487
Drop Point	70		46° 100.353' N	110° 14.859' W	487

