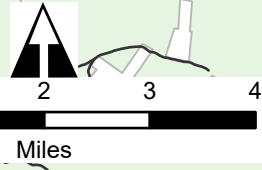
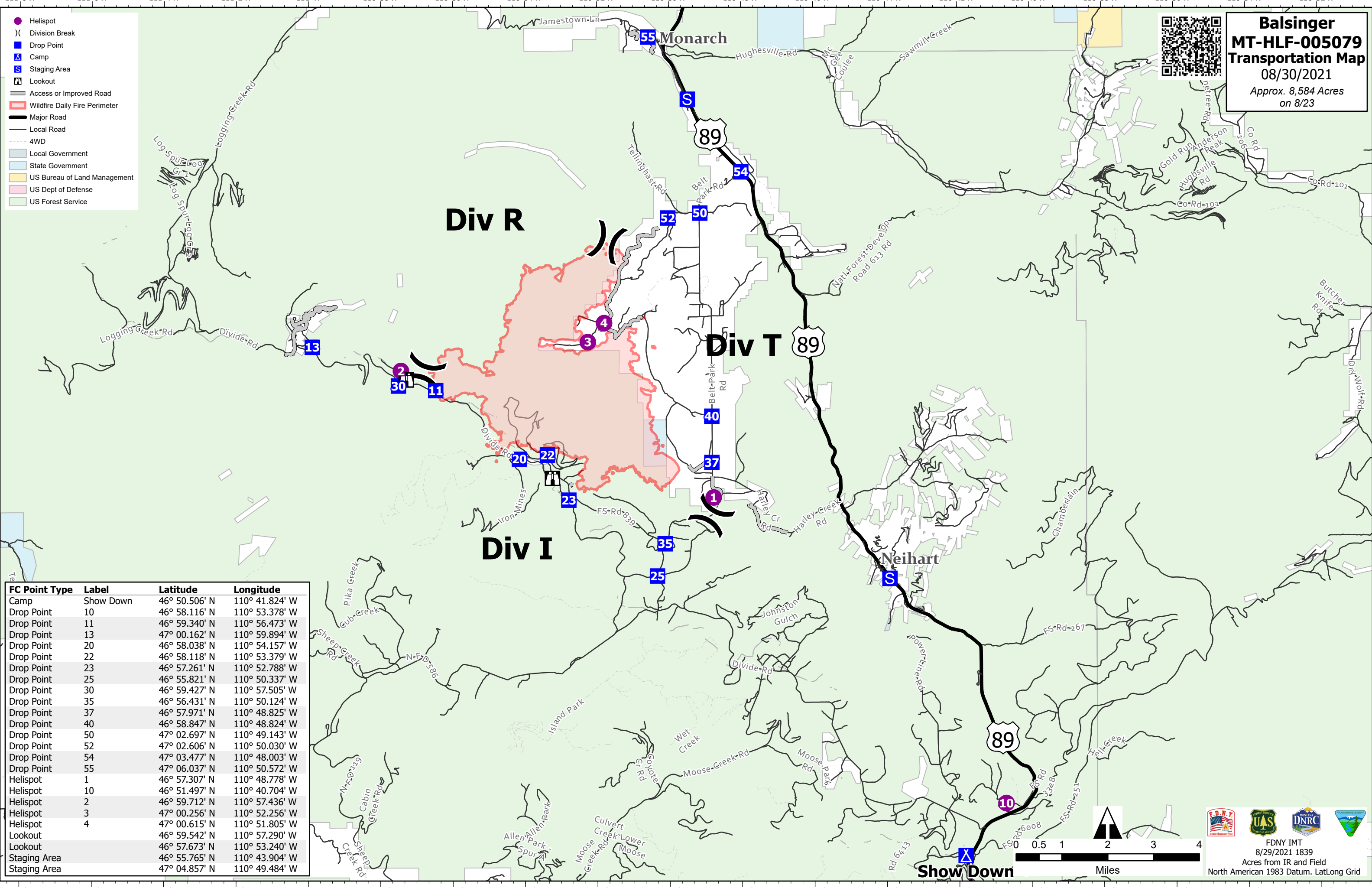


**Balsinger
MT-HLF-005079
Transportation Map**
08/30/2021
Approx. 8,584 Acres
on 8/23



- Helispot
-) Division Break
- Drop Point
- ⓧ Camp
- Staging Area
- Ⓜ Lookout
- Access or Improved Road
- ▭ Wildfire Daily Fire Perimeter
- Major Road
- Local Road
- 4WD
- Local Government
- State Government
- US Bureau of Land Management
- US Dept of Defense
- US Forest Service

FC Point Type	Label	Latitude	Longitude
Camp	Show Down	46° 50.506' N	110° 41.824' W
Drop Point	10	46° 58.116' N	110° 53.378' W
Drop Point	11	46° 59.340' N	110° 56.473' W
Drop Point	13	47° 00.162' N	110° 59.894' W
Drop Point	20	46° 58.038' N	110° 54.157' W
Drop Point	22	46° 58.118' N	110° 53.379' W
Drop Point	23	46° 57.261' N	110° 52.788' W
Drop Point	25	46° 55.821' N	110° 50.337' W
Drop Point	30	46° 59.427' N	110° 57.505' W
Drop Point	35	46° 56.431' N	110° 50.124' W
Drop Point	37	46° 57.971' N	110° 48.825' W
Drop Point	40	46° 58.847' N	110° 48.824' W
Drop Point	50	47° 02.697' N	110° 49.143' W
Drop Point	52	47° 02.606' N	110° 50.030' W
Drop Point	54	47° 03.477' N	110° 48.003' W
Drop Point	55	47° 06.037' N	110° 50.572' W
Helispot	1	46° 57.307' N	110° 48.778' W
Helispot	10	46° 51.497' N	110° 40.704' W
Helispot	2	46° 59.712' N	110° 57.436' W
Helispot	3	47° 00.256' N	110° 52.256' W
Helispot	4	47° 00.615' N	110° 51.805' W
Lookout		46° 59.542' N	110° 57.290' W
Lookout		46° 57.673' N	110° 53.240' W
Staging Area		46° 55.765' N	110° 43.904' W
Staging Area		47° 04.857' N	110° 49.484' W








FDNY IMT
 8/29/2021 1839
 Acres from IR and Field
 North American 1983 Datum. LatLong Grid