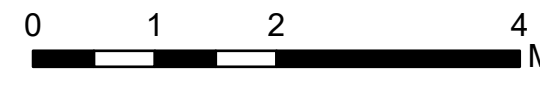


# Air Operations All Fires Overview

Operational Period 8/31/2021

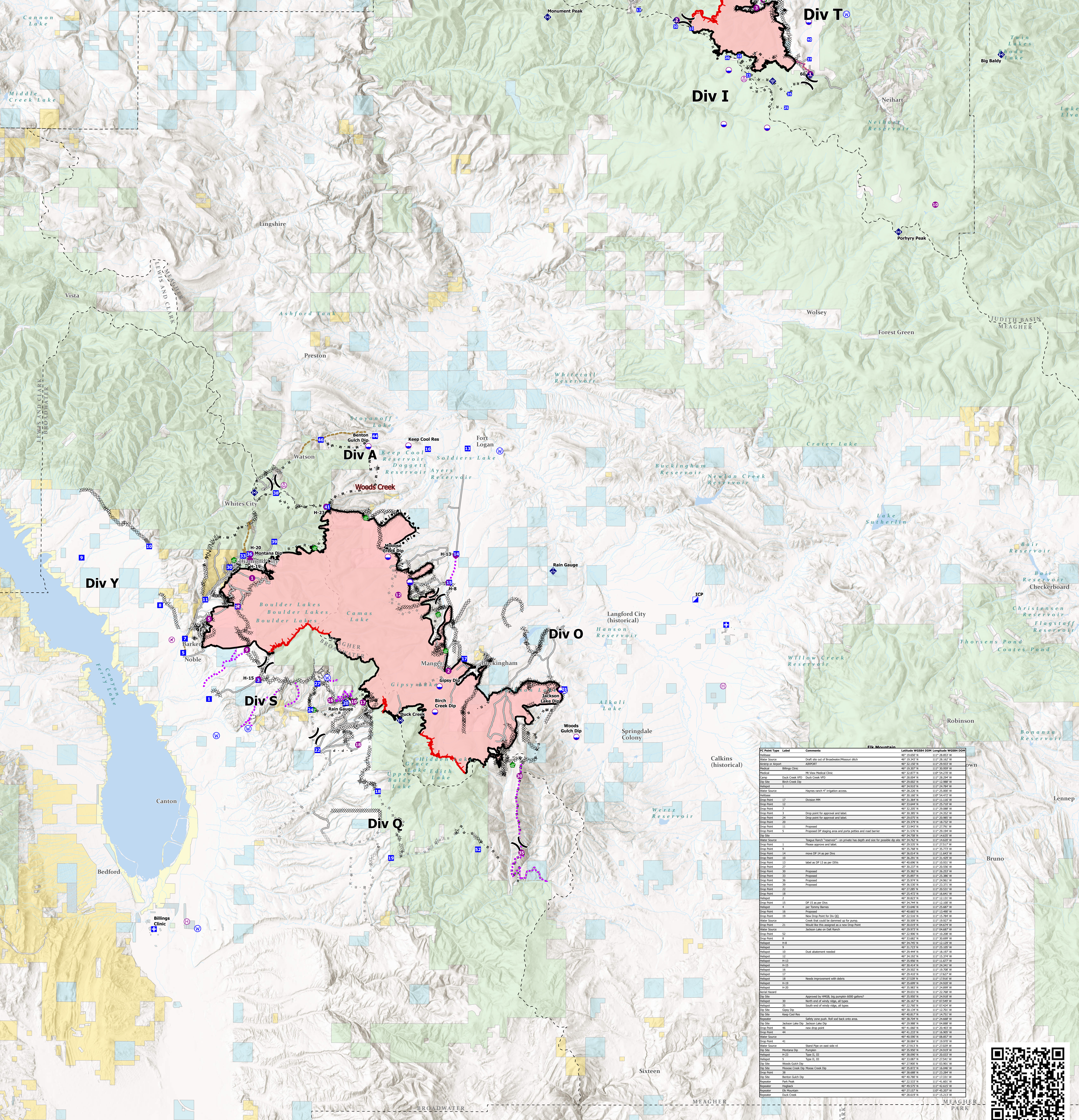
Divide Complex: Balsinger MT-HLF-005079  
8,584 Acres @ 1547 8/20  
Woods Creek - MT-HLF-000258  
55,411 Acres @ 2100 8/29



FC Point Type	Label	Comments	Latitude WGS84 DDM	Longitude WGS84 DDM	Elevation (Feet)
Camp	Show Down		46° 50.500' N	110° 41.824' W	
Dip Site			46° 50.627' N	110° 48.869' W	
Dip Site			46° 50.995' N	110° 54.387' W	
Dip Site		Dillon Park Pumping Dip Site - (26,000 gallon pump)	46° 54.930' N	110° 51.379' W	
Dip Site		Iron Mines Dip (2)	46° 57.490' N	110° 54.059' W	
Dip Site		6300 gallon pumps	47° 00.932' N	110° 51.694' W	
Dip Point	10		46° 58.110' N	110° 53.378' W	
Dip Point	11	Drop point 11, Balsinger trail parking area. Good parking area in the back, with cell phone reception.	46° 59.340' N	110° 54.473' W	
Dip Point	13	Drop point 13	47° 00.162' N	110° 50.894' W	
Dip Point	20		46° 58.038' N	110° 54.157' W	
Dip Point	22	DP 22, wide "pullout" area at trail on bars, limited parking. Weak cell phone reception.	46° 57.261' N	110° 52.788' W	
Dip Point	23	DP 23, also a med size pullout area, good cell phone reception.	46° 57.261' N	110° 52.788' W	
Dip Point	25	Drop point 25, per lead 10300 trees of which 1000 are out of large park, or 10000 SW of Firehouse SW of Firehouse.	46° 55.821' N	110° 50.337' W	
Dip Point	30		46° 59.427' N	110° 57.925' W	
Dip Point	35		46° 58.431' N	110° 50.228' W	
Dip Point	37		46° 57.971' N	110° 48.825' W	
Dip Point	40		46° 58.847' N	110° 48.824' W	
Dip Point	50	Label as DP50	47° 02.097' N	110° 48.143' W	
Dip Point	52	New drop point	47° 02.090' N	110° 50.020' W	
Dip Point	54	Label as DP54	47° 03.477' N	110° 48.003' W	
Dip Point	55	Potential DP 55	47° 05.037' N	110° 50.572' W	
Helipoint	1	Forest West Side	46° 57.807' N	110° 48.778' W	7012
Helipoint	10		46° 51.497' N	110° 48.704' W	
Helipoint	2		46° 59.112' N	110° 57.430' W	7500
Helipoint	3		47° 00.250' N	110° 52.250' W	5863
Helipoint	4		47° 00.615' N	110° 51.805' W	5779
Repeater	Big Baldy		46° 58.144' N	110° 36.393' W	
Repeater	Monument Peak		46° 59.840' N	111° 05.814' W	
Repeater	Porphyry Peak		46° 50.293' N	110° 43.000' W	
Water Source		Gravelly sock for gravel system around Barn and Tree Color	46° 59.963' N	110° 46.417' W	
Water Source	Camp Rotary		47° 01.680' N	110° 46.722' W	

**Land Ownership**

- Local Government
- State Government
- US Bureau of Land Management
- US Bureau of Reclamation
- US Dept of Agriculture
- US Dept of Defense
- US Fish and Wildlife Service
- US Forest Service
- Other US Government



FC Point Type	Label	Comments	Latitude WGS84 DDM	Longitude WGS84 DDM	Elevation (Feet)
Water Source		Drift site out of Broadwater Reservoir ditch	46° 13.243' N	110° 28.162' W	
Water Source		ADPNET	46° 22.228' N	110° 29.228' W	
Medical	Billing Clinic		46° 18.102' N	110° 30.500' W	
Medical	Duck Creek VED	18. Vets Medical Center	46° 32.877' N	110° 54.270' W	
Medical	Duck Creek VED	Duck Creek VED	46° 29.802' N	110° 53.980' W	
Dip Site	Bark Creek Dip		46° 29.802' N	110° 53.980' W	
Water Source		Hayden ranch #1 Engstrom access	46° 28.282' N	110° 28.007' W	
Dip Point	12		46° 31.284' N	110° 51.130' W	
Dip Point	17	Chickadee Hill	46° 31.284' N	110° 51.130' W	
Dip Point	7		46° 32.225' N	110° 29.088' W	
Dip Point	11	Proposed	46° 29.204' N	110° 29.790' W	
Dip Point	13	Proposed	46° 31.526' N	110° 29.204' W	
Dip Point	14	Proposed DP staging area and porta potties and road barrier	46° 29.204' N	110° 29.204' W	
Dip Point	24	Drop point for approval and label	46° 29.075' N	110° 29.080' W	
Dip Point	20	Proposed	46° 29.204' N	110° 29.790' W	
Dip Point	31	Proposed	46° 30.526' N	110° 27.700' W	
Dip Point	35	Proposed	46° 31.526' N	110° 29.204' W	
Dip Point	36	Proposed	46° 30.526' N	110° 29.204' W	
Dip Point	38	Proposed	46° 29.204' N	110° 29.790' W	
Dip Point	22		46° 27.282' N	110° 53.510' W	
Dip Point	18		46° 24.282' N	110° 54.640' W	
Water Source		Trapper Ranch "reservoir" - on pipeline has depth and stem for possible dip site	46° 34.742' N	110° 14.820' W	
Dip Point	5	Phone electrical and other	46° 29.204' N	110° 27.700' W	
Dip Point	9		46° 35.742' N	110° 25.770' W	
Dip Point	14	Forest DP 14 per plan	46° 30.526' N	110° 14.820' W	
Dip Point	10		46° 30.200' N	110° 14.400' W	
Dip Point	27	Label as DP 10 as per DDM	46° 30.272' N	110° 20.500' W	
Dip Point	33	Proposed	46° 30.526' N	110° 25.250' W	
Dip Point	34	Proposed	46° 30.526' N	110° 25.250' W	
Dip Point	36	Proposed	46° 30.526' N	110° 25.250' W	
Dip Point	37	Proposed	46° 30.526' N	110° 25.250' W	
Dip Point	22		46° 27.282' N	110° 53.510' W	
Dip Point	18		46° 24.282' N	110° 54.640' W	
Water Source		DP 15 as per plan	46° 30.821' N	110° 13.100' W	
Water Source		per Timmy Barnes	46° 33.440' N	110° 13.400' W	
Dip Point	19	New Drop Point for DP-DQ	46° 22.514' N	110° 15.794' W	
Dip Point	16	Creek flow could be diverted up to 200 yards	46° 30.526' N	110° 14.820' W	
Dip Point	23	Wood Lake flow could be diverted up to 200 yards	46° 30.526' N	110° 14.820' W	
Water Source		Jackson Lake on Oak Ranch	46° 29.977' N	110° 08.000' W	
Dip Point	52		46° 29.977' N	110° 08.000' W	
Dip Point	46		46° 27.822' N	110° 18.000' W	
Dip Point	48		46° 28.200' N	110° 17.200' W	
Dip Point	49		46° 28.200' N	110° 17.200' W	
Dip Point	50		46° 28.200' N	110° 17.200' W	
Dip Point	51		46° 28.200' N	110° 17.200' W	
Dip Point	53		46° 28.200' N	110° 17.200' W	
Dip Point	54		46° 28.200' N	110° 17.200' W	
Dip Point	55		46° 28.200' N	110° 17.200' W	
Dip Point	56		46° 28.200' N	110° 17.200' W	
Dip Point	57		46° 28.200' N	110° 17.200' W	
Dip Point	58		46° 28.200' N	110° 17.200' W	
Dip Point	59		46° 28.200' N	110° 17.200' W	
Dip Point	60		46° 28.200' N	110° 17.200' W	
Dip Point	61		46° 28.200' N	110° 17.200' W	
Dip Point	62		46° 28.200' N	110° 17.200' W	
Dip Point	63		46° 28.200' N	110° 17.200' W	
Dip Point	64		46° 28.200' N	110° 17.200' W	
Dip Point	65		46° 28.200' N	110° 17.200' W	
Dip Point	66		46° 28.200' N	110° 17.200' W	
Dip Point	67		46° 28.200' N	110° 17.200' W	
Dip Point	68		46° 28.200' N	110° 17.200' W	
Dip Point	69		46° 28.200' N	110° 17.200' W	
Dip Point	70		46° 28.200' N	110° 17.200' W	
Dip Point	71		46° 28.200' N	110° 17.200' W	
Dip Point	72		46° 28.200' N	110° 17.200' W	
Dip Point	73		46° 28.200' N	110° 17.200' W	
Dip Point	74		46° 28.200' N	110° 17.200' W	
Dip Point	75		46° 28.200' N	110° 17.200' W	
Dip Point	76		46° 28.200' N	110° 17.200' W	
Dip Point	77		46° 28.200' N	110° 17.200' W	
Dip Point	78		46° 28.200' N	110° 17.200' W	
Dip Point	79		46° 28.200' N	110° 17.200' W	
Dip Point	80		46° 28.200' N	110° 17.200' W	
Dip Point	81		46° 28.200' N	110° 17.200' W	
Dip Point	82		46° 28.200' N	110° 17.200' W	
Dip Point	83		46° 28.200' N	110° 17.200' W	
Dip Point	84		46° 28.200' N	110° 17.200' W	
Dip Point	85		46° 28.200' N	110° 17.200' W	
Dip Point	86		46° 28.200' N	110° 17.200' W	
Dip Point	87		46° 28.200' N	110° 17.200' W	
Dip Point	88		46° 28.200' N	110° 17.200' W	
Dip Point	89		46° 28.200' N	110° 17.200' W	
Dip Point	90		46° 28.200' N	110° 17.200' W	
Dip Point	91		46° 28.200' N	110° 17.200' W	
Dip Point	92		46° 28.200' N	110° 17.200' W	
Dip Point	93		46° 28.200' N	110° 17.200' W	
Dip Point	94		46° 28.200' N	110° 17.200' W	
Dip Point	95		46° 28.200' N	110° 17.200' W	
Dip Point	96		46° 28.200' N	110° 17.200' W	
Dip Point	97		46° 28.200' N	110° 17.200' W	
Dip Point	98		46° 28.200' N	110° 17.200' W	
Dip Point	99		46° 28.200' N	110° 17.200' W	
Dip Point	100		46° 28.200' N	110° 17.200' W	

