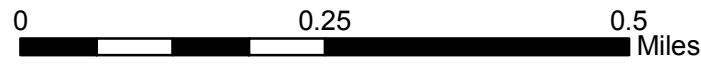
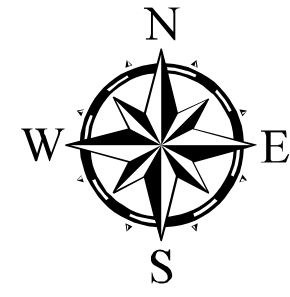


Ellis Fire Rehab Map

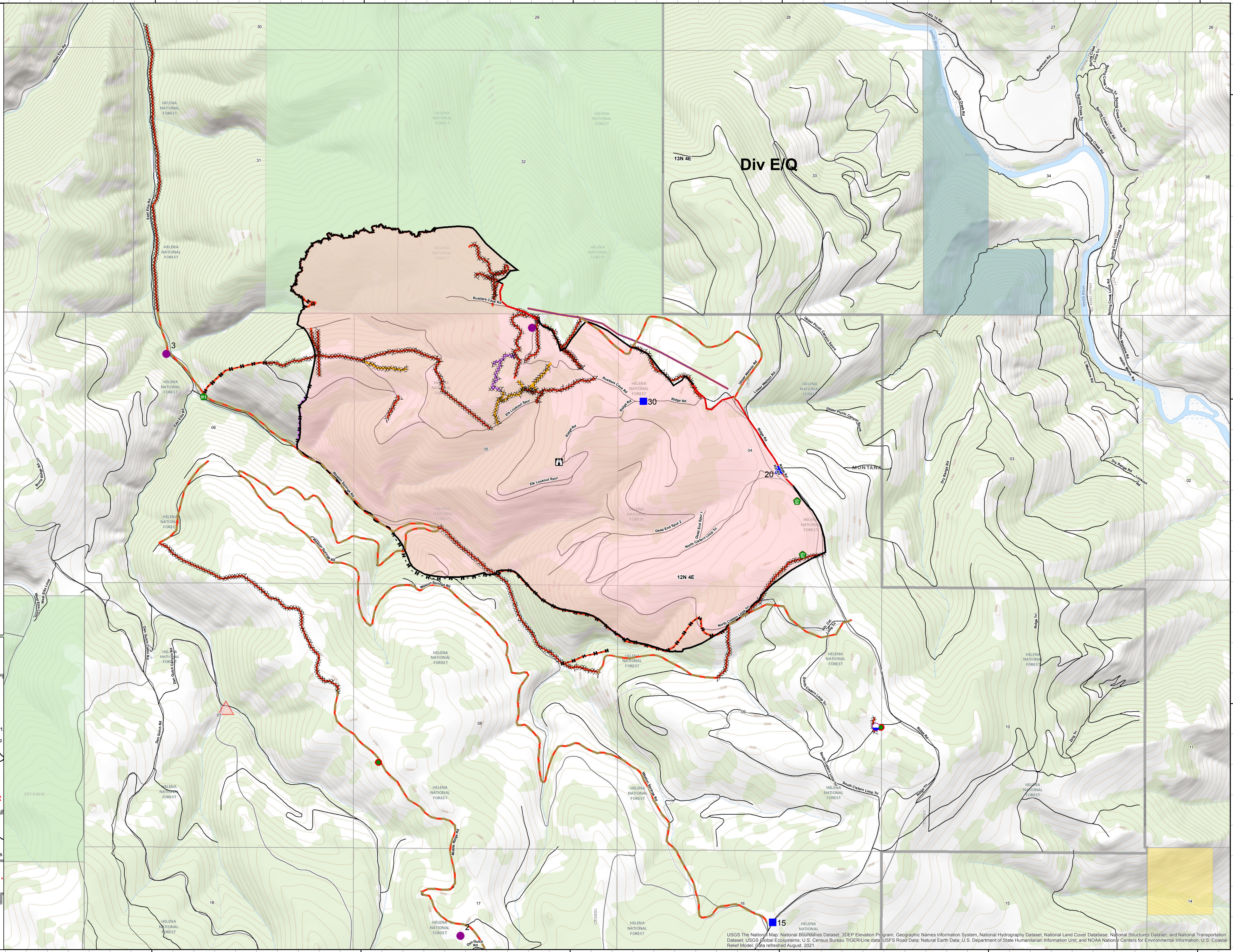
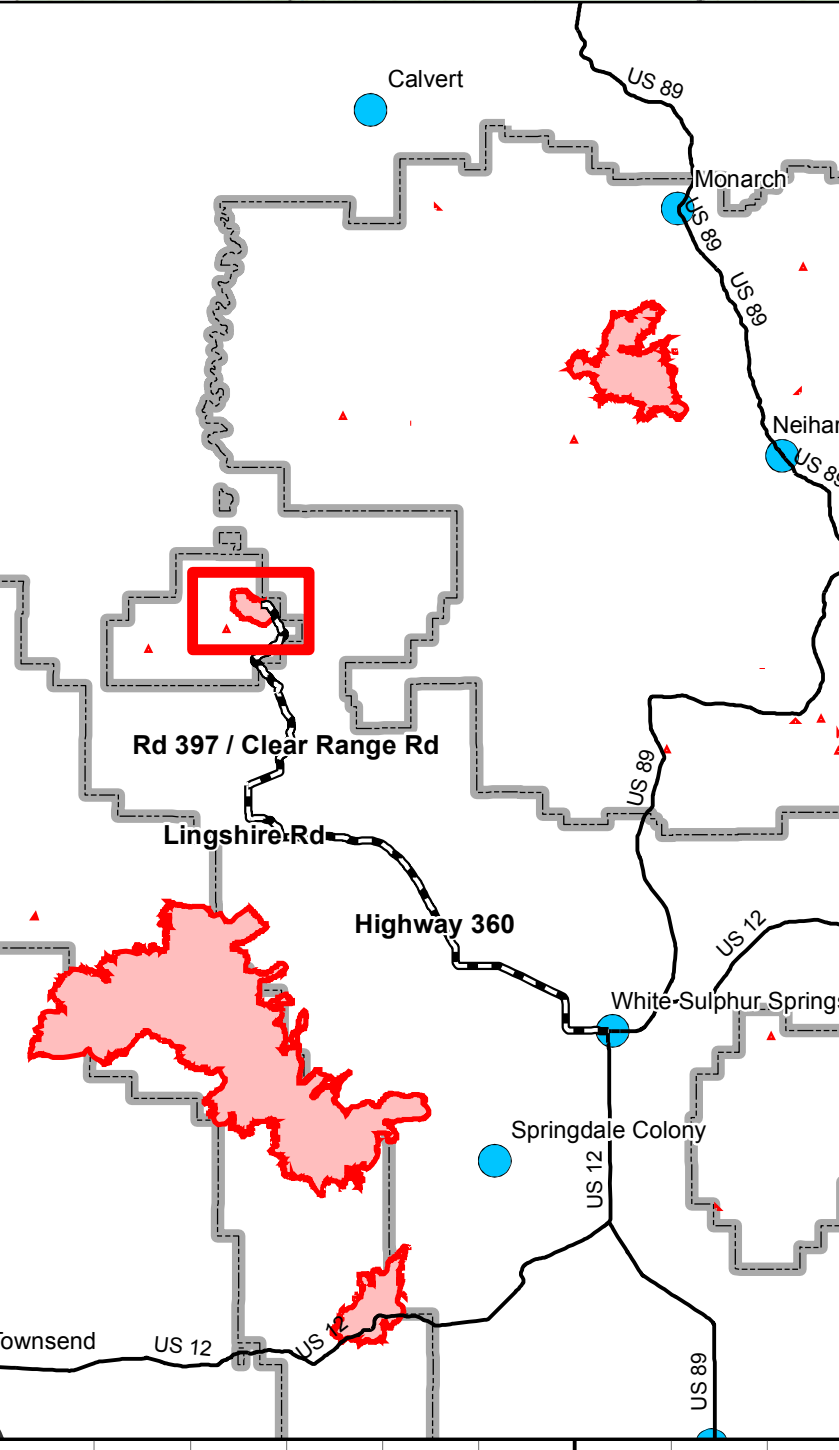
09/02/2021



- Legend**
- Repair Status**
 - Completed - Inspected
 - Completed - Ready for Inspection
 - In Progress
 - Other - See Comments
 - Repair Needed
 - Unknown
 - Label Point**
 - Dip Site**
 - Helispot**
 - Drop Point**
 - Lookout**
 - Repair Point**
 - Fence - Cut/Damaged**
 - Clean Up Area**
 - Repair Status**
 - Completed - Inspected
 - Completed - Ready for Inspection
 - In Progress
 - Other - See Comments
 - Repair Needed
 - Unknown
 - Completed Dozer Line**
 - Completed Hand Line**
 - Road Repair**
 - Retardant Drop**
 - Fire Edge**
 - Contained Line**
 - Wildfire Daily Fire Perimeter**
 - Administrative Boundary**
 - Public Lands (MSL)**
 - Ownership**
 - Montana Fish, Wildlife, and Parks
 - US Bureau of Land Management
 - US Forest Service
 - Roads

The Forest Service uses the most current and complete data available. GIS data and product accuracy may vary. They may be developed from sources of differing accuracy, accurate only at certain scales, based on modeling or interpretation, incomplete while being created or revised, etc. Using GIS products for purposes other than those for which they were created, may yield inaccurate or misleading results. The Forest Service reserves the right to correct, update, modify, or replace, GIS products without notification.

By: Brazier - 9/2/2021
T:\F\SNFS\Helena\LewisClark\Programs\100Fire\mgt\GIS\Zone\H2021_DivideComplex



USGS The National Map: National Boundaries Dataset, 3DEP Elevation Program, Geographic Names Information System, National Hydrography Dataset, National Land Cover Database, National Structures Dataset, and National Transportation Dataset; USGS Global Ecosystems; U.S. Census Bureau TIGER/Line data; USFS Road Data; Natural Earth Data; U.S. Department of State Humanitarian Information Unit; and NOAA National Centers for Environmental Information; U.S. Coastal Relief Model; 2016, refreshed August, 2021.