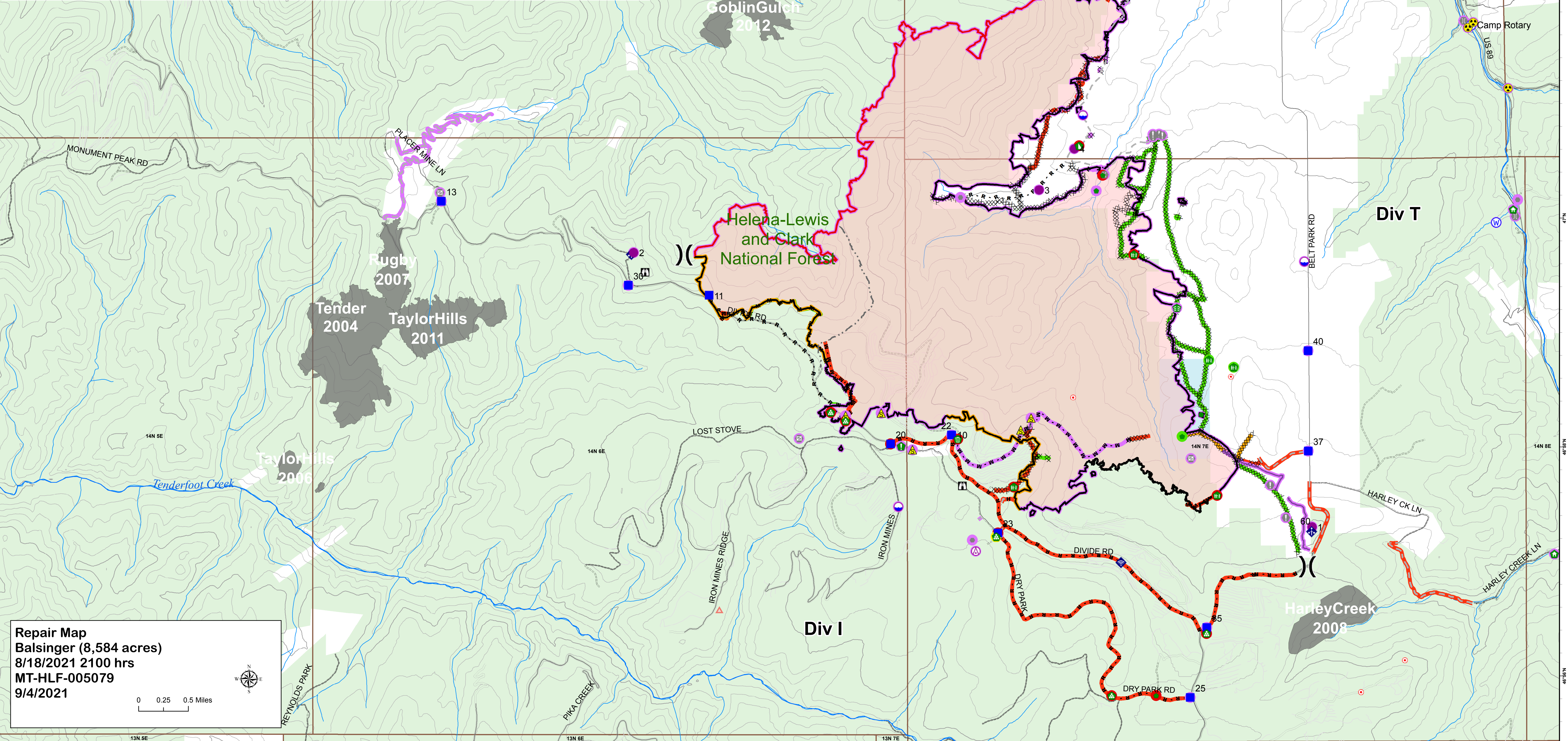


⚠ Aerial Hazard	🏠 Structure Wrap	Event Point - Status	Event Line - Status
📍 Dip Site	🌳 Stream Crossing	Repair Status	Repair Status
🚁 Helispot	📍 Resource Location	🟢 Completed - Inspected	🟢 Completed - Inspected
⎓ Division Break	📍 Repair Point	🟡 In Progress	🟠 Completed - Ready for Inspection
📍 Drop Point	📍 Landing or Log Deck	🔴 Repair Needed	⚪ Other - See Comments
🚧 Closure	📍 Fence - Cut/Damaged	🟣 Unknown	🔴 Repair Needed
👁 Lookout	📍 Dozer Push	⚡ Completed Dozer Line	🟡 Unknown
🔥 Hot Spot - Spot Fire	📍 Clean Up Area	⊙⊙⊙ Completed Fuel Break	🔴 Wildfire Daily Fire Perimeter
🚧 Value at Risk	📍 Mobile Weather Unit	⊙⊙⊙ Completed Hand Line	🟡 Ownership
📍 Other	📍 Internet Access	⊙⊙⊙ Completed Mixed Construction Line	🟢 State of Montana
🚧 Gate	📍 Safety Zone	⊙⊙⊙ Completed Road as Line	🟢 USFS
🚧 Bridge	📍 Hazard	⊙⊙⊙ Planned Line (Misc Type)	
📍 Water Development or Draft Site	📍 Water Source	⊙⊙⊙ Access or Improved Road	
		⊙⊙⊙ Other	
		🟢 Repair Line	
		🟡 Retardant Drop	
		🔴 Fire Edge	
		⚫ Contained Line	

Author: jfrazer
 Date: 9/4/2021, 2:09:55 AM
 T:\FS\NFS\HelenaLewisClark\Program\5100FireMgmt\GIS\ZoneKH12021_DivideComplex\projects



Repair Map
 Balsinger (8,584 acres)
 8/18/2021 2100 hrs
 MT-HLF-005079
 9/4/2021

0 0.25 0.5 Miles