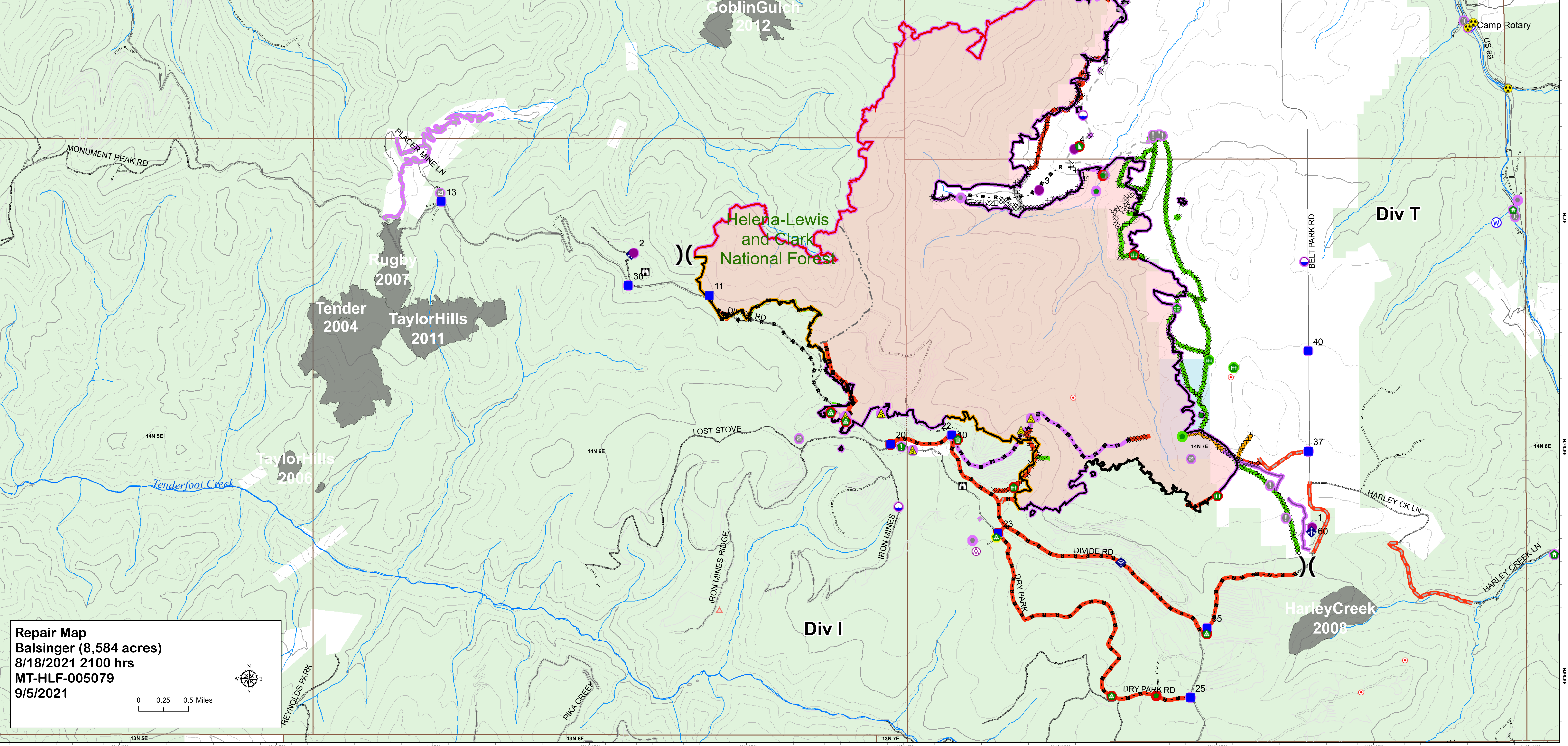


⚠ Aerial Hazard	🏠 Structure Wrap	<b>Event Point - Status</b>	<b>Event Line - Status</b>
📍 Dip Site	🌳 Stream Crossing	<b>Repair Status</b>	<b>Repair Status</b>
🚁 Helispot	🌳 Resource Location	🟢 Completed - Inspected	🟢 Completed - Inspected
⎓ Division Break	📍 Repair Point	🟡 In Progress	🟠 Completed - Ready for Inspection
📍 Drop Point	🏠 Landing or Log Deck	🔴 Repair Needed	⚪ Other - See Comments
🚧 Closure	🏠 Fence - Cut/Damaged	🟣 Unknown	🔴 Repair Needed
👁 Lookout	🏠 Dozer Push	⚪ Completed Dozer Line	⚪ Unknown
🔥 Hot Spot - Spot Fire	🏠 Clean Up Area	⦿ Completed Fuel Break	🔴 Wildfire Daily Fire Perimeter
📍 Value at Risk	🏠 Mobile Weather Unit	⦿ Completed Hand Line	🇺🇸 Ownership
📍 Other	📡 Internet Access	⦿ Completed Mixed Construction Line	🇺🇸 State of Montana
🚪 Gate	🚧 Safety Zone	⦿ Completed Road as Line	🇺🇸 USFS
🌉 Bridge	⚠ Hazard	— Planned Line (Misc Type)	
🏠 Water Development or Draft Site	🚰 Water Source	— Access or Improved Road	
		— Other	
		— Repair Line	
		— Retardant Drop	
		— Fire Edge	
		— Contained Line	

Author: jfrazer  
 Date: 9/5/2021 , 1:11:53 AM  
 T:\FS\NFS\HelenaLewisClark\Program\5100FireMgmt\GIS\ZoneKH2021\_DivideComplex\projects



**Repair Map**  
 Balsinger (8,584 acres)  
 8/18/2021 2100 hrs  
 MT-HLF-005079  
 9/5/2021

0 0.25 0.5 Miles