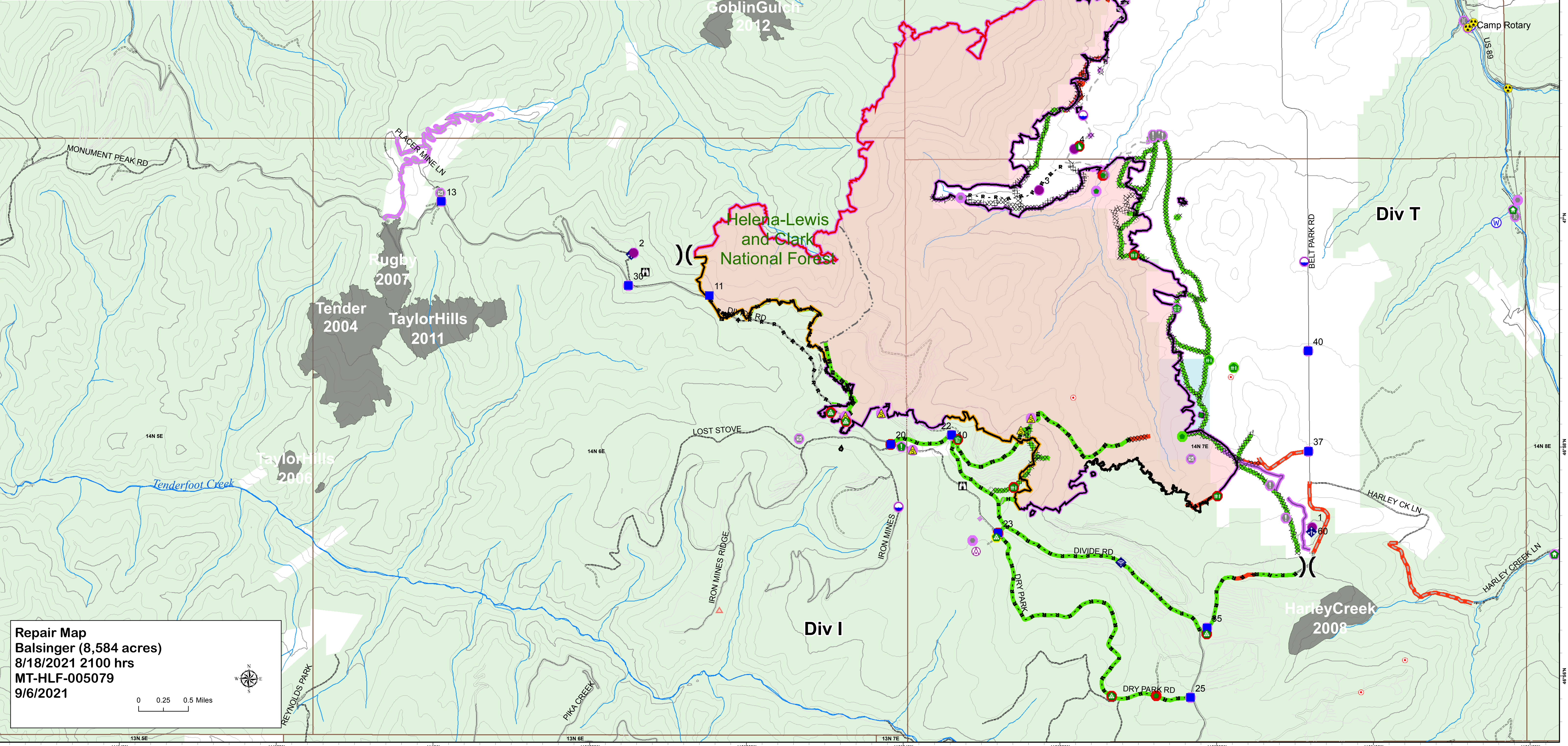


⊗ Aerial Hazard	🏠 Structure Wrap	<b>Event Point - Status</b>	<b>Event Line - Status</b>
📍 Dip Site	🌳 Stream Crossing	<b>Repair Status</b>	<b>Repair Status</b>
📍 Helispot	🌳 Resource Location	🟢 Completed - Inspected	🟢 Completed - Inspected
⎓ Division Break	📍 Repair Point	🟡 In Progress	🟠 Completed - Ready for Inspection
📍 Drop Point	🏠 Landing or Log Deck	🔴 Repair Needed	🟡 Repair Needed
📍 Closure	🏠 Fence - Cut/Damaged	🟡 Unknown	🟡 Unknown
📍 Lookout	🏠 Dozer Push	⊗⊗⊗ Completed Dozer Line	🔴 Wildfire Daily Fire Perimeter
📍 Hot Spot - Spot Fire	🏠 Clean Up Area	⊗⊗⊗ Completed Fuel Break	🇺🇸 Ownership
📍 Value at Risk	🏠 Mobile Weather Unit	⊗⊗⊗ Completed Hand Line	🇺🇸 State of Montana
📍 Other	📍 Internet Access	⊗⊗⊗ Completed Mixed Construction Line	🇺🇸 USFS
📍 Gate	📍 Safety Zone	⊗⊗⊗ Completed Road as Line	
📍 Bridge	📍 Hazard	⊗⊗⊗ Planned Line (Misc Type)	
📍 Water Development or Draft Site	📍 Water Source	⊗⊗⊗ Access or Improved Road	
		⊗⊗⊗ Other	
		— Repair Line	
		— Retardant Drop	
		— Fire Edge	
		— Contained Line	

Author: jfrazier  
 Date: 9/5/2021, 10:44:33 PM  
 T:\FS\NFS\HelenaLewisClark\Program\5100FireMgmt\GIS\ZoneKH2021\_DivideComplex\projects



**Repair Map**  
 Balsinger (8,584 acres)  
 8/18/2021 2100 hrs  
 MT-HLF-005079  
 9/6/2021