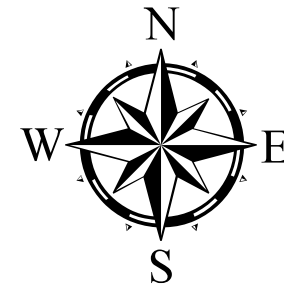
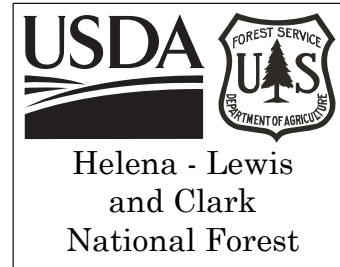


# Ellis Fire Rehab Map 09/11/2021



0 0.25 0.5 Miles

- Legend**
- Repair Status**
- Completed - Inspected
  - Completed - Ready for Inspection
  - In Progress
  - Other - See Comments
  - Repair Needed
  - Unknown
- Other Symbols**
- Label Point
  - Dip Site
  - Heliport
  - Medical
  - Drop Point
  - Lookout
  - Landmark
  - Repair Point
  - Fence - Cut/Damaged
  - Dozer Push
  - Clean Up Area
  - Internet Access
- Repair Status (Line)**
- Completed - Inspected
  - Completed - Ready for Inspection
  - In Progress
  - Other - See Comments
  - Repair Needed
  - Unknown
- Construction Lines**
- XXX Completed Dozer Line
  - H - Completed Hand Line
  - M - Completed Mixed Construction Line
  - R - Completed Road as Line
- Repair Line**
- Repair Line
  - Road Repair
  - Retardant Drop
  - Contained Line
  - Wildfire Daily Fire Perimeter
- Public Lands (MSL)**
- Montana Fish, Wildlife, and Parks
  - US Bureau of Land Management
  - US Forest Service

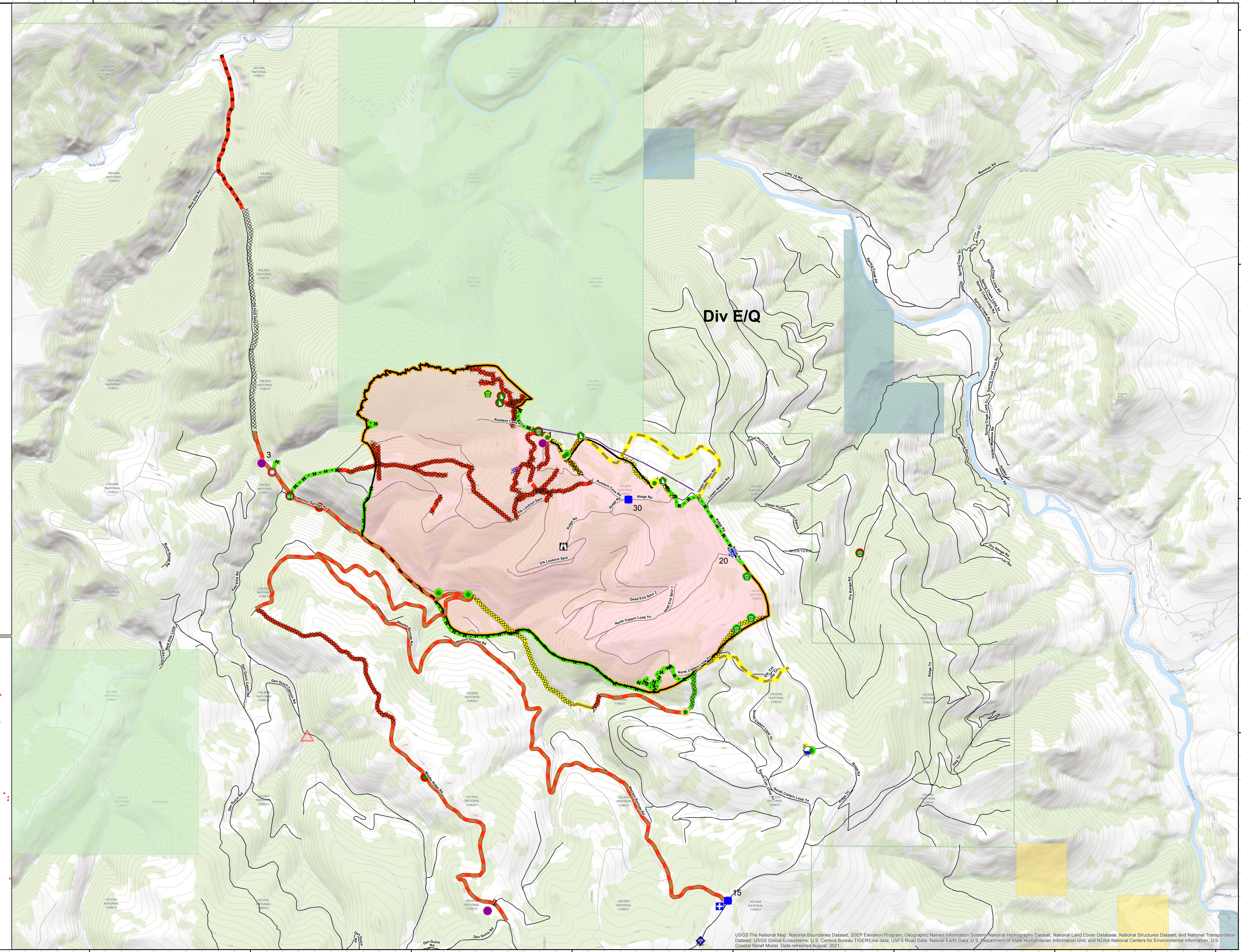
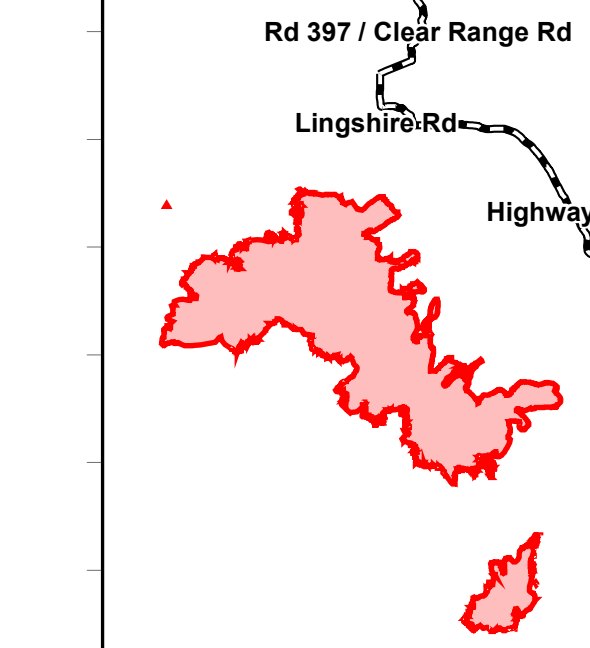
The Forest Service uses the most current and complete data available. GIS data and product accuracy may vary. They may be developed from sources of differing accuracy, accurate only at certain scales, based on modeling or interpretation, incomplete while being created or revised, etc. Using GIS products for purposes other than those for which they were created, may yield inaccurate or misleading results. The Forest Service reserves the right to correct, update, modify, or replace, GIS products without notification.

By: Frazer - 9/11/2021 - T:\FSNF\HelenaLewisClark\Program\5100FireMgmt\GIS\ZoneKH2021\_DivideComplex

T13N

46°5'N

T12N



T13N

46°5'N

T12N