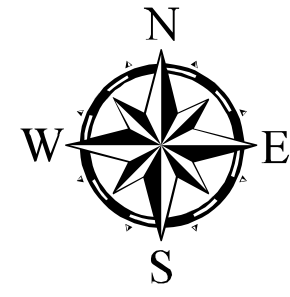
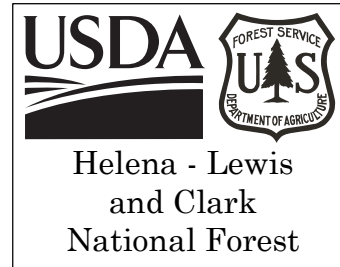


Ellis Fire Rehab Map 09/12/2021



- Legend**
- Repair Status
 - Completed - Inspected
 - Completed - Ready for Inspection
 - In Progress
 - Other - See Comments
 - Repair Needed
 - Unknown
 - Label Point
 - Dip Site
 - Helispot
 - Medical
 - Drop Point
 - Lookout
 - Landmark
 - Repair Point
 - Fence - Cut/Damaged
 - Dozer Push
 - Clean Up Area
 - Internet Access

- Repair Status
- Completed - Inspected
- Completed - Ready for Inspection
- In Progress
- Other - See Comments
- Repair Needed
- Unknown
- Completed Dozer Line
- Completed Hand Line
- Completed Mixed Construction Line
- Completed Road as Line
- Repair Line
- Road Repair
- Retardant Drop
- Contained Line
- Wildfire Daily Fire Perimeter
- Administrative Boundary

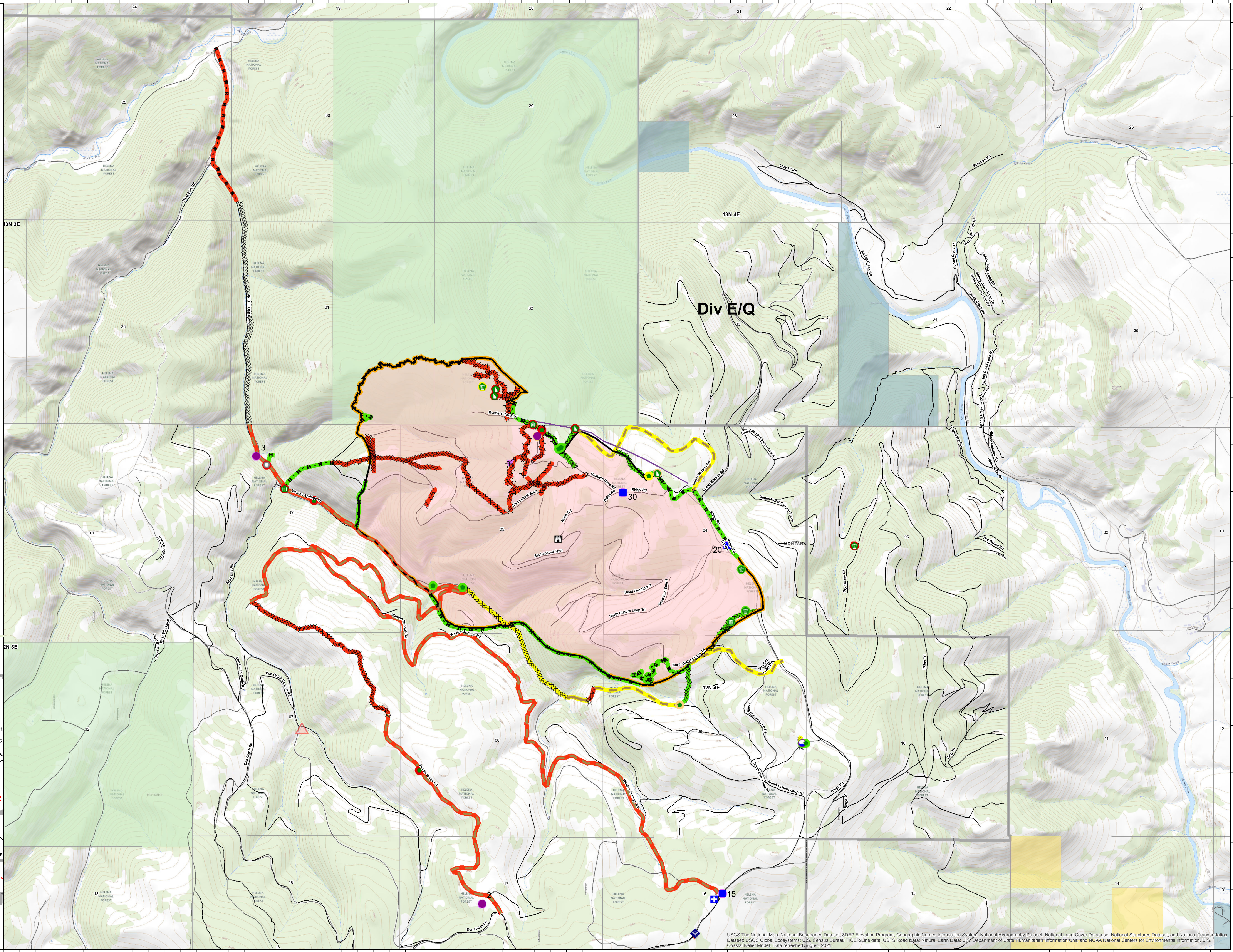
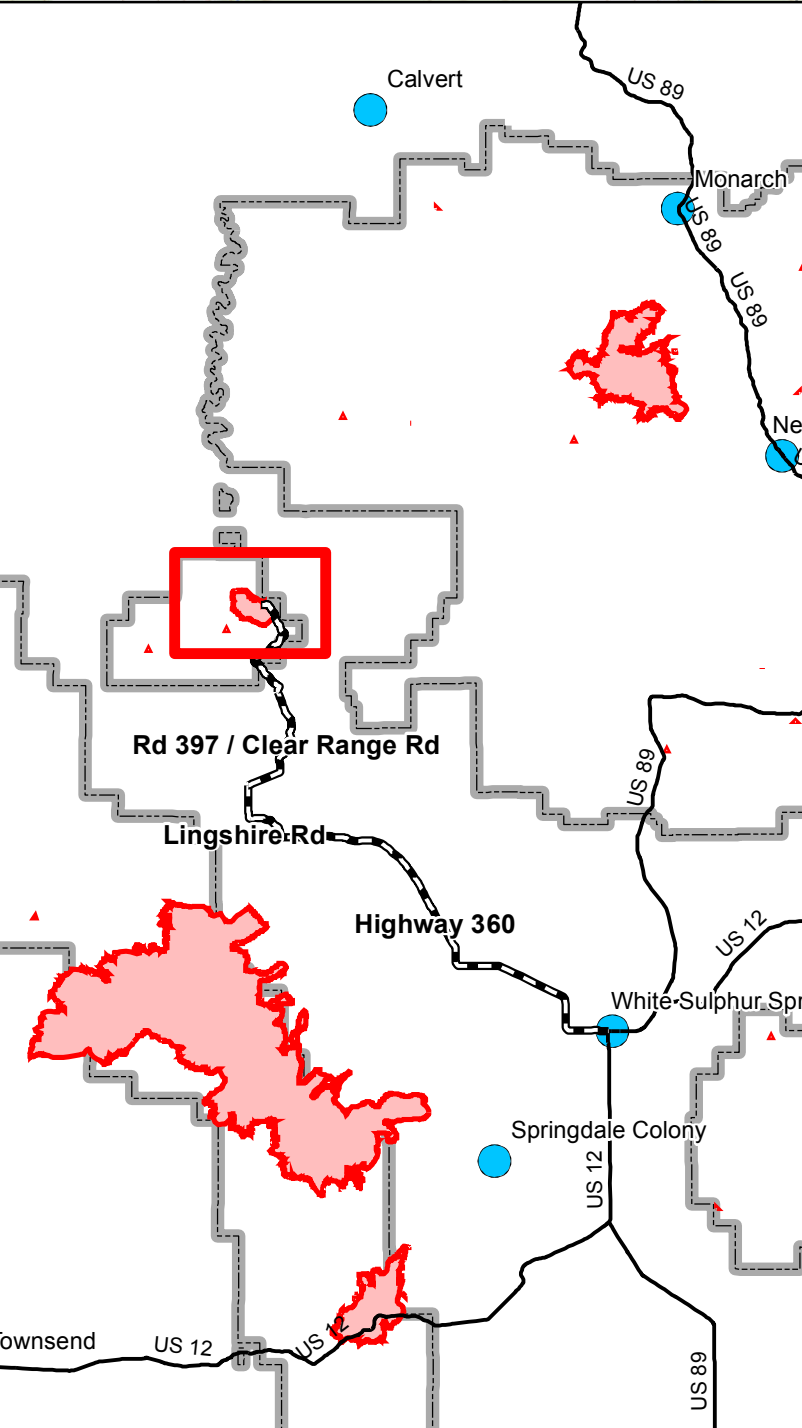
Public Lands (MSL)

- Montana Fish, Wildlife, and Parks
- US Bureau of Land Management
- US Forest Service

Ownership

- Montana Fish, Wildlife, and Parks
- US Bureau of Land Management
- US Forest Service
- Roads

By: Brazier - 9/11/2021
T:\FSNP\SI\HelenaLewisClark\Program\5100Fire\mgt\GIS\Zone\KH2021_DivideComplex



USGS The National Map: National Boundaries Dataset, 3DEP Elevation Program, Geographic Names Information System, National Hydrography Dataset, National Land Cover Database, National Structures Dataset, and National Transportation Dataset; USGS Global Ecosystems; U.S. Census Bureau TIGER/Line data; USFS Road Data; Natural Earth Data; U.S. Department of State Humanitarian Information Unit; and NOAA National Centers for Environmental Information, U.S. Coastal Relief Model. Data refreshed August, 2021.