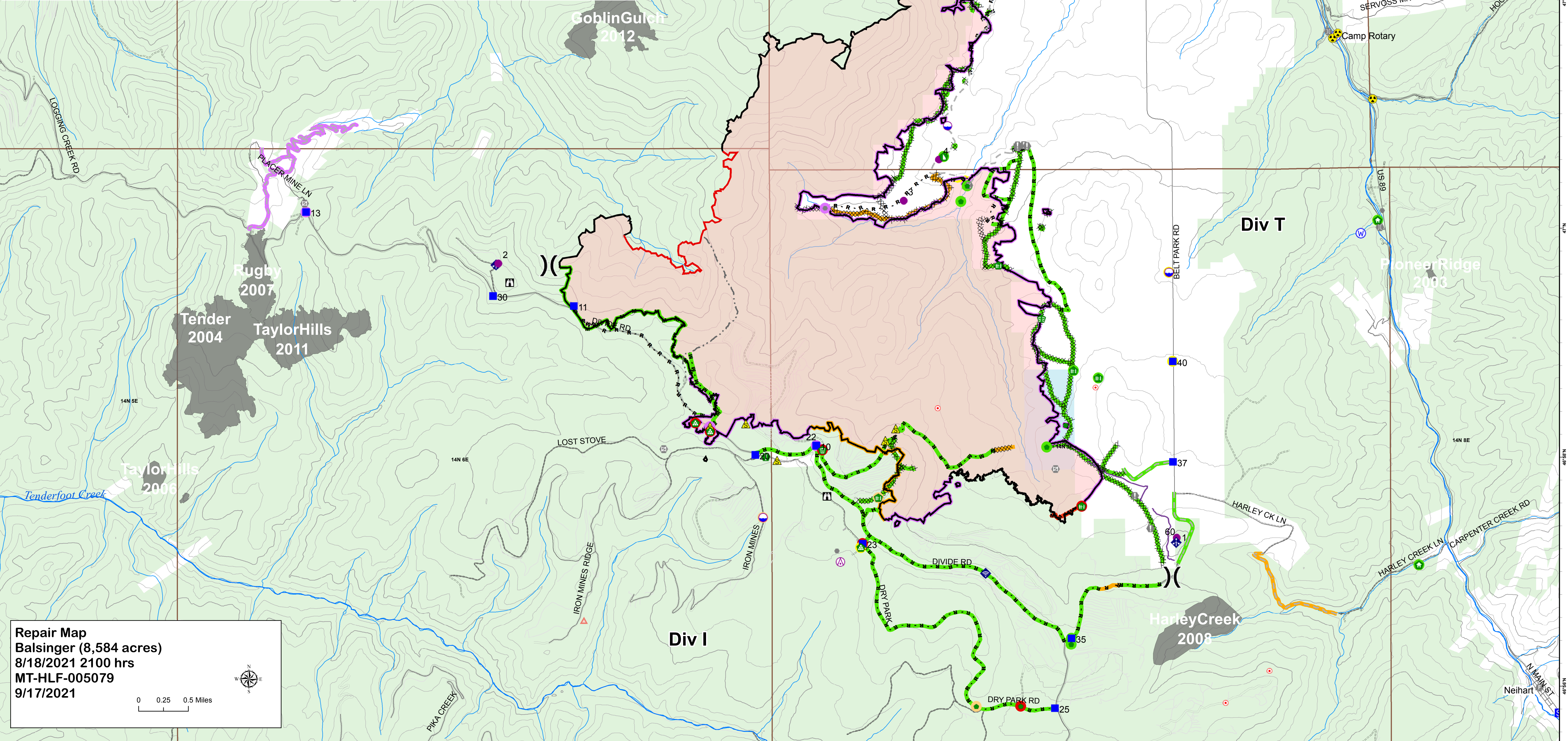


⊗ Aerial Hazard	🏠 Water Development or Draft Site	Event Point - Status	Event Line - Status
📍 Dip Site	🏠 Structure Wrap	🟢 Completed - Inspected	🟢 Completed - Inspected
📍 Helispot	🏠 Stream Crossing	🟡 Completed - Ready for Inspection	🟡 Completed - Ready for Inspection
⎓ Division Break	📍 Resource Location	🟠 In Progress	🟠 In Progress
📍 Drop Point	📍 Repair Point	🔴 Repair Needed	🔴 Repair Needed
📍 Closure	📍 Landing or Log Deck	🟡 Unknown	🟡 Unknown
📍 Staging Area	📍 Fence - Cut/Damaged	🔴 Wildfire Daily Fire Perimeter	🔴 Wildfire Daily Fire Perimeter
📍 Lookout	📍 Dozer Push	Ownership	Ownership
📍 Hot Spot - Spot Fire	📍 Clean Up Area	🟦 State of Montana	🟦 State of Montana
📍 Value at Risk	📍 Mobile Weather Unit	🟩 USFS	🟩 USFS
📍 Other	📍 Internet Access		
📍 Gate	📍 Safety Zone	⊗⊗⊗ Completed Dozer Line	⊗⊗⊗ Completed Dozer Line
📍 Fire Station	📍 Hazard	⊗⊗ Completed Fuel Break	⊗⊗ Completed Fuel Break
📍 Bridge	📍 Water Source	⊗⊗⊗ Completed Hand Line	⊗⊗⊗ Completed Hand Line
		⊗⊗⊗ Completed Mixed Construction Line	⊗⊗⊗ Completed Mixed Construction Line
		⊗⊗⊗ Completed Road as Line	⊗⊗⊗ Completed Road as Line
		⊗⊗⊗ Access or Improved Road	⊗⊗⊗ Access or Improved Road
		⊗⊗⊗ Other	⊗⊗⊗ Other
		— Repair Line	— Repair Line
		— Retardant Drop	— Retardant Drop
		— Fire Edge	— Fire Edge
		— Contained Line	— Contained Line

Author: jfrazer
 Date: 9/17/2021 12:46:02 AM
 T:\FS\NFS\Helena\LewisClark\Program\5100FireMgmt\GIS\ZoneK1\2021_DivideComplex\projects



Repair Map
 Balsinger (8,584 acres)
 8/18/2021 2100 hrs
 MT-HLF-005079
 9/17/2021

0 0.25 0.5 Miles