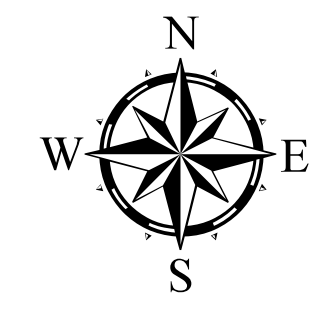


Ellis Fire Rehab Map

09/17/2021

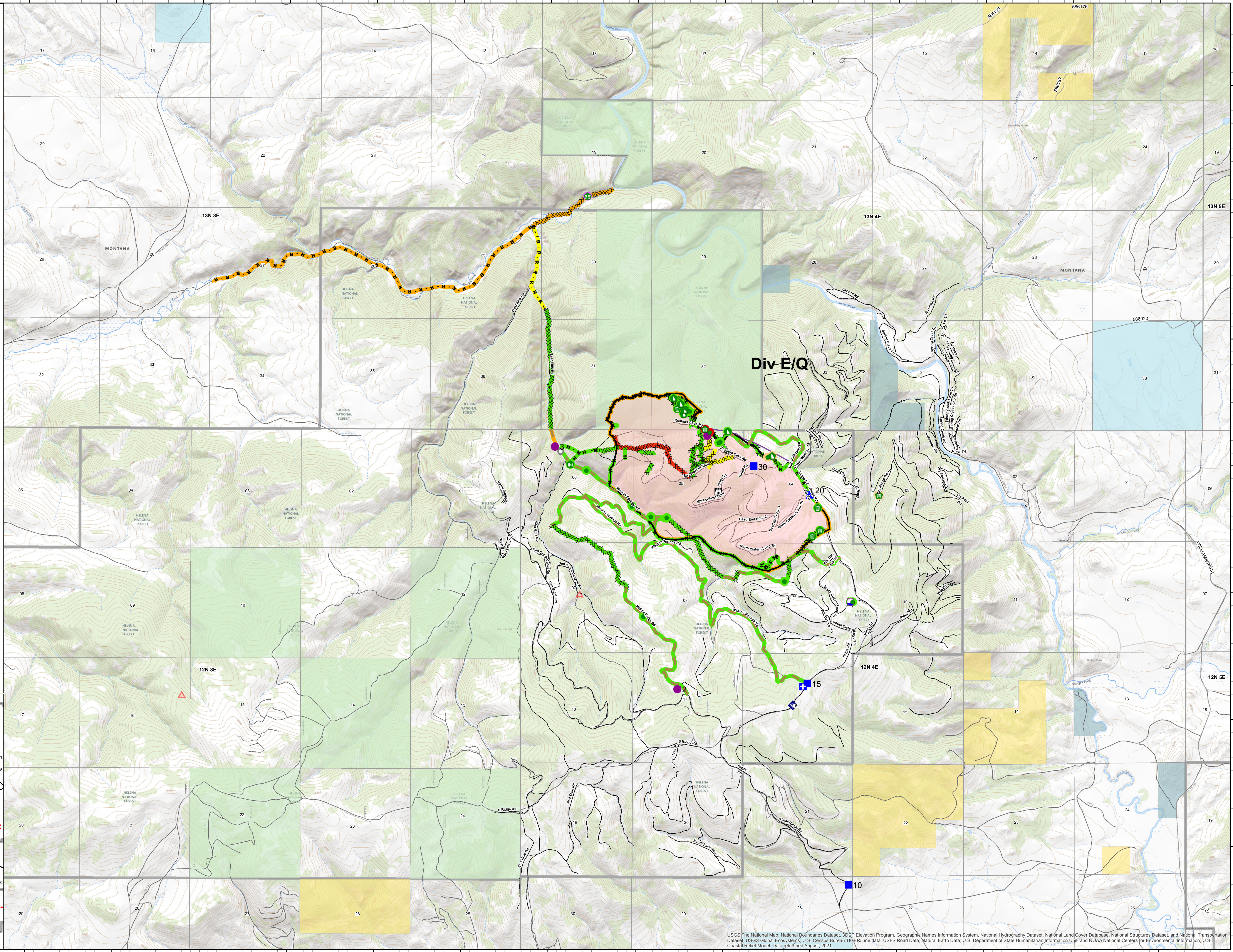
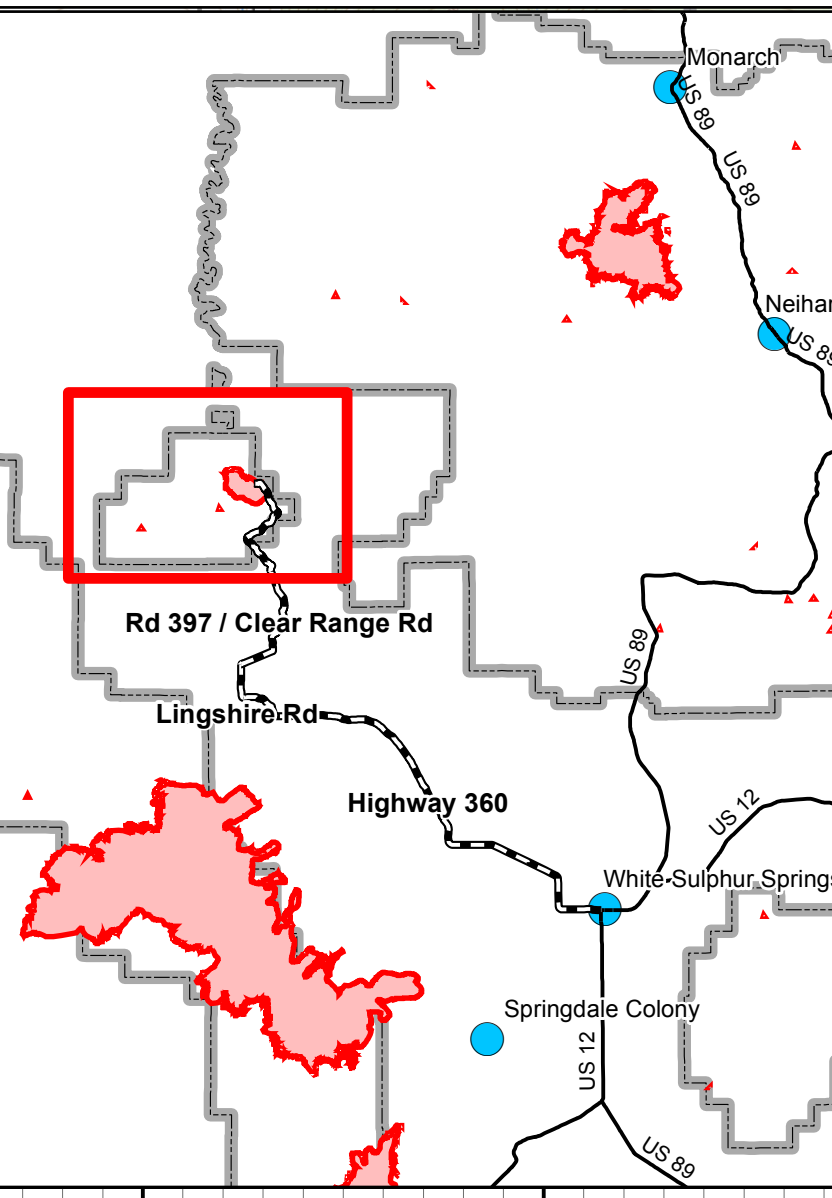


0 0.25 0.5 Miles

- Legend**
- Repair Status**
- Completed - Inspected
 - Completed - Ready for Inspection
 - In Progress
 - Other - See Comments
 - Repair Needed
 - Unknown
- Repair Status**
- Completed - Inspected
 - Completed - Ready for Inspection
 - In Progress
 - Other - See Comments
 - Repair Needed
 - Unknown
- XXX Completed Dozer Line
 H Completed Hand Line
 M Completed Mixed Construction Line
 R Completed Road as Line
 — Repair Line
 — Road Repair
 — Retardant Drop
 — Contained Line
 — Wildfire Daily Fire Perimeter
 — Administrative Boundary
- MVUM Road Allow (Roads open to motorized public use)**
- SYMBOL**
- 15 - Other Public Roads
- Public Lands (MSL)**
- Ownership**
- State of Montana
 - Montana Fish, Wildlife, and Parks
 - US Bureau of Land Management
 - US Forest Service
 - Roads

The Forest Service uses the most current and complete data available. GIS data and product accuracy may vary. They may be developed from sources of differing accuracy, accurate only at certain scales, based on modeling or interpretation, incomplete while being created or revised, etc. Using GIS products for purposes other than those for which they were created, may yield inaccurate or misleading results. The Forest Service reserves the right to correct, update, modify, or replace, GIS products without notification.

By: #razer - 9/16/2021 -
T:\FS\NF\Helena\LewisClark\Program\5100FireMgmt\GIS\ZoneKH2021_DivideComplex



USGS The National Map: National Boundaries Dataset, 30m P Elevation Program, Geographic Names Information System, National Hydrography Dataset, National Land Cover Database, National Structures Dataset, and National Transportation Dataset; USGS Global Ecosystems; U.S. Census Bureau TIGER/Line data; USFS Road Data; Natural Earth Data; U.S. Department of State Humanitarian Information Unit; and NOAA National Centers for Environmental Information, U.S. Coastal Relief Model. Date refreshed August, 2021.