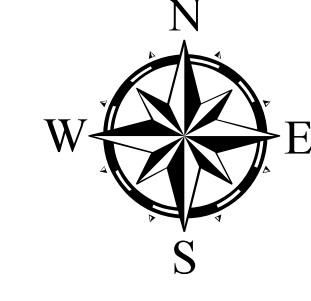


R2E R3E 111°15'W R4E R5E

Ellis Fire Rehab Map

09/19/2021



Legend

Repair Status

- Completed - Inspected
- Completed - Ready for Inspection
- In Progress
- Other - See Comments
- Repair Needed
- Unknown

Label Point

- Dip Site
- Helispot
- Medical
- Drop Point
- Lookout
- Landmark
- Stream Crossing
- Repair Point
- Fence - Cut/Damaged
- Dozer Push
- Clean Up Area
- Internet Access

Repair Status

- Completed - Inspected
- Completed - Ready for Inspection
- In Progress
- Other - See Comments
- Repair Needed
- Unknown

Completed Dozer Line

- Completed Hand Line
- Completed Mixed Construction Line
- Completed Road as Line
- Repair Line
- Road Repair
- Retardant Drop
- Contained Line
- Wildfire Daily Fire Perimeter
- Administrative Boundary

MVUM Road Allow (Roads open to motorized public use)

SYMBOL

- 15 - Other Public Roads

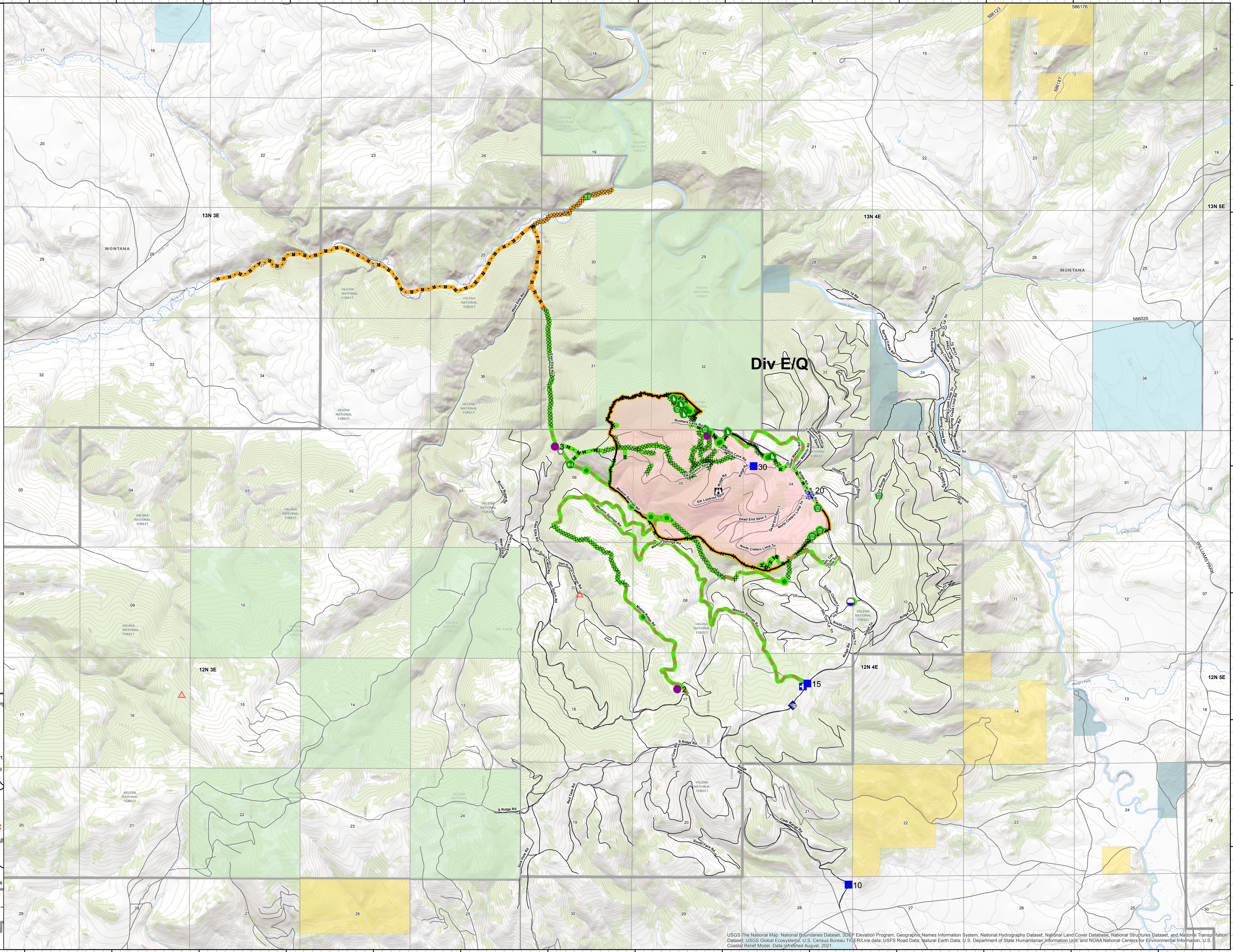
Public Lands (MSL)

Ownership

- State of Montana
- Montana Fish, Wildlife, and Parks
- US Bureau of Land Management
- US Forest Service
- Roads

The Forest Service uses the most current and complete data available. GIS data and product accuracy may vary. They may be developed from sources of differing accuracy, accurate only at certain scales, based on modeling or interpretation, incomplete while being created or revised, etc. Using GIS products for purposes other than those for which they were created, may yield inaccurate or misleading results. The Forest Service reserves the right to correct, update, modify, or replace, GIS products without notification.

By: #razer - 9/19/2021 - T:\FS\NFS\HelenaLewisClark\Program\5100Fire\mgmt\GIS\ZoneKH2021_DivideComplex



T13N

46°51'N

T12N

46°48'N

T13N

46°51'N

T12N

46°48'N

R2E R3E 111°15'W R4E R5E