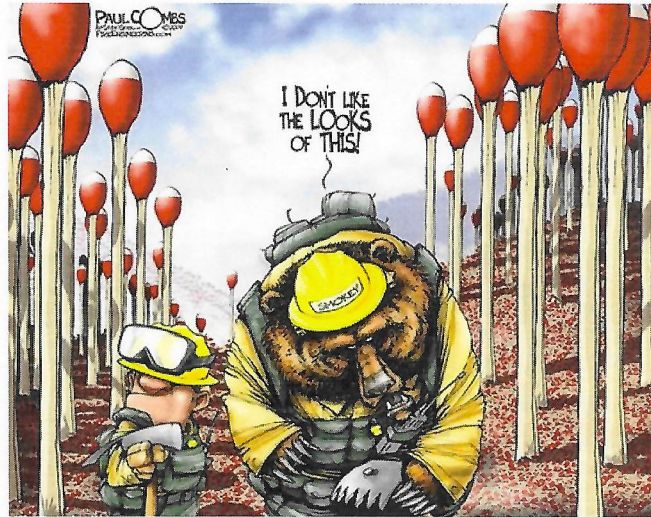


DIXIE FIRE

ID-NCF-000448

P1N402 (0117)



Jumbo Fire

INCIDENT ACTION PLAN

Tuesday August 10, 2021



For IAP, Maps, Check-in and Demob

INCIDENT OBJECTIVES	1. Incident Name DIXIE / JUMBO	2. Date Prepared August 9, 2021	3. Time 2100
4. Operational Period: August 10, 2021 DAY OPERATIONS 0600 - 2000			
Incident Objectives <ol style="list-style-type: none"> 1. The Dixie and Jumbo fires will be managed using a variety of suppression strategies based on firefighter safety, availability of firefighting resource and threats to values at risk. 2. Maintain access for firefighting resources and public egress within the Dixie and Jumbo fires' planning area. 3. Execute strategies and tactics to reduce fire impacts to primary private and commercial structures, where possible. 4. Consider efforts to moderate fire behavior to reduce probability of disrupting primary distribution lines to affected communities and communication sites associated with emergency response. 5. Reduce negative impacts of fire management actions on cultural and natural features in the area, where safety and efficacy of suppression actions do not conflict with this objective. Order of priority: Nationally significant cultural resources, critical anadromous fish habitat and other sensitive watershed conditions identified by Agency Administrators. Incident Requirements <ol style="list-style-type: none"> 1. Utilize risk-informed decision making to reduce fire fighter exposure to hazards while providing for public safety. 2. Utilize pre-existing plans for community protection opportunities in North Star, Black Diamond, Comstock, Dixie, Mallard Ranch, Red River, Concord, Humptown, Frogtown, Fivemile Bar, Mackay Bar, and Copenhagen Ranch. 3. Obtain approval for use of mechanized equipment in the Gospel Hump and Frank Church – River of No Return Wilderness areas. 4. Document the quantity and placement of long-term retardant. Minimize the use of long-term retardant in designated wilderness areas, except to protect human life or to achieve point protection objectives. 5. Any mechanical equipment operations within Inventoried Roadless Areas need prior approval from Agency Administrator. 6. Provide current and accurate information to the media, public, and local office holders as to the status of fires within the complex. 7. Provide for rehabilitation of areas impacted by incident operations in coordination with jurisdictional agency's resource advisor(s). 			
6. Weather Forecast for Period: <i>See attached Fire Weather Forecast</i>			
7. General Safety Message: <i>See attached Safety Message</i>			
8. Attachments (mark if attached)			
<input checked="" type="checkbox"/>	ICS 203 Organization List	<input checked="" type="checkbox"/>	ICS 205 Communication Plan
<input checked="" type="checkbox"/>	Fire Weather Forecast	<input checked="" type="checkbox"/>	Safety Message
<input checked="" type="checkbox"/>	Fire Behavior Forecast	<input checked="" type="checkbox"/>	Incident within an Incident
<input checked="" type="checkbox"/>	ICS 204 Division Assignment Lists	<input checked="" type="checkbox"/>	ICS 206WF Medical Plan
<input checked="" type="checkbox"/>	ICS 220 Air Operations Summary	<input type="checkbox"/>	
9. Prepared by (Planning Section Chief) 		9. Approved by (Incident Commander) 	

ORGANIZATION ASSIGNMENT LIST			1. INCIDENT NAME DIXIE / JUMBO	2. DATE PREPARED 8/9/21	3. TIME PREPARED 2100
4. OPERATIONAL PERIOD: August 10, 2021 0600-2000					
5. INCIDENT COMMAND AND STAFF			9. OPERATIONS SECTION		
INCIDENT COMMANDER	Joe Sampson		PLANNING OPS:	Ashley Sites	
INFORMATION OFFICER	Terina Goicoechea; Erik Broeder (T)		LINE OPS:	Kevin Smith	
LIAISON OFFICER					
SAFETY OFFICER:	David Smith; Lee Hahnkamp (T); Leroy Holguin (T)				
			<u>DIXIE</u>		
			DIVISION/GROUP	C	TFLD Ryan Green
			DIVISION/ GROUP	F	Matt Nelson
			DIVISION/ GROUP	T/X	Dave Wilkins; Andrew Pattison (T)
			DIVISION/GROUP		
			<u>JUMBO</u>		
			DIVISION /GROUP	Jumbo	Unstaffed
6. AGENCY REPRESENTATIVES			b. BRANCH II- DIVISION/GROUPS		
AGENCY	NAME		DIVISION/GROUP		
NEZ PERCE CLEARWATER FOREST	AA: Cheryl Probert; Marty Mitzkus (T)		DIVISION/GROUP		
	AREP: Zoanne Anderson		DIVISION/GROUP		
	READ: Jeremy Harris; Stephen Hampton; Erin Grinde; Doug Olive		DIVISION/GROUP		
IDAHO COUNTY	Sheriff Brian Hewson		c. BRANCH III- DIVISIONS/GROUPS		
			BRANCH DIRECTOR		
7. PLANNING SECTION			DEPUTY		
CHIEF	Mark Glos; Jim Stiteler		DIVISION/GROUP		
SITUATION UNIT	Jason Willoughby (T)		DIVISION/GROUP		
RESOURCES UNIT	Patty Bates		DIVISION/GROUP		
DEMOB UNIT	Jode Boyles Briggs		d. AIR OPERATIONS BRANCH		
FIRE BEHAVIOR:	Andrew Myhra (T)		BRANCH DIRECTOR	Jeff Polack	
STRATEGIC OP PLANNER	Todd Opperman		AIR SUPPORT GROUP SUP		
LONG TERM ANALYST	Jon Rieck				
INCIDENT METEROLOGIST	Jimmy Taeger				
COMPUTER SPECIALIST					
GIS SPECIALIST	Joel Harrison; Eyler White (T)				
TRAINING SPECIALIST					
8. LOGISTICS SECTION			10. FINANCE/ADMINISTRATION SECTION		
CHIEF	Peter Pappas; Kimberly Burch (T)		CHIEF	Wendy McCartney	
DEPUTY			COST UNIT	Joyce Anderson; Jane Taylor (T)	
a. SUPPORT BRANCH			TIME UNIT	Marti Miller; Sherise Foster (T)	
SUPPLY UNIT	Dana Stone		EQUIPMENT TIME	Barbara Hogg	
ORDERING MANAGER	Tim Stroope (T)		PERSONNEL TIME	Debora Rendleman	
FACILITIES UNIT	Tom Dauenhauer		INCIDENT BUSINESS SPECIALIST	Julie Campbell; Chuck Tapia (T)	
GROUND SUPPORT UNIT	Kyler McCarrel				
BASE CAMP MANAGER					
b. SERVICE BRANCH					
MEDICAL UNIT	Connie Weeks; Rosemary Myers (T)				
FOOD UNIT	Allen Long				
COMMUNICATION UNIT	Todd Orr; Chris Gentili; Jim Olivarez				

PREPARED BY: Patty Bates



Fire Weather Forecast



FORECAST NO: 33
PREDICTION FOR: Tuesday
SHIFT DATES: Aug 10, 2021
FORECAST ISSUED: 1800 August 9, 2021

NAME OF FIRE: Dixie/Jumbo
UNIT: ID-NCF NR FMT Team 5
IMET: Jimmy Taeger (208) 577-1624

WEATHER DISCUSSION: A dry and warming trend will develop through the end of the week. Winds will be mostly from the northwest, with afternoon relative humidity around 20-25% and highs rising into the 90s to low 100s.

WEATHER FORECAST TODAY (TUESDAY):

	Dixie (5,600 ft)	Mallard Creek (5,400 ft)	Mariah RAWs (3,400 ft)
Max/Min Temp.	79F / 40F	77F / 42F	91F / 57F
Min/Max RH	21% / 70%	25% / 75%	18% / 55%
Day Winds (20 foot)	W winds 10 to 15 mph. Strongest winds between 1100-2000.	NW winds 10 to 15 mph. Strongest winds between 1100-2000.	NW winds 5 to 10 mph. Strongest winds between 1200-2000.
Night Winds (20 foot)	Becoming down drainage 2 to 4 mph after 2000.	Becoming down drainage 2 to 4 mph after 2000.	Downslope/downvalley winds 2-4 mph after 2000.
Notes	Be sure to drink plenty of water!	Be sure to drink plenty of water!	Be sure to drink plenty of water!

WEATHER: Patchy valley fog, becoming partly cloudy by mid-morning.

LAL: 1 CWR: 0% HAINES: 3

STABILITY / INVERSION: Moderate night time inversion below active fire area. Mixing by 1100.

SMOKE TRANSPORT WINDS: Northwest 5 to 10 mph in afternoon.

Sunset Tuesday: 1956

Sunrise Wednesday: 0536

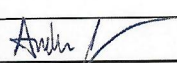
Sunset Wednesday: 1954

OUTLOOK FOR WEDNESDAY (Dixie 5,600 FT): Partly cloudy skies. Winds NW 5 to 10 mph with gusts to 15 mph in the afternoon. Max Temps 82 to 85F. Min RH: 25%. Max RH: 65%. LAL 1. CWR 0%. Haines 4.

THREE DAY EXTENDED (Dixie 5,600 FT)

	Max T	Min RH	Max RH	Ridge Winds	WX	LAL
THU	87	22%	70%	NNW 10 to 15 mph	None	1
FRI	90	19%	55%	WNW 10 to 15 mph	None	1
SAT	89	20%	52%	NW 10 to 15 mph	None	1

FIRE BEHAVIOR FORECAST

FORECAST NUMBER: 33	TYPE OF FIRE: Wildland Fire
FIRE NAME: Dixie/Jumbo	OPERATIONAL PERIOD: Tuesday, August 10th, 2021
DATE ISSUED: 8/9/21	TIME ISSUED: 1900
UNIT: USFS-ID-NCF	SIGNED: Andrew Myhra – FBAN(t) 

INPUTS

WEATHER SUMMARY: High pressure settles over the area to produce warming and drying through the week. Today: Highs – 80s to 90s; Low RH – 20-25%; CWR 0%; Partly cloudy.

OUTPUTS

FIRE BEHAVIOR

GENERAL:

- Potential fire behavior will continue to be moderated by fuel conditions through first part of the week.
 - 1000hr/100hr timelag fuels require additional drying before becoming readily available.
 - Good overnight humidity recoveries will continue to limit extended burn periods.
- Late in the week, forecast weather conditions could lead to rapidly drying dead fuels, accelerated curing of live fuels, and the potential for increased fire activity and growth.
 - Midweek RHs remain in the 20s for highlands, but dip into the teens in the River Canyon
 - Midweek temps could approach 90 or higher
- Light smoke observed on the fire interior and adjacent to unburned pockets of fuel and plantations.
- Fine dead fuel on exposed terrain is entering the burn period late morning to early afternoon.
- General winds were light yesterday, but some terrain funneling occurred late in the afternoon with the development of moderate diurnal winds.

SPECIFIC:

Division C: Minimal fire activity. Infrared analysis continues to show very slow growth near the crest of Mammoth Mountain.

Division F: Moist fuel conditions in the Comstock drainage continue to limit fire growth. Isolated heat remains on the north aspect of Blowout Ridge but is not actively spreading.


Division T/X: Very light smoke visible north of the 1190 Rd.

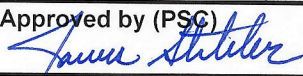
Active fire persists south of the burn scar in the Noble Creek drainage and NW of Mallard Creek campground. Watch for increased activity and wind surfacing on ridgetops, flats, and NW→SE aligned drainages.

Jumbo Fire: No activity along the fire perimeter.

AIR OPERATIONS: Sunset 1956. Sunrise Tuesday 0536. Moderate inversion mixing by 1100.


FIRE BEHAVIOR SAFETY: The Salmon River Canyon has been known to produce unexpected wind conditions, developing downslopes in the afternoon from the canyon break to the upper third of the canyon. As afternoon heating occurs, air can rise almost straight vertical from the center of the canyon. The rising hot air is replaced with cooler air from the upland plateaus. This can be counter-intuitive to common understanding of diurnal winds and may catch firefighters off-guard.

ASSIGNMENT LIST			1.Branch DIXIE		2. Division/Group DIV F		
3. Incident Name DIXIE / JUMBO			4. Operational Period: DAY Date: August 10, 2021 Time: 0600-2000				
5. Operations Personnel							
Operations Chief	Ashley Sites; Kevin Smith		Division/Group Supervisor		Matt Nelson		
Branch Director			Air Operations Director Air Attack Supervisor		Jeff Polack		
6. Resources Assigned This Period							
Strike Team/Task Force/ Resource Designator	Last Shift	Leader	No. Pers.	EMT	Trans. Needed	Drop Off PT./Time	Pick Up PT./Time
E-1 HETF Elk Ridge Ranch	8/13	Scott Anderson	8		N	ICP/0600	ICP/2000
E-123 ENG4 Great Basin	8/13	David Grass	3		N	ICP/0600	ICP/2000
E-87 ENG6 DB Jet Engine	8/22	Greg Racicot	3		N	ICP/0600	ICP/2000
E-174 ENG6 BLM Engine 5646	8/11	Truett Anderson	4	X	N	ICP/0600	ICP/2000
E-175 ENG6 Oklahoma	8/12	Clayton Hurst	2		N	ICP/0600	ICP/2000
E-176 ENG6 Verde Valley	8/16	Tucker Ihrman	3	X	N	ICP/0600	ICP/2000
E-15 WTS2 Lance LLC	8/15	John Hale	1		N	ICP/0600	ICP/2000
E-101 WTS2 Big Cedar	8/19	Darryl Baker	1		N	ICP/0600	ICP/2000
E-132 WTS2 Moranville Trucking	8/13	Mark Lock	1		N	ICP/0600	ICP/2000
E-99 SKG2 Skidgeon	8/12	Jaylund Rammell	2		N	ICP/0600	ICP/2000
E-18 Log Loader Cox	8/22	Rick Cox	2		N	ICP/0600	ICP/2000
E-200 Log Truck Cox	8/22	Stewart Wilson	1		N	ICP/0600	ICP/2000
E-201 Log Truck Cox	8/22	Darrel Cox	1		N	ICP/0600	ICP/2000
E-202 Log Loader Craig Mountain	8/23	Curtis Click	1		N	ICP/0600	ICP/2000
E-199 Cook & Sons Brusher	8/20	Todd Garmen	1		N	ICP/0600	ICP/2000
E-204 CHP3 Chipper	8/24	Dan Julian	1		N	ICP/1000	ICP/2000
O-224 HEQB Tom Franklin	8/14		1		N	ICP/0600	ICP/2000
O-294 HEQB Matt Batton (T)	8/12		1		N	ICP/0600	ICP/2000
O-287.8 SOF2 (T) Lee Hahnkamp	8/14		1		N	ICP/0600	ICP/2000
O-379 EMPF Jeff Childers	8/22		1	X	N	DP1	DP1
7. Control Operations							
<p>Task: Maintain structure protection equipment at Dixie and Comstock. Chip the Dixie Stage Road. Remove logs and stage at Dixie Summit. Begin suppression repair. Monitor interior smokes. Mow the Dixie Road.</p> <p>Purpose: Protect values at risk (Dixie, Black Diamond and Comstock). Maintain ingress/egress. Mitigate impacts from suppression actions.</p> <p>End State: Access is maintained to the Dixie/Comstock area and values at risk are protected.</p>							
8. Special Instructions:							
<p>Identify resources for initial attack.</p> <p>Backhaul equipment and supply</p>							
9. Division/Group Communication Summary							
Function	Frequency - RX	Frequency - TX	Tone		Channel	Comments	
Command 7	170.0125	165.2500	110.9		7	Repeater assignments are suggestions. If another repeater works better, use it.	
Tactical	168.6000	168.6000	110.9		3		
Air to Ground CMD	168.4000	168.4000			13		
Prepared by (RESL) Patty Bates		Approved by (PSC) 			Date August 9, 2021		Time 2100

ASSIGNMENT LIST				1.Branch Dixie		2. Division/Group DIV T/X	
3. Incident Name <div style="text-align: center;">DIXIE / JUMBO</div>				4. Operational Period: DAY Date: August 10, 2021 Time: 0600-2000			
5. Operations Personnel							
Operations Chief		Ashley Sites; Kevin Smith		Division/Group Supervisor		Dave Wilkins; Drew Pattison (T)	
Branch Director				Air Operations Director Air Attack Supervisor		Jeff Polack	
6. Resources Assigned This Period							
Strike Team/Task Force/ Resource Designator	Last Shift	Leader	No. Pers.	EMT	Trans. Needed	Drop Off PT./Time	Pick Up PT./Time
O-192 WFM Pilot Peak	8/12	Travis Clark	10	X	N	ICP/0600	ICP/2000
O-397 WFM Saguaro	8/23	Kress Sanders	10		N	ICP/0600	ICP/2000
O-404 WFM1 Teton	8/24	Eric Hawes	10	X	N	ICP/0600	ICP/2000
C-33 HC2 R & R Contracting	8/10	Chris Rocha	20		N	ICP/0600	ICP/2000
C-34 HC2 Wy'East Wildland	8/11	Andrew Williamson	20		N	ICP/0600	ICP/2000
E-4 ENG6 Metal Works	8/14	Isaach Cordova	3		N	ICP/0600	ICP/2000
E-85 ENG6 Cougar	8/16	Cathy Reilly	3		N	ICP/0600	ICP/2000
E-149 ENG6 Griffith	8/22	William Griffith	3		N	ICP/0600	ICP/2000
E-177 ENG6 Curtis Engine	8/15	Charles Curtis	3		N	ICP/0600	ICP/2000
E-178 ENG6 BLM Engine 2620	8/11	Rick Fisher	3		N	ICP/0600	ICP/2000
E-14 WTS2 Smith		Spencer Gardner	1		N	ICP/0600	ICP/2000
E-16 WTS2 Flash EX	8/18	Jesi Eckel	1		N	ICP/0600	ICP/2000
E-104 HETF Aaron Downing Logging	8/14	Aaron Downing	10		N	ICP/0600	ICP/2000
E-130 HETF Bonnalie Logging	8/14	Nita Lorentz	12		N	ICP/0600	ICP/2000
E-102 Log Loader Anderson	8/20	Alex Mattson; Scott Schucher	2		N	ICP/0600	ICP/2000
E-97 MAST Downing Logging	8/28	Wes Renne	2		N	ICP/0600	ICP/2000
E-108 DOZ3 Flash Excavation	8/19	Christensen Graycen	1		N	ICP/0600	ICP/2000
E-127 DOZ3 McColloch	8/19	Mark McColloch	1		N	ICP/0600	ICP/2000
E-163 MAST Bonnalie Logging	8/16	Eric Mader	2		N	ICP/0600	ICP/2000
O-295 HEQB Max Woehle (T)	8/11		1		N	ICP/0600	ICP/2000
O-293 HEQB Ryan Recktenwald (T)	8/12		1		N	ICP/0600	ICP/2000
O-298 HEQB Karl Honkonen (T)	8/13		1		N	ICP/0600	ICP/2000
O-188 FAL A & F Fallers	8/24	Tim Jenkins; Fausto Rivera	2		N	ICP/0600	ICP/2000
O-288 FAL Brothers Fire	8/10	Dave Hiatt	1		N	ICP/0600	ICP/2000
O-289 FAL Brothers Fire	8/10	Mike Worley	1		N	ICP/0600	ICP/2000
O-287.8 SOF2 Lee Hahnkamp (T)	8/14		1		N	ICP/0600	ICP/2000
O-371 EMPF Chris Jacks	8/22		1	X	N	ICP/0600	ICP/2000
O-333 SOFR Willie Cirone	8/17		1		N	ICP/0600	ICP/2000
E-128 Ambo 1 Wilderness Ambulance	8/10	Alex Helm; Eric Siedband	2		N	DP7	DP7
7. Control Operations							
Task: Line and mop up spots within the "crab claw". Finish line construction east and west from Jack Mountain. Maintain hose lays and sprinklers into lower Mallard Creek. Haul logs. Begin suppression repair; waterbar secondary lines. Purpose: Keep fire from crossing Red River drainage and point protect values at risk. End State: Slop over/spot fires are contained and the main fire is held to the south of Dixie Road. Access along Jack Mountain Road and Forest Road 421 to Whitewater Ranch remains open.							
8. Special Instructions:							
Backhaul equipment and supplies.							
9. Division/Group Communication Summary							
Function	Frequency - RX	Frequency - TX	Tone		Channel	Comments Repeater assignments are suggestions. If another repeater works better, use it.	
Command 9	169.8125	164.6750	110.9		9		
Tactical	168.2000	168.2000	110.9		2		
Air to Ground CMD	168.4000	168.4000			13		
Prepared by (RESL) Patty Bates		Approved by (PSC) 			Date August 9, 2021		Time 2100

Prepared Time: 2000

9. HELICOPTERS													
CALL SIGN / FAA N#	TY	MAKE/MODEL	BASE	Start	Avail	REMARKS	CALL SIGN / FAA N#	TY	MAKE/MODEL	BASE	Start	Avail	REMARKS
303AJ	1	CH-47D	Tolo	0900	0930	Buckets	3181F	2	UH-1F	GIC	0800	0830	Buckets, external cargo *Forest prepo resource*
205PT	2	B-205+	Mullins	0800	0830	Buckets, Cargo, PAX							

INCIDENT RADIO COMMUNICATIONS PLAN I-205				1. INCIDENT NAME		2. DATE/TIME PREPARED		3. OPERATIONAL PERIOD DATE/TIME			
				Dixie/Jumbo Fire		8/9/2021		8/10/2021 0600 to 2000			
4. BASIC RADIO CHANNEL UTILIZATION											
Ch #	Function	Channel Name	Assignment	RX Freq	N/W	RX Tone/NAC	TX Freq	N/W	TX Tone/NAC	Mode Analog (A) Digital (D) Mixed (M)	Remarks
1	TACTICAL	TAC 1		168.0500	N		168.0500	N		A	
2	TACTICAL	TAC 2	DIV T/X	168.2000	N	110.9	168.2000	N	110.9	A	DIVISION TANGO, DIVISION XRAY
3	TACTICAL	TAC 3	DIV F	168.6000	N	110.9	168.6000	N	110.9	A	DIVISION FOXTROT
4	TACTICAL	TAC 4		168.2500	N	110.9	168.2500	N	110.9	A	
5	TACTICAL	TAC 5	DIV C	166.7250	N	110.9	166.7250	N	110.9	A	DIVISION CHARLIE
6	TACTICAL	TAC 6		166.7750	N	110.9	166.7750	N	110.9	A	
7	COMMAND	CMD 7	DIV F/V	170.0125	N	110.9	165.2500	N	110.9	A	OREGON BUTTE LOOKOUT
8	COMMAND	CMD 8			N			N		A	
9	COMMAND	CMD 9	DIV T/X	169.8125	N	110.9	164.6750	N	110.9	A	BOSTON MOUNTAIN
10	COMMAND	CMD 10	DIV C	171.8875	N	110.9	162.1875	N	110.9	A	SHEEPEATER LOOKOUT
11	COMMAND	CMD 11	DIV F	171.4125	N	110.9	164.6000	N	110.9	A	MOOSE BUTTE
12	LOCAL FS NET	OREBUTTE	ALL DIV	173.1375	N	0.0	166.2000	N	127.3	A	NEZ EAST REPEATER
13	AIR TO GROUND	A/G CMD	ALL DIV	168.4000	N	0.0	168.4000	N	0.0	A	A/G COMMAND
14											
15	AIR AMBULANCE	EMS 2	EMERGENCY	155.2800	N	0.0	155.2800	N	0.0	A	STATE COMM/AIR AMBULANCE
16	AIR GUARD	AIRGUARD	EMERGENCY	168.6250	N	0.0	168.6250	N	110.9	A	EMERGENCY USE ONLY
5. Special Instructions:											
6. I-205 Prepared By: Communications Unit Leader				Name:				TODD ORR (COMIL)			Signature: 



Safety Message

Major Hazards and Risks: Woodchipper Operations and Heat Related Injury

Woodchipper Operations:

- Unfamiliar with proper operating techniques
- Kickback, jamming of the machine
- Motor Vehicle Accident
- Machine Breakdown
- Fire or Explosion
- Possibility of getting pulled into the chipper
- Wear appropriate PPE and avoid loose clothing
- Always pay attention to the operator

Heat Related Injury:

- Onset of symptoms can be very sudden!
- Profuse sweating w/warm or cool clammy skin leading to hot dry skin
- Muscle cramps and weakness
- Dizziness, headache, and irritability
- Rapid, weak pulse
- Vomiting
- Mental status change
- Loss of consciousness
- **IF HRI is suspected:** Cool the body as quickly as possible, then treat other conditions.

IRPG page 109-110

Be Mindful About Safety in all Your Actions
Northern Rockies Team 5

DIXIE/JUMBO FIRE

Incident within an Incident Emergency Action Plan

In the case of a serious accident requiring patient transport to a medical facility:

- The closest ranking Operations Leader (i.e., Division Supervisor) at the accident scene will take charge and be the Point of Contact (POC).
- Use the 8-line protocol to assess patient; if patient evaluation is either red or yellow use **Dixie Fire Command Frequency Identified for the Division the IWI is occurring on**. Air extraction resources will use Air to Ground tactical or Air Ambulance EMS2.
- If incident should occur outside the Dixie/Jumbo Fires contact 911 and Dixie Communications on Command frequency for monitoring and support and to notify whether patient is incident personnel or civilian.
- Patients evaluated as Green notify nearest supervisor of the location of the incident and assigned EMT to determine treatment and transport to Medical Unit.
- Upon notification of a serious accident, the Following will report to the ICP Communications trailer: Incident Commander, Safety Officer, Operations Section Chief (Planning OPS), and Medical Unit Leader to monitor IWI. Safety Officer will notify Finance and/or Comp Claims of the IWI.
- Incident radio traffic will be monitored from 0500 to 2200 every day on Command at ICP.

Approved by: /s/ Joe Sampson

Incident Commander

Date: 08/01/2021

1. Incident/Project Name		2. Operational Period: August 10, 2021 0600-2000						
Dixie/Jumbo Fires		Date/Time 08/09/21 1500						
3. Ambulance Services								
Ambulance	Complete Address			Phone & EMS Frequency		Advanced Life Support (ALS) Yes No		
Elk City Ambulance	Elk City, Idaho			911 155.280			X	
Wilderness Medics	Red River Base Camp			Command		X		
4. Air Ambulance Services								
Name	Phone		Type of Aircraft & Capability					
Life Flight Network	911 155.340 tan		Paramedics/Flight Nurse/Night vision					
2 Bear Air	911 155.340 tan		Hoist/Paramedics					
5. Hospitals								
Name Complete Address	GPS Datum – WGS 84 Coordinate Standard Degrees Decimal Minutes DD° MM.MMM' N - Lat DD° MM.MMM' W - Long		Travel Time Air Gnd		Phone		Helipad Yes No	Level of Care Facility
Syringa General Hospital 607 W. Main Grangeville, ID 83530	Lat:		30 Min	2 Hrs	208-983-5919 ER	<input type="checkbox"/>	<input checked="" type="checkbox"/>	Critical Access Land at Airport
	Long							
	VHF:	155.280 white						
St. Luke's Medical Center McCall, Idaho	Lat:	N 44 53.22	45 Min		208-634-2221		X	Critical Access Land at Airport
	Long	W 116 06.5						
	VHF:	155.280 white						
St. Joseph's Regional Medical Center 415 6 th St. Lewiston, Idaho 83501	Lat:	N 46 25.02	45 Min	3 Hrs	208-799-5799 ER	X		Level 3 Roof Top Pad Level 2 Ground Level Pad
	Long	W 117 01.45						
	VHF:	155.280 white						
Community Medical Center 2827 Ft. Missoula Rd., Missoula, MT	Lat:	N 46 50.909	70 Min		406-327-4171 ER	X		
	Long	W 114 02.866						
	VHF:	155.280 white						
6.								
Division Branch Group								
All Divisions:	Crew Supplies:		Crew EMTs:					
DIV C	N/A		Unstaffed with Medical Unit EMTs					
DIV F DP 7	ALS Ambulance		Best Practice Medicine (Ambo 2) DP 7					
DIV F DP1	ALS pack, TRS, KED, AED		Jeff Childers - EMPF					
DIV T	ALS Ambulance		Best Practice Medicine (Ambo 2) DP 7					
DIXIE	ALS Ambulance		Wilderness Medics (Ambo 1)					
MALLARD CREEK	ALS pack, TRS, KED, AED		Chris Jacks - EMPF					
Prepared by: Connie Weeks	MEDL		Approved by: Dave Smith					

YOUR DIXIE FINANCE IS HERE FOR YOU!

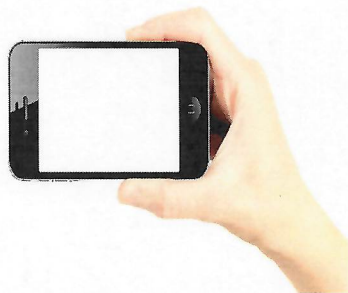
Need to submit your approved CTR or shift ticket?

How about your resource order?

AD hiring paperwork?

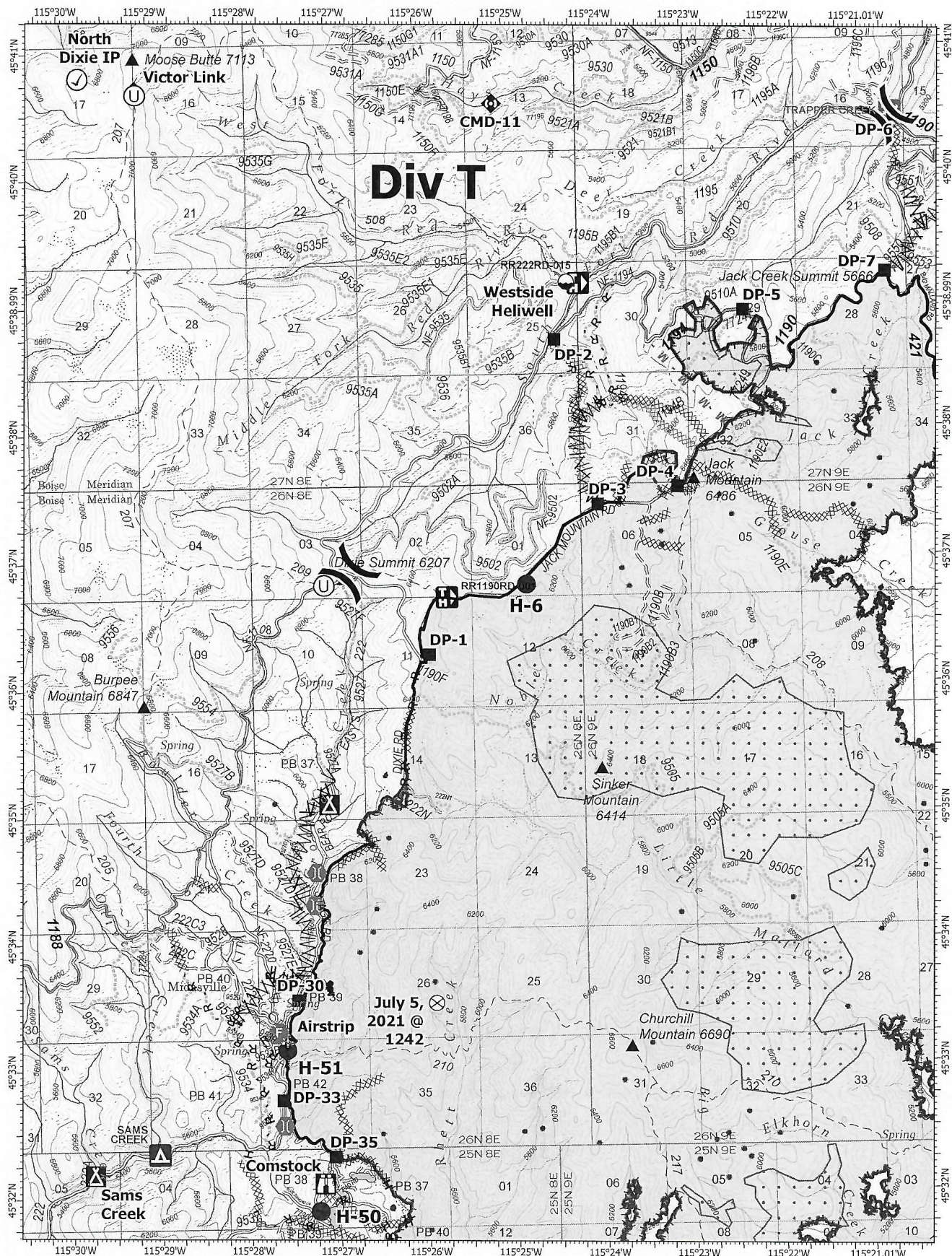
IT'S EASY TO DO!

**Use your cell phone to take a picture of the
document you need to send**



And email it to:

2021.dixie.finance@firenet.gov



IAP Map

Dixie
ID-NCF-000448
08/10/2021

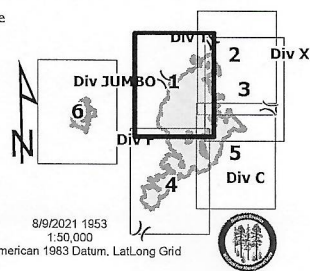
43,213 acres at 08/08/2021 20:21 PDT
Acres from IR and GPS

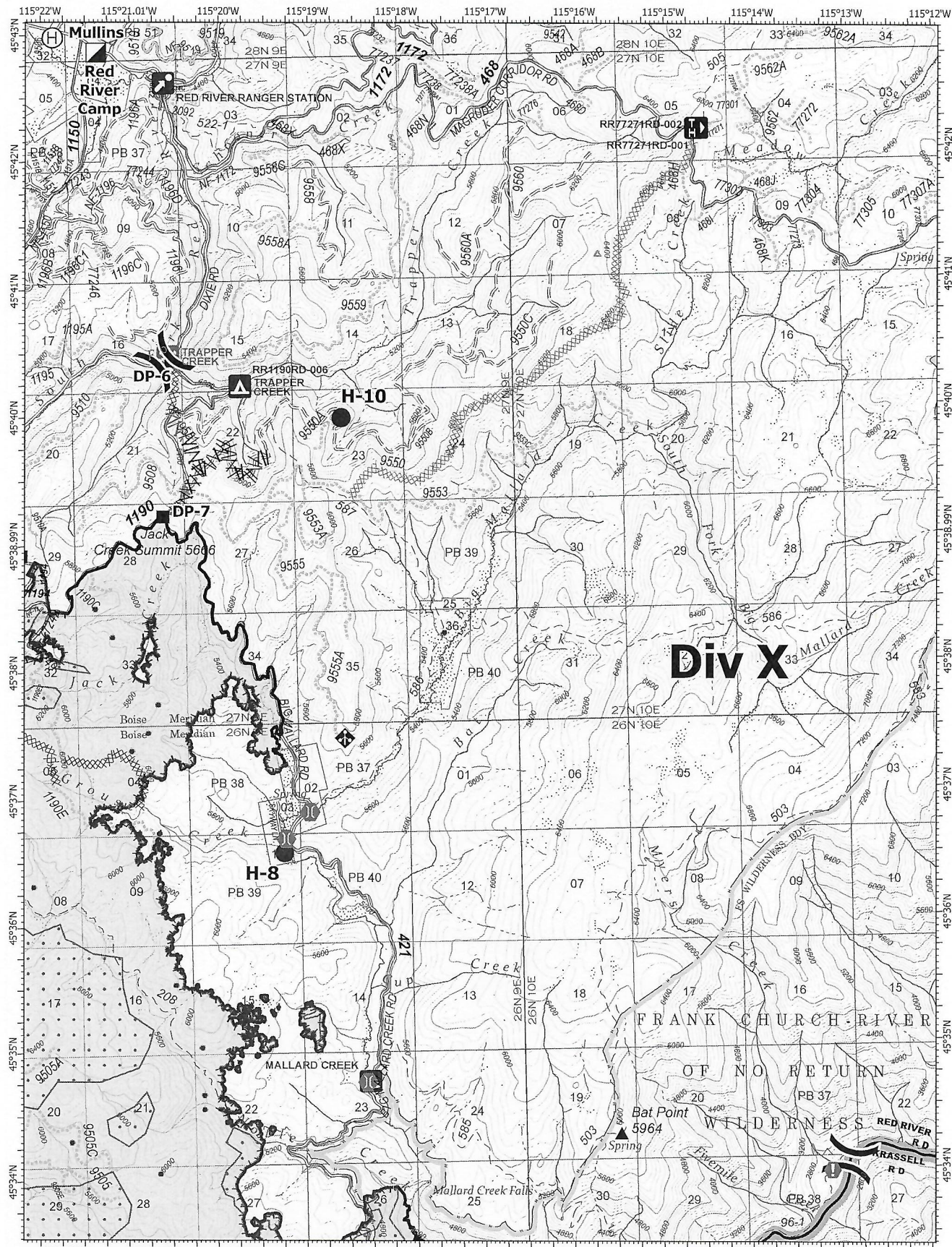
0 0.5 1
Miles

- Check Point
- Dip Site
- HeliSpot
- Unimproved Landing Area
- ⌵ Division Break
- Drop Point
- Camp
- Lookout
- ⊗ Fire Origin
- Fire Station

- Bridge
- Mobile Weather Unit
- Repeater
- Wildfire Daily Fire Perimeter
- Completed Dozer Line
- Completed Fuel Break
- Completed Hand Line
- Completed Road as Line
- Planned Dozer Line
- Planned Fuel Break

- M Planned Mixed Construction Line
- R Planned Road as Line
- Access or Improved Road
- Other
- Fire Edge
- Contained Line
- IR Isolated Heat Source
- IR Heat Perimeter
- IR Scattered Heat





IAP Map

Dixie
ID-NCF-000448
08/10/2021

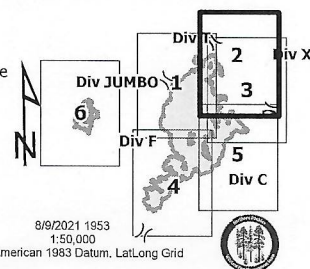
43,213 acres at 08/08/2021 20:21 PDT
Acres from IR and GPS

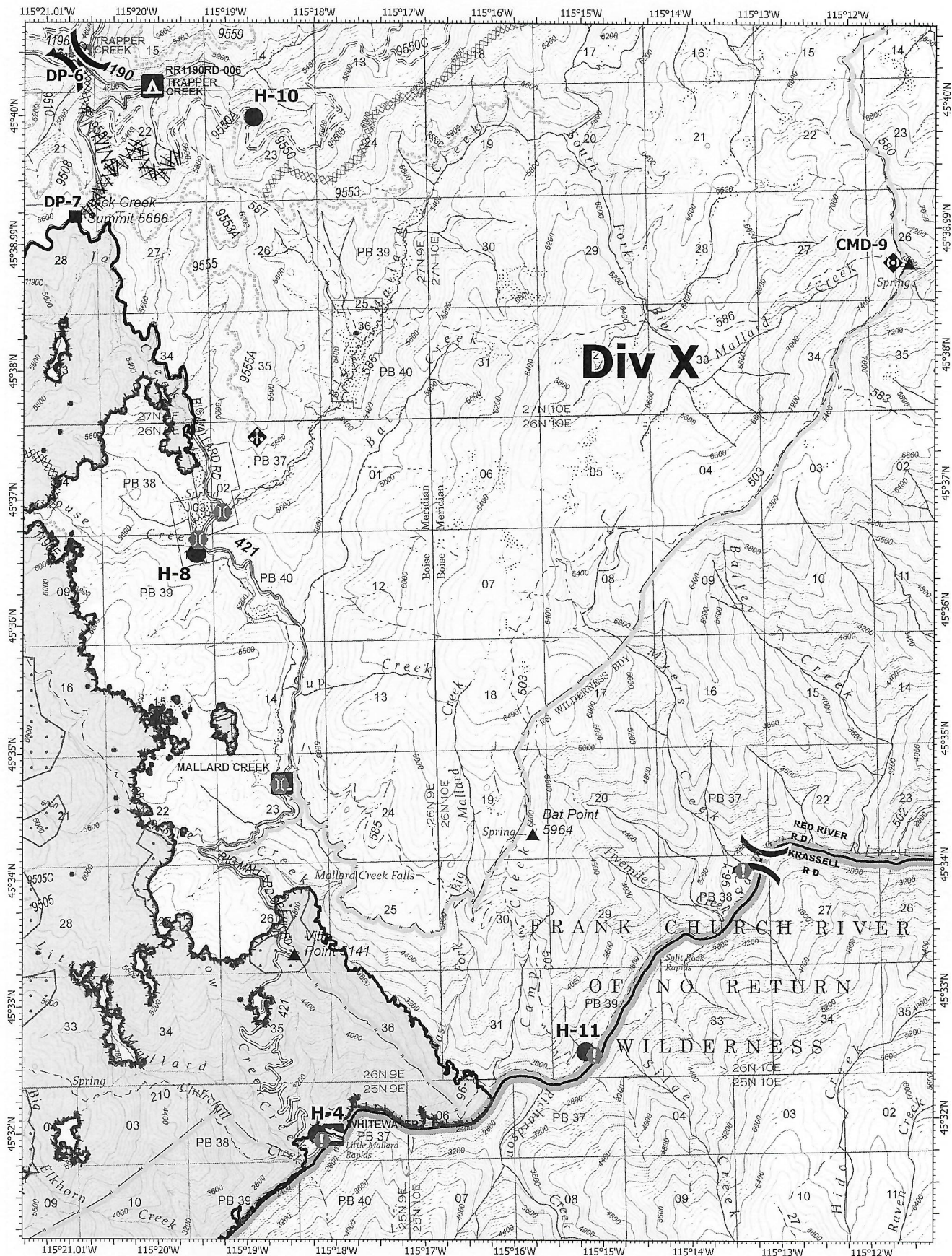
0 0.5 1
Miles

- Helispot
- ⊕ Helibase
-) (Division Break
- ▣ Incident Command Post
- ▣ Drop Point
- ⬇ Value at Risk
- ⬆ Bridge

- ⬆ Mobile Weather Unit
- ▣ Wildfire Daily Fire Perimeter
- ⌘ Completed Dozer Line
- ⌘ Completed Fuel Break
- ⌘ Planned Dozer Line
- ⌘ Planned Fuel Break
- ⌘ Planned Road as Line

- ▬ Fire Edge
- ▬ Contained Line
- IR Isolated Heat Source
- ▣ IR Heat Perimeter
- ▣ IR Intense Heat
- IR Scattered Heat

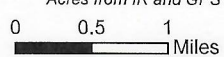




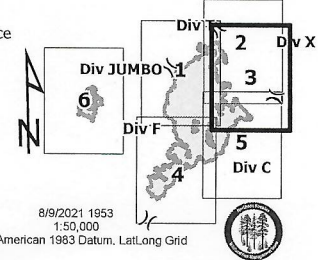
IAP Map

Dixie
ID-NCF-000448
08/10/2021

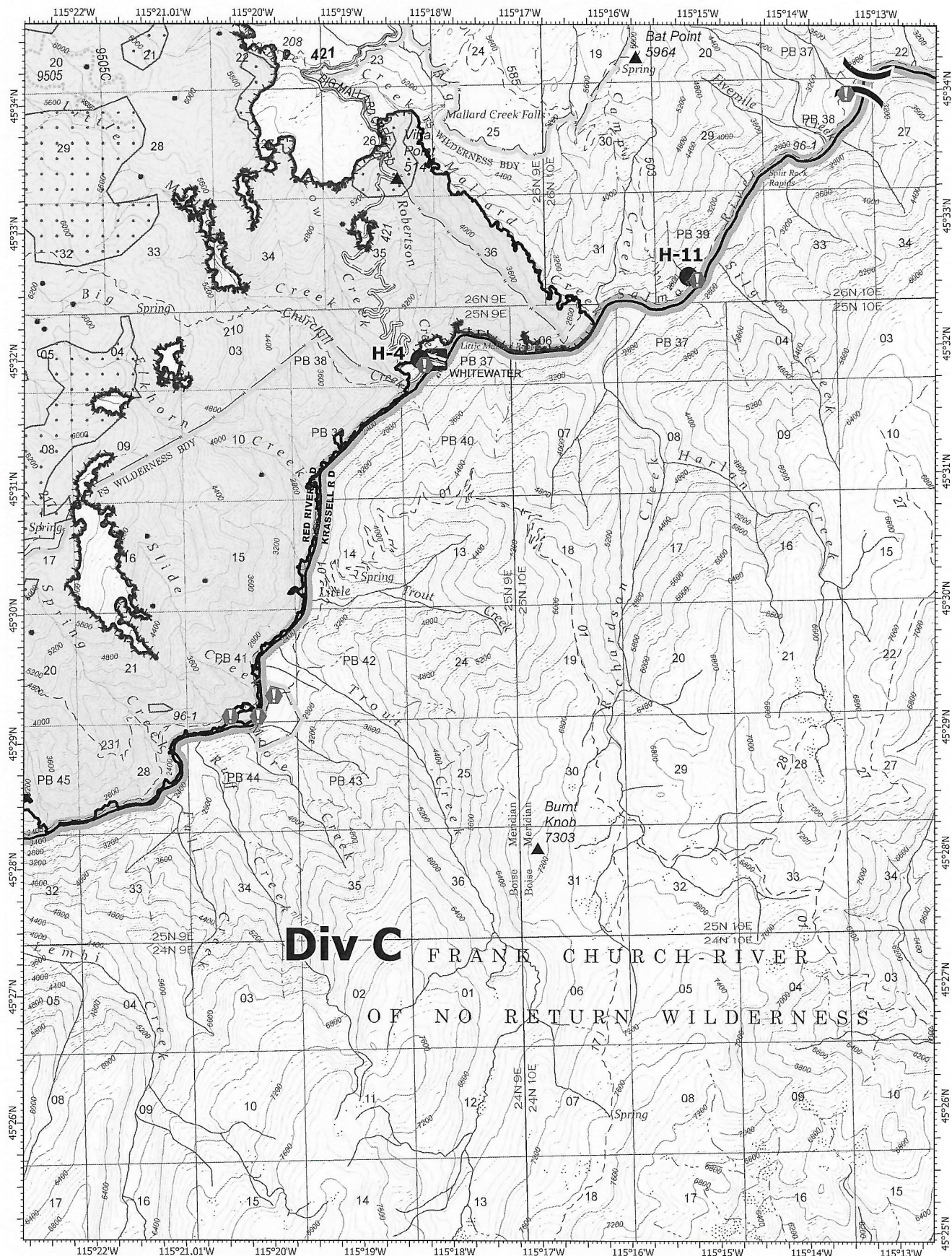
43,213 acres as of 08/08/2021 20:21 PDT
Acres from IR and GPS



- Hellspot
-)(Division Break
- Drop Point
- ⬢ Value at Risk
- ⌵ Bridge
- ⚡ Mobile Weather Unit
- ⬢ Repeater
- ▭ Wildfire Daily Fire Perimeter
- ▨ Completed Dozer Line
- ▨ Completed Fuel Break
- ▨ Planned Dozer Line
- ▨ Planned Fuel Break
- Planned Road as Line
- ▬ Fire Edge
- IR Isolated Heat Source
- ▭ IR Heat Perimeter
- ▨ IR Intense Heat
- ▨ IR Scattered Heat



8/9/2021 1553
1:50,000
North American 1983 Datum, Lat,Long Grid



Div C FRANK CHURCH-RIVER OF NO RETURN WILDERNESS

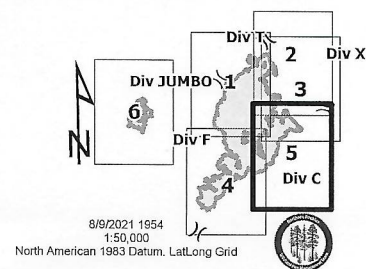
IAP Map

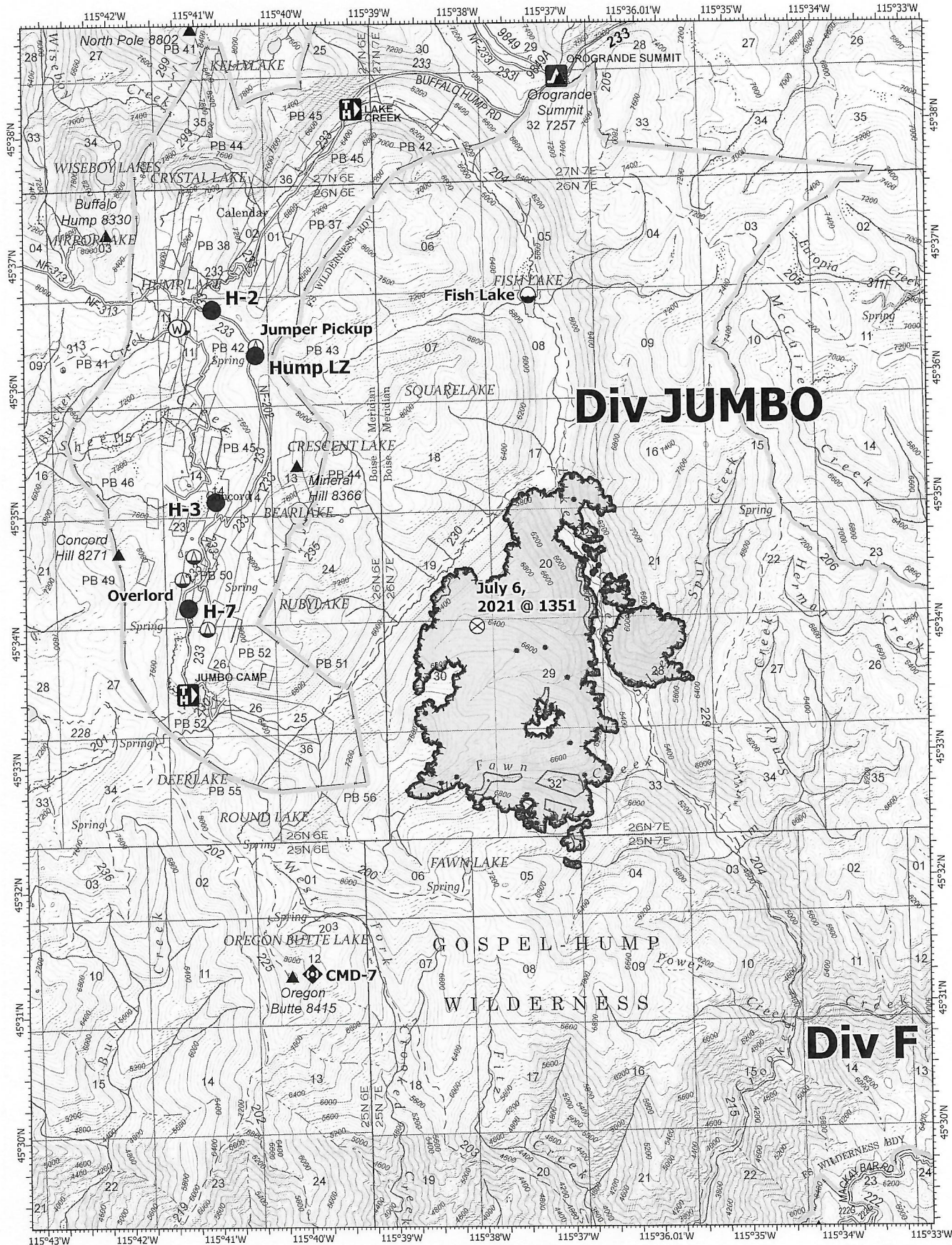
Dixie
ID-NCF-000448
08/10/2021

43,213 acres at 08/08/2021 20:21 PDT
Acres from IR and GPS

0 0.5 1
Miles

- Helispot
-) (Division Break
- ⚠ Value at Risk
- ⛖ Bridge
- ▭ Wildfire Daily Fire Perimeter
- ▭ Fire Edge
- ▬ Contained Line
- IR Isolated Heat Source
- ▭ IR Heat Perimeter
- ▭ IR Intense Heat
- ▭ IR Scattered Heat





IAP Map

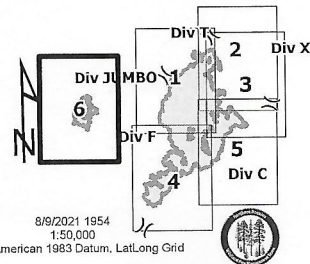
Jumbo
ID-NCF-000463
08/10/2021

2,680 acres at 08/08/2021 20:21 PDT
Acres from IR and GPS

0 0.5 1
Miles

- Dip Site
- Helispot
- ⊙ Sling Site
- ⊗ Fire Origin
- ⬢ Repeater
- ⊙ Water Source

- ▭ Wildfire Daily Fire Perimeter
- ▬ Fire Edge
- IR Isolated Heat Source
- ▭ IR Heat Perimeter
- ▭ IR Scattered Heat



8/9/2021 1954
1:50,000
North American 1983 Datum, Lat/Long Grid

Medical Incident Report – 8 Line

FOR A NON-EMERGENCY INCIDENT, WORK THROUGH CHAIN OF COMMAND TO REPORT AND TRANSPORT INJURED PERSONNEL AS NECESSARY.

FOR A MEDICAL EMERGENCY: IDENTIFY ON SCENE INCIDENT COMMANDER BY NAME AND POSITION AND ANNOUNCE **"MEDICAL EMERGENCY"** TO INITIATE RESPONSE FROM IMT COMMUNICATIONS/DISPATCH.

Use the following items to communicate situation to communications/dispatch.

1. CONTACT COMMUNICATIONS / DISPATCH (Verify correct frequency prior to starting report)

Ex: "Communications, Div. Alpha. Stand-by for Emergency Traffic."

2. INCIDENT STATUS: Provide incident summary (including number of patients) and command structure.

Ex: "Communications, I have a Red priority patient, unconscious, struck by a falling tree. Requesting air ambulance to Forest Road 1 at (Lat./Long.) This will be the Trout Meadow Medical, IC is TFLD Jones. EMT Smith is providing medical care."

Severity of Emergency / Transport Priority	<input type="checkbox"/> RED / PRIORITY 1 Life or limb threatening injury or illness. Evacuation need is IMMEDIATE <i>Ex: Unconscious, difficulty breathing, bleeding severely, 2° – 3° burns more than 4 palm sizes, heat stroke, disoriented.</i> <input type="checkbox"/> YELLOW / PRIORITY 2 Serious Injury or illness. Evacuation may be DELAYED if necessary. <i>Ex: Significant trauma, unable to walk, 2° – 3° burns not more than 1-3 palm sizes.</i> <input type="checkbox"/> GREEN / PRIORITY 3 Minor Injury or illness. Non-Emergency transport <i>Ex: Sprains, strains, minor heat-related illness.</i>	
Nature of Injury or Illness & Mechanism of Injury		Brief Summary of Injury or Illness (Ex: Unconscious, Struck by Falling Tree)
Transport Request		Air Ambulance / Short Haul/Hoist Ground Ambulance / Other
Patient Location		Descriptive Location & Lat. / Long. (WGS84)
Incident Name		Geographic Name + "Medical" (Ex: Trout Meadow Medical)
On-Scene Incident Commander		Name of on-scene IC of Incident within an Incident (Ex: TFLD Jones)
Patient Care		Name of Care Provider (Ex: EMT Smith)

3. INITIAL PATIENT ASSESSMENT: Complete this section for each patient as applicable (start with the most severe patient)

Patient Assessment:

See IRPG page 106

Treatment:

4. TRANSPORT PLAN:

Evacuation Location (if different): (Descriptive Location (drop point, intersection, etc.) or Lat. / Long.) Patient's ETA to Evacuation Location:

Helispot / Extraction Site Size and Hazards:

5. ADDITIONAL RESOURCES / EQUIPMENT NEEDS:

Example: Paramedic/EMT, Crews, Immobilization Devices, AED, Oxygen, Trauma Bag, IV/Fluid(s), Splints, Rope rescue, Wheeled litter, HAZMAT, Extrication

6. COMMUNICATIONS: Identify State Air/Ground EMS Frequencies and Hospital Contacts as applicable

Function	Channel Name/Number	Receive (RX)	Tone/NAC *	Transmit (TX)	Tone/NAC *
COMMAND					
AIR-TO-GRND					
TACTICAL					

7. CONTINGENCY: Considerations: If primary options fail, what actions can be implemented in conjunction with primary evacuation method? Be thinking ahead.

8. ADDITIONAL INFORMATION: Updates/Changes, etc.