

# Dixie Fire

## Jumbo Fire

ID-NCF-000448

P1N402 (0117)




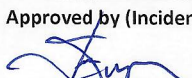
## INCIDENT ACTION PLAN

Thursday August 12, 2021



For IAP, Maps, Check-in and Demob



<b>INCIDENT OBJECTIVES</b>	1. Incident Name <b>DIXIE / JUMBO</b>		2. Date Prepared August 11, 2021		3. Time 2100
4. Operational Period: <b>August 12, 2021 DAY OPERATIONS 0600 - 2000</b>					
<b>Incident Objectives</b> <ol style="list-style-type: none"> <li>1. The Dixie and Jumbo fires will be managed using a variety of suppression strategies based on firefighter safety, availability of firefighting resource and threats to values at risk.</li> <li>2. Maintain access for firefighting resources and public egress within the Dixie and Jumbo fires' planning area.</li> <li>3. Execute strategies and tactics to reduce fire impacts to primary private and commercial structures, where possible.</li> <li>4. Consider efforts to moderate fire behavior to reduce probability of disrupting primary distribution lines to affected communities and communication sites associated with emergency response.</li> <li>5. Reduce negative impacts of fire management actions on cultural and natural features in the area, where safety and efficacy of suppression actions do not conflict with this objective. Order of priority: Nationally significant cultural resources, critical anadromous fish habitat and other sensitive watershed conditions identified by Agency Administrators.</li> </ol> <b>Incident Requirements</b> <ol style="list-style-type: none"> <li>1. Utilize risk-informed decision making to reduce fire fighter exposure to hazards while providing for public safety.</li> <li>2. Utilize pre-existing plans for community protection opportunities in North Star, Black Diamond, Comstock, Dixie, Mallard Ranch, Red River, Concord, Humptown, Frogtown, Fivemile Bar, Mackay Bar, and Copenhaver Ranch.</li> <li>3. Obtain approval for use of mechanized equipment in the Gospel Hump and Frank Church – River of No Return Wilderness areas.</li> <li>4. Document the quantity and placement of long-term retardant. Minimize the use of long-term retardant in designated wilderness areas, except to protect human life or to achieve point protection objectives.</li> <li>5. Any mechanical equipment operations within Inventoried Roadless Areas need prior approval from Agency Administrator.</li> <li>6. Provide current and accurate information to the media, public, and local office holders as to the status of fires within the complex.</li> <li>7. Provide for rehabilitation of areas impacted by incident operations in coordination with jurisdictional agency's resource advisor(s).</li> </ol>					
6. Weather Forecast for Period: <i>See attached Fire Weather Forecast</i>					
7. General Safety Message: <i>See attached Safety Message</i>					
8. <b>Attachments (mark if attached)</b>					
<input checked="" type="checkbox"/>	ICS 203 Organization List	<input checked="" type="checkbox"/>	ICS 205 Communication Plan	<input checked="" type="checkbox"/>	Finance message
<input checked="" type="checkbox"/>	Fire Weather Forecast	<input checked="" type="checkbox"/>	Safety Message	<input checked="" type="checkbox"/>	ICS 214 Activity Log
<input checked="" type="checkbox"/>	Fire Behavior Forecast	<input checked="" type="checkbox"/>	Incident within an Incident	<input checked="" type="checkbox"/>	Incident Maps
<input checked="" type="checkbox"/>	ICS 204 Division Assignment Lists	<input checked="" type="checkbox"/>	ICS 206WF Medical Plan	<input checked="" type="checkbox"/>	Medical Emergency Action Plan
<input checked="" type="checkbox"/>	ICS 220 Air Operations Summary				
9. Prepared by (Planning Section Chief) 			9. Approved by (Incident Commander) 		

ORGANIZATION ASSIGNMENT LIST		1. INCIDENT NAME	2. DATE PREPARED	3. TIME PREPARED
		DIXIE / JUMBO	8/11/21	2100
4. OPERATIONAL PERIOD: August 12, 2021 0600-2000				
5. INCIDENT COMMAND AND STAFF		9. OPERATIONS SECTION		
INCIDENT COMMANDER	Joe Sampson	PLANNING OPS:	Ashley Sites	
INFORMATION OFFICER	Terina Goicoechea; Erik Broeder (T)	LINE OPS:	Kevin Smith	
LIAISON OFFICER				
SAFETY OFFICER:	David Smith; Lee Hahnkamp (T); Leroy Holguin (T)			
6. AGENCY REPRESENTATIVES				
AGENCY	NAME			
NEZ PERCE	AA: Cheryl Probert; Marty Mitzkus (T)			
CLEARWATER FOREST	AREP: Zoanne Anderson			
	READ: Jeremy Harris; Stephen Hampton; Erin Grinde; Doug Olive			
IDAHO COUNTY	Sheriff Brian Hewson			
7. PLANNING SECTION				
CHIEF	Mark Glos; Jim Stiteler			
SITUATION UNIT	Jason Willoughby (T)			
RESOURCES UNIT	Patty Bates			
DEMOB UNIT	Jode Boyles Briggs			
FIRE BEHAVIOR:	Andrew Myhra (T)			
STRATEGIC OP PLANNER				
LONG TERM ANALYST				
INCIDENT METEROLOGIST				
COMPUTER SPECIALIST				
GIS SPECIALIST	Joel Harrison; Eyler White (T)			
TRAINING SPECIALIST				
8. LOGISTICS SECTION				
CHIEF	Peter Pappas; Kimberly Burch (T)			
DEPUTY				
a. SUPPORT BRANCH				
SUPPLY UNIT	Dana Stone			
ORDERING MANAGER	Tim Stroope (T)			
FACILITIES UNIT	Tom Dauenhauer			
GROUND SUPPORT UNIT	Kyler McCarrel			
BASE CAMP MANAGER				
b. SERVICE BRANCH				
MEDICAL UNIT	Connie Weeks; Rosemary Myers (T)			
FOOD UNIT	Allen Long			
COMMUNICATION UNIT	Todd Orr; Chris Gentili; Jim Olivarez			
PREPARED BY: Patty Bates				





## Fire Weather Forecast

FORECAST NO: 35  
PREDICTION FOR: Thursday  
SHIFT DATES: Aug 12, 2021  
FORECAST ISSUED: 1800 August 11, 2021

NAME OF FIRE: Dixie/Jumbo  
UNIT: ID-NCF NR FMT Team 5  
IMET: Jimmy Taeger

**WEATHER DISCUSSION:** A warming trend will continue through the end of the week. Winds will briefly switch to northeasterly on Thursday, with gusts to 20 mph. Afternoon relative humidity will lower to around 20-25% through the period, with lower values in the teens at times. Highs will rise into the 90s to low 100s by Saturday, then lower into the 70s and 80s by Monday with the return of showers and thunderstorms.

### WEATHER FORECAST TODAY (THURSDAY):

	Dixie (5,600 ft)	Mallard Creek (5,400 ft)	Mariah RAWs (3,400 ft)
Max/Min Temp.	87F / 52F	85F / 53F	99F / 67F
Min/Max RH	18% / 65%	22% / 72%	15% / 50%
Day Winds (20 foot)	N winds 10 to 15 mph becoming ENE with gusts to 20 mph around 1800. Strongest winds between 1500-2300.	NNW winds 10 to 15 mph becoming ENE with gusts to 20 mph around 1800. Strongest winds between 1700-2100.	NNE winds 5 to 10 mph, with gusts to 15 mph. Strongest winds between 1500-2200.
Night Winds (20 foot)	Becoming down drainage 2 to 4 mph after 0200.	Becoming down drainage 2 to 4 mph after 0000.	Downslope/downvalley winds 2-4 mph after 0000.
Notes	Be sure to drink plenty of water!	Be sure to drink plenty of water!	Be sure to drink plenty of water!

**WEATHER:** Partly cloudy skies. Warmer.

**LAL:** 1      **CWR:** 0%      **HAINES:** 4

**STABILITY / INVERSION:** Moderate night time inversion below active fire area. Mixing by 1100.

**SMOKE TRANSPORT WINDS:** Northwest 10 to 15 mph in afternoon.

Sunset Thursday: 1953

Sunrise Friday: 0538

Sunset Friday: 1951

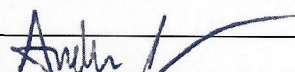
**OUTLOOK FOR FRIDAY (Dixie 5,600 FT):** Partly cloudy skies. Winds NNW 5 to 10 mph with gusts to 15 mph in the afternoon. Max Temps 89 to 92F. Min RH: 20%. Max RH: 60%. LAL 1. CWR 0%. Haines 4.

### THREE DAY EXTENDED (Dixie 5,600 FT)

	Max T	Min RH	Max RH	Ridge Winds	WX	LAL
SAT	90	22%	56%	NW 10 to 15 mph	None	1
SUN	83	30%	59%	WNW 15 to 25 mph	Iso Shwr/Storm 2	
MON	75	40%	70%	NW 10 to 15 mph	Iso Shwr/Storm 2	



## FIRE BEHAVIOR FORECAST

FORECAST NUMBER: 34	TYPE OF FIRE: Wildland Fire
FIRE NAME: Dixie/Jumbo	OPERATIONAL PERIOD: Thursday, August 12th, 2021
DATE ISSUED: 8/11/21	TIME ISSUED: 1900
UNIT: USFS-ID-NCF	SIGNED: Andrew Myhra – FBAN(t) 

### INPUTS

**WEATHER SUMMARY:** Continued hot and dry conditions persist through the weekend. Some possible relief by Monday. Today: Highs – 80s to 90s; Low RH – 20-25%; CWR 0%; Partly to mostly cloudy.

### OUTPUTS

#### FIRE BEHAVIOR

##### GENERAL:

- Conditions continue to heat up through Saturday. Saturday could see triple digit temps in the river canyon.

Critical Thresholds identified on the ID-NCF “Uplands” Pocket Card....Any combination of the following:

- RH less than 20%
- Temps over 80 degrees
- Wind speed over 20mph
- 1000hr fuel moisture less than 10%

*Tomorrow Forecast:*

- RH in the teens
- Temps in the high 80s and 90s
- Late afternoon winds switch from NW to NE and increase to 20mph
- 1000hr fuel moisture (FM-G) forecast 11%

- Potential exists late in the burn period for critical fire weather if maximum forecast conditions are present
- Wind shift forecast for 1800 tomorrow bringing winds out of the NE
- Heat is sparse on the fire, but persistent areas could be positioned to respond to weather conditions
- Through the weekend hot and dry weather will create potential for increased fire activity, especially if conditions become windy. Pay attention for “Hot, Dry, Windy” conditions.
- Low confidence (30%) in precipitation arriving Sunday night/Monday morning.
- Fuel moisture conditions are still below critical levels
  - ERCs are average for mid-August and climbing
  - Live fuel moistures will inhibit rapid spread in open areas at high elevations (burn scars)

##### SPECIFIC:

**Division C:** Minimal fire activity. Some heat persists near the crest of Mammoth Mountain.

**Division F:** Isolated heat remains on the north aspect of Blowout Ridge but is not actively spreading.

**Division T/X:** Active fire persists south of the burn scar in the Noble Creek drainage and NW of Mallard Creek campground. Watch for increased activity and wind surfacing on ridgetops, flats, and NW→SE aligned drainages.

**Jumbo Fire:** Isolated smoke in the SE corner of the fire. Continue to monitor by air.


**AIR OPERATIONS:** Sunset 1953. Sunrise Friday 0538. Moderate inversion mixing by 1100.

**FIRE BEHAVIOR SAFETY:** Wind shifts occurring late in the burn period after fuels have been exposed to hours of heating can cause dramatic change to fire behavior. Even light winds surfacing in the terrain can breathe oxygen into otherwise confined flames.








<b>ASSIGNMENT LIST</b>			1.Branch <b>DIXIE</b>		2. Division/Group <b>DIV F</b>		
3. Incident Name <b>DIXIE / JUMBO</b>			4. Operational Period: DAY Date: August 12, 2021      Time: 0600-2000				
<b>5. Operations Personnel</b>							
Operations Chief		Ashley Sites; Kevin Smith		Division/Group Supervisor		Matt Nelson	
Branch Director				Air Operations Director Air Attack Supervisor		Jeff Polack	
<b>6. Resources Assigned This Period</b>							
Strike Team/Task Force/ Resource Designator	Last Shift	Leader	No. Pers.	EMT	Trans. Needed	Drop Off PT./Time	Pick Up PT./Time
E-123 ENG4 Great Basin	8/13	David Grass	3		N	ICP/0600	ICP/2000
E-87 ENG6 DB Jet Engine	8/22	Greg Racicot	3		N	ICP/0600	ICP/2000
E-175 ENG6 Oklahoma	8/12	Clayton Hurst	2		N	ICP/0600	ICP/2000
E-176 ENG6 Verde Valley	8/16	Tucker Ihrman	3	X	N	ICP/0600	ICP/2000
E-15 WTS2 Lance LLC	8/15	John Hale	1		N	ICP/0600	ICP/2000
E-101 WTS2 Big Cedar	8/19	Darryl Baker	1		N	ICP/0600	ICP/2000
E-132 WTS2 Moranville Trucking	8/13	Mark Lock	1		N	ICP/0600	ICP/2000
E-206 WTS2 Lyons 06	8/26	Tom Roy	1		N	ICP/0600	ICP/2000
E-207 WTS2 Lyons 03	8/26	Larry Lyons	1		N	ICP/0600	ICP/2000
E-18 Log Loader Cox	8/22	Jerry Cox	2		N	ICP/0600	ICP/2000
E-200 Log Truck Cox	8/22	Stewart Wilson	1		N	ICP/0600	ICP/2000
E-201 Log Truck Cox	8/22	Darrel Cox	1		N	ICP/0600	ICP/2000
E-202 Log Loader Craig Mountain	8/23	Curtis Click	1		N	ICP/0600	ICP/2000
E-199 Cook & Sons Brusher	8/20	Todd Garmen	1		N	ICP/0600	ICP/2000
E-204 CHP3 Chipper	8/24	Galvin Julian	1		N	ICP/1000	ICP/2000
O-224 HEQB Tom Franklin	8/14		1		N	ICP/0600	ICP/2000
O-294 HEQB Matt Batton (T)	8/12		1		N	ICP/0600	ICP/2000
O-287.8 SOF2 Lee Hahnkamp (T)	8/14		1		N	ICP/0600	ICP/2000
O-379 EMPF Jeff Childers	8/22		1	X	N	DP1	DP1
E-128 Ambo 1 Wilderness Medics	8/20	Eric Siedband; Joshua Lowe	2	X	N	DP7	DP7
<b>7. Control Operations</b>							
<p><b>Task:</b> Maintain structure protection at Dixie and Comstock. Chip the Dixie Stage Road. Remove logs and stage at Dixie Summit. Continue suppression repair. Finish mowing the Dixie Road.</p> <p><b>Purpose:</b> Protect values at risk (Dixie, Black Diamond and Comstock). Maintain ingress/egress. Mitigate impacts from suppression actions.</p> <p><b>End State:</b> Access is maintained to the Dixie/Comstock area and values at risk are protected.</p>							
<b>8. Special Instructions:</b>							
<p>Identify resources for initial attack.</p> <p>Backhaul equipment and supply</p>							
<b>9. Division/Group Communication Summary</b>							
Function	Frequency - RX	Frequency - TX	Tone		Channel	Comments	
Command 7	170.0125	165.2500	110.9		7	Repeater assignments are suggestions. If another repeater works better, use it.	
Tactical	168.6000	168.6000	110.9		3		
Air to Ground CMD	168.4000	168.4000			13		
Prepared by (RESL) Patty Bates	Approved by (PSC) 		Date August 11, 2021			Time 2100	



<b>ASSIGNMENT LIST</b>				1.Branch <b>Dixie</b>		2. Division/Group <b>DIV T/X</b>	
3. Incident Name <div style="text-align: center;"><b>DIXIE / JUMBO</b></div>				4. Operational Period: DAY Date: August 12, 2021      Time: 0600-2000			
5. Operations Personnel							
Operations Chief		Ashley Sites; Kevin Smith		Division/Group Supervisor		Dave Wilkins; Drew Pattison (T)	
Branch Director				Air Operations Director Air Attack Supervisor		Jeff Polack	
6. Resources Assigned This Period							
Strike Team/Task Force/ Resource Designator	Last Shift	Leader	No. Pers.	EMT	Trans. Needed	Drop Off PT./Time	Pick Up PT./Time
O-192 WFM Pilot Peak	8/12	Travis Clark	10	X	N	ICP/0600	ICP/2000
O-397 WFM Saguaro	8/23	Kress Sanders	9		N	ICP/0600	ICP/2000
O-404 WFM1 Teton	8/24	Eric Hawes	10	X	N	ICP/0600	ICP/2000
E-4 ENG6 Metal Works	8/14	Isaach Cordova	3		N	ICP/0600	ICP/2000
E-85 ENG6 Cougar	8/16	Cathy Reilly	3		N	ICP/0600	ICP/2000
E-149 ENG6 Griffith	8/22	William Griffith	3		N	ICP/0600	ICP/2000
E-177 ENG6 Curtis Engine	8/15	Charles Curtis	3		N	ICP/0600	ICP/2000
E-14 WTS2 Smith	8/24	Spencer Gardner	1		N	ICP/0600	ICP/2000
E-16 WTS2 Flash EX	8/18	Jesi Eckel	1		N	ICP/0600	ICP/2000
E-104 HETF Aaron Downing Logging	8/12	Aaron Downing	10		N	ICP/0600	ICP/2000
E-130 HETF Bonnalie Logging	8/12	Nita Lorentz	12		N	ICP/0600	ICP/2000
E-102 Processer Anderson	8/20	Alex Mattson; Scott Schucher	2		N	ICP/0600	ICP/2000
E-97 MAST Downing Logging	8/28	Hunter Clouck; A McKinsey	2		N	ICP/0600	ICP/2000
O-293 HEQB Ryan Recktenwald (T)	8/12		1		N	ICP/0600	ICP/2000
O-397.2 TFLD Jay Yancik	8/23		1		N	ICP/0600	ICP/2000
O-298 HEQB Karl Honkonen (T)	8/13		1		N	ICP/0600	ICP/2000
O-188 FAL A & F Fallers	8/24	Tim Jenkins; Fausto Rivera	2		N	ICP/0600	ICP/2000
O-287.8 SOF2 Lee Hahnkamp (T)	8/14		1		N	ICP/0600	ICP/2000
O-371 EMPF Chris Jacks	8/22		1	X	N	ICP/0600	ICP/2000
O-333 SOFR Willie Cirone	8/17		1		N	ICP/0600	ICP/2000
E-128 Ambo 1 Wilderness Medics	820	Eric Siedband; Joshua Lowe	2	X	N	DP7	DP7
7. Control Operations							
<p><b>Task:</b> Line and mop up spots within the "crab claw. Maintain hose lays and sprinklers into lower Mallard Creek. Haul logs. Continue suppression repair; water bar secondary lines.</p> <p><b>Purpose:</b> Keep fire from crossing Red River drainage and point protect values at risk.</p> <p><b>End State:</b> Slop over/spot fires are contained and the main fire is held to the south of Dixie Road. Access along Jack Mountain Road and Forest Road 421 to Whitewater Ranch remains open.</p>							
8. Special Instructions:							
Backhaul equipment and supplies.							
9. Division/Group Communication Summary							
Function	Frequency - RX	Frequency - TX	Tone		Channel	Repeater assignments are suggestions. If another repeater works better, use it.	
Command 9	169.8125	164.6750	110.9		9		
Tactical	168.2000	168.2000	110.9		2		
Air to Ground CMD	168.4000	168.4000			13		
Prepared by (RESL) Patty Bates		Approved by (PSC) 			Date August 11, 2021		Time 2100



INCIDENT RADIO COMMUNICATIONS PLAN I-205				1. INCIDENT NAME		2. DATE/TIME PREPARED		3. OPERATIONAL PERIOD DATE/TIME			
				Dixie/Jumbo Fire		8/11/2021		8/12/2021 0600 to 2000			
4. BASIC RADIO CHANNEL UTILIZATION											
Ch #	Function	Channel Name	Assignment	RX Freq	NW	RX Tone/NAC	TX Freq	NW	TX Tone/NAC	Mode Analog (A) Digital (D) Mixed (M)	Remarks
1	TACTICAL	TAC 1		168.0500	N		168.0500	N		A	
2	TACTICAL	TAC 2	DIV T/X	168.2000	N	110.9	168.2000	N	110.9	A	DIVISION TANGO, DIVISION XRAY
3	TACTICAL	TAC 3	DIV F	168.6000	N	110.9	168.6000	N	110.9	A	DIVISION FOXTROT
4	TACTICAL	TAC 4		168.2500	N	110.9	168.2500	N	110.9	A	
5	TACTICAL	TAC 5	DIV C	166.7250	N	110.9	166.7250	N	110.9	A	DIVISION CHARLIE
6	TACTICAL	TAC 6		166.7750	N	110.9	166.7750	N	110.9	A	
7	COMMAND	CMD 7	DIV F	170.0125	N	110.9	165.2500	N	110.9	A	OREGON BUTTE LOOKOUT
8	COMMAND	CMD 8			N			N		A	
9	COMMAND	CMD 9	DIV T/X	169.8125	N	110.9	164.6750	N	110.9	A	BOSTON MOUNTAIN
10	COMMAND	CMD 10	DIV C	171.8875	N	110.9	162.1875	N	110.9	A	SHEEPEATER LOOKOUT
11	COMMAND	CMD 11	DIV F	171.4125	N	110.9	164.6000	N	110.9	A	MOOSE BUTTE
12	LOCAL FS NET	OREBUTTE	ALL DIV	173.1375	N	0.0	166.2000	N	127.3	A	NEZ EAST REPEATER
13	AIR TO GROUND	A/G CMD	ALL DIV	168.4000	N	0.0	168.4000	N	0.0	A	A/G COMMAND
14											
15	AIR AMBULANCE	EMS 2	EMERGENCY	155.2800	N	0.0	155.2800	N	0.0	A	STATE COMM/AIR AMBULANCE
16	AIR GUARD	AIRGUARD	EMERGENCY	168.6250	N	0.0	168.6250	N	110.9	A	EMERGENCY USE ONLY
5. Special Instructions:											
6. I-205 Prepared By: Communications Unit Leader				Name: TODD ORR (COML)				Signature: <i>Todd Orr COML</i>			



ICS-220 AIR OPERATIONS SUMMARY

Prepared By: Jeff Polack

08/11/2021

Prepared Time: 2000

1. INCIDENT NAME:  
Dixie / Jumbo Fires

2. OPS PERIOD DATE:  
08/12/2021

START TIME:  
0800

END TIME:  
2000

SUNRISE  
0538

SUNSET:  
1954

Pumpkin: for  
returning to base  
only

3. REMARKS (Safety Notes, Hazards, Air Operations Special Equipment, etc.):  
Assess mission complexity and the Benefit/Risk of the mission. Ensure visibility and winds are adequate to safely conduct flight operations. Ensure safe vertical & horizontal separation between aircraft in smokey conditions. Call in and out of the dips. Beware of general aviation in Salmon River corridor.  
Smoky conditions can hamper aviation operations, adhere to visibility limitations, and DO NOT be pressured into accepting a mission that you know or feel is unsafe!  
*Terminate operational rotorwing no later than sunset.*

4. READY ALERT AIRCRAFT:  
H.B.205PT, Payette S.H. Contact GVC with mission details.  
Hospitals:  
-Syringa General land Grangeville at GIC to meet ambulance.  
-St. Joseph's Regional 46° 25.02 'x 117° 01.45' Rooftop T-III Pad.

5. TFR's:  
Dixie Fire: 1/4070 Freq:124.2500 Polygon, Altitude: Surface to 10,500 MSL

6. POSITION

NAME

PHONE #

7. FREQUENCIES

AM

FM

Forest Aviation Officer

Willy Acton

208-507-0942

A/G 1 Primary

168.4000

NCF Dispatch

Aircraft Desk

208-983-6803

AOBD

Jeff Polack

208-816-3447

A/A Helicopters  
A/A F/W

126.3000  
124.2500

ASGS

XXXX

XXX-XXX-XXX

Command from  
Mullins HB CMD-11

171.4125Rx  
164.6000Tx  
110.9TT

HEBM  
Mullins HLB

Ryan Witter

208-842-2671  
(landline)

EMS 2  
(Ch. 15 in I-205)

155.2800Rx  
155.2800Tx

HMGB  
Tolo Helibase

John Abernathy

720-837-9591

National Flight Follow

168.6500  
110.9 TX/RX

Air Attack

TBD

XXX-XXX-XXXX

AIR GUARD

168.6250  
110.9 TX/RX

NOTES: Mullins HLB: 45° 43.3' x 115° 22.2' Elevation: 4299'  
Tolo HLB: 45° 55.003' x 116° 11.446' Elevation: 3343'  
PLANNED MISSIONS:Recons,Buckets and Cargo Support Local I.A. whenever possible.

8. Aircraft Ordering Protocol  
Air Attack Platforms: Located GIC  
  
AIRTANKERS/SCOOPERS  
Order thru Air Attack/Line Operation  
  
SEATS  
Order thru Air Attack/Line Operatons  
  
AIR ATTACK  
Order thru Line Operations to Helibase to Aircraft Desk in Grangeville  
  
Helicopters  
Order thru Division Supervisor to Helibase. Additional helicopters available through Grangeville.  
  
Email Dixie Aircraft Costs Daily to:  
joyce\_anderson@firenet.gov  
[2021.dixie.finance@firenet.gov](mailto:2021.dixie.finance@firenet.gov),  
[jeffrey\\_polack@firenet.gov](mailto:jeffrey_polack@firenet.gov)

9. HELICOPTERS

CALL SIGN / FAA N#

TY

MAKE/ MODEL

BASE

Start

Avail

REMARKS

CALL SIGN / FAA N#

BASE

MAKE/ MODEL

TY

Start

Avail

REMARKS

303AJ

1

CH-47D

Tolo

0900

0930

Buckets

3181F

GIC

UH-1F

2

0800

0830

Buckets, external cargo  
\*Forest prepo resource\*

205PT

2

B-205+

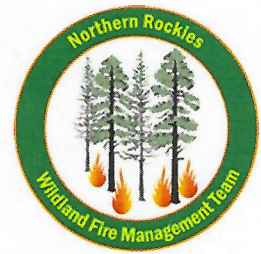
Mullins

0800

0830

Buckets, Cargo, PAX





# Safety Message

Major Hazards and Risks: Risk Management Process

## RISK MANAGEMENT PROCESS:

Fire operations risk management is outlined in the IRPG pg. 1.

The five-step process provides firefighters and fire managers a simple, universal, and consistent way to practice risk management by:

- Establishing situation awareness by identifying hazards.
  - Assessing hazard potential.
  - Developing hazard controls and making risk management decisions.
  - Implementing hazard controls.
  - Supervising implementation and evaluating effectiveness.
- 
- **Hazard** - A condition or situation that exists within the working environment capable of causing physical harm, injury, or damage.
  - **Risk** - The likelihood or possibility of hazardous consequences in terms of severity or probability.
  - **Risk Management** - The process whereby management decisions are made and actions taken concerning control of hazards and acceptance of remaining risk.

### COVID-19

- **Social Distancing** - Maintain 6' foot distance whenever possible.
- **Wear a mask** – For everyone's safety "wear a mask" when riding in vehicles in groups of more than one not part of your "Module of One" and social distancing is not possible.
- **Wash Hands**- Wash hands frequently using soap and water or use hand sanitizer if needed.
- **Watch for symptoms** - Watch personnel for cough, headache, loss of taste or smell, temperature, shortness of breath.
- **Use Common sense**- If sick, stay home, and report illness. Avoid crowded locations.
- **Monitor**- CDC web site provides updated information. Local health department.

**Be Mindful About Safety in all Your Actions**

*Northern Rockies Team 5*

## DIXIE/JUMBO FIRE

### Incident within an Incident Emergency Action Plan

In the case of a serious accident requiring patient transport to a medical facility:

- The closest ranking Operations Leader (i.e., Division Supervisor) at the accident scene will take charge and be the Point of Contact (POC).
- Use the 8-line protocol to assess patient; if patient evaluation is either red or yellow use **Dixie Fire Command Frequency Identified for the Division the IWI is occurring on**. Air extraction resources will use Air to Ground tactical or Air Ambulance EMS2.
- If incident should occur outside the Dixie/Jumbo Fires contact 911 and Dixie Communications on Command frequency for monitoring and support and to notify whether patient is incident personnel or civilian.
- Patients evaluated as Green notify nearest supervisor of the location of the incident and assigned EMT to determine treatment and transport to Medical Unit.
- Upon notification of a serious accident, the Following will report to the ICP Communications trailer: Incident Commander, Safety Officer, Operations Section Chief (Planning OPS), and Medical Unit Leader to monitor IWI. Safety Officer will notify Finance and/or Comp Claims of the IWI.
- Incident radio traffic will be monitored from 0500 to 2200 every day on Command at ICP.

Approved by: /s/ Joe Sampson

Incident Commander

Date: 08/01/2021



1. Incident/Project Name		2. Operational Period: August 12, 2021 0600-2000				
Dixie/Jumbo Fires		Date/Time 08/11/21 1500				
3. Ambulance Services						
Ambulance	Complete Address	Phone & EMS Frequency	Advanced Life Support (ALS) Yes No			
Elk City Ambulance	Elk City, Idaho	911 155.280			X	
Wilderness Medics	Red River Base Camp	Command	X			
4. Air Ambulance Services						
Name	Phone	Type of Aircraft & Capability				
Life Flight Network	911 155.340 tan	Paramedics/Flight Nurse/Night vision				
2 Bear Air	911 155.340 tan	Hoist/Paramedics				
5. Hospitals						
Name Complete Address	GPS Datum – WGS 84 Coordinate Standard Degrees Decimal Minutes DD° MM.MMM' N - Lat DD° MM.MMM' W - Long	Travel Time Air Gnd	Phone	Helipad Yes No	Level of Care Facility	
Syringa General Hospital 607 W. Main Grangeville, ID 83530	Lat:	30 Min	2 Hrs	208-983-5919 ER	<input type="checkbox"/> <input checked="" type="checkbox"/>	Critical Access  Land at Airport
	Long					
	VHF: 155.280 white					
St. Luke's Medical Center McCall, Idaho	Lat: N 44 53.22	45 Min		208-634-2221	X	Critical Access  Land at Airport
	Long W 116 06.5					
	VHF: 155.280 white					
St. Joseph's Regional Medical Center 415 6 <sup>th</sup> St. Lewiston, Idaho 83501	Lat: N 46 25.02	45 Min	3 Hrs	208-799-5799 ER	X	Level 3  Roof Top Pad Level 2  Ground Level Pad
	Long W 117 01.45					
	VHF: 155.280 white					
Community Medical Center 2827 Ft. Missoula Rd., Missoula, MT	Lat: N 46 50.909	70 Min		406-327-4171 ER	X	
	Long W 114 02.866					
	VHF: 155.280 white					
6.						
Division   Branch   Group						
All Divisions:	Crew Supplies:	Crew EMTs:				
DIV C	N/A	Unstaffed with Medical Unit EMTs				
DIV F DP 7	ALS Ambulance	Wilderness Medics (Ambo 1) DP 7				
DIV F DP1	ALS pack, TRS, KED, AED	Jeff Childers - EMPF				
DIV T	ALS Ambulance	Wilderness Medics (Ambo 1) DP 7				
DIXIE	ALS Ambulance	Best Practice Medicine (Ambo 2)				
MALLARD CREEK	ALS pack, TRS, KED, AED	Chris Jacks - EMPF				
Prepared by: Connie Weeks	MEDL	Approved by: Dave Smith				



# LEAVING DIXIE:



## 1. When am I demobing?

Your last work day is listed in the daily IAP, your demob is the following day. Questions about demob can be answered by visiting the demob unit's tent or by emailing [2021.dixie.demob@firenet.gov](mailto:2021.dixie.demob@firenet.gov)

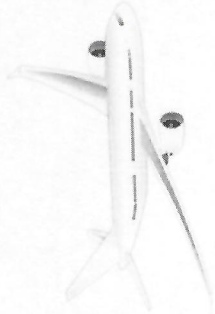
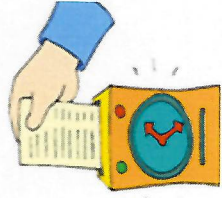
## 2. How do I demob?

On your demob date start by visiting the demob tent and pick up your Demob Checklist form. "Run the gauntlet" to Supply, Commo, and Finance. Last stop on the gauntlet is DEMOB.

**3. Complete the Remote Checkout** via the QR Code on the IAP. If you have connectivity issues, DEMOB can help.

## HELPFUL TIPS:

- **TURN IN YOUR TIME DAILY!** (This simple step will greatly simplify your demob)
- Email approved CTRs/Shift Tickets, [2021.dixie.finance@firenet.gov](mailto:2021.dixie.finance@firenet.gov)
- *OR*
- Deposit approved CTRs/Shift Tickets in the box conveniently located on the table at morning briefing.
- You can start your demob process the day before if you are leaving the next morning.
- If you came to this incident in an airplane and you haven't personally spoken with DEMOB, get it done sooner than later.
- Listen for any updates on demobing at the morning briefing.
- Above all: **Travel Safely Home**





# YOUR DIXIE FINANCE IS HERE FOR YOU!

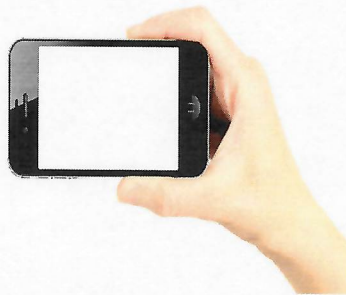
Need to submit your approved CTR or shift ticket?

How about your resource order?

AD hiring paperwork?

## IT'S EASY TO DO!

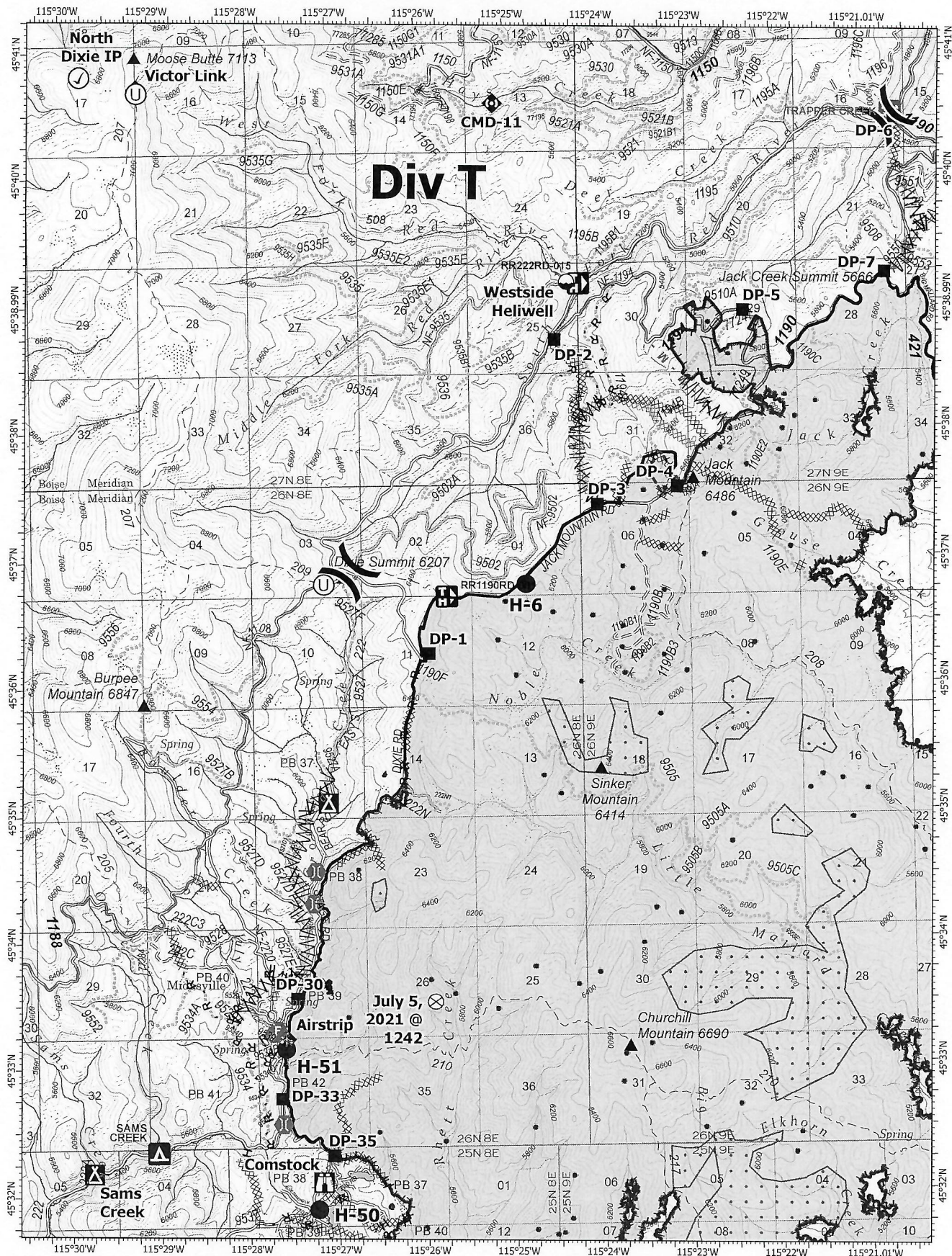
Use your cell phone to take a picture of the  
document you need to send



And email it to:

**2021.dixie.finance@firenet.gov**





## IAP Map

Dixie  
ID-NCF-000448  
08/12/2021

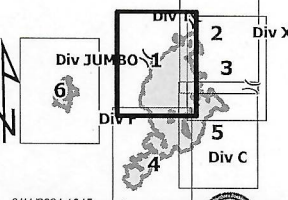
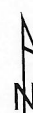
43,225 acres at 08/10/2021 23:56 PDT  
Acres from IR and GPS

0 0.5 1 Miles

- Check Point
- Dip Site
- Hellsport
- Unimproved Landing Area
- ( Division Break
- Drop Point
- ▲ Camp
- ▲ Lookout
- ⊗ Fire Origin
- Fire Station

- ◆ Bridge
- ◆ Mobile Weather Unit
- ◆ Repeater
- ▭ Wildfire Daily Fire Perimeter
- ▭ Completed Dozer Line
- ▭ Completed Fuel Break
- ▭ Completed Hand Line
- ▭ Completed Road as Line
- ▭ Planned Dozer Line
- ▭ Planned Fuel Break

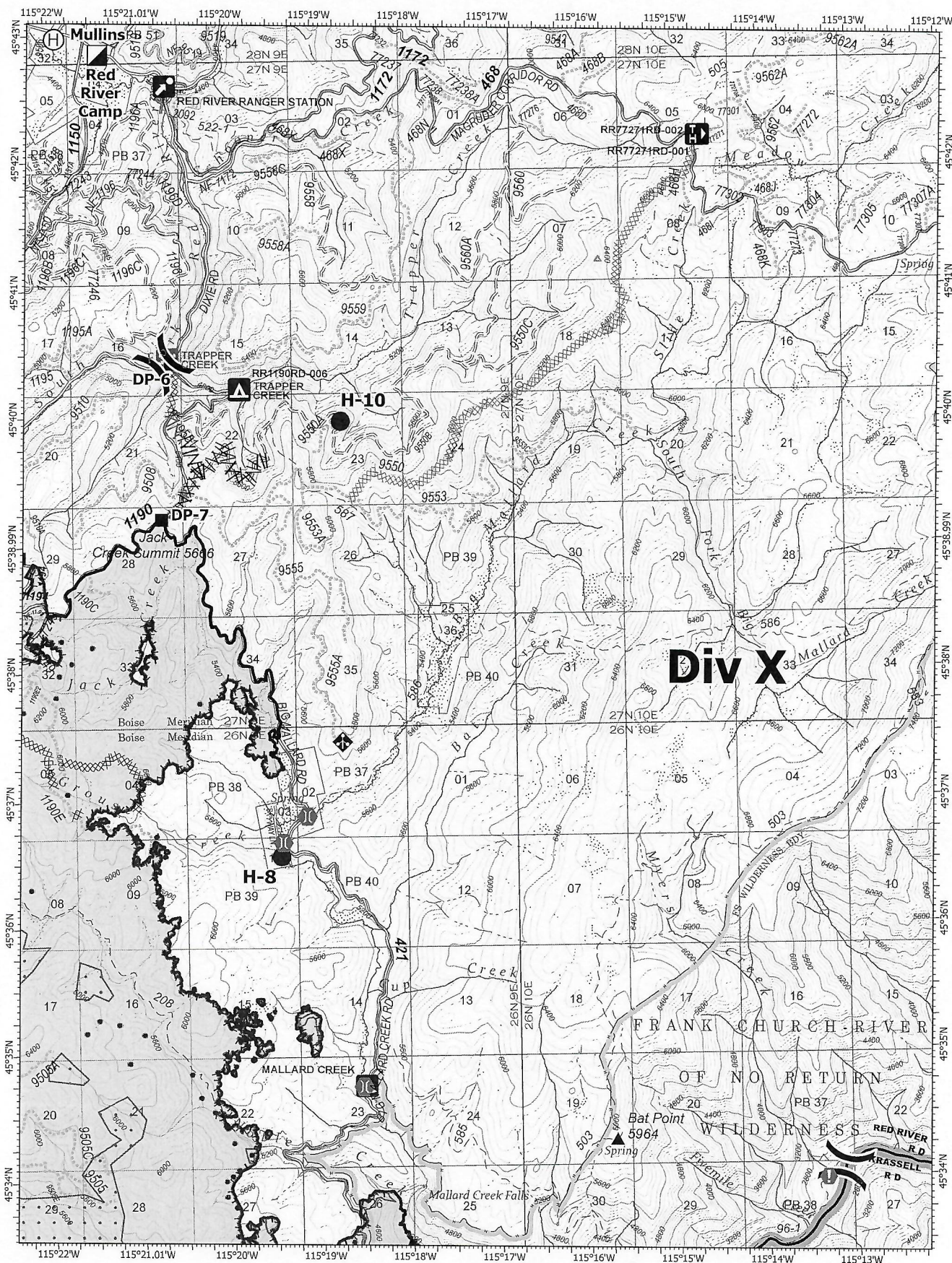
- M Planned Mixed Construction Line
- R Planned Road as Line
- ▭ Access or Improved Road
- ▭ Other
- ▭ Fire Edge
- ▭ Contained Line
- ▭ IR Isolated Heat Source
- ▭ IR Heat Perimeter
- ▭ IR Scattered Heat



8/11/2021 1845  
1:50,000  
North American 1983 Datum, LatLong Grid







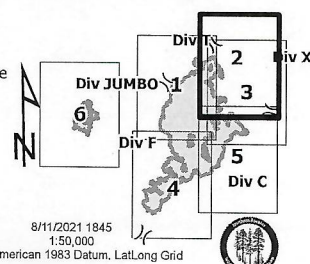
## IAP Map

Dixie  
ID-NCF-000448  
08/12/2021

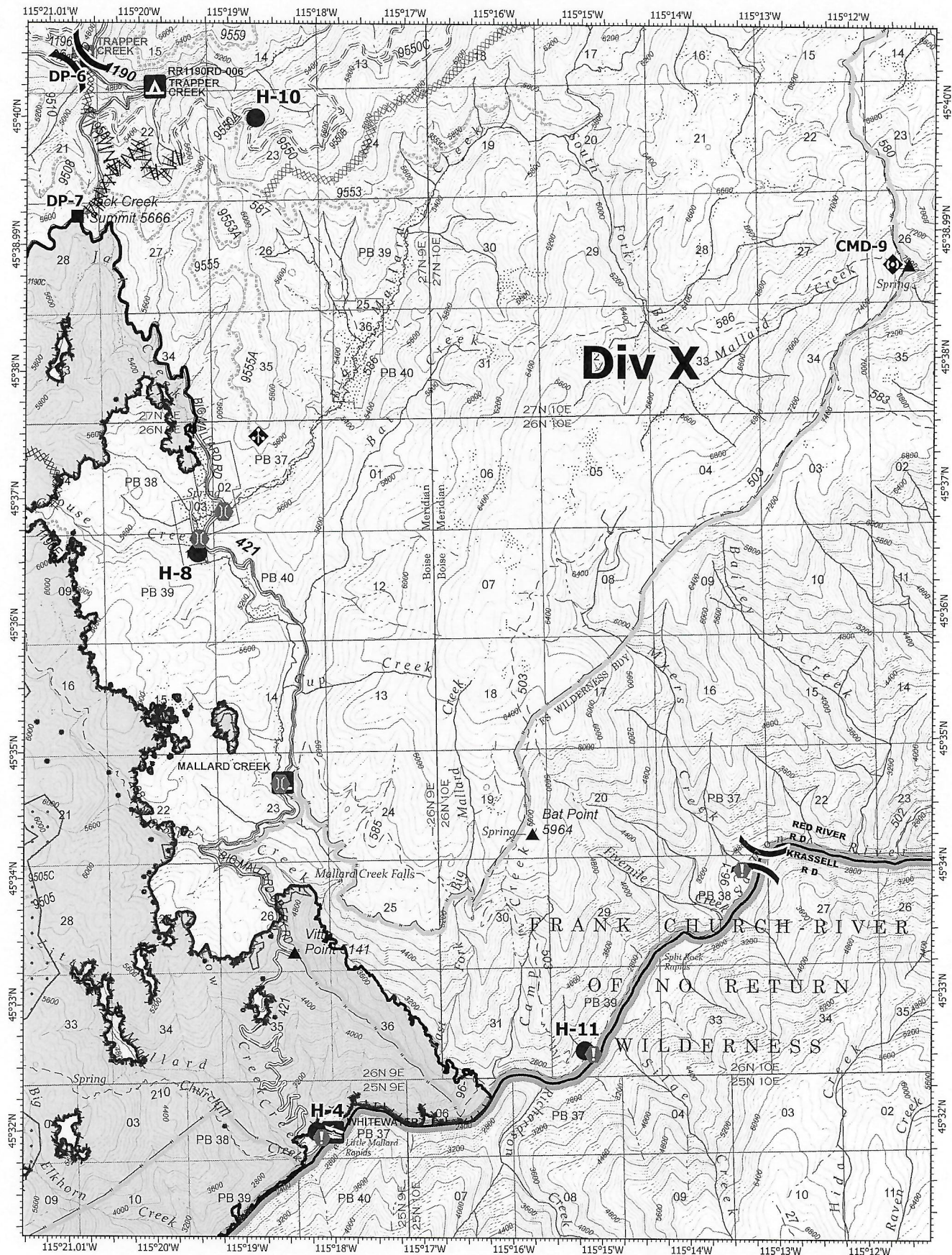
43,225 acres as 08/10/2021 23:56 PDT  
Acres from IR and GPS

0 0.5 1  
Miles

- Helispot
- ⊕ Helibase
- )( Division Break
- ▣ Incident Command Post
- ▣ Drop Point
- ⬢ Value at Risk
- ⬢ Bridge
- ⬢ Mobile Weather Unit
- ▣ Wildfire Daily Fire Perimeter
- ▣ Completed Dozer Line
- ▣ Completed Fuel Break
- ▣ Planned Dozer Line
- ▣ Planned Fuel Break
- ▣ Planned Road as Line
- ▣ Fire Edge
- ▣ Contained Line
- IR Isolated Heat Source
- ▣ IR Heat Perimeter
- ▣ IR Intense Heat
- ▣ IR Scattered Heat







## IAP Map

Dixie  
ID-NCF-000448  
08/12/2021

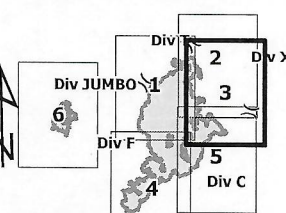
43,225 acres as of 08/10/2021 23:56 PDT  
Acres from IR and GPS

0 0.5 1  
Miles

- Helispot
- ( ) Division Break
- Drop Point
- ⊕ Value at Risk
- ⚙ Bridge
- 📶 Mobile Weather Unit
- ⬢ Repeater

- ▭ Wildfire Daily Fire Perimeter
- ▨ Completed Dozer Line
- ▩ Completed Fuel Break
- ▧ Planned Dozer Line
- ▦ Planned Fuel Break
- Planned Road as Line
- ▬ Fire Edge

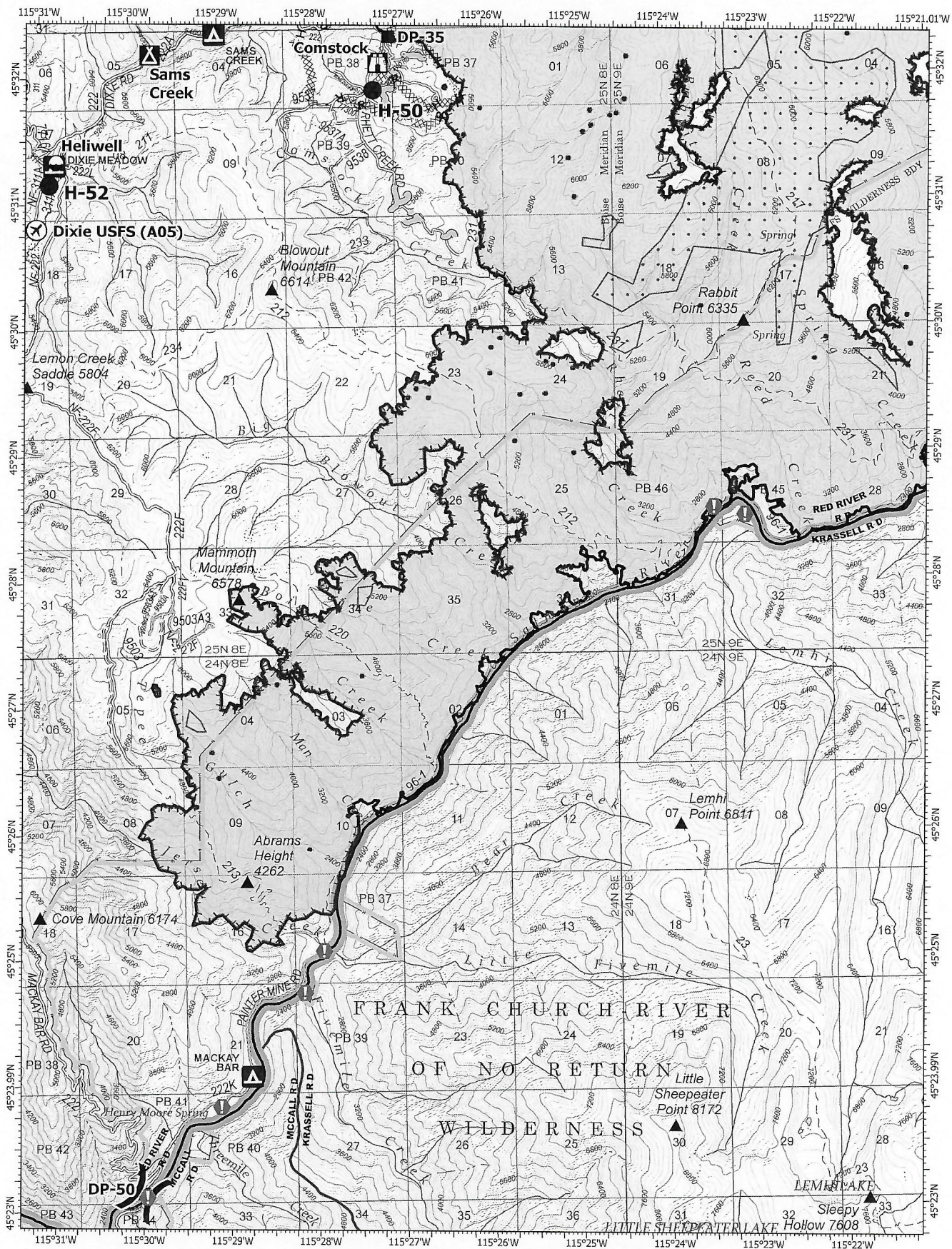
- Contained Line
- IR Isolated Heat Source
- ▭ IR Heat Perimeter
- ▨ IR Intense Heat
- ▧ IR Scattered Heat



8/11/2021 1846  
1:50,000  
North American 1983 Datum, Lat/Long Grid







## IAP Map

Dixie  
ID-NCF-000448  
08/12/2021

43,225 acres on 08/10/2021 23:56 PDT  
Acres from IR and GPS

0 0.5 1  
Miles

- ⊗ Airstrip or Airport
- Dip Site
- Helispot
- ⌋ Division Break
- ⬮ Drop Point
- ⬮ Camp
- ⬮ Lookout

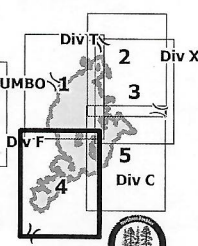
- ⬮ Value at Risk
- ⬮ Bridge
- ⬮ Repeater
- ⬮ Wildfire Daily Fire Perimeter
- ⬮ Completed Dozer Line
- ⬮ Completed Hand Line
- ⬮ Completed Road as Line

- ⬮ Access or Improved Road
- ⬮ Fire Edge
- ⬮ Contained Line
- ⬮ IR Isolated Heat Source
- ⬮ IR Heat Perimeter
- ⬮ IR Scattered Heat

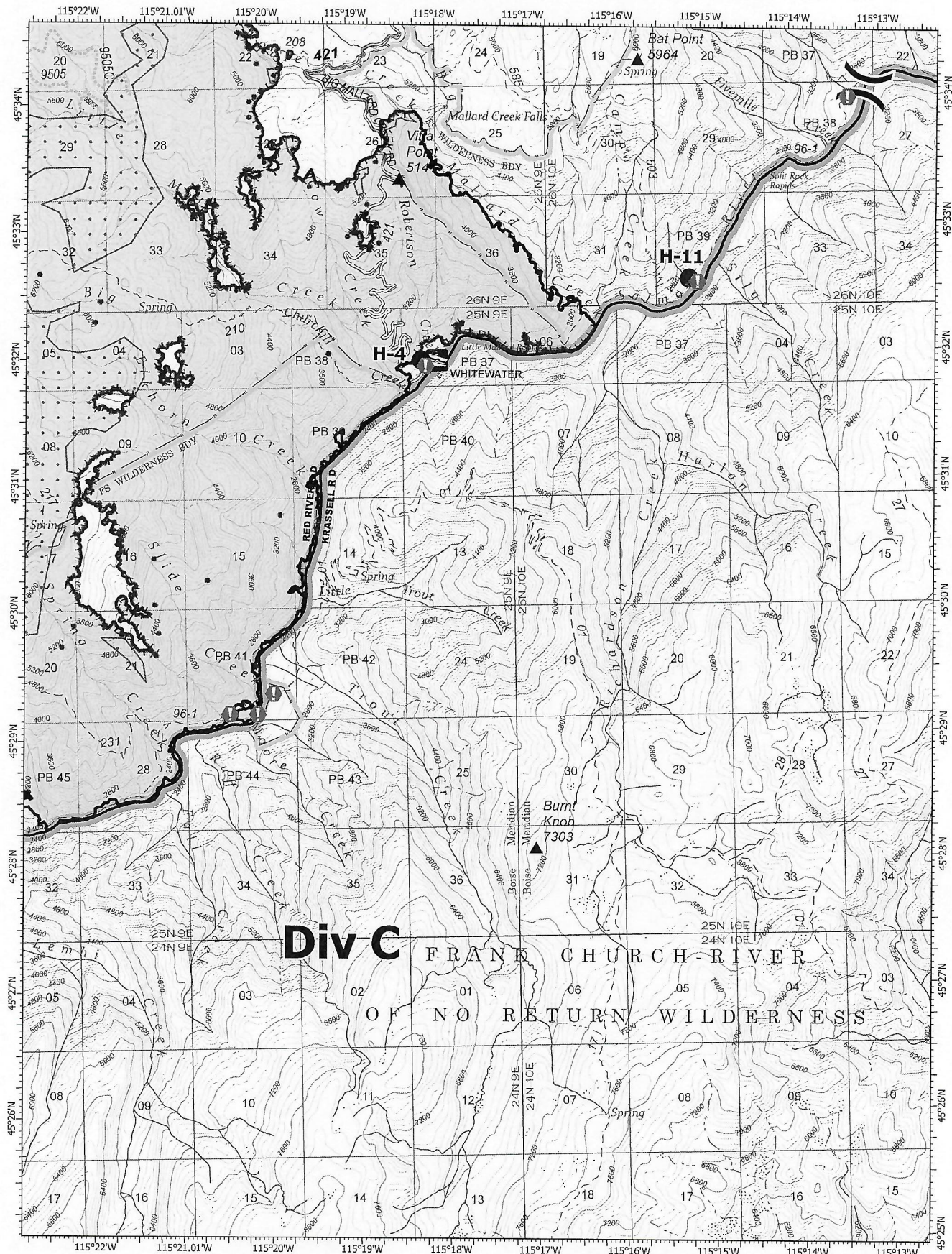


8/11/2021 1846  
1:50,000

North American 1983 Datum, Lat/Long Grid







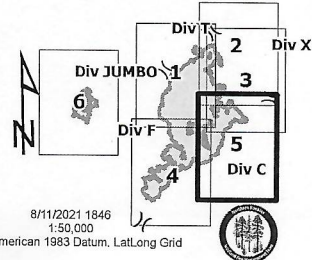
## IAP Map

Dixie  
ID-NCF-000448  
08/12/2021

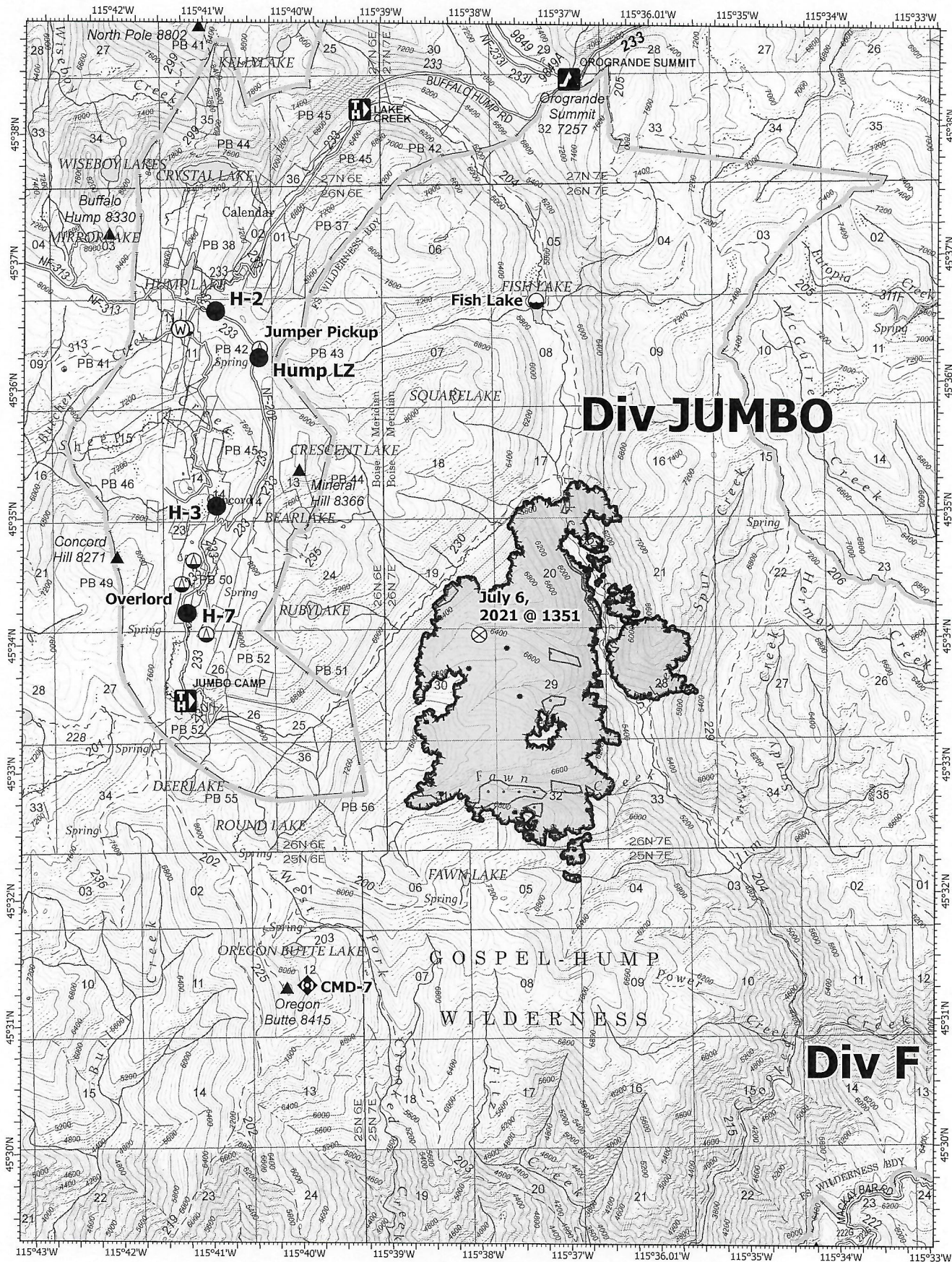
43,225 acres at 08/10/2021 23:56 PDT  
Acres from IR and GPS

0 0.5 1  
Miles

- Helispot
- )( Division Break
- ⊕ Value at Risk
- ⊕ Bridge
- ▨ Wildfire Daily Fire Perimeter
- ▨ Fire Edge
- Contained Line
- IR Isolated Heat Source
- ▨ IR Heat Perimeter
- ▨ IR Intense Heat
- ▨ IR Scattered Heat







## IAP Map

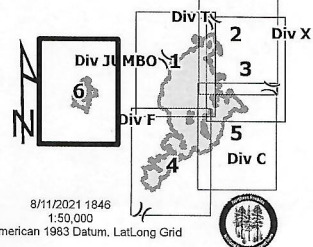
Jumbo  
ID-NCF-000463  
08/12/2021

2,680 acres at 08/10/2021 23:56 PDT  
Acres from IR and GPS

0 0.5 1  
Miles

- Dip Site
- Helispot
- Sling Site
- Fire Origin
- Repeater
- Water Source

- Wildfire Daily Fire Perimeter
- Fire Edge
- IR Isolated Heat Source
- IR Heat Perimeter
- IR Scattered Heat









# Medical Incident Report – 8 Line

FOR A NON-EMERGENCY INCIDENT, WORK THROUGH CHAIN OF COMMAND TO REPORT AND TRANSPORT INJURED PERSONNEL AS NECESSARY.

FOR A MEDICAL EMERGENCY: IDENTIFY ON SCENE INCIDENT COMMANDER BY NAME AND POSITION AND ANNOUNCE "MEDICAL EMERGENCY" TO INITIATE RESPONSE FROM IMT COMMUNICATIONS/DISPATCH.

Use the following items to communicate situation to communications/dispatch.

## 1. CONTACT COMMUNICATIONS / DISPATCH (Verify correct frequency prior to starting report)

Ex: "Communications, Div. Alpha. Stand-by for Emergency Traffic."

## 2. INCIDENT STATUS: Provide incident summary (including number of patients) and command structure.

Ex: "Communications, I have a Red priority patient, unconscious, struck by a falling tree. Requesting air ambulance to Forest Road 1 at (Lat./Long.) This will be the Trout Meadow Medical, IC is TFLD Jones. EMT Smith is providing medical care."

Severity of Emergency / Transport Priority	<input type="checkbox"/> <b>RED / PRIORITY 1 Life or limb threatening injury or illness. Evacuation need is IMMEDIATE</b> Ex: Unconscious, difficulty breathing, bleeding severely, 2° – 3° burns more than 4 palm sizes, heat stroke, disoriented. <input type="checkbox"/> <b>YELLOW / PRIORITY 2 Serious Injury or illness. Evacuation may be DELAYED if necessary.</b> Ex: Significant trauma, unable to walk, 2° – 3° burns not more than 1-3 palm sizes. <input type="checkbox"/> <b>GREEN / PRIORITY 3 Minor Injury or illness. Non-Emergency transport</b> Ex: Sprains, strains, minor heat-related illness.	
Nature of Injury or Illness & Mechanism of Injury		Brief Summary of Injury or Illness (Ex: Unconscious, Struck by Falling Tree)
Transport Request		Air Ambulance / Short Haul/Hoist Ground Ambulance / Other
Patient Location		Descriptive Location & Lat. / Long. (WGS84)
Incident Name		Geographic Name + "Medical" (Ex: Trout Meadow Medical)
On-Scene Incident Commander		Name of on-scene IC of Incident within an Incident (Ex: TFLD Jones)
Patient Care		Name of Care Provider (Ex: EMT Smith)

## 3. INITIAL PATIENT ASSESSMENT: Complete this section for each patient as applicable (start with the most severe patient)

Patient Assessment:

See IRPG page 106

Treatment:

## 4. TRANSPORT PLAN:

Evacuation Location (if different): (Descriptive Location (drop point, intersection, etc.) or Lat. / Long.) Patient's ETA to Evacuation Location:

Helispot / Extraction Site Size and Hazards:

## 5. ADDITIONAL RESOURCES / EQUIPMENT NEEDS:

Example: Paramedic/EMT, Crews, Immobilization Devices, AED, Oxygen, Trauma Bag, IV/Fluid(s), Splints, Rope rescue, Wheeled litter, HAZMAT, Extrication

## 6. COMMUNICATIONS: Identify State Air/Ground EMS Frequencies and Hospital Contacts as applicable

Function	Channel Name/Number	Receive (RX)	Tone/NAC *	Transmit (TX)	Tone/NAC *
COMMAND					
AIR-TO-GRND					
TACTICAL					

## 7. CONTINGENCY: Considerations: If primary options fail, what actions can be implemented in conjunction with primary evacuation method? Be thinking ahead.

## 8. ADDITIONAL INFORMATION: Updates/Changes, etc.