

Dixie Fire

Jumbo Fire

ID-NCF-000448

P1N402 (0117)

Saturday August 14, 2021



INCIDENT ACTION PLAN

Scan for IAPs, Maps, Check-in and Demob



INCIDENT OBJECTIVES	1. Incident Name DIXIE / JUMBO	2. Date Prepared August 13, 2021	3. Time 2100																														
4. Operational Period: August 14, 2021 DAY OPERATIONS 0600 - 2000																																	
Incident Objectives <ol style="list-style-type: none"> 1. The Dixie and Jumbo fires will be managed using a variety of suppression strategies based on firefighter safety, availability of firefighting resource and threats to values at risk. 2. Maintain access for firefighting resources and public egress within the Dixie and Jumbo fires' planning area. 3. Execute strategies and tactics to reduce fire impacts to primary private and commercial structures, where possible. 4. Consider efforts to moderate fire behavior to reduce probability of disrupting primary distribution lines to affected communities and communication sites associated with emergency response. 5. Reduce negative impacts of fire management actions on cultural and natural features in the area, where safety and efficacy of suppression actions do not conflict with this objective. Order of priority: Nationally significant cultural resources, critical anadromous fish habitat and other sensitive watershed conditions identified by Agency Administrators. Incident Requirements <ol style="list-style-type: none"> 1. Utilize risk-informed decision making to reduce fire fighter exposure to hazards while providing for public safety. 2. Utilize pre-existing plans for community protection opportunities in North Star, Black Diamond, Comstock, Dixie, Mallard Ranch, Red River, Concord, Humptown, Frogtown, Fivemile Bar, Mackay Bar, and Copenhaver Ranch. 3. Obtain approval for use of mechanized equipment in the Gospel Hump and Frank Church – River of No Return Wilderness areas. 4. Document the quantity and placement of long-term retardant. Minimize the use of long-term retardant in designated wilderness areas, except to protect human life or to achieve point protection objectives. 5. Any mechanical equipment operations within Inventoried Roadless Areas need prior approval from Agency Administrator. 6. Provide current and accurate information to the media, public, and local office holders as to the status of fires within the complex. 7. Provide for rehabilitation of areas impacted by incident operations in coordination with jurisdictional agency's resource advisor(s). 																																	
6. Weather Forecast for Period: <i>See attached Spot Fire Weather Forecast</i>																																	
7. General Safety Message: <i>See attached Safety Message</i>																																	
8. Attachments (mark if attached) <table border="1" style="width: 100%; border-collapse: collapse; margin-top: 5px;"> <tr> <td style="width: 33%; text-align: center;"><input checked="" type="checkbox"/></td> <td style="width: 33%;">ICS 203 Organization List</td> <td style="width: 33%; text-align: center;"><input checked="" type="checkbox"/></td> <td style="width: 33%;">ICS 205 Communication Plan</td> <td style="width: 33%; text-align: center;"><input checked="" type="checkbox"/></td> <td style="width: 33%;">Finance message</td> </tr> <tr> <td style="text-align: center;"><input checked="" type="checkbox"/></td> <td>Spot Fire Weather Forecast</td> <td style="text-align: center;"><input checked="" type="checkbox"/></td> <td>Safety Message</td> <td style="text-align: center;"><input checked="" type="checkbox"/></td> <td>Incident Maps</td> </tr> <tr> <td style="text-align: center;"><input checked="" type="checkbox"/></td> <td>Fire Behavior Forecast</td> <td style="text-align: center;"><input checked="" type="checkbox"/></td> <td>Incident within an Incident</td> <td style="text-align: center;"><input checked="" type="checkbox"/></td> <td>ICS 214 Activity Log</td> </tr> <tr> <td style="text-align: center;"><input checked="" type="checkbox"/></td> <td>ICS 204 Division Assignment Lists</td> <td style="text-align: center;"><input checked="" type="checkbox"/></td> <td>ICS 206WF Medical Plan</td> <td style="text-align: center;"><input checked="" type="checkbox"/></td> <td>Medical Emergency Action Plan</td> </tr> <tr> <td style="text-align: center;"><input checked="" type="checkbox"/></td> <td>ICS 220 Air Operations Summary</td> <td></td> <td></td> <td></td> <td></td> </tr> </table>				<input checked="" type="checkbox"/>	ICS 203 Organization List	<input checked="" type="checkbox"/>	ICS 205 Communication Plan	<input checked="" type="checkbox"/>	Finance message	<input checked="" type="checkbox"/>	Spot Fire Weather Forecast	<input checked="" type="checkbox"/>	Safety Message	<input checked="" type="checkbox"/>	Incident Maps	<input checked="" type="checkbox"/>	Fire Behavior Forecast	<input checked="" type="checkbox"/>	Incident within an Incident	<input checked="" type="checkbox"/>	ICS 214 Activity Log	<input checked="" type="checkbox"/>	ICS 204 Division Assignment Lists	<input checked="" type="checkbox"/>	ICS 206WF Medical Plan	<input checked="" type="checkbox"/>	Medical Emergency Action Plan	<input checked="" type="checkbox"/>	ICS 220 Air Operations Summary				
<input checked="" type="checkbox"/>	ICS 203 Organization List	<input checked="" type="checkbox"/>	ICS 205 Communication Plan	<input checked="" type="checkbox"/>	Finance message																												
<input checked="" type="checkbox"/>	Spot Fire Weather Forecast	<input checked="" type="checkbox"/>	Safety Message	<input checked="" type="checkbox"/>	Incident Maps																												
<input checked="" type="checkbox"/>	Fire Behavior Forecast	<input checked="" type="checkbox"/>	Incident within an Incident	<input checked="" type="checkbox"/>	ICS 214 Activity Log																												
<input checked="" type="checkbox"/>	ICS 204 Division Assignment Lists	<input checked="" type="checkbox"/>	ICS 206WF Medical Plan	<input checked="" type="checkbox"/>	Medical Emergency Action Plan																												
<input checked="" type="checkbox"/>	ICS 220 Air Operations Summary																																
9. Prepared by (Planning Section Chief) 		9. Approved by (Incident Commander) 																															

ORGANIZATION ASSIGNMENT LIST		1. INCIDENT NAME DIXIE / JUMBO	2. DATE PREPARED 8/13/21	3. TIME PREPARED 2100
4. OPERATIONAL PERIOD: August 14, 2021 0600-2000				
5. INCIDENT COMMAND AND STAFF		9. OPERATIONS SECTION		
INCIDENT COMMANDER	Joe Sampson	PLANNING OPS: Ashley Sites		
INFORMATION OFFICER	Terina Goicoechea; Erik Broeder (T)	LINE OPS: Kevin Smith		
LIAISON OFFICER				
SAFETY OFFICER:	David Smith; Lee Hahnkamp (T); Leroy Holguin (T)			
6. AGENCY REPRESENTATIVES				
AGENCY	NAME			
NEZ PERCE CLEARWATER FOREST	AA: Cheryl Probert; Marty Mitzkus (T)			
	AREP: Zoanne Anderson			
	READ: Stephen Hampton; Erin Grinde; Doug Olive; Chris Noyes (T)			
IDAHO COUNTY	Sheriff Brian Hewson			
7. PLANNING SECTION		DIXIE		
CHIEF	Mark Glos	DIVISION/GROUP	C	Unstaffed
SITUATION UNIT	Jason Willoughby (T)	DIVISION/ GROUP	F	Matt Nelson
RESOURCES UNIT		DIVISION/ GROUP	T/X	Dave Wilkins; Drew Pattison (T)
DEMOB UNIT		DIVISION/GROUP		
FIRE BEHAVIOR:	Andrew Myhra (T)			
STRATEGIC OP PLANNER				
LONG TERM ANALYST				
INCIDENT METEROLOGIST				
COMPUTER SPECIALIST				
GIS SPECIALIST	Joel Harrison; Eyler White (T)			
TRAINING SPECIALIST				
8. LOGISTICS SECTION		JUMBO		
CHIEF	Peter Pappas; Kimberly Burch (T)	DIVISION /GROUP	Jumbo	Unstaffed
DEPUTY				
a. SUPPORT BRANCH				
SUPPLY UNIT	Dana Stone			
ORDERING MANAGER	Tim Stroope (T)			
FACILITIES UNIT	Tom Dauenhauer			
GROUND SUPPORT UNIT	Kyler McCarrel			
BASE CAMP MANAGER				
b. SERVICE BRANCH				
MEDICAL UNIT	Connie Weeks; Rosemary Myers (T)			
FOOD UNIT				
COMMUNICATION UNIT	Todd Orr; Chris Gentili; Jim Olivarez			
		b. BRANCH II- DIVISION/GROUPS		
		DIVISION/GROUP		
		DIVISION/GROUP		
		DIVISION/GROUP		
		c. BRANCH III- DIVISIONS/GROUPS		
		BRANCH DIRECTOR		
		DEPUTY		
		DIVISION/GROUP		
		DIVISION/GROUP		
		DIVISION/GROUP		
		DIVISION/GROUP		
		d. AIR OPERATIONS BRANCH		
		BRANCH DIRECTOR	Jeff Polack	
		AIR SUPPORT GROUP SUP		
		10. FINANCE/ADMINISTRATION SECTION		
		CHIEF	Wendy McCartney	
		COST UNIT	Joyce Anderson; Jane Taylor (T)	
		TIME UNIT	Sherise Foster (T)	
		EQUIPMENT TIME	Susan Ranger	
		INCIDENT BUSINESS SPECIALIST		
PREPARED BY: <u>Patty Bates</u>				

Spot Forecast for Dixie

DISCUSSION: Warm and dry high pressure will be present at the fire Saturday through Sunday. Northwest winds will develop each afternoon through sunset period, however a few gusts around 15 mph are expected Sunday late afternoon. Humidity will dry to the teens each afternoon. Saturday night humidity recovery will be very poor.

SATURDAY

- * Sky/Weather.....Mostly sunny. Haze.
- * CWR (> 0.10 Inch) ...0 percent.
- * LAL.....1.
- * Max Temperature....86-91.
- * Min Humidity.....13-18 percent.
- * Wind (20 ft)Variable 2-4 mph becoming northwest 6-9 mph in the afternoon.
- * Mixing Height.....Less than 100 ft agl increasing to 9500 ft agl in the afternoon.
- * Mixing Winds.....West 5 mph.
- * Haines Index.....4 low.
- * Precip Amount.....0.00 inches.

SATURDAY NIGHT

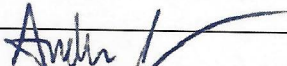
- * Sky/Weather.....Mostly clear. Haze.
- * CWR (> 0.10 Inch) ...0 percent.
- * LAL.....1.
- * Min Temperature....53-58.
- * Max Humidity.....48-53 percent.
- * Wind (20 ft)Northwest 5-8 mph in the evening becoming variable 2-4 mph.
- * Mixing Height.....9500 ft agl decreasing to less than 100 ft agl after sunset.
- * Mixing Winds.....West 5 mph.
- * Precip Amount.....0.00 inches.

SUNDAY

- * Sky/Weather.....Partly cloudy. Haze.
- * CWR (> 0.10 Inch) ...0 percent.
- * LAL.....1.
- * Max Temperature....86-91.
- * Min Humidity.....13-18 percent.
- * Wind (20 ft)Variable 2-4 mph becoming northwest 7-11 mph in the afternoon. Gusts to 15 mph in the late afternoon.
- * Mixing Height.....Less than 100 ft agl increasing to 10500 ft agl in the afternoon.
- * Mixing Winds.....West 10 mph.
- * Haines Index.....4 low.
- * Precip Amount.....0.00 inches.

Forecaster...Zumpfe, National Weather Service Missoula MT

FIRE BEHAVIOR FORECAST

FORECAST NUMBER: 35	TYPE OF FIRE: Wildland Fire
FIRE NAME: Dixie/Jumbo	OPERATIONAL PERIOD: Saturday, August 14th, 2021
DATE ISSUED: 8/13/21	TIME ISSUED: 1900
UNIT: USFS-ID-NCF	SIGNED: Andrew Myhra – FBAN(t) 

INPUTS

WEATHER SUMMARY: Hot and dry Saturday and Sunday. NW winds this afternoon (6-9mph). Low pressure arrives Monday with lower temps and higher RHs. Today: Highs – low 90s; Low RH – 13-18%; CWR 0%; Mostly sunny.

OUTPUTS

FIRE BEHAVIOR

GENERAL:

- Temperatures approach triple digits in the river canyon. Forecasted arrival of moderating weather conditions has been delayed through the weekend. At minimum, two more days of hot and dry conditions with potentially gusty winds in the afternoon.

Critical Thresholds identified on the ID-NCF "Uplands" Pocket Card....Any combination of the following:

- RH less than 20%
- Temps over 80 degrees
- Wind speed over 20mph
- 1000hr fuel moisture less than 10%

Today's Forecast:

- RH in the teens
- Temps in the low 90s
- Afternoon winds 6-9 mph from the NW
- 1000hr fuel moisture (FM-G) forecast 10%

- Fire danger observed for yesterday was High-Very High and indicates the potential for significant fire growth
- Heat is scarce on the fire perimeter, but persistent areas could be positioned to respond to predicted weather conditions through Sunday
- Hot and dry weather this weekend will create potential for increased fire activity, especially if conditions become windy. Pay attention for "Hot, Dry, Windy" conditions.
- Haze is likely to increase over the fire today as westerly winds transport smoke into the region
- Fuel moisture conditions are at or above critical thresholds
 - ERCs are at the 93rd percentile
 - Live fuel moistures continue to cure naturally with seasonal trends for late summer

SPECIFIC:

Division C: Minimal fire activity. Some heat persists near the crest of Mammoth Mountain.

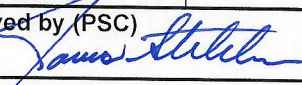
Division F: Isolated heat remains on the north aspect of Blowout Ridge but is not actively spreading.

Division T/X: Active fire persists south of the burn scar in the Noble Creek drainage and NW of Mallard Creek campground. Watch for increased activity, especially if smoke clears and strong or gusty diurnal winds develop.

Jumbo Fire: Isolated smoke along the SW corner of the fire. Continue to monitor by air.

AIR OPERATIONS: Smoke impacts are likely to persist through the weekend as the high pressure system breaks down over the Northern Rockies and ensuing westerly winds bring Pacific Northwest and British Columbia smoke into the region.

FIRE BEHAVIOR SAFETY: Weather systems and models can sometimes produce unreliable results. A predicted wet cold front could develop as a dry cold front and produce strong erratic winds and extremely low RHs. Avoid relying solely on forecast weather. Instead make alternate plans for worst case scenario weather conditions. Topography changes very slowly, fuel conditions react gradually to changing weather/climate, but weather conditions can change instantaneously without warning.

ASSIGNMENT LIST			1.Branch DIXIE		2. Division/Group DIV F		
3. Incident Name DIXIE / JUMBO			4. Operational Period: DAY Date: August 14, 2021 Time: 0600-2000				
5. Operations Personnel							
Operations Chief	Ashley Sites; Kevin Smith		Division/Group Supervisor		Matt Nelson		
Branch Director			Air Operations Director Air Attack Supervisor		Jeff Polack		
6. Resources Assigned This Period							
Strike Team/Task Force/ Resource Designator	Last Shift	Leader	No. Pers.	EMT	Trans. Needed	Drop Off PT./Time	Pick Up PT./Time
E-87 ENG6 DB Jet Engine	8/22	Greg Racicot	3		N	ICP/0600	ICP/2000
E-176 ENG6 Verde Valley	8/23	Tucker Ihrman	3	X	N	ICP/0600	ICP/2000
E-15 WTS2 Lance LLC	8/22	Lance Raff	1		N	ICP/0600	ICP/2000
E-101 WTS2 Big Cedar	8/19	Darryl Baker	1		N	ICP/0600	ICP/2000
E-132 WTS2 Moranville Trucking	8/20	Mark Lock	1		N	ICP/0600	ICP/2000
E-206 WTS2 Lyons 06	8/26	Tom Roy	1		N	ICP/0600	ICP/2000
E-207 WTS2 Lyons 03	8/26	Larry Lyons	1		N	ICP/0600	ICP/2000
E-18 Log Loader Cox	8/29	Rick Cox	2		N	ICP/0600	ICP/2000
E-200 Log Truck Cox	8/22	Stewart Wilson	1		N	ICP/0600	ICP/2000
E-201 Log Truck Cox	8/22	Darrel Cox	1		N	ICP/0600	ICP/2000
E-205 Log Truck Gregg Trucking	8/27	Marvin Gregg	1		N	ICP/0600	ICP/2000
E-208 Log Truck Lee's Trucks	8/26	Brandon Eddins	1		N	ICP/0600	ICP/2000
E-213 Log Truck Lee's Trucks	8/25	Tony Osborn	1		N	ICP/0600	ICP/2000
E-202 Log Loader Craig Mountain	8/23	Curtis Click	1		N	ICP/0600	ICP/2000
E-102 Processer Anderson	8/20	Alex Mattson; Scott Schucher	2		N	ICP/0600	ICP/2000
E-204 CHP3 Chipper	8/24	Galvin Julian	1		N	ICP/1000	ICP/2000
O-224 HEQB Tom Franklin	8/14		1		N	ICP/0600	ICP/2000
O-287.8 SOF2 Lee Hahnkamp (T)	8/14		1		N	ICP/0600	ICP/2000
E-128 Ambo 1 Wilderness Medics	8/20	Eric Siedband; Joshua Lowe	2	X	N	DP7	DP7
7. Control Operations							
<p>Task: Maintain structure protection at Dixie and Comstock. Finish chipping along the Dixie Stage Road and the road to Dixie Guard Station. Remove logs and stage at Dixie Summit.</p> <p>Purpose: Protect values at risk (Dixie, Black Diamond and Comstock). Maintain ingress/egress. Mitigate impacts from suppression actions.</p> <p>End State: Access is maintained to the Dixie/Comstock area and values at risk are protected.</p>							
8. Special Instructions:							
Backhaul equipment and supply							
9. Division/Group Communication Summary							
Function	Frequency - RX	Frequency - TX	Tone	Channel	Comments		
Command (Anderson)	173.1375	166.2000	107.2	7	Repeater assignments are suggestions. If another repeater works better, use it.		
Command (Oregon Butte)	173.1375	166.2000	127.3	8			
Command 9	169.8125	164.6750	110.9	9			
Tactical	168.6000	168.6000	110.9	3			
Air to Ground	168.4000	168.4000		14			
Prepared by (RESL) Patty Bates		Approved by (PSC) 			Date August 13, 2021		
					Time 2100		

ASSIGNMENT LIST

1.Branch

Dixie

2. Division/Group

DIV T/X

3. Incident Name

DIXIE / JUMBO

4. Operational Period: DAY

Date: August 14, 2021

Time: 0600-2000

5.

Operations Personnel

Operations Chief	Ashley Sites; Kevin Smith	Division/Group Supervisor	Dave Wilkins; Drew Pattison (T)
Branch Director		Air Operations Director Air Attack Supervisor	Jeff Polack

6.

Resources Assigned This Period

Strike Team/Task Force/ Resource Designator	Last Shift	Leader	No. Pers.	EMT	Trans. Needed	Drop Off PT./Time	Pick Up PT./Time
O-397 WFM Saguaro	8/22	Kress Sanders	9		N	ICP/0600	ICP/2000
O-404 WFM Teton	8/23	Eric Hawes	10	X	N	ICP/0600	ICP/2000
E-4 ENG6 Metal Works	8/14	Isaach Cordova	3		N	ICP/0600	ICP/2000
E-85 ENG6 Cougar	8/16	Cathy Reilly	3		N	ICP/0600	ICP/2000
E-149 ENG6 Griffith	8/22	William Griffith	3		N	ICP/0600	ICP/2000
E-177 ENG6 Curtis Engine	8/22	Charles Curtis	3		N	ICP/0600	ICP/2000
E-14 WTS2 Smith	8/24	Spencer Gardner	1		N	ICP/0600	ICP/2000
E-16 WTS2 Flash EX	8/18	Jesi Eckel	1		N	ICP/0600	ICP/2000
E-209 Excavator Lee's Trucks	8/26	Lee Eddins	1		N	ICP/0600	ICP/2000
O-397.2 TFLD Jay Yancik	8/23		1		N	ICP/0600	ICP/2000
O-293 HEQB Ryan Ricktenwald (T)	8/19		1		N	ICP/0600	ICP/2000
O-415 Faller	8/24	Fausto Rivera	1		N	ICP/0600	ICP/2000
O-287.8 SOF2 Lee Hahnkamp (T)	8/14		1		N	ICP/0600	ICP/2000
O-371 EMPF Chris Jacks	8/22		1	X	N	Mallard Creek	Mallard Creek
O-333 SOFR Willie Cirone	8/17		1		N	ICP/0600	ICP/2000
E-128 Ambo 1 Wilderness Medics	8/20	Eric Siedband; Joshua Lowe	2	X	N	DP7	DP7

7. Control Operations

Task: Line and mop up spots within the "crab claw. Maintain hose lays and sprinklers into lower Mallard Creek. Haul logs.

Purpose: Keep fire from crossing Red River drainage and point protect values at risk.

End State: Slop over/spot fires are contained and the main fire is held to the south of Dixie Road. Access along Jack Mountain Road and Forest Road 421 to Whitewater Ranch remains open.

8. Special Instructions:

Backhaul equipment and supplies.

9.

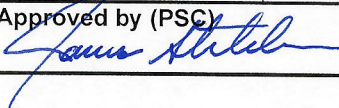
Division/Group Communication Summary

Function	Frequency - RX	Frequency - TX	Tone	Channel	Comments
Command (Anderson)	173.1375	166.2000	107.2	7	Repeater assignments are suggestions. If another repeater works better, use it.
Command (Oregon Butte)	173.1375	166.2000	127.3	8	
Command 9	169.8125	164.6750	110.9	9	
Tactical (Div T)	168.2000	168.2000	110.9	2	
Tactical (Div X)	166.7750	166.7750	110.9	6	
Air to Ground CMD	168.4000	168.4000		14	

Prepared by (RESL)

Patty Bates

Approved by (PSC)



Date

August 13, 2021

Time

2100

ICS-220 AIR OPERATIONS SUMMARY

Prepared By: Jeff Polack


08/13/2021

Prepared Time: 2000

1. INCIDENT NAME: Dixie / Jumbo Fires	2. OPS PERIOD DATE: 08/14/2021	START TIME: 0800	END TIME: 2000	SUNRISE 0540	SUNSET: 1951	Pumpkin: for returning to base only
3. REMARKS (Safety Notes, Hazards, Air Operations Special Equipment, etc.): Assess mission complexity and the Benefit/Risk of the mission. Ensure visibility and winds are adequate to safely conduct flight operations. Ensure safe vertical & horizontal separation between aircraft in smokey conditions. Call in and out of the dips. Beware of general aviation in Salmon River corridor. Smoky conditions can hamper aviation operations, adhere to visibility limitations, and DO NOT be pressured into accepting a mission that you know or feel is unsafe! <i>Terminate operational rotorwing no later than sunset.</i>						
4. READY ALERT AIRCRAFT: H.B.205PT, Payette S.H. Contact GVC with mission details. Hospitals: -Syringa General land Grangeville at GIC to meet ambulance. -St. Joseph's Regional 46° 25.02 'x 117° 01.45' Rooftop T-III Pad.			5. TFR's: Dixie Fire: 1/4070 Freq:124.2500 Polygon, Altitude: Surface to 10,500 MSL			

6. POSITION	NAME	PHONE #	7. FREQUENCIES	AM	FM	8. Aircraft Ordering Protocol
Forest Aviation Officer	Willy Acton	208-507-0942	Dixie A/G		168.4000	Air Attack Platforms: Located GIC
NCF Dispatch	Aircraft Desk	208-983-6803	Nez-Clear A/G#17		167.9875	AIRTANKERS/SCOOPERS Order thru Air Attack/Line Operation
			Nez-Clear A/G #45		167.6500	SEATS Order thru Air Attack/Line Operations
AOBD	Jeff Polack	208-816-3447	A/A Helicopters A/A F/W (TFR)	126.3000 124.2500		AIR ATTACK Order thru Line Operations to Helibase to Aircraft Desk in Grangeville
ASGS	XXXX	XXX-XXX-XXX	Command from Mullins HB CMD-7		173.1375Rx 166.2000Tx 107.2TT	Helicopters Order thru Division Supervisor to Helibase. Additional helicopters available through Grangeville.
Mullins HLB	Unstaffed	208-842-2671 (landline)	EMS 2 (Ch. 15 in I-205)		155.2800Rx 155.2800Tx	Email Dixie Aircraft Costs Daily to: 2021.dixie.finance@firenet.gov
HMGB Tolo Helibase	John Abernathy	720-837-9591	National Flight Follow		168.6500 110.9 TX/RX	
Air Attack	TBD	XXX-XXX-XXXX	AIR GUARD		168.6250 110.9 TX/RX	
NOTES: Mullins HLB: 45° 43.3' x 115° 22.2' Elevation: 4299' Tolo HLB: 45° 55.003' x 116° 11.446' Elevation: 3343' MISSIONS: Repeater Retrieval, Recons, Buckets and Cargo Support Local I.A. whenever possible.						
9. HELICOPTERS						

CALL SIGN / FAA N#	TY	MAKE/ MODEL	BASE	Start	Avail	REMARKS	Avail	Start	BASE	MAKE/ MODEL	TY	CALL SIGN / FAA N#	REMARKS
303AJ	1	CH-47D	Tolo	0900	0930	Buckets	3181F	2	UH-1F	GIC	0800	0830	Buckets, external cargo *Forest prepo resource*
49CU	1	CH-47D	GIC	0900	0930	Buckets	221JB	3	B-407	Mullins	0700	0800	Buckets, Cargo, PAX

INCIDENT RADIO COMMUNICATIONS PLAN I-205				1. INCIDENT NAME		2. DATE/TIME PREPARED		3. OPERATIONAL PERIOD DATE/TIME			
				DIXIE		8/13/2021		8/14/2021 0600 to 2000			
4. BASIC RADIO CHANNEL UTILIZATION											
Ch #	Function	Channel Name	Assignment	RX Freq	NW	RX Tone/NAC	TX Freq	NW	TX Tone/NAC	Mode Analog (A) Digital (D) Mixed (M)	Remarks
1	TACTICAL	TAC 1		168.0500	N	110.9	168.0500	N	110.9	A	ICP to HELIBASE
2	TACTICAL	TAC 2	DIV T	168.2000	N	110.9	168.2000	N	110.9	A	DIVISION TANGO
3	TACTICAL	TAC 3	DIV F	168.6000	N	110.9	168.6000	N	110.9	A	DIVISION FOXTROT
4	TACTICAL	TAC 4		168.2500	N	110.9	168.2500	N	110.9	A	
5	TACTICAL	TAC 5	DIV C	166.7250	N	110.9	166.7250	N	110.9	A	DIVISION CHARLIE
6	TACTICAL	TAC 6	DIV X	166.7750	N	110.9	166.7750	N	110.9	A	DIVISION XRAY
7	COMMAND	ANDERSON	ALL DIV	173.1375	N		166.2000	N	107.2	A	FROM ICP to LINE, NEZ EAST RPTR
8	COMMAND	OREBUTTE	ALL DIV	173.1375	N		166.2000	N	127.3	A	JUMBO, DIV F NEZ EAST RPTR
9	COMMAND	CMD 9	ALL DIV	169.8125	N	110.9	164.6750	N	110.9	A	BOSTON MOUNTAIN ** NIFC **
10	COMMAND	IRONMTN	ALL DIV	173.1375	N		166.2000	N	162.2	A	NEZ EAST REPEATER
11	COMMAND	SHEEPEATER	ALL DIV	169.9000	N		164.7875	N	156.7	A	PAYETTE EAST RPT
12	AIR TO GROUND	A/G 17	ALL DIV	167.9875	N	0.0	167.9875	N	0.0	A	NCF A/G 17
13	AIR TO GROUND	A/G 45	ALL DIV	167.6500	N	0.0	167.6500	N	0.0	A	NCF A/G 45
14	AIR TO GROUND	DIXIE A/G	ALL DIV	168.4000	N	0.0	168.4000	N	0.0	A	A/G COMMAND DIXIE
15	AIR AMBULANCE	EMS 2	EMERGENCY	155.2800	N	0.0	155.2800	N	0.0	A	STATE COMM/AIR AMBULANCE
16	AIR GUARD	AIRGUARD	EMERGENCY	168.6250	N	0.0	168.6250	N	0.0	A	EMERGENCY USE ONLY
5. Special Instructions:				CMD 9 **** IS NOT LINKED IN **** Stand alone RPTR for DIV TX Operations, if IWI occurs please use Forest Rptr to Contac Dixie ICP							
6. I-205 Prepared By: Communications Unit Leader				Name:				TODD ORR COML		Signature: 	



Safety Message

Major Hazards and Risks: Transition Risk Factors

Factors for increased risks to fireline personnel during transition periods include:

- No, or poor, briefing of incoming personnel.
- Lack of fire weather and behavior information, both forecasted or observed.
- Communications: face-to-face briefings may not be possible and radio frequencies may be overextended and/or changing due to increased demands on the system.
- Location of safety zones and escape routes may not be known and communicated to all resources.
- Not all resources know who is in command.

Mitigation Actions to Take

- Lookouts: Post and maintain your own lookouts
- Communications: Maintain existing communications with your own and adjacent resources, as well as your original supervisor, while your developing communications with incoming adjacent resources and your new supervisor.
- Escape routes and safety zones: Identify escape routes and assure incoming resources are aware of their locations; be aware that your original escape routes and safety zones may no longer be accessible due to changing fire behavior or your increased distance from them.
- Transition at morning briefing.

Be Mindful About Safety in all Your Actions

Northern Rockies Team 5

DIXIE/JUMBO FIRE

Incident within an Incident Emergency Action Plan

In the case of a serious accident requiring patient transport to a medical facility:

- The closest ranking Operations Leader (i.e., Division Supervisor) at the accident scene will take charge and be the Point of Contact (POC).
- Use the 8-line protocol to assess patient; if patient evaluation is either red or yellow use **Dixie Fire Command Frequency Identified for the Division the IWI is occurring on**. Air extraction resources will use Air to Ground tactical or Air Ambulance EMS2.
- If incident should occur outside the Dixie/Jumbo Fires contact 911 and Dixie Communications on Command frequency for monitoring and support and to notify whether patient is incident personnel or civilian.
- Patients evaluated as Green notify nearest supervisor of the location of the incident and assigned EMT to determine treatment and transport to Medical Unit.
- Upon notification of a serious accident, the Following will report to the ICP Communications trailer: Incident Commander, Safety Officer, Operations Section Chief (Planning OPS), and Medical Unit Leader to monitor IWI. Safety Officer will notify Finance and/or Comp Claims of the IWI.
- Incident radio traffic will be monitored from 0500 to 2200 every day on Command at ICP.

Approved by: /s/ Joe Sampson

Incident Commander

Date: 08/01/2021

1. Incident/Project Name		2. Operational Period: August 14, 2021 0600-2000			
Dixie/Jumbo Fires		Date/Time 08/13/21 1500			
3. Ambulance Services					
Ambulance	Complete Address	Phone & EMS Frequency	Advanced Life Support (ALS) Yes No		
Elk City Ambulance	Elk City, Idaho	911 155.280			X
Wilderness Medics	Red River Base Camp	Command	X		
4. Air Ambulance Services					
Name	Phone	Type of Aircraft & Capability			
Life Flight Network	911 155.340 tan	Paramedics/Flight Nurse/Night vision			
2 Bear Air	911 155.340 tan	Hoist/Paramedics			
5. Hospitals					
Name Complete Address	GPS Datum – WGS 84 Coordinate Standard Degrees Decimal Minutes DD° MM.MMM' N - Lat DD° MM.MMM' W - Long	Travel Time Air Gnd	Phone	Helipad Yes No	Level of Care Facility
Syringa General Hospital 607 W. Main Grangeville, ID 83530	Lat: Long VHF: 155.280 white	30 Min	2 Hrs 208-983-5919 ER	<input type="checkbox"/> <input checked="" type="checkbox"/>	Critical Access Land at Airport
St. Luke's Medical Center McCall, Idaho	Lat: N 44 53.22 Long W 116 06.5 VHF: 155.280 white	45 Min	208-634-2221	 X	Critical Access Land at Airport
St. Joseph's Regional Medical Center 415 6 th St. Lewiston, Idaho 83501	Lat: N 46 25.02 Long W 117 01.45 VHF: 155.280 white	45 Min	3 Hrs 208-799-5799 ER	X	Level 3
Community Medical Center 2827 Ft. Missoula Rd., Missoula, MT	Lat: N 46 50.909 Long W 114 02.866 VHF: 155.280 white	70 Min	406-327-4171 ER	X	Roof Top Pad Level 2
					Ground Level Pad
6.					
Division Branch Group					
All Divisions:	Crew Supplies:	Crew EMTs:			
DIV F/T DP 7	ALS Ambulance	Wilderness Medics (Ambo 1) DP 7			
MALLARD CREEK AREA	ALS pack	Chris Jacks - EMPF			
Prepared by: Connie Weeks	MEDL	Approved by: Dave Smith			

YOUR DIXIE FINANCE IS HERE FOR YOU!

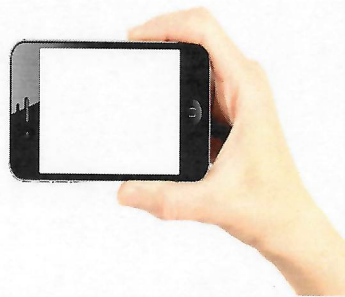
Need to submit your approved CTR or shift ticket?

How about your resource order?

AD hiring paperwork?

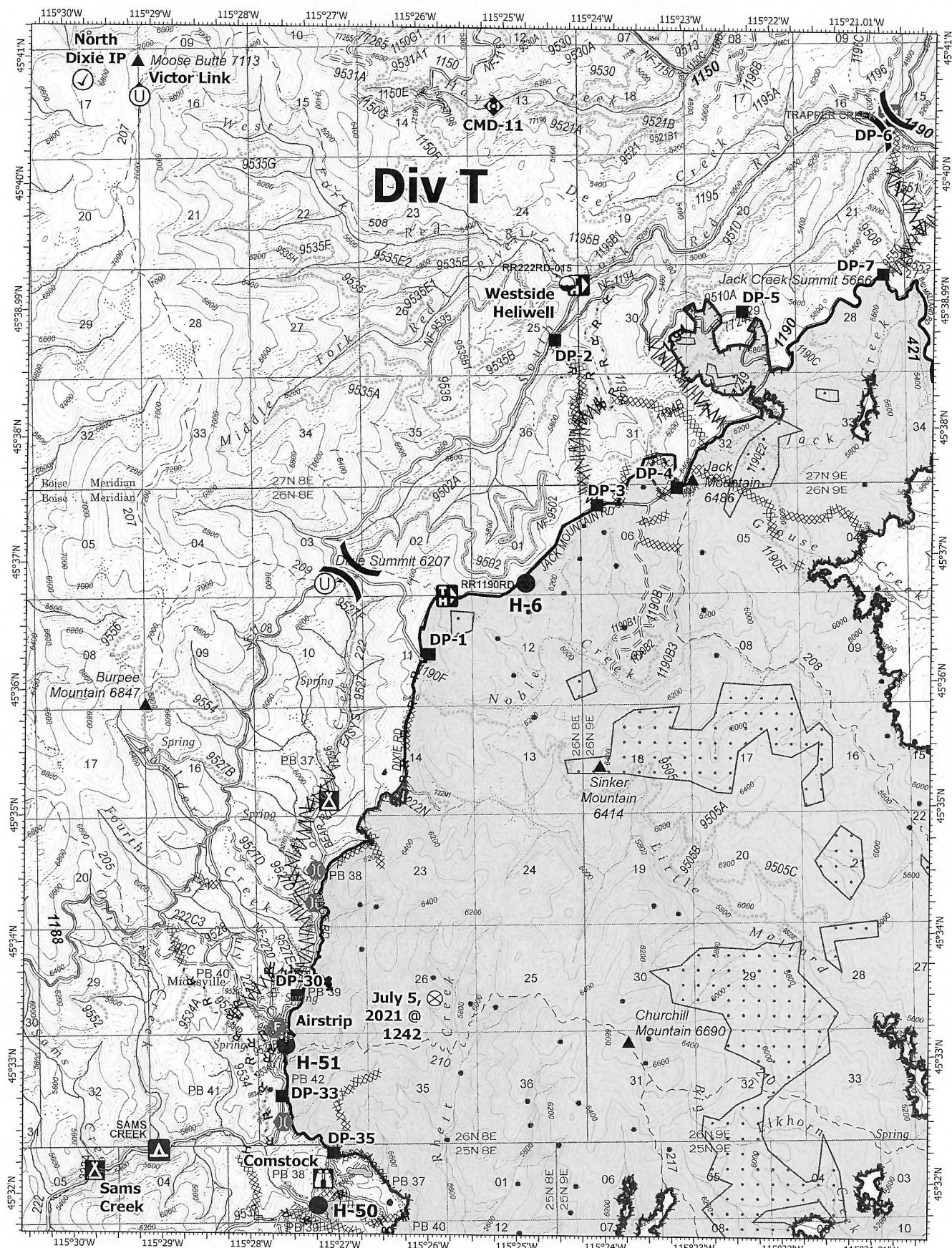
IT'S EASY TO DO!

Use your cell phone to take a picture of the
document you need to send



And email it to:

2021.dixie.finance@firenet.gov



IAP Map

Dixie
ID-NCF-000448
08/14/2021

43,230 acres at 08/12/2021 00:45 PDT
Acres from IR and GPS

0 0.5 1 Miles

Check Point

Dip Site

Helispot

Unimproved Landing Area

Division Break

Drop Point

Camp

Lookout

Fire Origin

Fire Station

Bridge

Mobile Weather Unit

Repeater

Wildfire Daily Fire Perimeter

Completed Dozer Line

Completed Fuel Break

Completed Hand Line

Completed Road as Line

Planned Dozer Line

Planned Mixed Construction Line

Planned Road as Line

Access or Improved Road

Other

Fire Edge

Contained Line

IR Isolated Heat Source

IR Heat Perimeter

IR Scattered Heat

North

Div JUMBO

Div 1

Div 2

Div 3

Div 4

Div 5

Div C

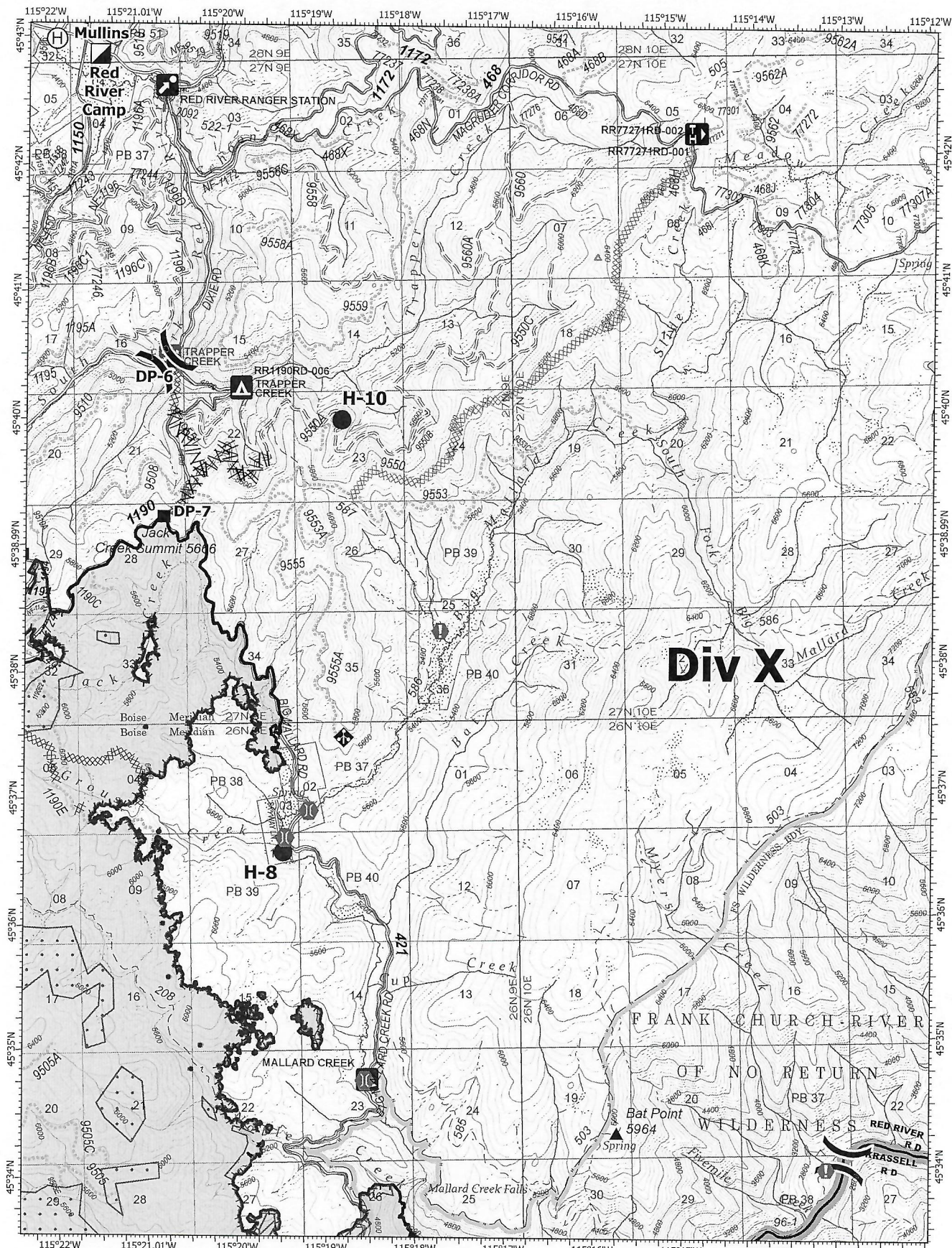
Div X

8/13/2021 1849

1:50,000

North American 1983 Datum, Lat/Long Grid





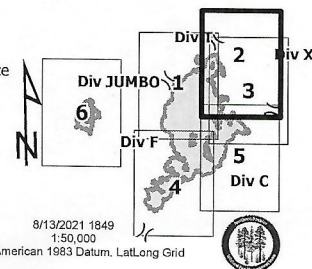
IAP Map

Dixie
ID-NCF-000448
08/14/2021

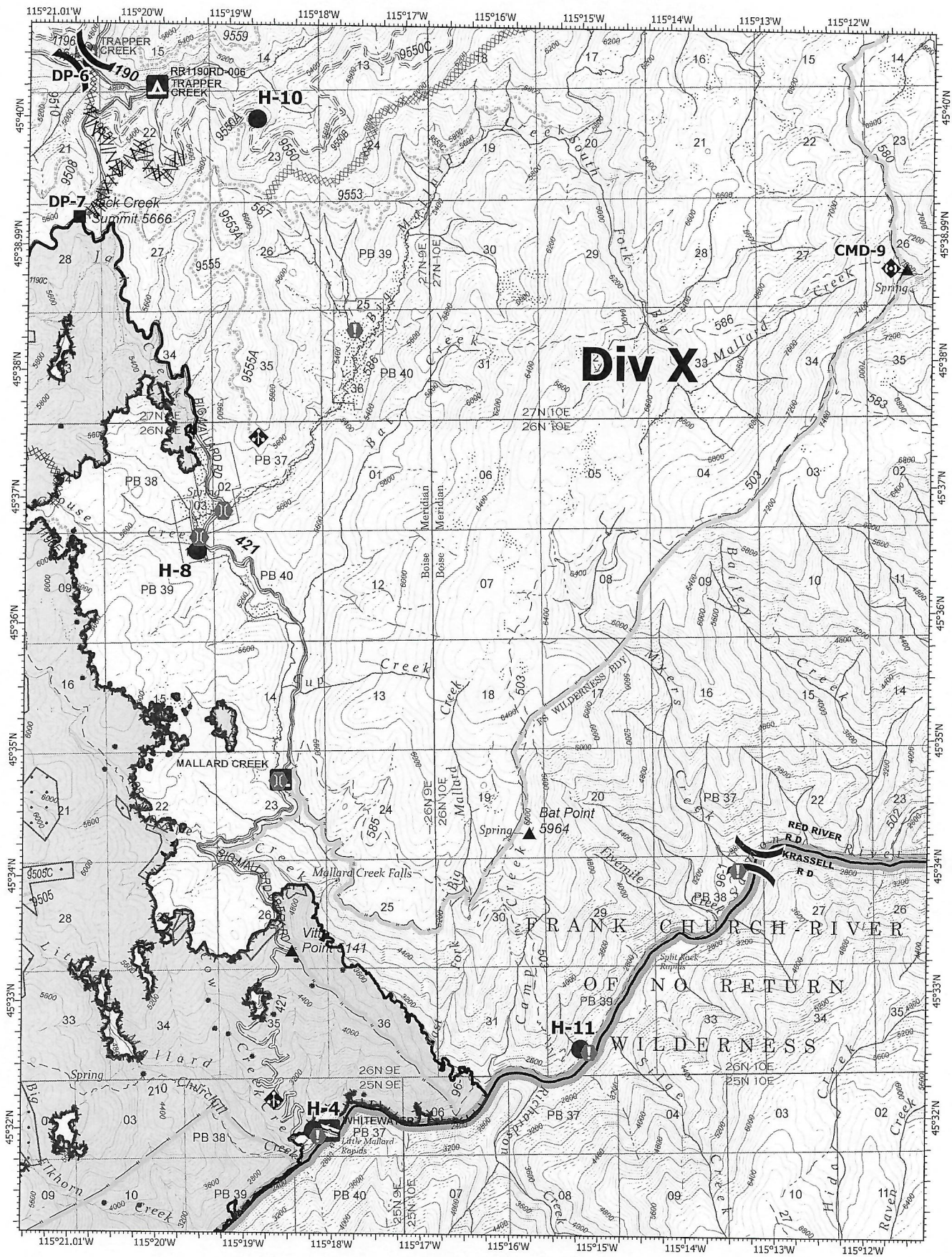
43,230 acres at 08/12/2021 00:45 PDT
Acres from IR and GPS

0 0.5 1
Miles

- | | | |
|-------------------------|---------------------------------|---------------------------|
| ● Helispot | ◆ Mobile Weather Unit | ▬ Fire Edge |
| ⊕ Helibase | ▬ Wildfire Daily Fire Perimeter | ▬ Contained Line |
|) Division Break | ▬ Completed Dozer Line | ● IR Isolated Heat Source |
| ▬ Incident Command Post | ▬ Completed Fuel Break | ▬ IR Heat Perimeter |
| ▬ Drop Point | ▬ Planned Dozer Line | ▬ IR Intense Heat |
| ⊕ Value at Risk | R Planned Road as Line | ▬ IR Scattered Heat |
| ⊕ Bridge | ▬ Highlighted Feature | |



8/13/2021 1949
1:50,000
North American 1983 Datum, Lat/Long Grid



IAP Map

Dixie
ID-NCF-000448
08/14/2021

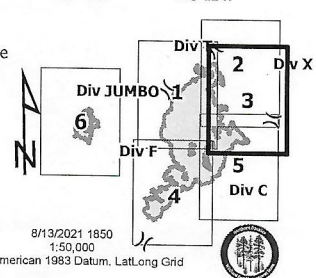
43,230 acres at 08/12/2021 00:45 PDT
Acres from IR and GPS

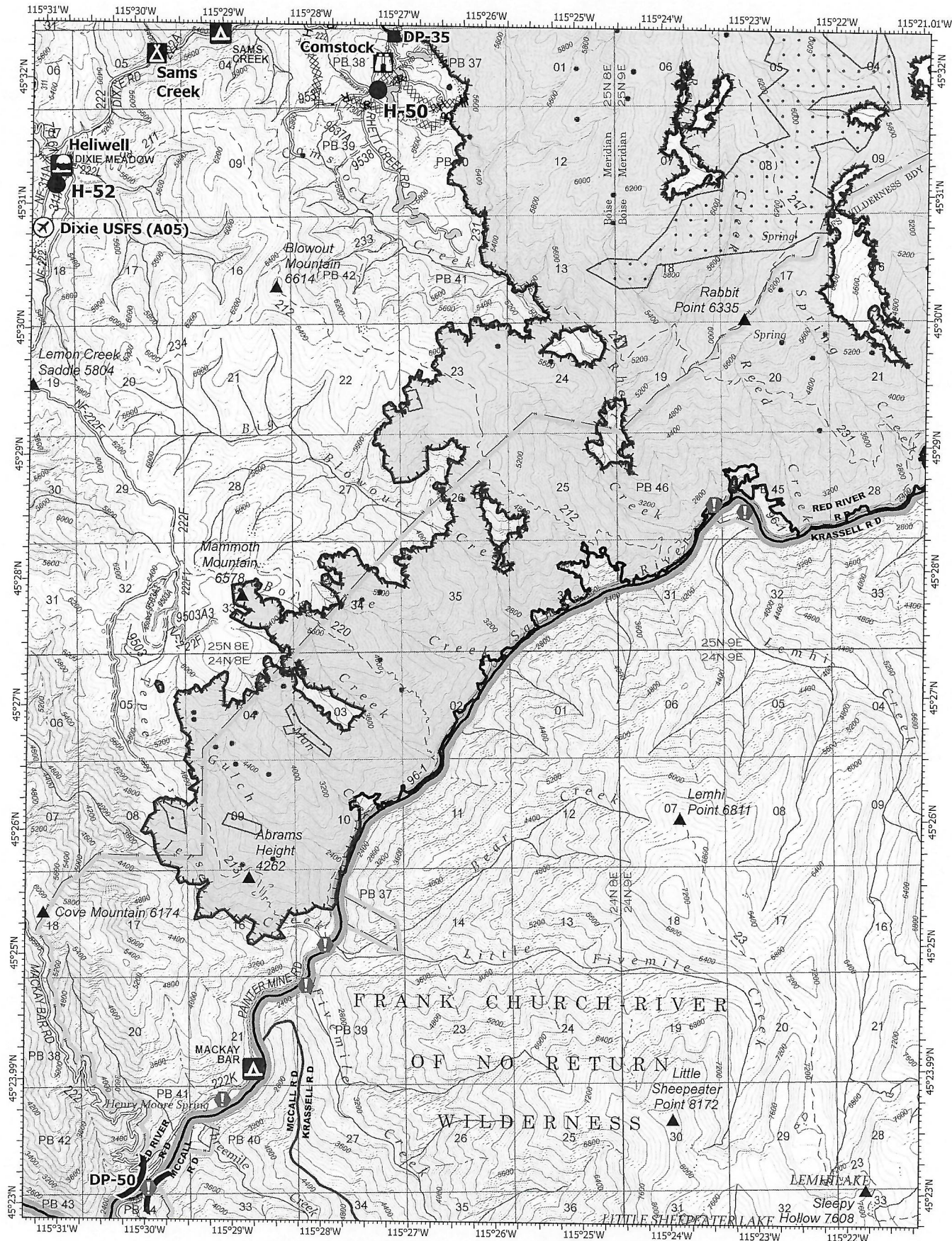
0 0.5 1
Miles

- Helispot
- () Division Break
- Drop Point
- ⊕ Value at Risk
- ⌵ Bridge
- ⊕ Mobile Weather Unit
- ⊕ Repeater

- ▬ Wildfire Daily Fire Perimeter
- ▬ Completed Dozer Line
- M Completed Fuel Break
- ▬ Planned Dozer Line
- R Planned Road as Line
- Highlighted Feature
- ▬ Fire Edge

- ▬ Contained Line
- ▬ IR Isolated Heat Source
- ▬ IR Heat Perimeter
- ▬ IR Intense Heat
- ▬ IR Scattered Heat





IAP Map

Dixie
ID-NCF-000448
08/14/2021

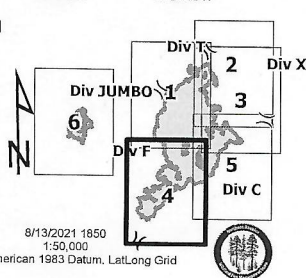
43,230 acres at 08/12/2021 00:45 PDT
Acres from IR and GPS

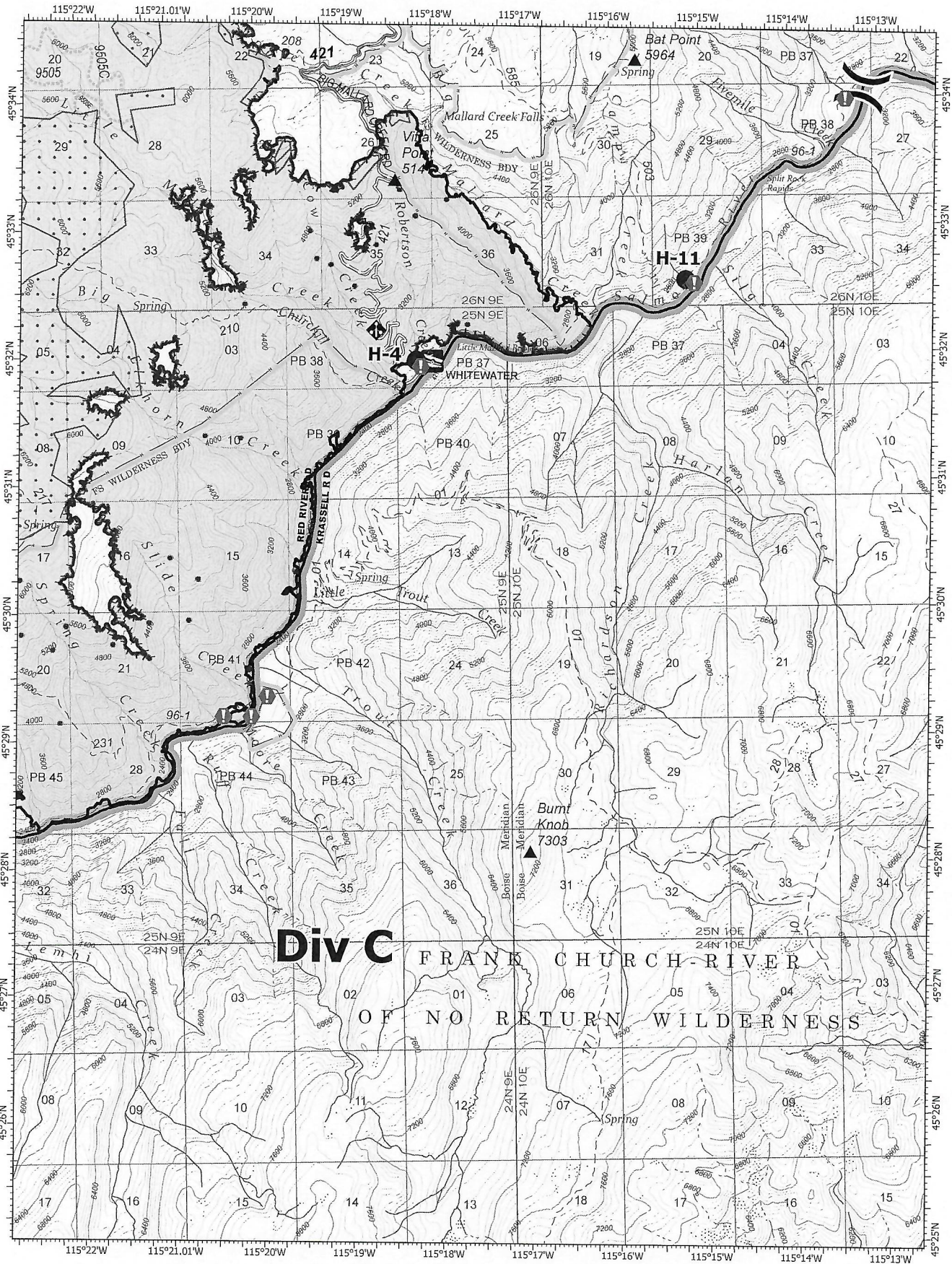
0 0.5 1
Miles

- Airstrip or Airport
- Dip Site
- Helispot
- Division Break
- Drop Point
- Camp
- Lookout

- Value at Risk
- Bridge
- Repeater
- Wildfire Daily Fire Perimeter
- Completed Dozer Line
- Completed Hand Line
- Completed Road as Line

- Access or Improved Road
- Fire Edge
- Contained Line
- IR Isolated Heat Source
- IR Heat Perimeter
- IR Intense Heat
- IR Scattered Heat

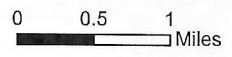




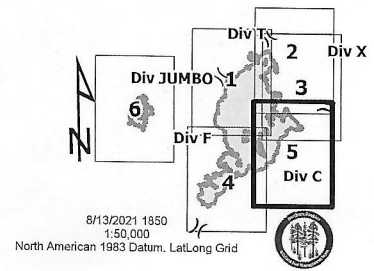
IAP Map

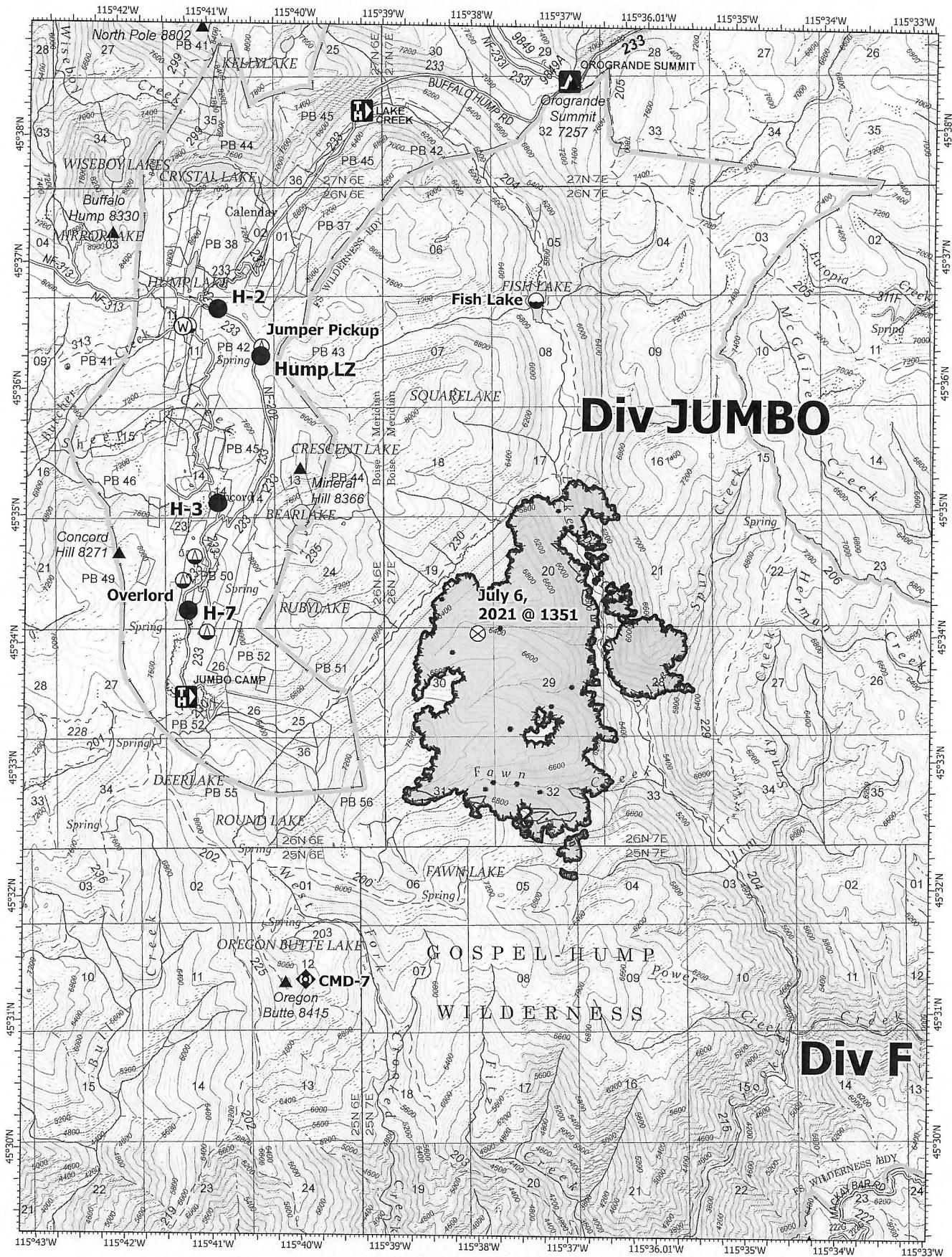
Dixie
ID-NCF-000448
08/14/2021

43,230 acres at 08/12/2021 00:45 PDT
Acres from IR and GPS



- Helispot
-)(Division Break
- Ⓢ Value at Risk
- Ⓜ Bridge
- Ⓜ Mobile Weather Unit
- ▭ Wildfire Daily Fire Perimeter
- ▭ Highlighted Feature
- Fire Edge
- Contained Line
- IR Isolated Heat Source
- ▭ IR Heat Perimeter
- ▭ IR Intense Heat
- ▭ IR Scattered Heat





IAP Map

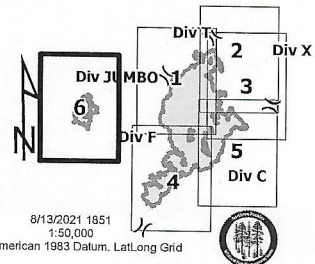
Jumbo
ID-NCF-000463
08/14/2021

2,682 acres at 08/12/2021 00:45 PDT
Acres from IR and GPS

0 0.5 1
Miles

- Dip Site
- Helispot
- Sling Site
- Fire Origin
- Repeater
- Water Source

- Wildfire Daily Fire Perimeter
- Fire Edge
- IR Isolated Heat Source
- IR Heat Perimeter
- IR Intense Heat
- IR Scattered Heat



8/13/2021 1851
1:50,000
North American 1983 Datum, Lat/Long Grid

Medical Incident Report – 8 Line

FOR A NON-EMERGENCY INCIDENT, WORK THROUGH CHAIN OF COMMAND TO REPORT AND TRANSPORT INJURED PERSONNEL AS NECESSARY.

FOR A MEDICAL EMERGENCY: IDENTIFY ON SCENE INCIDENT COMMANDER BY NAME AND POSITION AND ANNOUNCE "MEDICAL EMERGENCY" TO INITIATE RESPONSE FROM IMT COMMUNICATIONS/DISPATCH.

Use the following items to communicate situation to communications/dispatch.

1. CONTACT COMMUNICATIONS / DISPATCH (Verify correct frequency prior to starting report)

Ex: "Communications, Div. Alpha. Stand-by for Emergency Traffic."

2. INCIDENT STATUS: Provide incident summary (including number of patients) and command structure.

Ex: "Communications, I have a Red priority patient, unconscious, struck by a falling tree. Requesting air ambulance to Forest Road 1 at (Lat./Long.) This will be the Trout Meadow Medical, IC is TFLD Jones. EMT Smith is providing medical care."

Severity of Emergency / Transport Priority	<input type="checkbox"/> RED / PRIORITY 1 Life or limb threatening injury or illness. Evacuation need is IMMEDIATE Ex: Unconscious, difficulty breathing, bleeding severely, 2° – 3° burns more than 4 palm sizes, heat stroke, disoriented. <input type="checkbox"/> YELLOW / PRIORITY 2 Serious Injury or illness. Evacuation may be DELAYED if necessary. Ex: Significant trauma, unable to walk, 2° – 3° burns not more than 1-3 palm sizes. <input type="checkbox"/> GREEN / PRIORITY 3 Minor Injury or illness. Non-Emergency transport Ex: Sprains, strains, minor heat-related illness.	
Nature of Injury or Illness & Mechanism of Injury		Brief Summary of Injury or Illness (Ex: Unconscious, Struck by Falling Tree)
Transport Request		Air Ambulance / Short Haul/Hoist Ground Ambulance / Other
Patient Location		Descriptive Location & Lat. / Long. (WGS84)
Incident Name		Geographic Name + "Medical" (Ex: Trout Meadow Medical)
On-Scene Incident Commander		Name of on-scene IC of Incident within an Incident (Ex: TFLD Jones)
Patient Care		Name of Care Provider (Ex: EMT Smith)

3. INITIAL PATIENT ASSESSMENT: Complete this section for each patient as applicable (start with the most severe patient)

Patient Assessment:

See IRPG page 106

Treatment:

4. TRANSPORT PLAN:

Evacuation Location (if different): (Descriptive Location (drop point, intersection, etc.) or Lat. / Long.) Patient's ETA to Evacuation Location:

Helispot / Extraction Site Size and Hazards:

5. ADDITIONAL RESOURCES / EQUIPMENT NEEDS:

Example: Paramedic/EMT, Crews, Immobilization Devices, AED, Oxygen, Trauma Bag, IV/Fluid(s), Splints, Rope rescue, Wheeled litter, HAZMAT, Extrication

6. COMMUNICATIONS: Identify State Air/Ground EMS Frequencies and Hospital Contacts as applicable

Function	Channel Name/Number	Receive (RX)	Tone/NAC *	Transmit (TX)	Tone/NAC *
COMMAND					
AIR-TO-GRND					
TACTICAL					

7. CONTINGENCY: Considerations: If primary options fail, what actions can be implemented in conjunction with primary evacuation method? Be thinking ahead.

8. ADDITIONAL INFORMATION: Updates/Changes, etc.