

# Dixie Fire

ID-NFC-000448

P1N402 (0117)



# Jumbo Fire

ID-NCF-000463


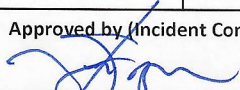
P1EKT5 (0117)

## INCIDENT ACTION PLAN

**Tuesday, August 3, 2021**



Incident Link (IAPs, Maps, documents)

<b>INCIDENT OBJECTIVES</b>	<b>1. Incident Name</b> <b>DIXIE / JUMBO</b>	<b>2. Date</b> <b>August 2, 2021</b>	<b>3. Time</b> <b>2100</b>
<b>4. Operational Period: August 3, 2021 DAY OPERATIONS 0600 - 2000</b>			
<b>Incident Objectives</b> <ol style="list-style-type: none"> <li>1. The Dixie and Jumbo fires will be managed using a variety of suppression strategies based on firefighter safety, availability of firefighting resource and threats to values at risk.</li> <li>2. Maintain access for firefighting resources and public egress within the Dixie and Jumbo fires' planning area.</li> <li>3. Execute strategies and tactics to reduce fire impacts to primary private and commercial structures, where possible.</li> <li>4. Consider efforts to moderate fire behavior to reduce probability of disrupting primary distribution lines to affected communities and communication sites associated with emergency response.</li> <li>5. Reduce negative impacts of fire management actions on cultural and natural features in the area, where safety and efficacy of suppression actions do not conflict with this objective. Order of priority: Nationally significant cultural resources, critical anadromous fish habitat and other sensitive watershed conditions identified by Agency Administrators.</li> <li>6. Provide for and maintain clear and continual communication with communities, fire responders and land managers.</li> </ol>			
<b>Incident Requirements</b> <ol style="list-style-type: none"> <li>1. Utilize risk-informed decision making to reduce fire fighter exposure to hazards while providing for public safety.</li> <li>2. Utilize pre-existing plans for community protection opportunities in North Star, Black Diamond, Comstock, Dixie, Mallard Ranch, Red River, Concord, Humptown, Frogtown, Fivemile Bar, Mackay Bar, and Copenhaver Ranch.</li> <li>3. Obtain approval for use of mechanized equipment in the Gospel Hump and Frank Church – River of No Return Wilderness areas.</li> <li>4. Document the quantity and placement of long-term retardant. Minimize the use of long-term retardant in designated wilderness areas, except to protect human life or to achieve point protection objectives.</li> <li>5. Any mechanical equipment operations within Inventoried Roadless Areas need prior approval from Agency Administrator.</li> <li>6. Provide current and accurate information to the media, public, and local office holders as to the status of fires within the complex.</li> <li>7. Provide for rehabilitation of areas impacted by incident operations in coordination with jurisdictional agency's resource advisor(s).</li> </ol>			
<b>6. Weather Forecast for Period:</b> See attached Fire Weather Forecast			
<b>7. General Safety Message:</b> See attached Safety Message			
<b>8. Attachments (mark if attached)</b>			
<input checked="" type="checkbox"/>	ICS 203 Organization List	<input checked="" type="checkbox"/>	ICS 205 Communication Plan
<input checked="" type="checkbox"/>	Spot Weather Forecast	<input checked="" type="checkbox"/>	Safety Message
<input checked="" type="checkbox"/>	Fire Behavior Forecast	<input checked="" type="checkbox"/>	Division Supply Order
<input checked="" type="checkbox"/>	ICS 204 Division Assignment Lists	<input checked="" type="checkbox"/>	Incident within an Incident
<input checked="" type="checkbox"/>	ICS 220 Air Operations Summary		
<b>9. Prepared by (Planning Section Chief)</b> 		<b>9. Approved by (Incident Commander)</b> 	



ORGANIZATION ASSIGNMENT LIST		1. INCIDENT NAME	2. DATE PREPARED	3. TIME PREPARED
		DIXIE / JUMBO	8/2/21	2100
4. OPERATIONAL PERIOD: August 3, 2021 0600-2000				
5. INCIDENT COMMAND AND STAFF		9. OPERATIONS SECTION		
INCIDENT COMMANDER	Joe Sampson	PLANNING OPS: Ashley Sites		
INFORMATION OFFICER	Terina Goicoechea; Erik Broeder (T); Alexandra Schwier (T)	LINE OPS: Kevin Smith; Nick Stanzak (T)		
LIAISON OFFICER				
SAFETY OFFICER:	David Smith; Lee Hahnkamp (T)			
6. AGENCY REPRESENTATIVES		DIXIE		
AGENCY	NAME	DIVISION/GROUP	C	Travis Clark; Ryan Green (T)
NEZ PERCE	AA: Cheryl Probert; Marty Mitzkus (T)	DIVISION/ GROUP	F	Matt Nelson; Tom McCleod (T)
CLEARWATER FOREST	AREP: Zoanne Anderson	DIVISION/ GROUP	T	Dave Wilkins; Andrew Pattison (T)
	READ: Jeremy Harris; Stephen Hampton; Erin Grinde; Lizy Mckeag; Doug Olive	DIVISION/GROUP	V	Angel Prieto
IDAHO COUNTY	Sheriff Brian Hewson	DIVISION/GROUP	X	Aaron Jones
		JUMBO		
		DIVISION /GROUP	H	Amanda Holt; Mike Manion (T)
7. PLANNING SECTION		b. BRANCH II- DIVISION/GROUPS		
CHIEF	Julie Shea; Mark Glos	DIVISION/GROUP		
SITUATION UNIT	Jason Willoughby (T)	DIVISION/GROUP		
RESOURCES UNIT	Patty Bates	DIVISION/GROUP		
DEMOB UNIT	Jode Boyles Briggs			
FIRE BEHAVIOR:	Andrew Myhra (T)	c. BRANCH III- DIVISIONS/GROUPS		
STRATEGIC OP PLANNER	Todd Opperman	BRANCH DIRECTOR		
LONG TERM ANALYST	Jon Rieck	DEPUTY		
INCIDENT METEROLOGIST	John Pendergrast	DIVISION/GROUP		
COMPUTER SPECIALIST		DIVISION/GROUP		
GIS SPECIALIST	Joel Harrison; Eyler White (T)	DIVISION/GROUP		
TRAINING SPECIALIST		DIVISION/GROUP		
8. LOGISTICS SECTION		d. AIR OPERATIONS BRANCH		
CHIEF	Russ Riebe; Peter Pappas; Kimberly Burch (T)	BRANCH DIRECTOR		Steve Croy; Jeff Polack
DEPUTY		AIR SUPPORT GROUP SUP		
a. SUPPORT BRANCH		HELICOPTER MANAGER		
SUPPLY UNIT				
ORDERING MANAGER	Tim Stoope			
FACILITIES UNIT	Tom Dauenhauer			
GROUND SUPPORT UNIT	Kyler McCarrell	10. FINANCE/ADMINISTRATION SECTION		
BASE CAMP MANAGER		CHIEF		Joyce Anderson
b. SERVICE BRANCH		COST UNIT		Jane Taylor (T)
MEDICAL UNIT	Connie Weeks; Rosemary Myers (T)	TIME UNIT		Marti Miller
FOOD UNIT	Allen Long	EQUIPMENT TIME		Barbara Hogg
COMMUNICATION UNIT	Todd Orr; Chris Gentili; Jim Olivarez	INCIDENT BUSINESS SPECIALIST		Julie Campbell; Chuck Tapia (T)
PREPARED BY: Patty Bates				



## Fire Weather Forecast



FORECAST NO: 26  
PREDICTION FOR: Tuesday-Wednesday  
SHIFT DATES: Aug 3-4, 2021  
FORECAST ISSUED: 1800 August 2, 2021

NAME OF FIRE: Dixie  
UNIT: ID-NCF NR FMT Team 5  
IMET: John Pendergrast (240) 499-6649

**WEATHER DISCUSSION:** High pressure will remain over the area early this week. Expect a return to warmer drier conditions into midweek. A Pacific system is forecast to enter from the west late week bringing a period of active conditions and westerly winds, with cooler temperatures.

### WEATHER FORECAST TODAY (TUESDAY):

	Dixie (5,600 ft)	Mallard Creek (5,400 ft)	Mariah RAWs (3,400 ft)
Max/Min Temp.	86F / 58F	84F / 59F	91F / 53F
Min/Max RH	22% / 60%	24% / 72%	17% / 93%
Day Winds (20 foot)	SW winds 5 to 10 mph gusting to 15 mph in afternoon.	SW winds 5 to 10 mph gusting to 15 mph in afternoon.	Light drainage winds will become SW 4 to 8 mph gusting to 12 mph.
Night Winds (20 foot)	Becoming down drainage 2 to 4 mph after 2200. Moderate inversion	Becoming down drainage 2 to 4 mph after 2200. Moderate inversion	Downslope/downvalley winds 2-4 mph after 2200
Notes			

**WEATHER:** Haze and some smoke through the day. (see Air Resource Advisor forecast). Partly cloudy.

**LAL:** 1 **CWR:** 0% **HAINES:** 4

**STABILITY / INVERSION:** Moderate night time inversion below active fire area. Mixing by noon.

**SMOKE TRANSPORT WINDS:** Southwest 12 to 17 mph by afternoon.

Sunset Tuesday

2013

Sunrise Wednesday 0525

Sunset Wednesday 2012

**OUTLOOK FOR WEDNESDAY (Dixie):** Increasing higher clouds with haze. Winds Southwest 12 to 16 mph with afternoon gusts to 20 mph. Max Temps 83 to 86F. Min RH: 20%. Max RH: 72%. LAL 1. CWR 0%. Haines 3.

### THREE DAY EXTENDED (5,600 FT)

	Max T	Min RH	Max RH	Ridge Winds	WX
THU	80	27%	72%	SW 10 to 15 mph	Isolated storms LAL 2
FRI	74	30%	65%	W 10 to 15 mph	Isolated storms LAL 2
SAT	71	31%	60%	W 13 to 21 mph	Sct showers LAL 2



## FIRE BEHAVIOR FORECAST

**FORECAST NUMBER:** 26

**TYPE OF FIRE:** Wildland Fire

**FIRE NAME:** Dixie/Jumbo

**OPERATIONAL PERIOD:** Tuesday, August 3rd, 2021

**DATE ISSUED:** 8/2/21

**TIME ISSUED:** 1900

**UNIT:** USFS-ID-NCF

**SIGNED:** Andrew Myhra – FBAN(t)

### INPUTS

**WEATHER SUMMARY:** High pressure over the fire area for the next couple days. Disturbance forecast to enter late in the week with potential for isolated storms. Today: high temps – 84-91 degrees; low RH – River Canyon in the teens, low 20s elsewhere.

### OUTPUTS

#### FIRE BEHAVIOR

##### GENERAL:

- Sunday's rain event will continue to moderate fire behavior for the days ahead.
- Fuels on exposed slopes and under open canopies are showing little sign of residual heat.
- Sheltered fuels, especially in the mixed-conifer will continue to harbor fire in the duff, heavies, and stumps; smoldering and creeping fingers can be expected under closed-canopy.
- ERCs are predicted to drop well below average in the next few days before rebounding.
- Live fuels moistures gathered and measured at Red River RAWs on 7/30:

1000 hr	Beargrass	Doug-fir	Grand-fir	Kinnikinnik	Lodgepole	Ponderosa
7%	133%	109%	151%	127%	144%	119%

- Herbaceous and woody fuels in the river canyon are fully-cured, and can dry quickly especially with wind.
- Live fuels at higher elevations will continue to impede fire spread in the absence of wind and canopy fire.
- Concentrations of heavy fuels in the mixed-conifer will generate enough heat to initiate torching with a heating and drying trend in the weather.
- Minimal fire spread expected over the next 48-72 hrs.
- Spotting potential is at or near zero for the next 48-72 hrs.
- Strong decline in ERC values associated with recent precipitation and expected to remain below average for next 48-72 hrs.

##### SPECIFIC:

**Division C:** Fuel conditions along the river canyon are not expected to support fire through most of shift. Fully-cured grasses on south facing slopes will dry quickly with reduced cloud cover and any wind, but ignition sources from heavy fuels and roll-out are expected to continue to be very limited. Watch for roll-out into pockets of fuels or continued smoldering inside of large logs.

**Division F:** Isolated smokes mid-slope on Blowout Ridge above Comstock Creek, watch for these areas to develop increased fire activity in concentrated fuels that could lead to roll-out. Little activity observed along Rhett Creek.

**Division T:** Dispersed heat north of the 1190rd has the potential build in unburned pockets and produce single or group tree torching later in the burn period especially with the influence of any wind.

**Division X:** Precipitation has greatly influenced the availability of fuels adjacent to previous burnouts. South in the Division, the late heating and drying of west-facing aspects is likely to impede spread across Mallard Creek.

**Division V:** Continuous stands of heavy mixed-conifer between the indirect line and the main fire's edge.

**Jumbo Fire:** No heat signature from satellite imagery. Heat along the west edge may remain a future threat.

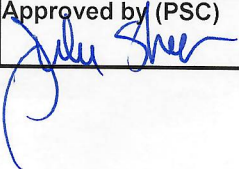
**AIR OPERATIONS:** Haze and smoke throughout the day. Early morning visibility reduced due to fog and low cloud.

**Be aware of rolling material on slopes that may have become loose during consumption of fuels and dislodged by precipitation. Heads up on any rollout that may come to rest in receptive fuel beds and create an opportunity for the fire to utilize topography to its advantage. This is increasingly likely on the south portions of the fire on aspects with exposed fine fuels.**








<b>ASSIGNMENT LIST</b>			1.Branch <b>DIXIE</b>		2. Division/Group <b>DIV F</b>		
3. Incident Name  <b>DIXIE / JUMBO</b>			4. Operational Period: DAY Date: August 3, 2021      Time: 0600-2000				
5. Operations Personnel							
Operations Chief		Ashley Sites; Kevin Smith; Nick Stanzak (T)		Division/Group Supervisor		Matt Nelson; Tom McCleod (T)	
Branch Director				Air Operations Director Air Attack Supervisor		Steve Croy; Jeff Polack	
6. Resources Assigned This Period							
Strike Team/Task Force/ Resource Designator	Last Shift	Leader	No. Pers.	EMT	Trans. Needed	Drop Off PT./Time	Pick Up PT./Time
C-30 HC1 Idaho City IHC	8/3	Brian Cardoza	21	x	N	ICP/0600	ICP/2000
C-33 HC2 R&R Contracting	8/10	Chris Rocha	20		N	ICP/0600	ICP/2000
E-1 HETF Elk Ridge Ranch	8/15	Scott Anderson	8		N	ICP/0600	ICP/2000
E-167 ENG6 Three Rivers	8/9	Tommy Diaz	3		N	ICP/0600	ICP/2000
E-174 ENG6 BLM Engine 5646	8/11	Truett Anderson	4	x	N	ICP/0600	ICP/2000
E-117 ENG6 Forestry & Fire TGF	8/5	Forrest Baker	3	x	N	ICP/0600	ICP/2000
E-175 ENG6 Oklahoma	8/12	Clayton Hearst	2		N	ICP/0600	ICP/2000
E-176 ENG6 Verde Valley	8/16	Tucker Ihrman	3		N	ICP/0600	ICP/2000
E-87 ENG6 DB Jet	8/4	Derek Mestrovich	3		N	ICP/0600	ICP/2000
E-157 ENG6 Hurricane RFD	8/5	Tyler Hirschfeld	4	x	N	ICP/0600	ICP/2000
E-132 WTS2 Moranville	8/13	Mark Lock	1		N	ICP/0600	ICP/2000
E-147 WTS2 DNN Enterprises	8/4	Brian Woodcock	1		N	ICP/0600	ICP/2000
E-15 WTS2 Lance LLC	8/12	John Hale	1		N	ICP/0600	ICP/2000
E-108 DOZ3 Flash Excavation	8/7	Shirley Meadows	1		N	ICP/0600	ICP/2000
E-99 SKG2 Skidgeon	8/12	Jaylord Rammell	2		N	ICP/0600	ICP/2000
E-102 Log Loader Mark Anderson			2		N	ICP/0600	ICP/2000
C-30.17 HEQB Kelsey McLean	8/3		1		N	ICP/0600	ICP/2000
C-30.5 TFLD Brad Kitchens	8/3		1		N	ICP/0600	ICP/2000
O-222 FELB Ben Jongeward	8/8		1		N	ICP/0600	ICP/2000
O-188 FAL A&F Faller Module	8/8	Tim Jenkins/Rivera	2		N	ICP/0600	ICP/2000
O-256 Squad Red River Bravo	8/7	Joe Anderson	4		N	ICP/0600	ICP/2000
O-288 FAL Faller Brothers	8/3	Dave Hyatt	1		N	ICP/0600	ICP/2000
O-289 FAL Faller Brothers	8/3	Mike Worley	1		N	ICP/0600	ICP/2000
O-224 HEQB Tom Franklin	8/7		1		N	ICP/0600	ICP/2000
O-294 HEQB Shane Batton (T)	8/12		1		N	ICP/0600	ICP/2000
7. Control Operations							
<p><b>Task:</b> Continue to patrol and monitor fire threat to the areas of Dixie, Black Diamond and Comstock. Take action as necessary to point protect values and maintain egress on road systems.</p> <p><b>Purpose:</b> Maintain egress and protect values at risk.</p> <p><b>End State:</b> Access is maintained to the Dixie/Comstock area and values at risk are protected.</p>							
8. Special Instructions:							
<p>Identify resources for initial attack</p> <p>Coordinate actions with READs</p>							
9. Division/Group Communication Summary							
Function	Frequency - RX	Frequency - TX	Tone	Channel	Comments		
Command 7	170.0125	165.2500	110.9	7	Repeater assignments are suggestions. If another repeater works better, use it.		
Tactical	168.6000	168.6000	110.9	3			
Air to Ground CMD	168.4000	168.4000		13			
Air to Ground TAC	169.1500	169.1500		14			
Prepared by (RESL) Patty Bates		Approved by (PSC) 		Date August 2, 2021		Time 2100	



<b>ASSIGNMENT LIST</b>				1.Branch <b>Dixie</b>		2. Division/Group <b>DIV T (page 1 of 2)</b>	
3. Incident Name <b>DIXIE / JUMBO</b>				4. Operational Period: DAY Date: August 3, 2021      Time: 0600-2000			
5. Operations Personnel							
Operations Chief		Ashley Sites; Kevin Smith; Nick Stanzak (T)		Division/Group Supervisor		Dave Wilkins; Andrew Pattison (T)	
Branch Director				Air Operations Director Air Attack Supervisor		Steve Croy; Jeff Polack	
6. Resources Assigned This Period							
Strike Team/Task Force/ Resource Designator	Last Shift	Leader	No. Pers.	EMT	Trans. Needed	Drop Off PT./Time	Pick Up PT./Time
C-34 HC2 Wy'east Wildland	8/11	Andrew Williamson	20		N	ICP/0600	ICP/2000
O-255 Salmon River Module*	8/9	Jordan Francom	10		N	ICP/0600	ICP/2000
Grangeville Helitack*		Logue	6		N	ICP/0600	ICP/2000
E-4 ENG4 Metal Works	8/13	Isaac Cordova	3		N	ICP/0600	ICP/2000
E-149 ENG6 Griffith	8/5	William Griffith	3		N	ICP/0600	ICP/2000
E-150 ENG6 Crane	8/5	Don Crane	2		N	ICP/0600	ICP/2000
E-85 ENG6 Cougar	8/16	Cathy Reilly	3		N	ICP/0600	ICP/2000
E-101 WTS2 Big Cedar	8/3	Darryl Baker	1		N	ICP/0600	ICP/2000
E-16 WTS2 Flash EX	8/6	Gordon Echel	1		N	ICP/0600	ICP/2000
E-99 SKG2 Rammell	8/12	Jaylord Rammell	2		N	ICP/0600	ICP/2000
E-130 HETF Bonnalie Logging	8/14	Nita Lorentz	13		N	ICP/0600	ICP/2000
E-104 HETF Aaron Downing Logging	8/6	Aaron Downing	7		N	ICP/0600	ICP/2000
E-127 DOZ3 McColloch	8/11	Jacob Prow	2		N	ICP/0600	ICP/2000
E-18 Log Loader Cox	8/10	Marvin Greg	2		N	ICP/0600	ICP/2000
E-97 MAST	8/4	Wes Renee	2		N	ICP/0600	ICP/2000
E-163 MAST Bonnalie Logging	8/6	Eric Mader	2		N	ICP/0600	ICP/2000
NCF Grader*		Kevin Teats	1		N	ICP/0600	ICP/2000
E-128 Ambo 1 (AMBU Wilderness Ambulance)	8/10	Alex Helm	2		N	DP1	DP1
7. Control Operations							
<p><b>Task:</b> Monitor for spots outside the slop over. Assist holding and mop-up from DP1 to DP7 as necessary. Assist on slop over and implement tactics to contain it.</p> <p><b>Purpose:</b> Keep fire from crossing Red River drainage and point protect values at risk.</p> <p><b>End State:</b> Slop over/spot fires are contained and the main fire is held to the south of Dixie Road. Access along Jack Mountain Road and Forest Road 421 to Whitewater Ranch remains open.</p> <p>* local Forest resource</p>							
8. Special Instructions:							
Identify resources available for IA							
9. Division/Group Communication Summary							
Function	Frequency - RX	Frequency - TX	Tone		Channel	Comments Repeater assignments are suggestions. If another repeater works better, use it.	
Command 9	169.8125	164.6750	110.9		9		
Tactical	168.2000	168.2000	110.9		2		
Air to Ground CMD	168.4000	168.4000			13		
Air to Ground TAC	169.1500	169.1500			14		
Prepared by (RESL) Patty Bates		Approved by (PSC) 		Date August 2, 2021		Time 2100	















## Prepared Time: 2000

## Prepared Time: 2000


1. INCIDENT NAME: Dixie / Jumbo Fires	2. OPS PERIOD DATE: 08/03/2021	START TIME: 0800	END TIME: 2100	SUNRISE 0527	SUNSET: 2007	Pumpkin: for returning to base only
3. REMARKS (Safety Notes, Hazards, Air Operations Special Equipment, etc.): Assess mission complexity and the Benefit/Risk of the mission. Ensure visibility and winds are adequate to safely conduct flight operations. Ensure safe vertical & horizontal separation between aircraft in smoky conditions. Call in and out of the dips. Beware of general aviation in Salmon River corridor. Smoky conditions can hamper aviation operations, adhere to visibility limitations, and DO NOT be pressured into accepting a mission that you know or feel is unsafe! <i>Terminate operational rotorwing no later than sunset.</i>			4. <b>READY ALERT AIRCRAFT:</b> H.B.205PT, Payette S.H. Contact GVC with mission details. <u>Hospitals:</u> -Syringa General land Grangeville at GIC to meet ambulance. -St. Joseph's Regional 46° 25.02 'x 117° 01.45' Rooftop T-III Pad.			
			5. TFR's: Dixie Fire: 1/5565 Freq:124.25 Polygon, Altitude: Surface to 11,000 MSL			

6. POSITION	NAME	PHONE #	7. FREQUENCIES	AM	FM	8. Aircraft Ordering Protocol
Forest Aviation Officer	Willy Acton	208-507-0942	A/G 1 Primary A/G 2 Secondary		168.4000 169.1500	<u>Air Attack Platforms:</u> Located GIC
NCF Dispatch	Aircraft Desk	208-983-6803	Take Off/Landing		169.475	<u>AIRTANKERS/SCOOPERS</u> Order thru Air Attack/Line Operation
AOBD	Jeff Polack	208-816-3447	A/A Helicopters A/A F/W A/A Briefing	126.3000 124.2500 132.7000		<u>SEATS</u> Order thru Air Attack/Line Operations
AOBD	Steve Croy	540-230-2568	Command from Mullins HB CMD-8		170.9750Rx 168.7000Tx 110.9TT	<u>AIR ATTACK</u> Order thru Line Operations to Helibase to Aircraft Desk in Grangeville
HEBM Mullins HLB	Susan Bissell	208-842-2671 (landline)	EMS 2 (Ch. 15 in I-205)		155.2800Rx 155.2800Tx 156.7TT	Helicopters Order thru Division Supervisor to Helibase. Additional helicopters available through Grangeville.
HMGB Tolo Helibase	John Abernathy	720-837-9591	National Flight Follow		168.6500 110.9 TX/RX	
Air Attack	Ken Stump	XXX-XXX-XXXX	AIR GUARD		168.6250 110.9 TX/RX	
<u>IA FIRE FREQUENCIES:</u> See Knee Board. Do not launch without one!						
NOTES: Mullins HLB: 45° 43.3' x 115° 22.2' Elevation: 4299' Tolo HLB: 45° 55.003' x 116° 11.446' Elevation: 3343' PLANNED MISSIONS:Recons,Buckets and Cargo Support Local I.A. whenever possible.						

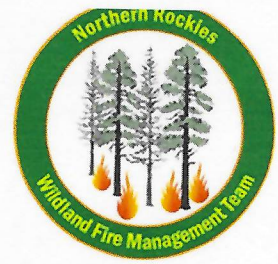
## 9. HELICOPTERS

CALL SIGN / FAA N#	TY	MAKE/MODEL	BASE	Start	Avail	REMARKS	CALL SIGN / FAA N#	TY	MAKE/MODEL	BASE	Start	Avail	REMARKS
303AJ	1	CH-47D	Tolo	0900	0930	Buckets	3181F	2	UH-1F	Mullins	0800	0830	Buckets, external cargo *Forest prepo resource*
205PT	2	B-205	Mullins	0800	0830	Buckets, Cargo, PAX							



INCIDENT RADIO COMMUNICATIONS PLAN I-205				1. INCIDENT NAME		2. DATE/TIME PREPARED		3. OPERATIONAL PERIOD DATE/TIME			
				Dixie/Jumbo Fire		8/2/2021		8/3/2021 0630 to 2000			
4. BASIC RADIO CHANNEL UTILIZATION											
Ch #	Function	Channel Name	Assignment	RX Freq	NW	RX Tone/NAC	TX Freq	NW	TX Tone/NAC	Mode Analog (A) Digital (D) Mixed (M)	Remarks
1	TACTICAL	TAC 1	DIV V	168.0500	N	110.9	168.0500	N	110.9	A	DIVISION VICTOR
2	TACTICAL	TAC 2	DIV T	168.2000	N	110.9	168.2000	N	110.9	A	DIVISION TANGO/UNIFORM
3	TACTICAL	TAC 3	DIV F	168.6000	N	110.9	168.6000	N	110.9	A	DIVISION FOXTROT/PAPA
4	TACTICAL	TAC 4	JUMBO	168.2500	N	110.9	168.2500	N	110.9	A	UNASSIGNED
5	TACTICAL	TAC 5	DIV C	166.7250	N	110.9	166.7250	N	110.9	A	DIVISION CHARLEY
6	TACTICAL	TAC 6	DIV X	166.7750	N	110.9	166.7750	N	110.9	A	DIVISION XRAY
7	COMMAND	CMD 7	DIV FV	170.0125	N	110.9	165.2500	N	110.9	A	OREGON BUTTE LOOKOUT
8	COMMAND	CMD 8		170.9750	N	110.9	168.7000	N	110.9	A	IRON MOUNTAIN
9	COMMAND	CMD 9	DIV TX	169.8125	N	110.9	164.6750	N	110.9	A	BOSTON MOUNTAIN
10	COMMAND	CMD 10	DIV C	171.8875	N	110.9	162.1875	N	110.9	A	SHEEPEATER LOOKOUT
11	COMMAND	CMD 11	DIV FV	171.4125	N	110.9	164.6000	N	110.9	A	MOOSE BUTTE
12	LOCAL FS NET	OREBUTTE	ALL DIV	173.1375	N	0.0	166.2000	N	127.3	A	NEZ EAST REPEATER
13	AIR TO GROUND	A/G CMD	ALL DIV	168.4000	N	0.0	168.4000	N	0.0	A	A/G COMMAND
14	AIR TO GROUND	A/G TAC	ALL DIV	169.1500	N	0.0	169.1500	N	0.0	A	A/G TACTICAL
15	AIR AMBULANCE	EMS 2	EMERGENCY	155.2800	N	0.0	155.2800	N	0.0	A	STATE COMM/AIR AMBULANCE
16	AIR GUARD	AIRGUARD	EMERGENCY	168.6250	N	0.0	168.6250	N	110.9	A	EMERGENCY USE ONLY
5. Special Instructions:											
6. I-205 Prepared By: Communications Unit Leader						Name: TODD ORR (COML)		Signature: 			





# Safety Message

Major Hazards and Risks: Driving, Transitions, Fatigue

**DRIVING/TRAFFIC:** Narrow and winding mountain roads on all divisions can make driving hazardous. Use escort vehicles in front of all lowboys to warn oncoming traffic when moving equipment. Watch for unexpected rock falls on roads and slippery spots from the recent rain. Limit cell phone usage and all other distractions when driving. Practice defensive driving at all times. Refer to "Roadside Response Safety" IRPG pg. 26

**TRANSITIONS:** Many accidents occur during transition periods. Important work remains to be done and every resource here is vital to the success of the mission. Focus on the tasks to be done and the environment where they occur. Use the right operational tempo to complete tasks in a safe and effective manner. Get assistance when needed. The Team's ultimate goal is no injuries or accidents!!

**FATIGUE:** Monitor personnel for fatigue and complacency. Take breaks, drink plenty of water, and watch for signs of inattentiveness. Long work hours, reduced sleep, altitude, and humidity will take a toll on the body and mind. Be mindful of your condition and watch others for signs of cumulative mental and physical fatigue.

## COVID-19

- **Social Distancing** - Maintain 6' foot distance whenever possible.
- **Wear a mask** – For everyone's safety "wear a mask" when riding in vehicles in groups of more than one not part of your "Module of One" and social distancing is not possible.
- **Wash Hands**- Wash hands frequently using soap and water or use hand sanitizer if needed.
- **Watch for symptoms** - Watch personnel for cough, headache, loss of taste or smell, temperature, shortness of breath.
- **Use Common sense**- If sick, stay home, and report illness. Avoid crowded locations.
- **Monitor**- CDC web site provides updated information. Local health department.

**Be Mindful About Safety in all Your Actions**

*Northern Rockies Team 5*



## DIXIE/JUMBO FIRE

### Incident within an Incident Emergency Action Plan

In the case of a serious accident requiring patient transport to a medical facility:

- The closest ranking Operations Leader (i.e., Division Supervisor) at the accident scene will take charge and be the Point of Contact (POC).
- Use the 8-line protocol to assess patient, if patient evaluation is either red or yellow use **Dixie Fire Command Frequency Identified for the Division the IWI is Occurring on**. Air extraction resources will use Air to Ground tactical or Air Ambulance EMS2.
- If incident should occur outside the Dixie/Jumbo Fires Incident contact 911 and Dixie fire Communications on Command frequency for monitoring and support and to notify whether patient is incident personnel or civilian.
- Patients evaluated as Green notify nearest supervisor of the location of the incident and assigned EMT to determine treatment and transport to Medical Unit.
- Upon notification of a serious accident, the Following will report to the ICP Communications trailer, Incident Commander, Safety Officer, Operations Section Chief (Planning OPS), and Medical Unit Leader will report to the Communications to monitor IWI. Safety Officer will notify Finance and/or Comps claims of the IWI
- Incident Radio traffic will be monitored from 0500 to 2200 every day on Command at ICP.

Approved by: /S/ Joe Sampson

Incident Commander

Date: 08/01/2021



1. Incident/Project Name		2. Operational Period: August 03, 2021 0600-2000				
Dixie/Jumbo Fires		Date/Time 08/02/21 1500				
3. Ambulance Services						
Ambulance	Complete Address	Phone & EMS Frequency	Advanced Life Support (ALS) Yes No			
Elk City Ambulance	Elk City, Idaho	911 155.280			X	
Wilderness Medics	Red River Base Camp	Command	X			
4. Air Ambulance Services						
Name	Phone	Type of Aircraft & Capability				
Life Flight Network	911 155.340 tan	Paramedics/Flight Nurse/Night vision				
2 Bear Air	911 155.340 tan	Hoist/Paramedics				
5. Hospitals						
Name Complete Address	GPS Datum – WGS 84 Coordinate Standard Degrees Decimal Minutes DD° MM.MMM' N - Lat DD° MM.MMM' W - Long	Travel Time Air Gnd	Phone	Helipad Yes No	Level of Care Facility	
Syringa General Hospital 607 W. Main Grangeville, ID 83530	Lat:	30 Min	2 Hrs	208-983-5919 ER	<input type="checkbox"/> <input checked="" type="checkbox"/>	Critical Access  Land at Airport
	Long					
	VHF: 155.280 white					
St. Luke's Medical Center McCall, Idaho	Lat: N 44 53.22	45 Min		208-634-2221	<input type="checkbox"/> X	Critical Access  Land at Airport
	Long W 116 06.5					
	VHF: 155.280 white					
St. Joseph's Regional Medical Center 415 6 <sup>th</sup> St. Lewiston, Idaho 83501	Lat: N 46 25.02	45 Min	3 Hrs	208-799-5799 ER	X	Level 3  Roof Top Pad Level 2  Ground Level Pad
	Long W 117 01.45					
	VHF: 155.280 white					
Community Medical Center 2827 Ft. Missoula Rd., Missoula, MT	Lat: N 46 50.909	70 Min		406-327-4171 ER	X	
	Long W 114 02.866					
	VHF: 155.280 white					
6.						
Division   Branch   Group						
All Divisions:	Crew Supplies:	Crew EMTs:				
DIV C	N/A	Unstaffed with Medical Unit EMTs				
DIV F DP 1	ALS Ambulance	Wilderness Medics (Ambo 1) DP 1				
DIV T	ALS Ambulance	Wilderness Medics (Ambo 1) DP 1				
DIV X DP 7	BLS kit, O2, TRS, KED	EMTF – Gilbert DP 7				
DIV V	N/A	Unstaffed with Medical Unit EMTs				
Jumbo	N/A	Unstaffed with Medical Unit EMTs				
Prepared by: Connie Weeks	MEDL	Approved by: Dave Smith				



## Dixie/Jumbo Logistics



### Meals

Breakfast 0500 – 0830

Lunch – picked up at reefer

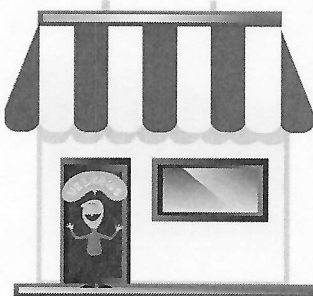
Dinner 1800 – 2200

### Showers

0500 – 1100

1400 – 2200

\*closed from 1100-1400 for cleaning



### Supply

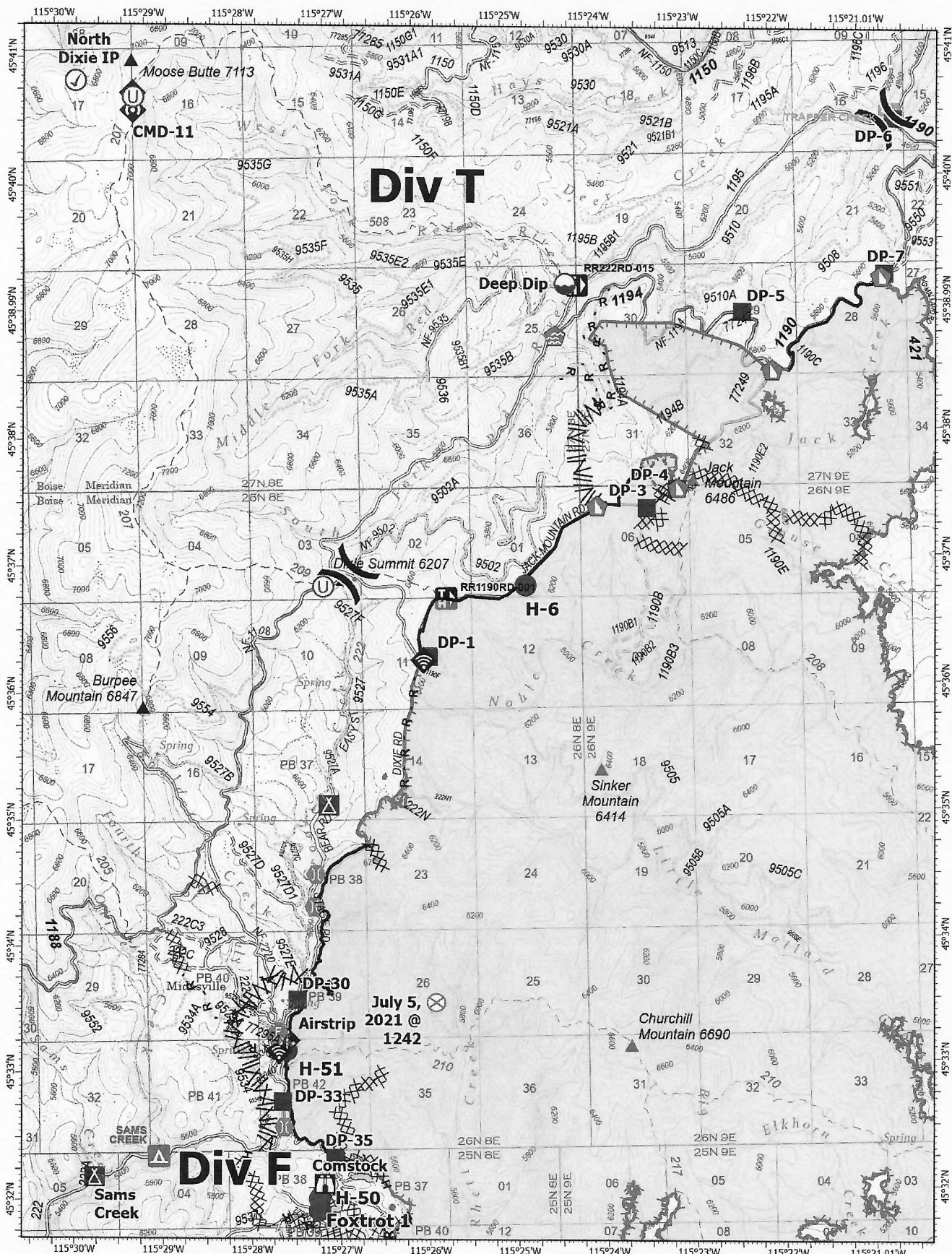
0530 – 2130



## Division Supply Order Dixie/Jumbo Fire

<b>Order Number:</b>		<b>Date -</b>		<b>Division -</b>	
Order taken in Communications by:				RADO or COML confirmation:	
<b>DIVS Supervisor:</b>				<b>Date &amp; Time Needed:</b>	
<b>Delivery Contact:</b>				<b>Delivery Location:</b>	
Cell Phone #:				UTM	
Radio Channel Number:				Lat: Long:	
<b>Mode of Delivery (Circle Means):</b>		Ground Support		DP/LZ:	
Division will pick up		Deliver to Helibase		Other:	
SPUL Confirmation can be filled as needed (Circle): Yes or No - Requiring at least 24 hours to fill.					
<b>Item</b>	<b>Description:</b>	<b>Quantity</b>	<b>Comments</b>		
	<b>Hose Lay Kit</b> , 1000 Feet = (10) 1 1/2" Hose; and 5 Each of: 1" Hose, 1 1/2" Wyes, 1 1/2" to 1" Reducers, and 1" Forester Nozzles				
1		1000 Feet	4	4000 Feet	
2		2000 Feet	5	5000 Feet	
3		3000 Feet	6	6000 Feet	
	<b>Garden Hose Kit</b> , 500 Feet = (10) 3/4" Hose, and (5 Each): 3/4" Wye, 3/4" Shutoff, 3/4" Nozzle, 1" Wye, and 1" to 3/4" Reducers)				
7		500 Feet	10	3000 Feet	
8		1000 Feet	11	4000 Feet	
9		2000 Feet	12	5000 Feet	
	<b>Water Handling Equipment:</b>		<b>Item #</b>	<b>Description</b>	<b>Quantity</b>
13	Hose: 1 1/2" (100')	LG		Line Tools:	
14	1" (100')	LG	40	Pulaski	EA
15	3/4" (50' Toy/Garden)	LG	41	Combi	EA
16	Gated Wye: 1 1/2"	EA	42	McCloud	EA
17	1"	EA	43	Shovel	EA
18	3/4"	EA	44	Water: Cubies	EA
19	Reducer: 1 1/2" X 1"	EA	45	Bottled	CS
20	1" X 3/4"	EA	46	Gatorade	CS
21	Nozzle: 1" Forester	EA	47	MRE's	BX
22	1" Mystery (KK)	EA	48	Flagging: Lime Green	RO
23	1 1/2" Red Barrel	EA	49	Pink	RO
24	3/4" Brass		50	Orange	RO
25	Shutoff Values: 3/4"	EA	51	Killer Tree	RO
26	Pumpkin or Porta-Tank, 1800 gal.	EA	52	Wrap, Structural	RO
27	Blivets, Slingable 55 Gal	EA	53	Other:	
28	Mopup Kits 3 Person	EA	54		
29	Backpack Pumps	EA	55		
30	Sprinkler Kits	EA	56		
31	Foam (5 GALS)	PL	57		
32	Mark III Kits	KT	58		
33	Drip Torch	EA	59		
34	Fusees (72/Case)	CS	60		
35	Chainsaw Kit	KT	61	Bar Oil	Gal
36	Fuel, 5 gallons:	Gas	Can	Diesel, 5 gallon	Can
37	Mark III (20:1)		Can	63	QT
38	Chainsaw (50:1)	Mixed	Can	64	BT
				65	BT
39	Drip Torch (3:2)		Can		



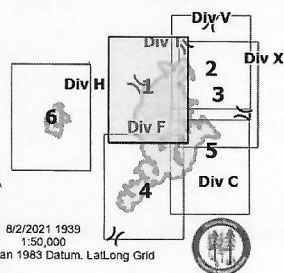


## IAP Map

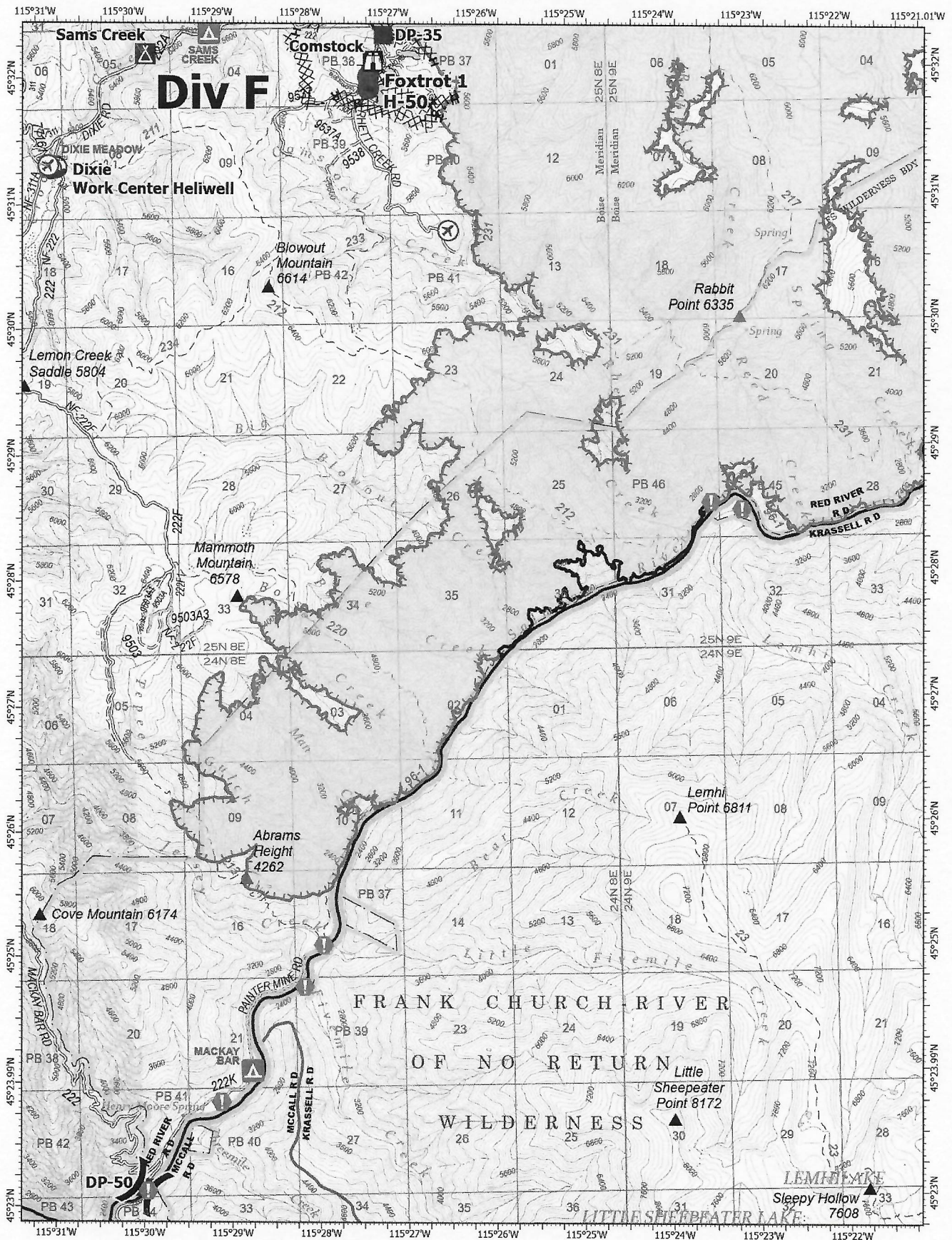
Dixie  
ID-NCF-000448  
08/03/2021

42,039 acres at 07/31/2021 00:15 PDT  
Acres from IR and GPS

0 0.5 1 Miles







## IAP Map

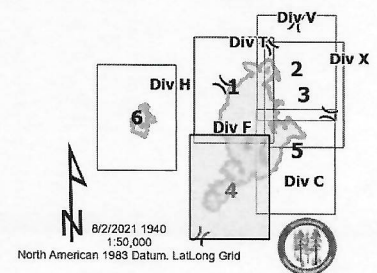
Dixie  
ID-NCF-000448  
08/03/2021

42,039 acres at 07/31/2021 00:15 PDT  
Acres from IR and GPS

0 0.5 1 Miles

- ⊗ Airstrip or Airport
- Dip Site
- Helispot
- ⌵ Division Break
- Drop Point
- ⚠ Camp
- ⚠ Lookout
- ⚠ Value at Risk
- ⚠ Bridge

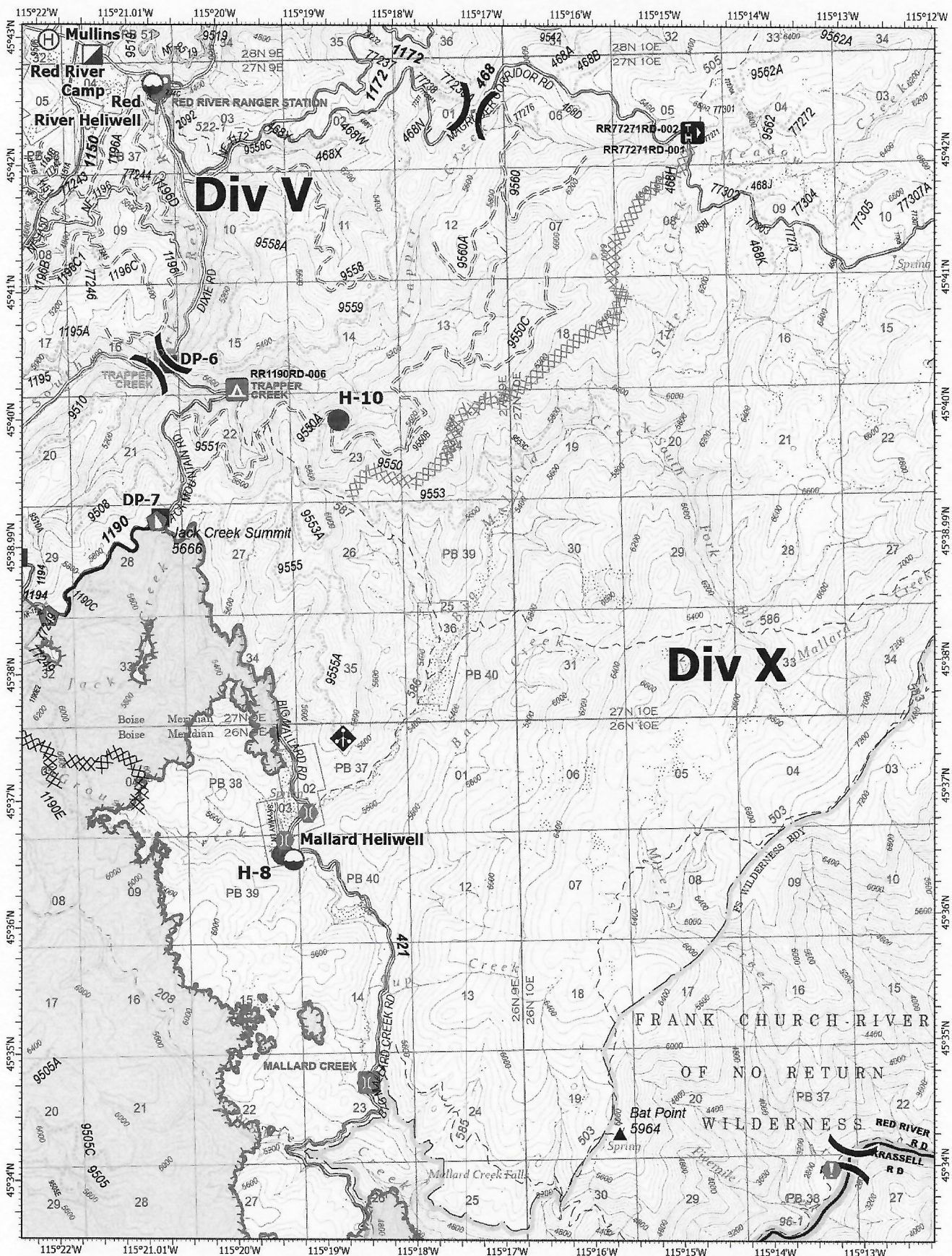
- ⌵ Completed Dozer Line
- ⌵ Completed Fuel Break
- H - Completed Hand Line
- R - Completed Road as Line
- Access or Improved Road
- Fire Edge
- Contained Line
- Wildfire Daily Fire Perimeter











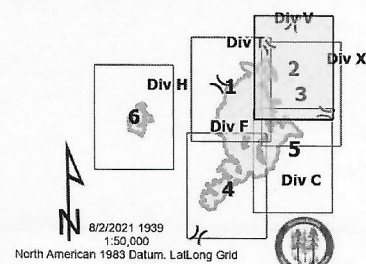
## IAP Map

Dixie  
ID-NCF-000448  
08/03/2021

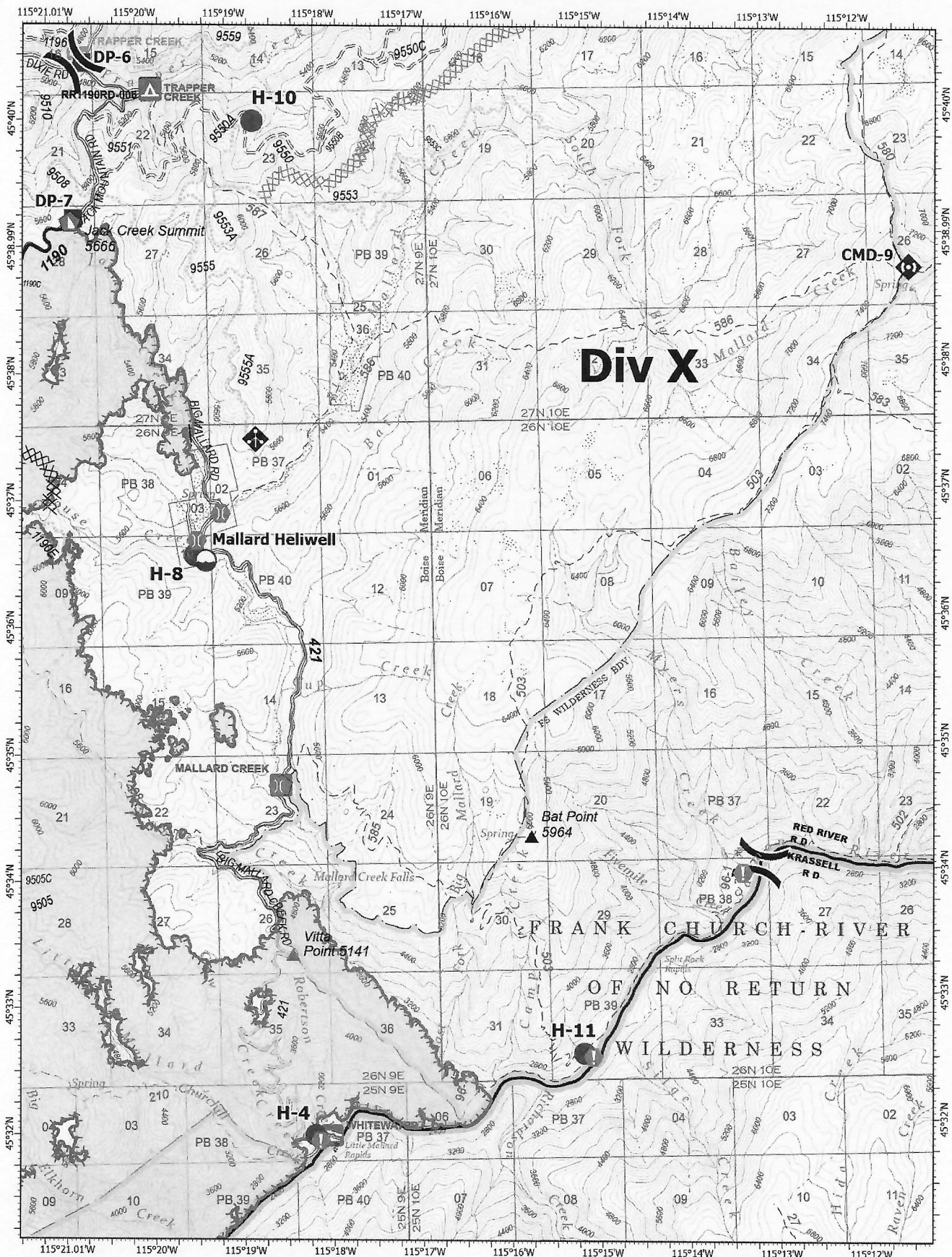
42,039 acres at 07/31/2021 00:15 PDT  
Acres from IR and GPS

0 0.5 1 Miles

- Dip Site
- Helispot
- Helibase
- Division Break
- Incident Command Post
- Drop Point
- Value at Risk
- Bridge
- Structure Wrap
- Dozer Push
- Mobile Weather Unit
- Completed Dozer Line
- Completed Fuel Break
- Planned Dozer Line
- Fire Edge
- Contained Line
- Wildfire Daily Fire Perimeter







## IAP Map

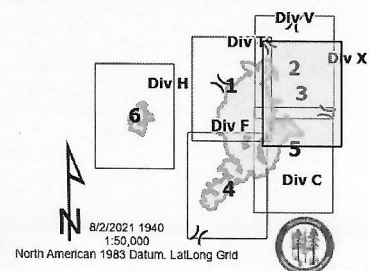
Dixie  
ID-NCF-000448  
08/03/2021

42,039 acres at 07/31/2021 00:15 PDT  
Acres from IR and GPS

0 0.5 1 Miles

- Dip Site
- Helispot
- Division Break
- Drop Point
- Value at Risk
- Bridge
- Structure Wrap
- Dozer Push

- Mobile Weather Unit
- Repeater
- Completed Dozer Line
- Completed Fuel Break
- Planned Dozer Line
- Fire Edge
- Contained Line
- Wildfire Daily Fire Perimeter













# Medical Incident Report – 8 Line

FOR A NON-EMERGENCY INCIDENT, WORK THROUGH CHAIN OF COMMAND TO REPORT AND TRANSPORT INJURED PERSONNEL AS NECESSARY.

FOR A MEDICAL EMERGENCY: IDENTIFY ON SCENE INCIDENT COMMANDER BY NAME AND POSITION AND ANNOUNCE **"MEDICAL EMERGENCY"** TO INITIATE RESPONSE FROM IMT COMMUNICATIONS/DISPATCH.

Use the following items to communicate situation to communications/dispatch.

## 1. CONTACT COMMUNICATIONS / DISPATCH (Verify correct frequency prior to starting report)

Ex: "Communications, Div. Alpha. Stand-by for Emergency Traffic."

## 2. INCIDENT STATUS: Provide incident summary (including number of patients) and command structure.

Ex: "Communications, I have a Red priority patient, unconscious, struck by a falling tree. Requesting air ambulance to Forest Road 1 at (Lat./Long.) This will be the Trout Meadow Medical, IC is TFLD Jones. EMT Smith is providing medical care."

Severity of Emergency / Transport Priority	<input type="checkbox"/> <b>RED / PRIORITY 1 Life or limb threatening injury or illness. Evacuation need is IMMEDIATE</b> Ex: Unconscious, difficulty breathing, bleeding severely, 2° – 3° burns more than 4 palm sizes, heat stroke, disoriented. <input type="checkbox"/> <b>YELLOW / PRIORITY 2 Serious Injury or illness. Evacuation may be DELAYED if necessary.</b> Ex: Significant trauma, unable to walk, 2° – 3° burns not more than 1-3 palm sizes. <input type="checkbox"/> <b>GREEN / PRIORITY 3 Minor Injury or illness. Non-Emergency transport</b> Ex: Sprains, strains, minor heat-related illness.	
Nature of Injury or Illness & Mechanism of Injury		Brief Summary of Injury or Illness (Ex: Unconscious, Struck by Falling Tree)
Transport Request		Air Ambulance / Short Haul/Hoist Ground Ambulance / Other
Patient Location		Descriptive Location & Lat. / Long. (WGS84)
Incident Name		Geographic Name + "Medical" (Ex: Trout Meadow Medical)
On-Scene Incident Commander		Name of on-scene IC of Incident within an Incident (Ex: TFLD Jones)
Patient Care		Name of Care Provider (Ex: EMT Smith)

## 3. INITIAL PATIENT ASSESSMENT: Complete this section for each patient as applicable (start with the most severe patient)

Patient Assessment:

See IRPG page 106

Treatment:

## 4. TRANSPORT PLAN:

Evacuation Location (if different): (Descriptive Location (drop point, intersection, etc.) or Lat. / Long.) Patient's ETA to Evacuation Location:

Helispot / Extraction Site Size and Hazards:

## 5. ADDITIONAL RESOURCES / EQUIPMENT NEEDS:

Example: Paramedic/EMT, Crews, Immobilization Devices, AED, Oxygen, Trauma Bag, IV/Fluid(s), Splints, Rope rescue, Wheeled litter, HAZMAT, Extrication

## 6. COMMUNICATIONS: Identify State Air/Ground EMS Frequencies and Hospital Contacts as applicable

Function	Channel Name/Number	Receive (RX)	Tone/NAC *	Transmit (TX)	Tone/NAC *
COMMAND					
AIR-TO-GRND					
TACTICAL					

## 7. CONTINGENCY: Considerations: If primary options fail, what actions can be implemented in conjunction with primary evacuation method? Be thinking ahead.

## 8. ADDITIONAL INFORMATION: Updates/Changes, etc.