

Dixie Fire

ID-NCF-000448

P1N402 (0117)



Jumbo Fire

ID-NCF-000463


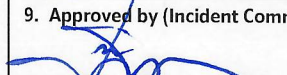
P1EKT5 (0117)

INCIDENT ACTION PLAN

Thursday, August 5, 2021



RED FLAG WARNING

INCIDENT OBJECTIVES	1. Incident Name DIXIE / JUMBO	2. Date Prepared August 4, 2021	3. Time 2100
4. Operational Period: August 5, 2021 DAY OPERATIONS 0600 - 2000			
Incident Objectives <ol style="list-style-type: none"> 1. The Dixie and Jumbo fires will be managed using a variety of suppression strategies based on firefighter safety, availability of firefighting resource and threats to values at risk. 2. Maintain access for firefighting resources and public egress within the Dixie and Jumbo fires' planning area. 3. Execute strategies and tactics to reduce fire impacts to primary private and commercial structures, where possible. 4. Consider efforts to moderate fire behavior to reduce probability of disrupting primary distribution lines to affected communities and communication sites associated with emergency response. 5. Reduce negative impacts of fire management actions on cultural and natural features in the area, where safety and efficacy of suppression actions do not conflict with this objective. Order of priority: Nationally significant cultural resources, critical anadromous fish habitat and other sensitive watershed conditions identified by Agency Administrators. 6. Provide for and maintain clear and continual communication with communities, fire responders and land managers. Incident Requirements <ol style="list-style-type: none"> 1. Utilize risk-informed decision making to reduce fire fighter exposure to hazards while providing for public safety. 2. Utilize pre-existing plans for community protection opportunities in North Star, Black Diamond, Comstock, Dixie, Mallard Ranch, Red River, Concord, Humptown, Frogtown, Fivemile Bar, Mackay Bar, and Copenhagen Ranch. 3. Obtain approval for use of mechanized equipment in the Gospel Hump and Frank Church – River of No Return Wilderness areas. 4. Document the quantity and placement of long-term retardant. Minimize the use of long-term retardant in designated wilderness areas, except to protect human life or to achieve point protection objectives. 5. Any mechanical equipment operations within Inventoried Roadless Areas need prior approval from Agency Administrator. 6. Provide current and accurate information to the media, public, and local office holders as to the status of fires within the complex. 7. Provide for rehabilitation of areas impacted by incident operations in coordination with jurisdictional agency's resource advisor(s). 			
6. Weather Forecast for Period: See attached Fire Weather Forecast			
7. General Safety Message: See attached Safety Message			
8. Attachments (mark if attached)			
<input checked="" type="checkbox"/>	ICS 203 Organization List	<input checked="" type="checkbox"/>	ICS 205 Communication Plan
<input checked="" type="checkbox"/>	Spot Weather Forecast	<input checked="" type="checkbox"/>	Safety Message
<input checked="" type="checkbox"/>	Fire Behavior Forecast	<input checked="" type="checkbox"/>	Division Supply Order
<input checked="" type="checkbox"/>	ICS 204 Division Assignment Lists	<input checked="" type="checkbox"/>	Incident within an Incident
<input checked="" type="checkbox"/>	ICS 220 Air Operations Summary		
9. Prepared by (Planning Section Chief) 		9. Approved by (Incident Commander) 	

ORGANIZATION ASSIGNMENT LIST		1. INCIDENT NAME	2. DATE PREPARED	3. TIME PREPARED
		DIXIE / JUMBO	8/4/21	2100
4. OPERATIONAL PERIOD: August 5, 2021 0600-2000				
5. INCIDENT COMMAND AND STAFF		9. OPERATIONS SECTION		
INCIDENT COMMANDER	Joe Sampson	PLANNING OPS: Ashley Sites		
INFORMATION OFFICER	Terina Goicoechea; Erik Broeder (T); Alexandra Schwier (T)	LINE OPS: Kevin Smith; Nick Stanzak (T)		
LIAISON OFFICER				
SAFETY OFFICER:	David Smith; Lee Hahnkamp (T); Leroy Holguin (T)			
6. AGENCY REPRESENTATIVES		DIXIE		
AGENCY	NAME	DIVISION/GROUP	C	Travis Clark; Ryan Green (T)
NEZ PERCE	AA: Cheryl Probert; Marty Mitzkus (T)	DIVISION/ GROUP	F	Matt Nelson; Tom McLeod (T)
CLEARWATER FOREST	AREP: Jeremy Harris	DIVISION/ GROUP	T	Dave Wilkins; Andrew Pattison (T)
	READ: Jeremy Harris; Stephen Hampton; Erin Grinde; Lizzy Mckeag; Doug Olive	DIVISION/GROUP	V	Angel Prieto
IDAHO COUNTY	Sheriff Brian Hewson	DIVISION/GROUP	X	Aaron Jones
		JUMBO		
		DIVISION /GROUP	Jumbo	Amanda Holt; Mike Manion (T)
7. PLANNING SECTION		b. BRANCH II- DIVISION/GROUPS		
CHIEF	Julie Shea; Mark Glos	DIVISION/GROUP		
SITUATION UNIT	Jason Willoughby (T)	DIVISION/GROUP		
RESOURCES UNIT	Patty Bates	DIVISION/GROUP		
DEMOB UNIT	Jode Boyles Briggs	c. BRANCH III- DIVISIONS/GROUPS		
FIRE BEHAVIOR:	Andrew Myhra (T)	BRANCH DIRECTOR		
STRATEGIC OP PLANNER	Todd Opperman	DEPUTY		
LONG TERM ANALYST	Jon Rieck	DIVISION/GROUP		
INCIDENT METEROLOGIST	Jimmy Taeger	DIVISION/GROUP		
COMPUTER SPECIALIST		DIVISION/GROUP		
GIS SPECIALIST	Joel Harrison; Eyler White (T)	DIVISION/GROUP		
TRAINING SPECIALIST		DIVISION/GROUP		
		d. AIR OPERATIONS BRANCH		
8. LOGISTICS SECTION		BRANCH DIRECTOR	Jeff Polack	
CHIEF	Peter Pappas; Kimberly Burch (T)	AIR SUPPORT GROUP SUP		
DEPUTY		HELIBASE MANAGER	Sue Bissell	
a. SUPPORT BRANCH				
SUPPLY UNIT				
ORDERING MANAGER	Tim Stroope (T)			
FACILITIES UNIT	Tom Dauenhauer			
GROUND SUPPORT UNIT	Kyler McCarrel	10. FINANCE/ADMINISTRATION SECTION		
BASE CAMP MANAGER		CHIEF	Wendy McCartney	
b. SERVICE BRANCH		COST UNIT	Joyce Anderson; Jane Taylor (T)	
MEDICAL UNIT	Connie Weeks; Rosemary Myers (T)	TIME UNIT	Marti Miller; Sherise Foster (T)	
FOOD UNIT	Allen Long	EQUIPMENT TIME	Barbara Hogg	
COMMUNICATION UNIT	Todd Orr; Chris Gentili	PERSONNEL TIME	Debora Rendleman	
		INCIDENT BUSINESS SPECIALIST	Julie Campbell; Chuck Tapia (T)	
PREPARED BY: <i>Patty Bates</i>				



Fire Weather Forecast

FORECAST NO: 28
PREDICTION FOR: Thursday
SHIFT DATES: Aug 5, 2021
FORECAST ISSUED: 1800 August 4, 2021

NAME OF FIRE: Dixie/Jumbo
UNIT: ID-NCF NR FMT Team 5
IMET: Jimmy Taeger (208) 577-1624

Red Flag Warning 8AM-11PM Thursday for Strong/Erratic Winds & Dry Thunderstorms

WEATHER DISCUSSION: The first of a few disturbances moving quickly over the region will create erratic and strong winds and a chance of storms Thursday morning through the evening. Some storms may generate dry lightning, and could produce wind gusts greater than 50 mph. Showers will continue late Thursday into the end of the week, with cooler weather expected.

WEATHER FORECAST TODAY (THURSDAY):

	Dixie (5,600 ft)	Mallard Creek (5,400 ft)	Mariah RAWS (3,400 ft)
Max/Min Temp.	84F / 55F	83F / 54F	90F / 61F
Min/Max RH	30% / 59%	32% / 64%	28% / 55%
Day Winds (20 foot)	W-SW winds 10 to 15 mph gusting to 20 mph in afternoon. Gusty and erratic winds near thunderstorms.	W-SW winds 10 to 15 mph gusting to 20 mph in afternoon. Gusty and erratic winds near thunderstorms.	W-SW winds 7 to 12 mph gusting to 18 mph in afternoon. Gusty and erratic winds near thunderstorms.
Night Winds (20 foot)	Becoming down drainage 2 to 4 mph after 2100. Gusty and erratic winds near thunderstorms. Moderate inversion.	Becoming down drainage 2 to 4 mph after 2100. Gusty and erratic winds near thunderstorms. Moderate inversion.	Downslope/downvalley winds 2-4 mph after 2100. Gusty and erratic winds near thunderstorms.
Notes	Isolated gusts near thunderstorms could be greater than 50 mph.	Isolated gusts near thunderstorms could be greater than 50 mph.	Isolated gusts near thunderstorms could be greater than 50 mph.

WEATHER: Morning smoke and fog in drainages becoming hazy during day. Showers and thunderstorms increasing throughout the day, some of which could have strong and erratic wind gusts and dry lightning.

LAL: 3 **CWR:** 30% **HAINES:** 5

STABILITY / INVERSION: Moderate night time inversion below active fire area. Mixing by 1100.

SMOKE TRANSPORT WINDS: South southwest 10 to 20 mph in afternoon.

Sunset Thursday 2003

Sunrise Friday 0530

Sunset Friday 2002

OUTLOOK FOR FRIDAY (Dixie 5,600 FT): Showers and thunderstorms a times throughout the day, then diminishing late in the day Winds westerly 10 to 15 mph. Max Temps 72 to 75F. Min RH: 45%. Max RH: 90%. LAL 2. CWR 30%. Haines 3.

THREE DAY EXTENDED (Dixie 5,600 FT)

	<u>Max T</u>	<u>Min RH</u>	<u>Max RH</u>	<u>Ridge Winds</u>	<u>WX</u>	
SAT	75	35%	85%	WSW 15 to 25 mph	None	LAL 1
SUN	72	42%	80%	W 15 to 20 mph	Iso showers	LAL 2
MON	73	35%	75%	NW 5 to 10 mph	None	LAL 1

FIRE BEHAVIOR FORECAST

FORECAST NUMBER: 28	TYPE OF FIRE: Wildland Fire
FIRE NAME: Dixie/Jumbo	OPERATIONAL PERIOD: Thursday, August 5th, 2021
DATE ISSUED: 8/4/21	TIME ISSUED: 1900
UNIT: USFS-ID-NCF	SIGNED: Andrew Myhra – FBAN(t)

INPUTS

WEATHER SUMMARY: Thunderstorms beginning as early as 1100, potential to produce gusty and erratic winds gusting up to 50 mph. 30% CWR Today: Highs – mid 80s to low 90s; Low RH – high 20s to mid 30s

OUTPUTS

FIRE BEHAVIOR

GENERAL:

- Gusty and erratic outflow winds may produce isolated and/or group torching.
- Maximum spotting potential 1/3 mile from midslope source and up to 1/2 mile from ridgetop source.
- Fuel beds in closed canopy mixed-conifer are only moderately receptive. PIG 40%
- Under dense canopy in the mixed conifer, dead fuel moistures should remain above critical thresholds.
 - 10hrs – 8% : 100hrs – 9% : 1000hrs – 12%
- Live fuels moistures gathered and measured at Red River RAWs on 7/30:

1000 hr	Beargrass	Doug-fir	Grand-fir	Kinnikinnik	Lodgepole	Ponderosa
7%	133%	109%	151%	127%	144%	119%
- Greater concern with fire activity on existing spots and uncontained fireline than on longer range spotting.
- Isolated smokes evident interior and along uncontained fire perimeter during today's operational period.
- With the surfacing of predicted winds, fire along the perimeter could produce Flamelengths 4-5 ft and ROS 5-8 ch/hr.
- Wind shifts from outflow winds could produce unexpected short uphill runs when alignment with slope occurs.

SPECIFIC:

Division C: Consumption of remaining heavy fuels and areas of duff will continue to eliminate ignition sources. In places where ignition sources remain and are adjacent to light fuels, outflow winds associated with dry cells could lead to growth in unexpected directions such as downslope runs.

Division F: Isolated heat in the Comstock Creek drainage remains a concern, but the drainage will be sheltered from general winds.

Division T: Patchy "dirty" burn areas north of the 1190 rd may exhibit increased activity during elevated winds. Unidentified spotfires outside the main fire front could develop increased fire activity rapidly with wind input.

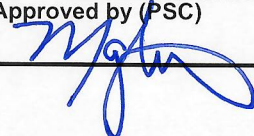
Division X: Active perimeter high in the Noble Creek drainage and south toward Mallard Creek. The consolidated area of heat along this perimeter could produce short downhill runs given the passage of dry thunderstorms. Otherwise this area will be mostly sheltered from general winds. Potential for 1/3 to 1/2 mile spotting.

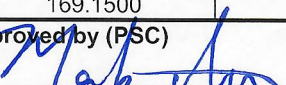
Division V: Continuous stands of heavy mixed-conifer between the indirect line and the main fire's edge.

Jumbo Fire: Scouting yesterday identified no areas of heat along the west side of the fire.

AIR OPERATIONS: Sunset 2003. Sunrise Friday 0530. Moderate inversion mixing by 1100.

FIRE BEHAVIOR SAFETY: Outflow winds can be experienced in excess of 20 miles from thundercells. These winds can be very unpredictable and shift direction quickly and repeatedly. High gusts can blow embers across the line or throw burning snags into unburned fuels.

ASSIGNMENT LIST				1.Branch DIXIE		2. Division/Group DIV F	
3. Incident Name DIXIE / JUMBO				4. Operational Period: DAY Date: August 5, 2021 Time: 0600-2000			
5. Operations Personnel							
Operations Chief		Ashley Sites; Kevin Smith; Nick Stanzak (T)		Division/Group Supervisor		Matt Nelson; Tom McLeod (T)	
Branch Director				Air Operations Director Air Attack Supervisor		Jeff Polack	
6. Resources Assigned This Period							
Strike Team/Task Force/ Resource Designator	Last Shift	Leader	No. Pers.	EMT	Trans. Needed	Drop Off PT./Time	Pick Up PT./Time
C-33 HC2 R&R Contracting	8/10	Chris Rocha	20		N	ICP/0600	ICP/2000
E-1 HETF Elk Ridge Ranch	8/13	Scott Anderson	8		N	ICP/0600	ICP/2000
E-117 ENG6 Forestry & Fire TGF	8/5	Forrest Baker	3	X	N	ICP/0600	ICP/2000
E-157 ENG6 Hurricane RFD	8/5	Tyler Hirschfeld	4	X	N	ICP/0600	ICP/2000
E-167 ENG6 Three Rivers	8/9	Tommy Diaz	3		N	ICP/0600	ICP/2000
E-174 ENG6 BLM Engine 5646	8/11	Truett Anderson	4	X	N	ICP/0600	ICP/2000
E-175 ENG6 Oklahoma	8/12	Clayton Hurst	2		N	ICP/0600	ICP/2000
E-176 ENG6 Verde Valley	8/16	Tucker Ihrman	3		N	ICP/0600	ICP/2000
E-15 WTS2 Lance LLC	8/12	John Hale	1		N	ICP/0600	ICP/2000
E-132 WTS2 Moranville	8/13	Mark Lock	1		N	ICP/0600	ICP/2000
E-99 SKG2 Skidgeon	8/12	Jaylord Rammell	2		N	ICP/0600	ICP/2000
E-102 Log Loader Mark Anderson	8/6	Barry Knapp	2		N	ICP/0600	ICP/2000
E-108 DOZ3 Flash Excavation	8/10	Gordon Eckel	1		N	ICP/0600	ICP/2000
O-224 HEQB Tom Franklin	8/7		1		N	ICP/0600	ICP/2000
O-294 HEQB Matt Batton (T)	8/12		1		N	ICP/0600	ICP/2000
O-256 Squad Red River Bravo	8/7	Joe Anderson	4		N	ICP/0600	ICP/2000
O-222 FELB Ben Jongeward	8/8		1		N	ICP/0600	ICP/2000
O-288 FAL Brothers Fire	8/10	Dave Hiatt	1		N	ICP/0600	ICP/2000
O-289 FAL Brothers Fire	8/10	Mike Worley	1		N	ICP/0600	ICP/2000
O-287.7 SOF2 Leroy Holguin (T)	8/17				N	ICP/0600	ICP/2000
7. Control Operations							
<p>Task: Continue to patrol and monitor fire threat to the areas of Dixie, Black Diamond and Comstock. Create indirect fuel break on Forest road 1188. Take action as necessary to point protect values and maintain egress on road systems.</p> <p>Purpose: Maintain egress and protect values at risk.</p> <p>End State: Access is maintained to the Dixie/Comstock area and values at risk are protected.</p>							
8. Special Instructions:							
<p>Identify resources for initial attack</p> <p>Coordinate actions with READs</p>							
9. Division/Group Communication Summary							
Function	Frequency - RX	Frequency - TX	Tone		Channel	Repeater assignments are suggestions. If another repeater works better, use it.	
Command 7	170.0125	165.2500	110.9		7		
Tactical	168.6000	168.6000	110.9		3		
Air to Ground CMD	168.4000	168.4000			13		
Air to Ground TAC	169.1500	169.1500			14		
Prepared by (RESL) Patty Bates		Approved by (PSC) 			Date August 4, 2021		Time 2100

ASSIGNMENT LIST				1.Branch Dixie		2. Division/Group DIV T	
3. Incident Name DIXIE / JUMBO			4. Operational Period: DAY Date: August 5, 2021 Time: 0600-2000				
5. Operations Personnel							
Operations Chief		Ashley Sites; Kevin Smith; Nick Stanzak (T)		Division/Group Supervisor		Dave Wilkins; Andrew Pattison (T)	
Branch Director				Air Operations Director Air Attack Supervisor		Jeff Polack	
6. Resources Assigned This Period							
Strike Team/Task Force/ Resource Designator	Last Shift	Leader	No. Pers.	EMT	Trans. Needed	Drop Off PT./Time	Pick Up PT./Time
C-34 HC2 Wy'east Wildland	8/11	Andrew Williamson	20		N	ICP/0600	ICP/2000
O-255 Salmon River Module*	8/9	Jordan Francom	10		N	ICP/0600	ICP/2000
Grangeville Helitack*	8/5	Logue	6		N	ICP/0600	ICP/2000
E-4 ENG6 Metal Works	8/13	Francis Pepione	3		N	ICP/0600	ICP/2000
E-85 ENG6 Cougar	8/16	Cathy Reilly	3		N	ICP/0600	ICP/2000
E-149 ENG6 Griffith	8/5	William Griffith	3		N	ICP/0600	ICP/2000
E-150 ENG6 Crane	8/5	Don Crane	2		N	ICP/0600	ICP/2000
E-16 WTS2 Flash EX	8/6	Gordon Echel	1		N	ICP/0600	ICP/2000
E-101 WTS2 Big Cedar	8/7	Blaine Palmer	1		N	ICP/0600	ICP/2000
E-99 SKG2 Rammell	8/12	Jaylord Rammell	2		N	ICP/0600	ICP/2000
E-104 HETF Aaron Downing Logging	8/6	Aaron Downing	8		N	ICP/0600	ICP/2000
E-130 HETF Bonnalie Logging	8/14	Nita Lorentz	12		N	ICP/0600	ICP/2000
E-18 Log Loader Cox	8/15	Marvin Gregg	2		N	ICP/0600	ICP/2000
E-97 MAST Downing Logging	8/4	Wes Renee	2		N	ICP/0600	ICP/2000
E-127 DOZ3 McColloch	8/11	Jacob Prow	1		N	ICP/0600	ICP/2000
E-163 MAST Bonnalie Logging	8/6	Eric Mader	2		N	ICP/0600	ICP/2000
NCF Grader*		Kevin Teats	1		N	ICP/0600	ICP/2000
O-295 HEQB Max Woehle (T)	8/11		1		N	ICP/0600	ICP/2000
O-293 HEQB Ryan Rectenwald (T)	8/12		1		N	ICP/0600	ICP/2000
O-298 HEQB Karl Honkonen (T)	8/13		1		N	ICP/0600	ICP/2000
O-217 TFLD Michael Gutierrez	8/7		1		N	ICP/0600	ICP/2000
O-218 TFLD Dane Ostler	8/7		1		N	ICP/0600	ICP/2000
O-236 TFLD Nick Maki (T)	8/7		1		N	ICP/0600	ICP/2000
E-128 Ambo 1 Wilderness Ambulance	8/10	Alex Helm	2		N	DP1	DP1
O-287.7 SOF2 Leroy Holquin (T)	8/17		1		N	ICP/0600	ICP/2000
7. Control Operations							
<p>Task: Monitor for spots outside the slop over. Install hose lays and sprinklers as necessary to contain slop over. Assist holding and mop-up from DP1 to DP7 as necessary.</p> <p>Purpose: Keep fire from crossing Red River drainage and point protect values at risk.</p> <p>End State: Slop over/spot fires are contained and the main fire is held to the south of Dixie Road. Access along Jack Mountain Road and Forest Road 421 to Whitewater Ranch remains open.</p> <p>* local Forest resource</p>							
8. Special Instructions:							
Identify resources available for IA							
9. Division/Group Communication Summary							
Function	Frequency - RX	Frequency - TX	Tone		Channel	Comments Repeater assignments are suggestions. If another repeater works better, use it.	
Command 9	169.8125	164.6750	110.9		9		
Tactical	168.2000	168.2000	110.9		2		
Air to Ground CMD	168.4000	168.4000			13		
Air to Ground TAC	169.1500	169.1500			14		
Prepared by (RESL) Patty Bates		Approved by (PSC) 			Date August 4, 2021		Time 2100

1. INCIDENT NAME:	2. OPS PERIOD DATE:	START TIME:	END TIME:	SUNRISE	SUNSET:	Pumpkin: for returning to base
Dixie / Humpo Fires	08/05/2021	0800	2100	0529	2004	Prepared Time: 2000
Prepared By: Jeff Polack						
ICS-220 AIR OPERATIONS SUMMARY						
3. REMARKS (Safety Notes, Hazards, Air Operations Special Equipment, etc.):						
Assess mission complexity and the Benefit/Risk of the mission. Ensure visibility and winds are adequate to safely conduct flight operations. Ensure safe vertical & horizontal separation between aircraft in smokey conditions. Call in and out of the dips. Beware of general aviation in Salmon River corridor. Smoky conditions can hamper aviation operations, adhere to visibility limitations, and DO NOT be pressured into accepting a mission that you know or feel is unsafe! <i>Terminate operational rotorwing no later than sunset.</i>						
4. READY ALERT AIRCRAFT: H.B.205PT, Payette S.H. Contact GVC with mission details. Hospitals: -Syringa General land Grangeville at GIC to meet ambulance. -St. Joseph's Regional 46° 25.02 'x 117° 01.45' Rooftop T-III Pad.						
5. TFR's: Dixie Fire: 1/5565 Freq:124.25 Polygon, Altitude: Surface to 11,000 MSL						

6. POSITION	NAME	PHONE #	7. FREQUENCIES	AM	FM	8. Aircraft Ordering Protocol
Forest Aviation Officer	Willy Acton	208-507-0942	A/G 1 Primary A/G 2 Secondary		168.4000 169.1500	Air Attack Platforms: Located GIC
NCF Dispatch	Aircraft Desk	208-983-6803	Take Off/Landing		169.475	AIRTANKERS/SCOOPERS Order thru Air Attack/Line Operation
AOBD	Jeff Polack	208-816-3447	A/A Helicopters A/A F/W A/A Briefing	126.3000 124.2500 132.7000		SEATS Order thru Air Attack/Line Operations
AOBD			Command from Mullins HB CMD-8		170.9750Rx 168.7000Tx 110.9TT	AIR ATTACK Order thru Line Operations to Helibase to Aircraft Desk in Grangeville
HEBM Mullins HLB	Susan Bissell	208-842-2671 (landline)	EMS 2 (Ch. 15 in I-205)		155.2800Rx 155.2800Tx 156.7TT	Helicopters Order thru Division Supervisor to Helibase. Additional helicopters available through Grangeville.
HMGB Tolo Helibase	John Abernathy	720-837-9591	National Flight Follow		168.6500 110.9 TX/RX	
Air Attack	Ken Stump	XXX-XXX-XXXX	AIR GUARD		168.6250 110.9 TX/RX	
NOTES: Mullins HLB: 45° 43.3' x 115° 22.2' Elevation: 4299' Tolo HLB: 45° 55.003' x 116° 11.446' Elevation: 3343' PLANNED MISSIONS:Recons,Buckets and Cargo Support Local I.A. whenever possible.						
IA FIRE FREQUENCIES: See Knee Board. Do not launch without one!						
Email Dixie Aircraft Costs Daily to: joyce_anderson@firenet.gov 2021.dixie.finance@firenet.gov, jeffrey_polack@firenet.gov						

9. HELICOPTERS

CALL SIGN/ FAA N#	TY	MAKE/MODEL	BASE	Start	Avail	REMARKS	CALL SIGN/ FAA N#	TY	MAKE/MODEL	BASE	Start	Avail	REMARKS
303AJ	1	CH-47D	Tolo	0900	0930	Buckets	3181F	2	UH-1F	Mullins	0800	0830	Buckets, external cargo *Forest prepo resource*
205PT	2	B-205	Mullins	0800	0830	Buckets, Cargo, PAX							

INCIDENT RADIO COMMUNICATIONS PLAN I-205				1. INCIDENT NAME		2. DATE/TIME PREPARED		3. OPERATIONAL PERIOD DATE/TIME			
				Dixie/Jumbo Fire		8/4/2021		8/5/2021 0600 to 2000			
4. BASIC RADIO CHANNEL UTILIZATION											
Ch #	Function	Channel Name	Assignment	RX Freq	NW	RX Tone/NAC	TX Freq	NW	TX Tone/NAC	Mode Analog (A) Digital (D) Mixed (M)	Remarks
1	TACTICAL	TAC 1	DIV V	168.0500	N	110.9	168.0500	N	110.9	A	DIVISION VICTOR
2	TACTICAL	TAC 2	DIV T	168.2000	N	110.9	168.2000	N	110.9	A	DIVISION TANGO
3	TACTICAL	TAC 3	DIV F	168.6000	N	110.9	168.6000	N	110.9	A	DIVISION FOXTROT
4	TACTICAL	TAC 4	JUMBO	168.2500	N	110.9	168.2500	N	110.9	A	JUMBO
5	TACTICAL	TAC 5	DIV C	166.7250	N	110.9	166.7250	N	110.9	A	DIVISION CHARLIE
6	TACTICAL	TAC 6	DIV X	166.7750	N	110.9	166.7750	N	110.9	A	DIVISION XRAY
7	COMMAND	CMD 7	DIV FV	170.0125	N	110.9	165.2500	N	110.9	A	OREGON BUTTE LOOKOUT
8	COMMAND	CMD 8		170.9750	N	110.9	168.7000	N	110.9	A	
9	COMMAND	CMD 9	DIV TX	169.8125	N	110.9	164.6750	N	110.9	A	BOSTON MOUNTAIN
10	COMMAND	CMD 10	DIV C	171.8875	N	110.9	162.1875	N	110.9	A	SHEEPEATER LOOKOUT
11	COMMAND	CMD 11	DIV FV	171.4125	N	110.9	164.6000	N	110.9	A	MOOSE BUTTE
12	LOCAL FS NET	OREBUTTE	ALL DIV	173.1375	N	0.0	166.2000	N	127.3	A	NEZ EAST REPEATER
13	AIR TO GROUND	A/G CMD	ALL DIV	168.4000	N	0.0	168.4000	N	0.0	A	A/G COMMAND
14	AIR TO GROUND	A/G TAC	ALL DIV	169.1500	N	0.0	169.1500	N	0.0	A	A/G TACTICAL
15	AIR AMBULANCE	EMS 2	EMERGENCY	155.2800	N	0.0	155.2800	N	0.0	A	STATE COMM/AIR AMBULANCE
16	AIR GUARD	AIRGUARD	EMERGENCY	168.6250	N	0.0	168.6250	N	110.9	A	EMERGENCY USE ONLY
5. Special Instructions:											
6. I-205 Prepared By: Communications Unit Leader				Name:				TODD ORR (COML)			
								Signature: <i>Todd Orr</i> COML			



Safety Message

Major Hazards and Risks: Red Flag Warnings, Getting Hotter and Drier

RED FLAG WARNING: Forecasted Red Flag Warning for High Winds with gusts to approximately 40 to 50 mph. High winds can lead to an increase in fire behavior. Winds of this nature can also cause standing dead and live trees in the area to fall. Ensure that you are aware of your Escape Routes and Safety Zones and that they are adequate for your resources. Reference "Important Winds to Firefighters" pgs. 70-71 in the IRPG and "Hazard Tree Safety" pgs. 22-23.

WEATHER BECOMING HOTTER AND DRIER: Weather is getting hotter and drier additionally after receiving precipitation. Pay particular attention to an increase in fire behavior with smokes popping up earlier in the day and with increased volume of smoke.

COVID-19

- **Social Distancing** - Maintain 6' foot distance whenever possible.
- **Wear a mask** – For everyone's safety "wear a mask" when riding in vehicles in groups of more than one not part of your "Module of One" and social distancing is not possible.
- **Wash Hands**- Wash hands frequently using soap and water or use hand sanitizer if needed.
- **Watch for symptoms** - Watch personnel for cough, headache, loss of taste or smell, temperature, shortness of breath.
- **Use Common sense**- If sick, stay home, and report illness. Avoid crowded locations.
- **Monitor**- CDC web site provides updated information. Local health department.

Be Mindful About Safety in all Your Actions

Northern Rockies Team 5

DIXIE/JUMBO FIRE

Incident within an Incident Emergency Action Plan

In the case of a serious accident requiring patient transport to a medical facility:

- The closest ranking Operations Leader (i.e., Division Supervisor) at the accident scene will take charge and be the Point of Contact (POC).
- Use the 8-line protocol to assess patient; if patient evaluation is either red or yellow use **Dixie Fire Command Frequency Identified for the Division the IWI is occurring on.** Air extraction resources will use Air to Ground tactical or Air Ambulance EMS2.
- If incident should occur outside the Dixie/Jumbo Fires contact 911 and Dixie Communications on Command frequency for monitoring and support and to notify whether patient is incident personnel or civilian.
- Patients evaluated as Green notify nearest supervisor of the location of the incident and assigned EMT to determine treatment and transport to Medical Unit.
- Upon notification of a serious accident, the Following will report to the ICP Communications trailer: Incident Commander, Safety Officer, Operations Section Chief (Planning OPS), and Medical Unit Leader to monitor IWI. Safety Officer will notify Finance and/or Comp Claims of the IWI.
- Incident radio traffic will be monitored from 0500 to 2200 every day on Command at ICP.

Approved by: /s/ Joe Sampson

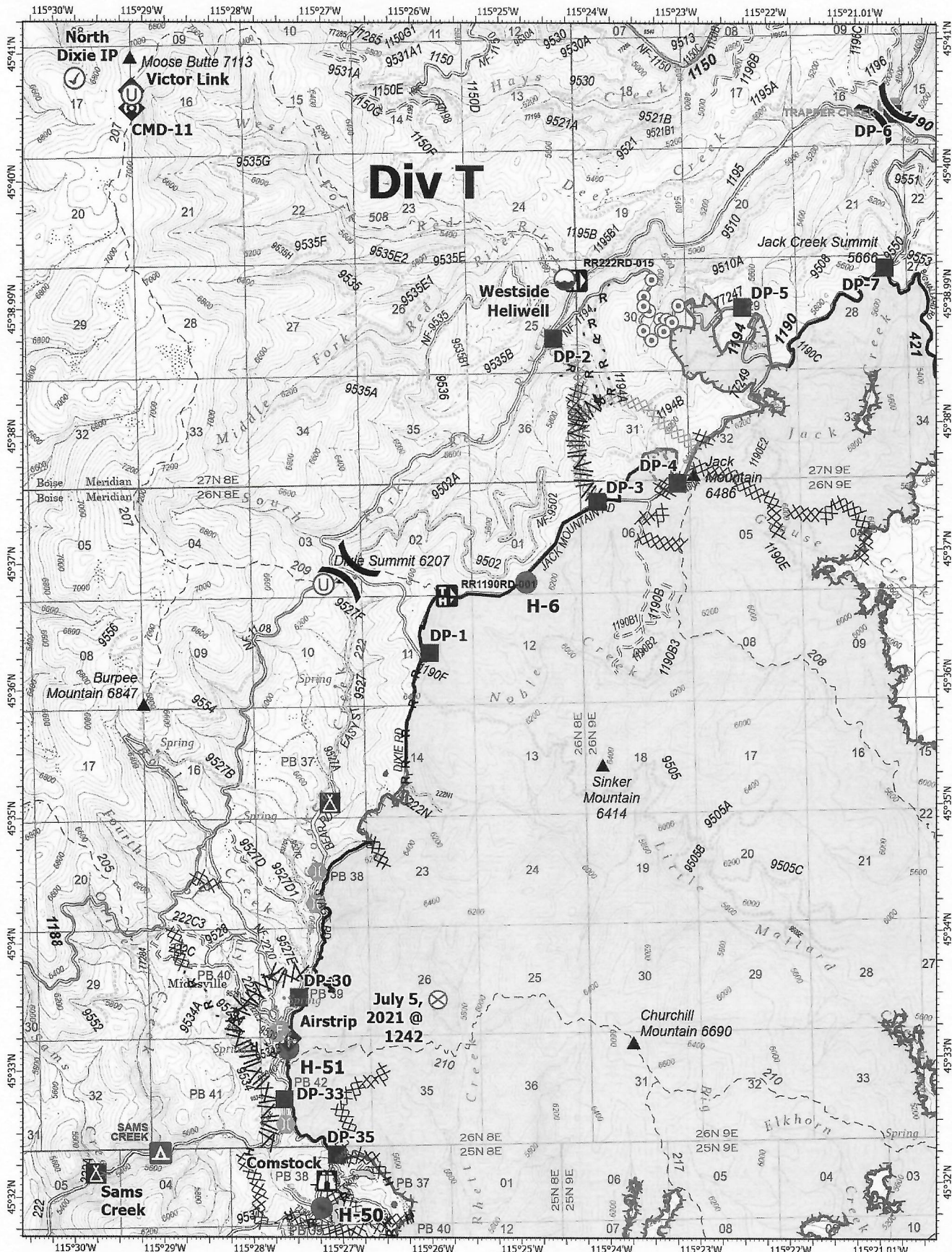
Incident Commander

Date: 08/01/2021

1. Incident/Project Name		2. Operational Period: August 05, 2021 0600-2000			
Dixie/Jumbo Fires		Date/Time 08/04/21 1500			
3. Ambulance Services					
Ambulance	Complete Address	Phone & EMS Frequency	Advanced Life Support (ALS) Yes No		
Elk City Ambulance	Elk City, Idaho	911 155.280			X
Wilderness Medics	Red River Base Camp	Command	X		
4. Air Ambulance Services					
Name	Phone	Type of Aircraft & Capability			
Life Flight Network	911 155.340 tan	Paramedics/Flight Nurse/Night vision			
2 Bear Air	911 155.340 tan	Hoist/Paramedics			
5. Hospitals					
Name Complete Address	GPS Datum – WGS 84 Coordinate Standard Degrees Decimal Minutes DD° MM.MMM' N - Lat DD° MM.MMM' W - Long	Travel Time Air Gnd	Phone	Helipad Yes No	Level of Care Facility
Syringa General Hospital 607 W. Main Grangeville, ID 83530	Lat:	30 Min 2 Hrs	208-983-5919 ER	<input type="checkbox"/>	<input checked="" type="checkbox"/>
	Long				
	VHF: 155.280 white				
					Critical Access Land at Airport
St. Luke's Medical Center McCall, Idaho	Lat:	45 Min	208-634-2221		X
	Long				
	VHF: 155.280 white				
					Critical Access Land at Airport
St. Joseph's Regional Medical Center 415 6 th St. Lewiston, Idaho 83501	Lat:	45 Min 3 Hrs	208-799-5799 ER	X	
	Long				
	VHF: 155.280 white				
					Level 3 Roof Top Pad
Community Medical Center 2827 Ft. Missoula Rd., Missoula, MT	Lat:	70 Min	406-327-4171 ER	X	
	Long				
	VHF: 155.280 white				
					Level 2 Ground Level Pad
Division Branch Group					
All Divisions:	Crew Supplies:	Crew EMTs:			
DIV C	N/A	Unstaffed with Medical Unit EMTs			
DIV F DP 1	ALS Ambulance	Wilderness Medics (Ambo 1) DP 1			
DIV T	ALS Ambulance	Wilderness Medics (Ambo 1) DP 1			
DIV X H 8	BLS kit, O2, TRS, KED	EMTF – Gilbert DP 7			
DIV V	N/A	Unstaffed with Medical Unit EMTs			
Jumbo	N/A	Unstaffed with Medical Unit EMTs			
Prepared by: Connie Weeks					
MEDL		Approved by: Dave Smith			

Division Supply Order Dixie/Jumbo Fire

Order Number:		Date -		Division -	
Order taken in Communications by:				RADO or COML confirmation:	
DIVS Supervisor:				Date & Time Needed:	
Delivery Contact:				Delivery Location:	
Cell Phone #:				UTM	
Radio Channel Number:				Lat: Long:	
Mode of Delivery (Circle Means):		Ground Support		DP/LZ:	
Division will pick up		Deliver to Helibase		Other:	
SPUL Confirmation can be filled as needed (Circle): Yes or No - Requiring at least 24 hours to fill.					
Item	Description:	Quantity	Comments		
	Hose Lay Kit , 1000 Feet = (10) 1 1/2" Hose; and 5 Each of: 1" Hose, 1 1/2" Wyes, 1 1/2" to 1" Reducers, and 1" Forester Nozzles				
1		1000 Feet	4	4000 Feet	
2		2000 Feet	5	5000 Feet	
3		3000 Feet	6	6000 Feet	
	Garden Hose Kit , 500 Feet = (10) 3/4" Hose, and (5 Each): 3/4" Wye, 3/4" Shutoff, 3/4" Nozzle, 1" Wye, and 1" to 3/4" Reducers)				
7		500 Feet	10	3000 Feet	
8		1000 Feet	11	4000 Feet	
9		2000 Feet	12	5000 Feet	
	Water Handling Equipment:		Item #	Description	Quantity
13	Hose: 1 1/2" (100')	LG		Line Tools:	
14	1" (100')	LG	40	Pulaski	EA
15	3/4" (50' Toy/Garden)	LG	41	Combi	EA
16	Gated Wye: 1 1/2"	EA	42	McCloud	EA
17	1"	EA	43	Shovel	EA
18	3/4"	EA	44	Water: Cubies	EA
19	Reducer: 1 1/2" X 1"	EA	45	Bottled	CS
20	1" X 3/4"	EA	46	Gatorade	CS
21	Nozzle: 1" Forester	EA	47	MRE's	BX
22	1" Mystery (KK)	EA	48	Flagging: Lime Green	RO
23	1 1/2" Red Barrel	EA	49	Pink	RO
24	3/4" Brass		50	Orange	RO
25	Shutoff Values: 3/4"	EA	51	Killer Tree	RO
26	Pumpkin or Porta-Tank, 1800 gal.	EA	52	Wrap, Structural	RO
27	Blivets, Slingable 55 Gal	EA	53	Other:	
28	Mopup Kits 3 Person	EA	54		
29	Backpack Pumps	EA	55		
30	Sprinkler Kits	EA	56		
31	Foam (5 GALS)	PL	57		
32	Mark III Kits	KT	58		
33	Drip Torch	EA	59		
34	Fusees (72/Case)	CS	60		
35	Chainsaw Kit	KT	61	Bar Oil	Gal
36	Fuel, 5 gallons:	Gas	Can	Diesel, 5 gallon	Can
37	Mark III (20:1)		Can	63	QT
38	Chainsaw (50:1)	Mixed	Can	64	BT
				65	BT
39	Drip Torch (3:2)		Can		



IAP Map

Dixie
ID-NCF-000448
08/05/2021

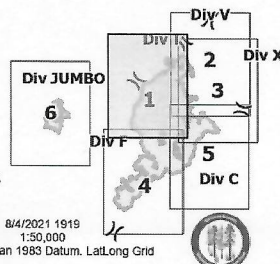
43,152 acres at 08/03/2021 21:00 PDT
Acres from IR and GPS

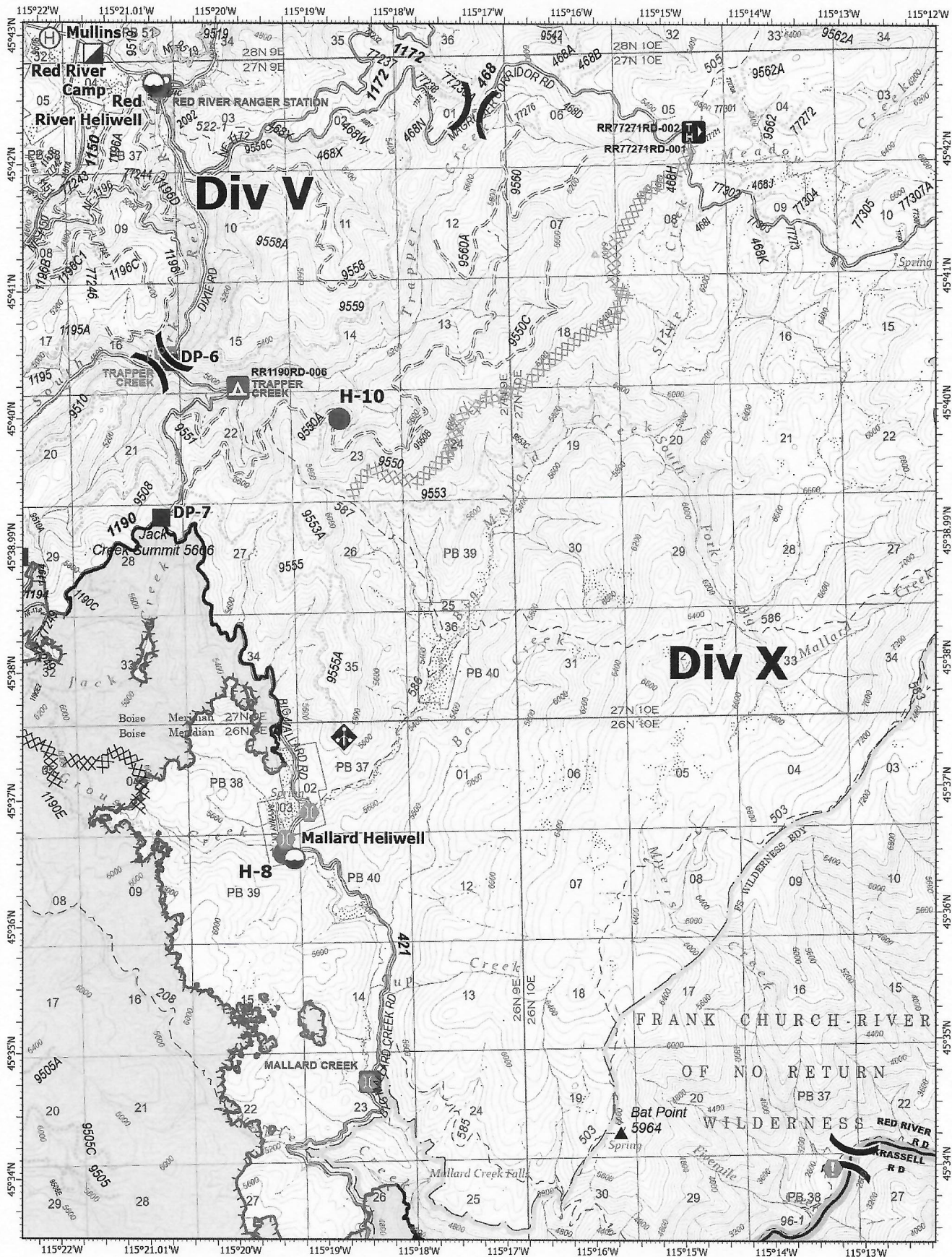
0 0.5 1 Miles

- ⊙ Check Point
- Dip Site
- ⊙ Helispot
- ⊙ Unimproved Landing Area
- ⊙ Division Break
- Drop Point
- ⊙ Camp
- ⊙ Lookout

- ⊙ Hot Spot - Spot Fire
- ⊙ Fire Origin
- ⊙ Fire Station
- ⊙ Bridge
- ⊙ Mobile Weather Unit
- ⊙ Repeater
- ⊙ Completed Dozer Line
- ⊙ Completed Fuel Break

- H Completed Hand Line
- R Completed Road as Line
- Planned Dozer Line
- Access or Improved Road
- Other
- Fire Edge
- Contained Line
- Wildfire Daily Fire Perimeter





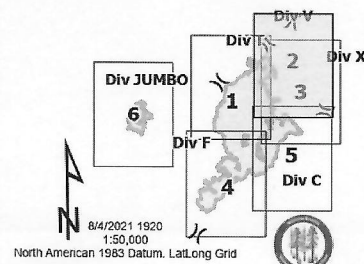
IAP Map

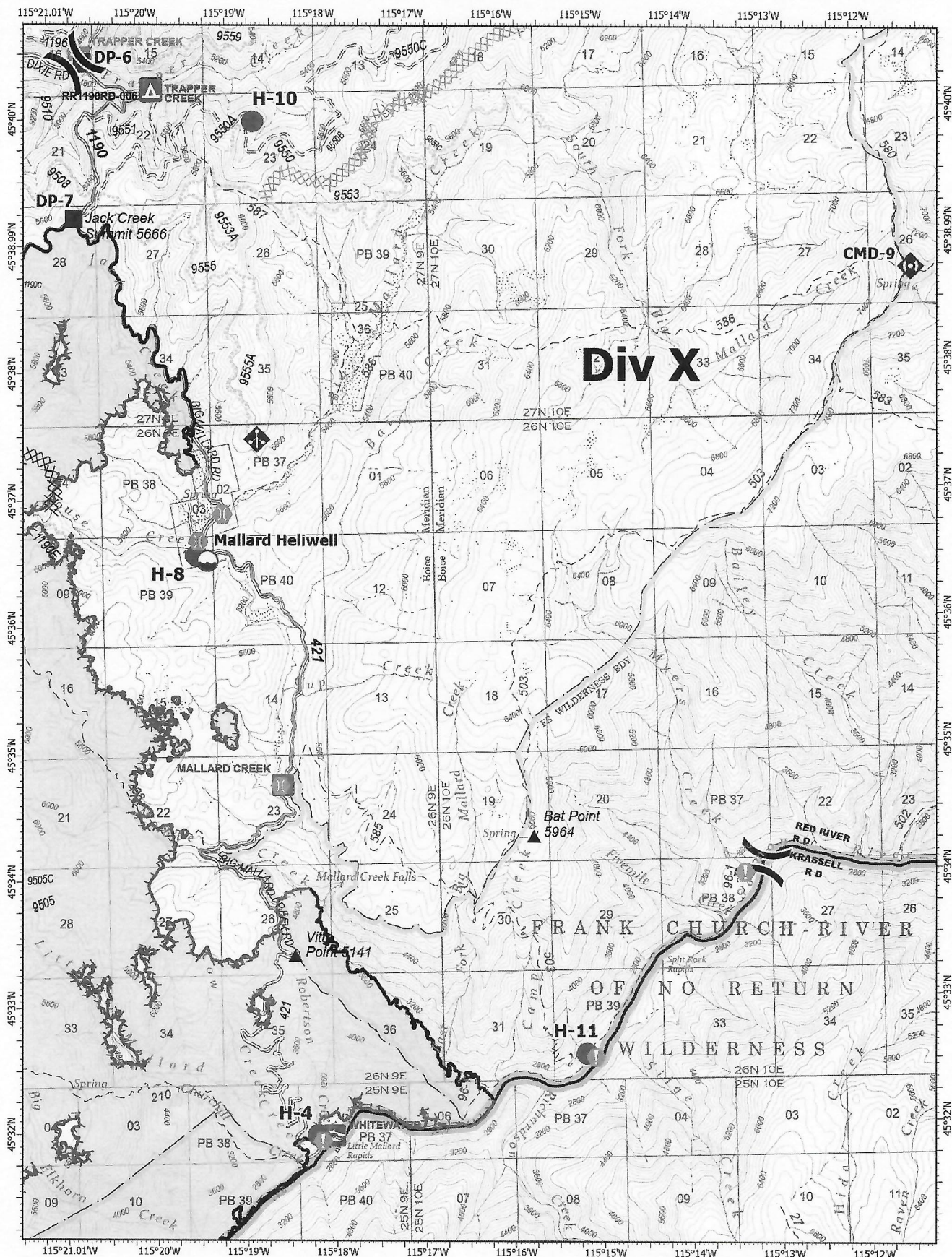
Dixie
ID-NCF-000448
08/05/2021

43,152 acres at 08/03/2021 21:00 PDT
Acres from IR and GPS

0 0.5 1 Miles

- Dip Site
- Helispot
- Helibase
- Division Break
- Incident Command Post
- Drop Point
- Value at Risk
- Bridge
- Structure Wrap
- Mobile Weather Unit
- Completed Dozer Line
- Completed Fuel Break
- Planned Dozer Line
- Fire Edge
- Contained Line
- Wildfire Daily Fire Perimeter





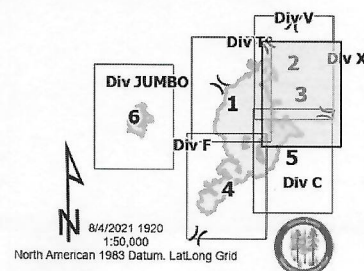
IAP Map

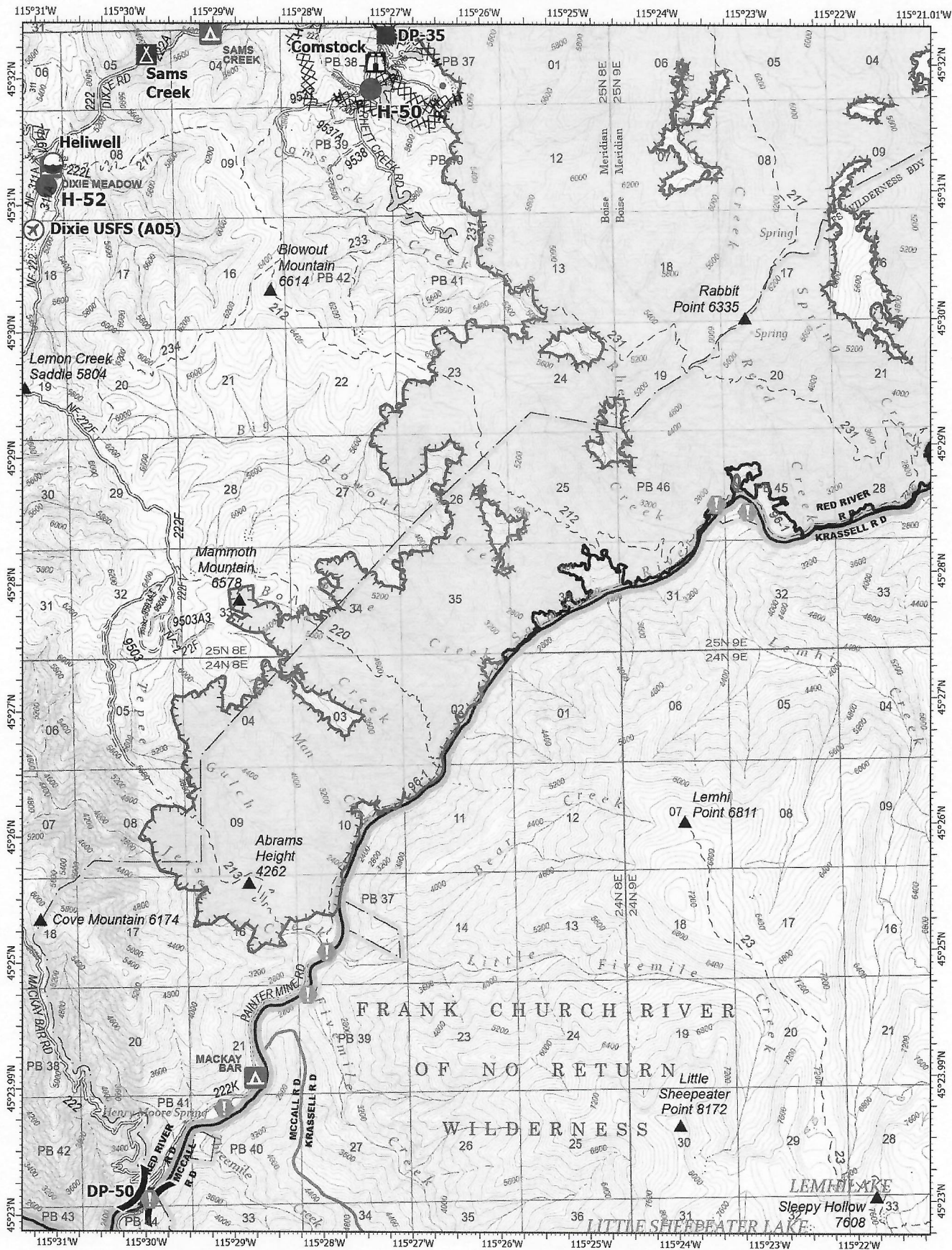
Dixie
ID-NCF-000448
08/05/2021

43,152 acres at 08/03/2021 21:00 PDT
Acres from IR and GPS

0 0.5 1 Miles

- | | |
|---------------------|-------------------------------|
| Dip Site | Repeater |
| Helispot | Completed Dozer Line |
| Division Break | Completed Fuel Break |
| Drop Point | Planned Dozer Line |
| Value at Risk | Fire Edge |
| Bridge | Contained Line |
| Structure Wrap | Wildfire Daily Fire Perimeter |
| Mobile Weather Unit | |





IAP Map

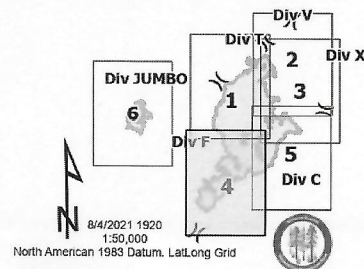
Dixie
ID-NCF-000448
08/05/2021

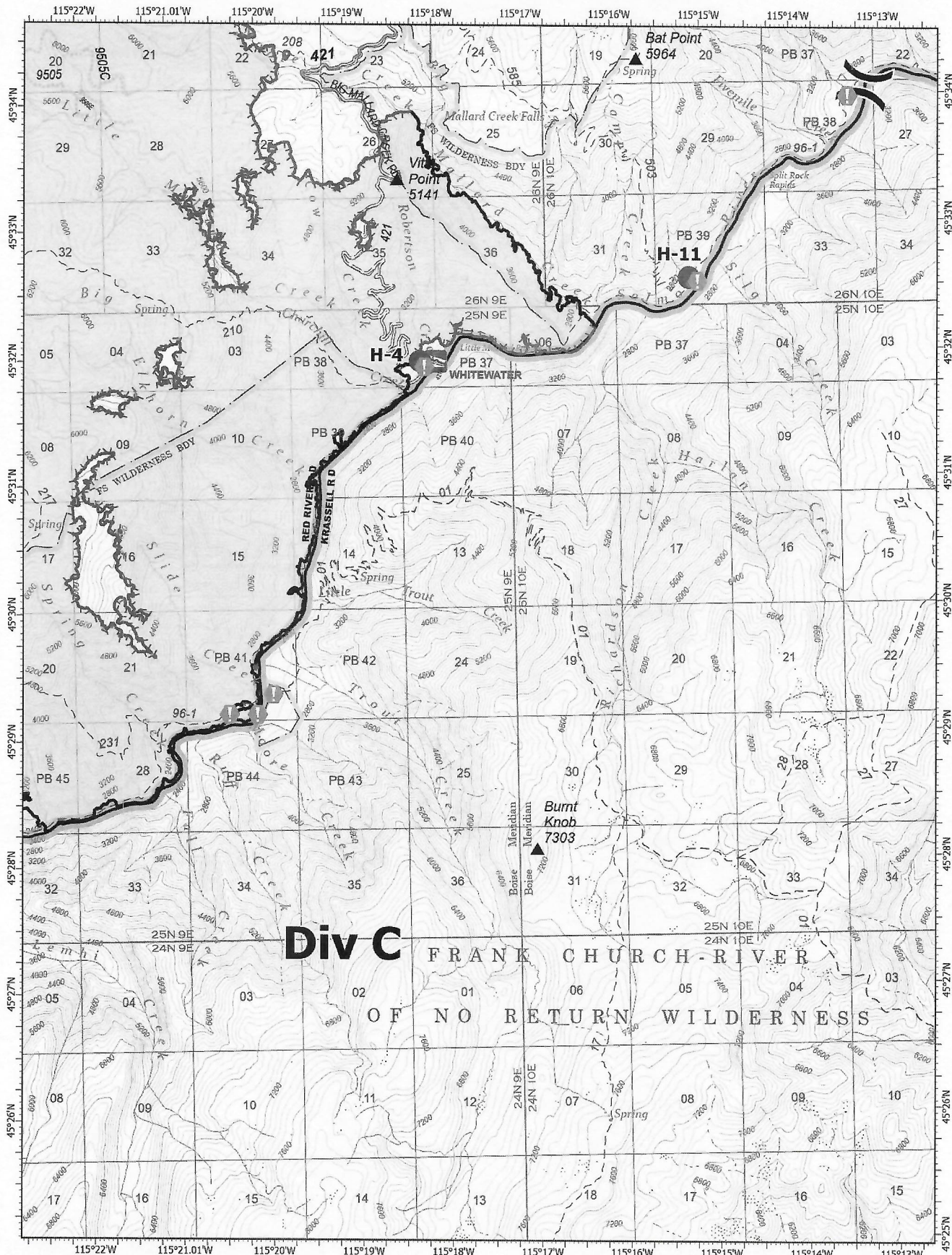
43,152 acres at 08/03/2021 21:00 PDT
Acres from IR and GPS

0 0.5 1 Miles

- ⊗ Airstrip or Airport
- Dip Site
- Helispot
- ⌋ Division Break
- Drop Point
- ⛑ Camp
- 🔍 Lookout
- ⚠ Value at Risk
- 🌉 Bridge

- ⌘ Completed Dozer Line
- ⌘ Completed Fuel Break
- H - Completed Hand Line
- R - Completed Road as Line
- Access or Improved Road
- Fire Edge
- Contained Line
- Wildfire Daily Fire Perimeter





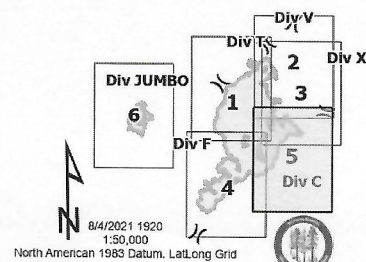
IAP Map

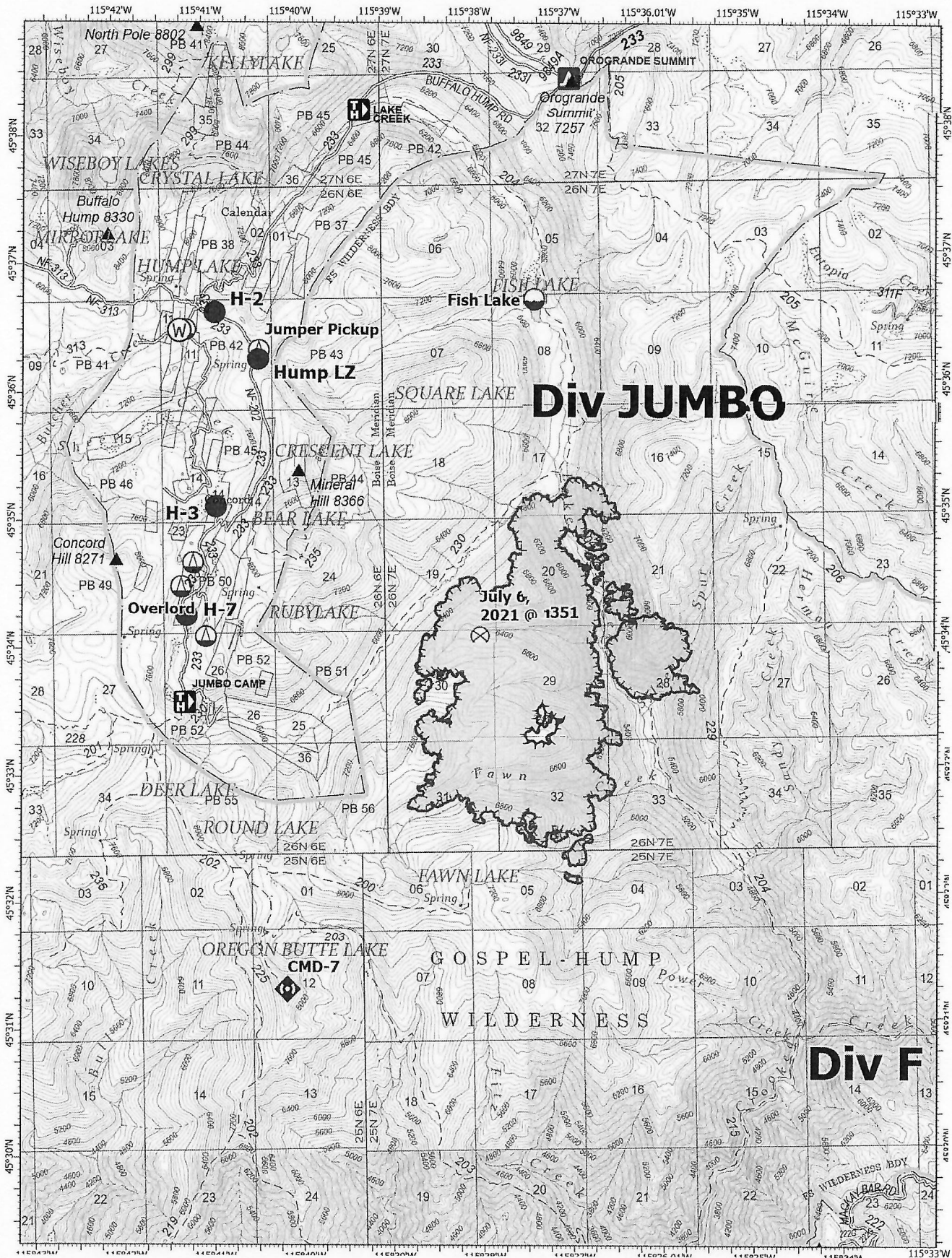
Dixie
ID-NCF-000448
08/05/2021

43,152 acres at 08/03/2021 21:00 PDT
Acres from IR and GPS

0 0.5 1 Miles

- Helispot
-)(Division Break
- ⦿ Value at Risk
- ⦿ Bridge
- ⦿ Structure Wrap
- ▬ Fire Edge
- ▬ Contained Line
- ▬ Wildfire Daily Fire Perimeter





IAP Map

Jumbo

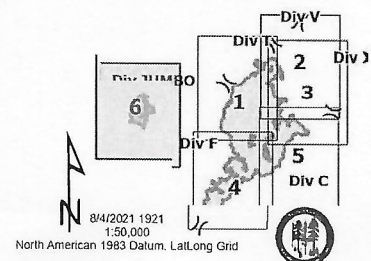
ID-NCF-000448

08/05/2021

2,646 acres at 08/03/2021 21:00 PDT
Acres from IR and GPS

0 0.5 1
Miles

- Dip Site
- Helispot
- Sling Site
- ⊗ Fire Origin
- ◆ Repeater
- ⊙ Water Source
- Fire Edge
- ▭ Wildfire Daily Fire Perimeter



Medical Incident Report – 8 Line

FOR A NON-EMERGENCY INCIDENT, WORK THROUGH CHAIN OF COMMAND TO REPORT AND TRANSPORT INJURED PERSONNEL AS NECESSARY.

FOR A MEDICAL EMERGENCY: IDENTIFY ON SCENE INCIDENT COMMANDER BY NAME AND POSITION AND ANNOUNCE **"MEDICAL EMERGENCY"** TO INITIATE RESPONSE FROM IMT COMMUNICATIONS/DISPATCH.

Use the following items to communicate situation to communications/dispatch.

1. CONTACT COMMUNICATIONS / DISPATCH (Verify correct frequency prior to starting report)

Ex: "Communications, Div. Alpha. Stand-by for Emergency Traffic."

2. INCIDENT STATUS: Provide incident summary (including number of patients) and command structure.

Ex: "Communications, I have a Red priority patient, unconscious, struck by a falling tree. Requesting air ambulance to Forest Road 1 at (Lat./Long.) This will be the Trout Meadow Medical, IC is TFLD Jones. EMT Smith is providing medical care."

Severity of Emergency / Transport Priority	<input type="checkbox"/> RED / PRIORITY 1 Life or limb threatening injury or illness. Evacuation need is IMMEDIATE <i>Ex: Unconscious, difficulty breathing, bleeding severely, 2° – 3° burns more than 4 palm sizes, heat stroke, disoriented.</i> <input type="checkbox"/> YELLOW / PRIORITY 2 Serious Injury or illness. Evacuation may be DELAYED if necessary. <i>Ex: Significant trauma, unable to walk, 2° – 3° burns not more than 1-3 palm sizes.</i> <input type="checkbox"/> GREEN / PRIORITY 3 Minor Injury or illness. Non-Emergency transport <i>Ex: Sprains, strains, minor heat-related illness.</i>	
Nature of Injury or Illness & Mechanism of Injury		Brief Summary of Injury or Illness (Ex: Unconscious, Struck by Falling Tree)
Transport Request		Air Ambulance / Short Haul/Hoist Ground Ambulance / Other
Patient Location		Descriptive Location & Lat. / Long. (WGS84)
Incident Name		Geographic Name + "Medical" (Ex: Trout Meadow Medical)
On-Scene Incident Commander		Name of on-scene IC of Incident within an Incident (Ex: TFLD Jones)
Patient Care		Name of Care Provider (Ex: EMT Smith)

3. INITIAL PATIENT ASSESSMENT: Complete this section for each patient as applicable (start with the most severe patient)

Patient Assessment:

See IRPG page 106

Treatment:

4. TRANSPORT PLAN:

Evacuation Location (if different): (Descriptive Location (drop point, intersection, etc.) or Lat. / Long.) Patient's ETA to Evacuation Location:

Helispot / Extraction Site Size and Hazards:

5. ADDITIONAL RESOURCES / EQUIPMENT NEEDS:

Example: Paramedic/EMT, Crews, Immobilization Devices, AED, Oxygen, Trauma Bag, IV/Fluid(s), Splints, Rope rescue, Wheeled litter, HAZMAT, Extrication

6. COMMUNICATIONS: Identify State Air/Ground EMS Frequencies and Hospital Contacts as applicable

Function	Channel Name/Number	Receive (RX)	Tone/NAC *	Transmit (TX)	Tone/NAC *
COMMAND					
AIR-TO-GRND					
TACTICAL					

7. CONTINGENCY: Considerations: If primary options fail, what actions can be implemented in conjunction with primary evacuation method? Be thinking ahead.

8. ADDITIONAL INFORMATION: Updates/Changes, etc.