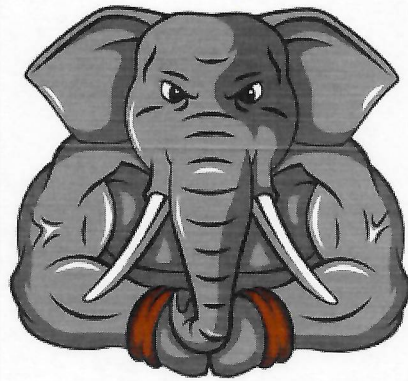


DIXIE FIRE

ID-NCF-000448

P1N402 (0117)



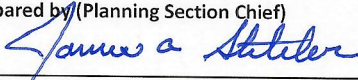

Jumbo Fire

INCIDENT ACTION PLAN

Sunday August 8, 2021



For IAP, Maps, Check-in and Demob

INCIDENT OBJECTIVES	1. Incident Name DIXIE / JUMBO	2. Date Prepared August 7, 2021	3. Time 2100
4. Operational Period: August 8, 2021 DAY OPERATIONS 0600 - 2000			
Incident Objectives <ol style="list-style-type: none"> 1. The Dixie and Jumbo fires will be managed using a variety of suppression strategies based on firefighter safety, availability of firefighting resource and threats to values at risk. 2. Maintain access for firefighting resources and public egress within the Dixie and Jumbo fires' planning area. 3. Execute strategies and tactics to reduce fire impacts to primary private and commercial structures, where possible. 4. Consider efforts to moderate fire behavior to reduce probability of disrupting primary distribution lines to affected communities and communication sites associated with emergency response. 5. Reduce negative impacts of fire management actions on cultural and natural features in the area, where safety and efficacy of suppression actions do not conflict with this objective. Order of priority: Nationally significant cultural resources, critical anadromous fish habitat and other sensitive watershed conditions identified by Agency Administrators. Incident Requirements <ol style="list-style-type: none"> 1. Utilize risk-informed decision making to reduce fire fighter exposure to hazards while providing for public safety. 2. Utilize pre-existing plans for community protection opportunities in North Star, Black Diamond, Comstock, Dixie, Mallard Ranch, Red River, Concord, Humptown, Frogtown, Fivemile Bar, Mackay Bar, and Copenhaver Ranch. 3. Obtain approval for use of mechanized equipment in the Gospel Hump and Frank Church – River of No Return Wilderness areas. 4. Document the quantity and placement of long-term retardant. Minimize the use of long-term retardant in designated wilderness areas, except to protect human life or to achieve point protection objectives. 5. Any mechanical equipment operations within Inventoried Roadless Areas need prior approval from Agency Administrator. 6. Provide current and accurate information to the media, public, and local office holders as to the status of fires within the complex. 7. Provide for rehabilitation of areas impacted by incident operations in coordination with jurisdictional agency's resource advisor(s). 			
6. Weather Forecast for Period: <i>See attached Fire Weather Forecast</i>			
7. General Safety Message: <i>See attached Safety Message</i>			
8. Attachments (mark if attached)			
<input checked="" type="checkbox"/>	ICS 203 Organization List	<input checked="" type="checkbox"/>	ICS 205 Communication Plan
<input checked="" type="checkbox"/>	Spot Weather Forecast	<input checked="" type="checkbox"/>	Safety Message
<input checked="" type="checkbox"/>	Fire Behavior Forecast	<input checked="" type="checkbox"/>	Division Supply Order
<input checked="" type="checkbox"/>	ICS 204 Division Assignment Lists	<input checked="" type="checkbox"/>	Incident within an Incident
<input checked="" type="checkbox"/>	ICS 220 Air Operations Summary	<input type="checkbox"/>	
9. Prepared by (Planning Section Chief) 		9. Approved by (Incident Commander) 	

ORGANIZATION ASSIGNMENT LIST		1. INCIDENT NAME	2. DATE PREPARED	3. TIME PREPARED
		DIXIE / JUMBO	8/7/21	2100
4. OPERATIONAL PERIOD: August 8, 2021 0600-2000				
5. INCIDENT COMMAND AND STAFF		9. OPERATIONS SECTION		
INCIDENT COMMANDER	Joe Sampson	PLANNING OPS: Ashley Sites		
INFORMATION OFFICER	Terina Goicoechea; Erik Broeder (T)	LINE OPS: Kevin Smith		
LIAISON OFFICER				
SAFETY OFFICER:	Charles Tuss; David Smith; Lee Hahnkamp (T); Leroy Holguin (T)			
6. AGENCY REPRESENTATIVES		DIXIE		
AGENCY	NAME	DIVISION/GROUP	C	Travis Clark; Ryan Green (T)
NEZ PERCE	AA: Cheryl Probert	DIVISION/ GROUP	F	Matt Nelson; Tom McLeod (T)
CLEARWATER FOREST	AREP: Zoanna Anderson	DIVISION/ GROUP	T	Dave Wilkins; Andrew Pattison (T)
	READ: Jeremy Harris; Stephen Hampton; Erin Grinde; Lizzy McKeag; Doug Olive	DIVISION/GROUP	X	Aaron Jones
IDAHO COUNTY	Sheriff Brian Hewson	DIVISION/GROUP		
		JUMBO		
		DIVISION /GROUP	Jumbo	
7. PLANNING SECTION		b. BRANCH II- DIVISION/GROUPS		
CHIEF	Mark Glos; Jim Stiteler	DIVISION/GROUP		
SITUATION UNIT	Jason Willoughby (T)	DIVISION/GROUP		
RESOURCES UNIT	Patty Bates	DIVISION/GROUP		
DEMOB UNIT	Jode Boyles Briggs			
FIRE BEHAVIOR:	Tami Parkinson; Andrew Myhra (T)	c. BRANCH III- DIVISIONS/GROUPS		
STRATEGIC OP PLANNER	Todd Opperman	BRANCH DIRECTOR		
LONG TERM ANALYST	Jon Rieck	DEPUTY		
INCIDENT METEROLOGIST	Jimmy Taeger	DIVISION/GROUP		
COMPUTER SPECIALIST		DIVISION/GROUP		
GIS SPECIALIST	Joel Harrison; Eyler White (T)	DIVISION/GROUP		
TRAINING SPECIALIST		DIVISION/GROUP		
8. LOGISTICS SECTION		d. AIR OPERATIONS BRANCH		
CHIEF	Peter Pappas; Kimberly Burch (T)	BRANCH DIRECTOR		Jeff Polack
DEPUTY		AIR SUPPORT GROUP SUP		
a. SUPPORT BRANCH				
SUPPLY UNIT				
ORDERING MANAGER	Tim Stroope (T)			
FACILITIES UNIT	Tom Dauenhauer			
GROUND SUPPORT UNIT	Kyler McCarrel			
BASE CAMP MANAGER		10. FINANCE/ADMINISTRATION SECTION		
b. SERVICE BRANCH		CHIEF		Wendy McCartney
MEDICAL UNIT	Connie Weeks; Rosemary Myers (T)	COST UNIT		Joyce Anderson; Jane Taylor (T)
FOOD UNIT	Allen Long	TIME UNIT		Marti Miller; Sherise Foster (T)
COMMUNICATION UNIT	Todd Orr; Chris Gentili; Jim Olivarez	EQUIPMENT TIME		Barbara Hogg
		PERSONNEL TIME		Debora Rendleman
		INCIDENT BUSINESS SPECIALIST		Julie Campbell; Chuck Tapia (T)
PREPARED BY: Patty Bates				



Fire Weather Forecast

FORECAST NO: 31
PREDICTION FOR: Sunday
SHIFT DATES: Aug 8, 2021
FORECAST ISSUED: 1800 August 7, 2021

NAME OF FIRE: Dixie/Jumbo
UNIT: ID-NCF NR FMT Team 5
IMET: Jimmy Taeger (208) 577-1624

WEATHER DISCUSSION: A cold front will generate showers and scattered thunderstorms on Sunday. Ridge winds could gust to 35 mph. A cool start to the week, then dry and warmer weather from the middle to the end of the week.

WEATHER FORECAST TODAY (SUNDAY):

	Dixie (5,600 ft)	Mallard Creek (5,400 ft)	Mariah RAWS (3,400 ft)
Max/Min Temp.	64F / 48F	62F / 47F	76F / 64F
Min/Max RH	35% / 90%	35% / 90%	25% / 70%
Day Winds (20 foot)	NW winds 15 to 20 mph with gusts to 30 mph. Strongest winds between 1100-2200.	NW winds 15 to 25 mph with gusts to 35mph. Strongest winds between 1100-2200.	NW winds 10 to 15 mph gusting to 20 mph. Strongest winds between 1200-2200.
Night Winds (20 foot)	Becoming down drainage 2 to 4 mph after 2300.	Becoming down drainage 2 to 4 mph after 2200.	Downslope/downvalley winds 2-4 mph after 2200.
Notes	Gusty and erratic winds possible near thunderstorms.	Gusty and erratic winds possible near thunderstorms.	Gusty and erratic winds possible near thunderstorms.

WEATHER: Colder and windy, with showers and a chance of thunderstorms.

LAL: 3 **CWR:** 50% **HAINES:** 3

STABILITY / INVERSION: Weak to moderate night time inversion below active fire area. Mixing by 1000.

SMOKE TRANSPORT WINDS: Northwest 10 to 20 mph in afternoon.

Sunset Sunday: 1959

Sunrise Monday: 0533

Sunset Monday: 1957

OUTLOOK FOR MONDAY (Dixie 5,600 FT): Valley fog in the morning, then partly cloudy skies throughout the day. Winds NW 5 to 10 mph with gusts to 15 mph in the afternoon. Max Temps 67 to 70F. Min RH: 35%. Max RH: 80%. LAL 1. CWR 0%. Haines 3.

THREE DAY EXTENDED (Dixie 5,600 FT)

	<u>Max T</u>	<u>Min RH</u>	<u>Max RH</u>	<u>Ridge Winds</u>	<u>WX</u>	<u>LAL</u>
TUE	79	25%	70%	WNW 10 to 15 mph	None	1
WED	85	24%	65%	NW 10 to 15 mph	None	1
THU	88	22%	63%	NW 10 to 15 mph	None	1

FIRE BEHAVIOR FORECAST

FORECAST NUMBER: 31	TYPE OF FIRE: Wildland Fire
FIRE NAME: Dixie/Jumbo	OPERATIONAL PERIOD: Sunday, August 8th, 2021
DATE ISSUED: 8/7/21	TIME ISSUED: 1900
UNIT: USFS-ID-NCF	SIGNED: Andrew Myhra – FBAN(t)

INPUTS

WEATHER SUMMARY: Cold front passage today. Colder and windy with a 50% chance of wetting rain. Today: Highs – low 60s at higher elevations and mid 70s river canyon; Low RH – 35% highlands, 25% river canyon.

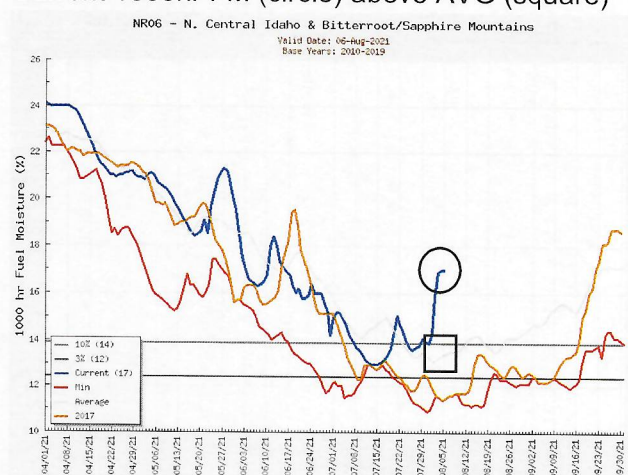
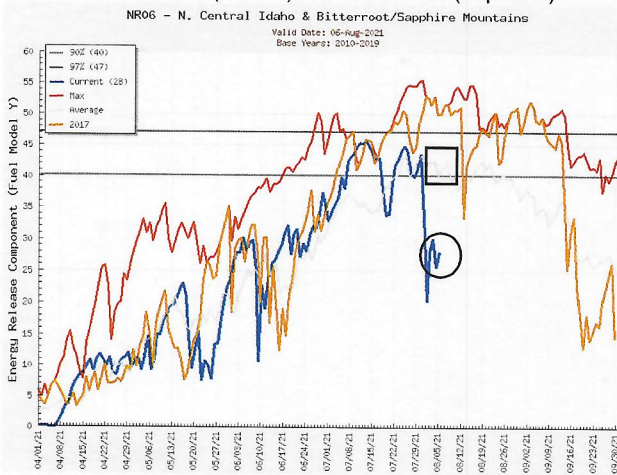
OUTPUTS

FIRE BEHAVIOR

GENERAL:

- Potential fire behavior will continue to be moderated by weather conditions through early next week.
- 1000hr/100hr timelag fuel conditions will require a period of drying before becoming readily available for consumption.
- Winds during today's burn period could produce increased volumes of smoke and some open flame.
- Current ERCs (circle) below AVG (square)

Current 1000hr FM (circle) above AVG (square)



- Winds from the NW have the potential to align with drainages where personnel are working, be aware of gusts that could cause burned trees to come down.

SPECIFIC:

Division C: Isolated heat remains high on the canyon rim on the north end of the Division. Fire weather conditions expected through the weekend will inhibit any increased fire activity.

Division F: Moist fuel conditions in the Comstock drainage continue to limit fire growth. Isolated heat remains on the north aspect of Blowout Ridge, but has not advanced in a number of days.

Division T: Mixed severity fire effects created a patchy burn north of the 1190 Rd. Unburned fuel exists adjacent to interior heats. Predicted NW general winds may align with terrain, heads up for fire-weakened snags.


Division X: Active fire persists south of the burn scar in the Noble Creek drainage and NW of Mallard Creek campground. These areas will continue to be monitored for future fire growth and potential.

Division V: Continuous stands of heavy mixed-conifer between the indirect line and the main fire's edge.

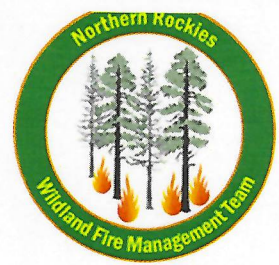
Jumbo Fire: No activity along the fire perimeter.

AIR OPERATIONS: Sunset 2000. Sunrise Friday 0532. Moderate inversion mixing by 1100.

FIRE BEHAVIOR SAFETY: Cold fronts are generally associated with gusty sometimes wet, sometimes very dry winds. These winds can surface unexpectedly and rapidly change the fire environment. Surface dry cold front passages are associated with critical fire weather in the Intermountain West. Wet cold front passage can also create fireline hazards, can you identify a potential hazard in your work environment?

ASSIGNMENT LIST				1.Branch Dixie		2. Division/Group DIV T	
3. Incident Name <div style="text-align: center;">DIXIE / JUMBO</div>				4. Operational Period: DAY Date: August 8, 2021 Time: 0600-2000			
5. Operations Personnel							
Operations Chief		Ashley Sites; Kevin Smith		Division/Group Supervisor		Dave Wilkins; Andrew Pattison (T)	
Branch Director				Air Operations Director Air Attack Supervisor		Jeff Polack	
6. Resources Assigned This Period							
Strike Team/Task Force/ Resource Designator	Last Shift	Leader	No. Pers.	EMT	Trans. Needed	Drop Off PT./Time	Pick Up PT./Time
C-33 HC2 R & R Contracting	8/10	Chris Rocha	20		N	ICP/0600	ICP/2000
C-34 HC2 Wy'East Wildland	8/11	Andrew Williamson	20		N	ICP/0600	ICP/2000
O-255 Salmon River Module*	8/9	Jordan Francom	10		N	ICP/0600	ICP/2000
E-4 ENG6 Metal Works	8/13	Isaach Cordova	3		N	ICP/0600	ICP/2000
E-85 ENG6 Cougar	8/16	Cathy Reilly	3		N	ICP/0600	ICP/2000
E-16 WTS2 Flash EX	8/19	Jesi Eckel	1		N	ICP/0600	ICP/2000
E-101 WTS2 Big Cedar	8/19	Darryl Baker	1		N	ICP/0600	ICP/2000
E-104 HETF Aaron Downing Logging	8/14	Aaron Downing	10		N	ICP/0600	ICP/2000
E-130 HETF Bonnalie Logging	8/14	Nita Lorentz	12		N	ICP/0600	ICP/2000
E-18 Log Loader Cox	8/15	Doug McRoberts	2		N	ICP/0600	ICP/2000
E-97 MAST Downing Logging	8/19	Dale Allen	2		N	ICP/0600	ICP/2000
E-127 DOZ3 McColloch	8/13	Mark McColloch	1		N	ICP/0600	ICP/2000
E-163 MAST Bonnalie Logging	8/17	Eric Mader	2		N	ICP/0600	ICP/2000
O-295 HEQB Max Woehle (T)	8/11		1		N	ICP/0600	ICP/2000
O-293 HEQB Ryan Rectenwald (T)	8/12		1		N	ICP/0600	ICP/2000
O-298 HEQB Karl Honkonen (T)	8/13		1		N	ICP/0600	ICP/2000
O-250 TFLD Angel Prieto	8/9		1		N	ICP/0600	ICP/2000
O-288 FAL Brothers Fire	8/10	Dave Hiatt	1		N	ICP/0600	ICP/2000
O-289 FAL Brothers Fire	8/10	Mike Worley	1		N	ICP/0600	ICP/2000
O-287.8 SOF2 Lee Hahnkamp (T)	8/14		1		N	ICP/0600	ICP/2000
E-128 Ambo 1 Wilderness Ambulance	8/10	Alex Helm; Eric Siedband	2		N	DP7	DP7
EMPF Jeff Childers	8/22		1		N	DP1	DP1
7. Control Operations							
<p>Task: Monitor for spots outside the slop over. Maintain hose lays and sprinklers as necessary to contain slop over. Assist holding and mop-up from DP1 to DP7 as necessary.</p> <p>Purpose: Keep fire from crossing Red River drainage and point protect values at risk.</p> <p>End State: Slop over/spot fires are contained and the main fire is held to the south of Dixie Road. Access along Jack Mountain Road and Forest Road 421 to Whitewater Ranch remains open.</p>							
8. Special Instructions:							
<p>Identify resources available for IA.</p> <p>Backhaul equipment and supplies.</p>							
9. Division/Group Communication Summary							
Function	Frequency - RX	Frequency - TX	Tone		Channel	Comments Repeater assignments are suggestions. If another repeater works better, use it.	
Command 9	169.8125	164.6750	110.9		9		
Tactical	168.2000	168.2000	110.9		2		
Air to Ground CMD	168.4000	168.4000			13		
Air to Ground TAC	169.1500	169.1500			14		
Prepared by (RESL) Patty Bates		Approved by (PSC) 			Date August 7, 2021		Time 2100

INCIDENT RADIO COMMUNICATIONS PLAN I-205				1. INCIDENT NAME		2. DATE/TIME PREPARED		3. OPERATIONAL PERIOD DATE/TIME			
				Dixie/Jumbo Fire		8/7/2021		8/8/2021 0600 to 2000			
4. BASIC RADIO CHANNEL UTILIZATION											
Ch #	Function	Channel Name	Assignment	RX Freq	NW	RX Tone/NAC	TX Freq	NW	TX Tone/NAC	Mode Analog (A) Digital (D) Mixed (M)	Remarks
1	TACTICAL	TAC 1		168.0500	N	110.9	168.0500	N	110.9	A	
2	TACTICAL	TAC 2	DIV T	168.2000	N	110.9	168.2000	N	110.9	A	DIVISION TANGO
3	TACTICAL	TAC 3	DIV F	168.6000	N	110.9	168.6000	N	110.9	A	DIVISION FOXTROT
4	TACTICAL	TAC 4	JUMBO	168.2500	N	110.9	168.2500	N	110.9	A	JUMBO
5	TACTICAL	TAC 5	DIV C	166.7250	N	110.9	166.7250	N	110.9	A	DIVISION CHARLIE
6	TACTICAL	TAC 6	DIV X	166.7750	N	110.9	166.7750	N	110.9	A	DIVISION XRAY
7	COMMAND	CMD 7	DIV FN	170.0125	N	110.9	165.2500	N	110.9	A	OREGON BUTTE LOOKOUT
8	COMMAND	CMD 8		170.9750	N	110.9	168.7000	N	110.9	A	
9	COMMAND	CMD 9	DIV TX	169.8125	N	110.9	164.6750	N	110.9	A	BOSTON MOUNTAIN
10	COMMAND	CMD 10	DIV C	171.8875	N	110.9	162.1875	N	110.9	A	SHEEPEATER LOOKOUT
11	COMMAND	CMD 11	DIV F	171.4125	N	110.9	164.6000	N	110.9	A	MOOSE BUTTE
12	LOCAL FS NET	OREBUTTE	ALL DIV	173.1375	N	0.0	166.2000	N	127.3	A	NEZ EAST REPEATER
13	AIR TO GROUND	A/G CMD	ALL DIV	168.4000	N	0.0	168.4000	N	0.0	A	A/G COMMAND
14	AIR TO GROUND	A/G TAC	ALL DIV	169.1500	N	0.0	169.1500	N	0.0	A	A/G TACTICAL
15	AIR AMBULANCE	EMS 2	EMERGENCY	155.2800	N	0.0	155.2800	N	0.0	A	STATE COMM/AIR AMBULANCE
16	AIR GUARD	AIRGUARD	EMERGENCY	168.6250	N	0.0	168.6250	N	110.9	A	EMERGENCY USE ONLY
5. Special Instructions:											
6. I-205 Prepared By: Communications Unit Leader				Name:				TODD ORR (COML)			
								Signature: <i>Todd W. Orr COML</i>			



Safety Message

Major Hazards and Risks: Preventing Complacency and Vehicle Operations in Inclement Weather

PREVENTING COMPLACENCY:

- ANALYZE small mistakes, not just the serious ones.
- Think you might be too complacent? TRY placing visual reminders in your line of vision such as a photo of a loved one.
- DISCUSS the hazards of your job with your crewmembers.
- SHADOW someone in a different job than you as they identify hazards.
- LOOK for signs of complacency in other people. This will increase your awareness of it.

VEHICLE OPERATIONS IN INCLEMENT WEATHER: Be alert for potential muddy and slick road surfaces. Avoid parking on soft shoulders along roads. Stay off secondary roads in wet conditions. Increase following distances on slick road surfaces. Send a scout to evaluate roads and work area prior to personnel engagement.

Be Mindful About Safety in all Your Actions

Northern Rockies Team 5

DIXIE/JUMBO FIRE

Incident within an Incident Emergency Action Plan

In the case of a serious accident requiring patient transport to a medical facility:

- The closest ranking Operations Leader (i.e., Division Supervisor) at the accident scene will take charge and be the Point of Contact (POC).
- Use the 8-line protocol to assess patient; if patient evaluation is either red or yellow use **Dixie Fire Command Frequency Identified for the Division the IWI is occurring on**. Air extraction resources will use Air to Ground tactical or Air Ambulance EMS2.
- If incident should occur outside the Dixie/Jumbo Fires contact 911 and Dixie Communications on Command frequency for monitoring and support and to notify whether patient is incident personnel or civilian.
- Patients evaluated as Green notify nearest supervisor of the location of the incident and assigned EMT to determine treatment and transport to Medical Unit.
- Upon notification of a serious accident, the Following will report to the ICP Communications trailer: Incident Commander, Safety Officer, Operations Section Chief (Planning OPS), and Medical Unit Leader to monitor IWI. Safety Officer will notify Finance and/or Comp Claims of the IWI.
- Incident radio traffic will be monitored from 0500 to 2200 every day on Command at ICP.

Approved by: /s/ Joe Sampson

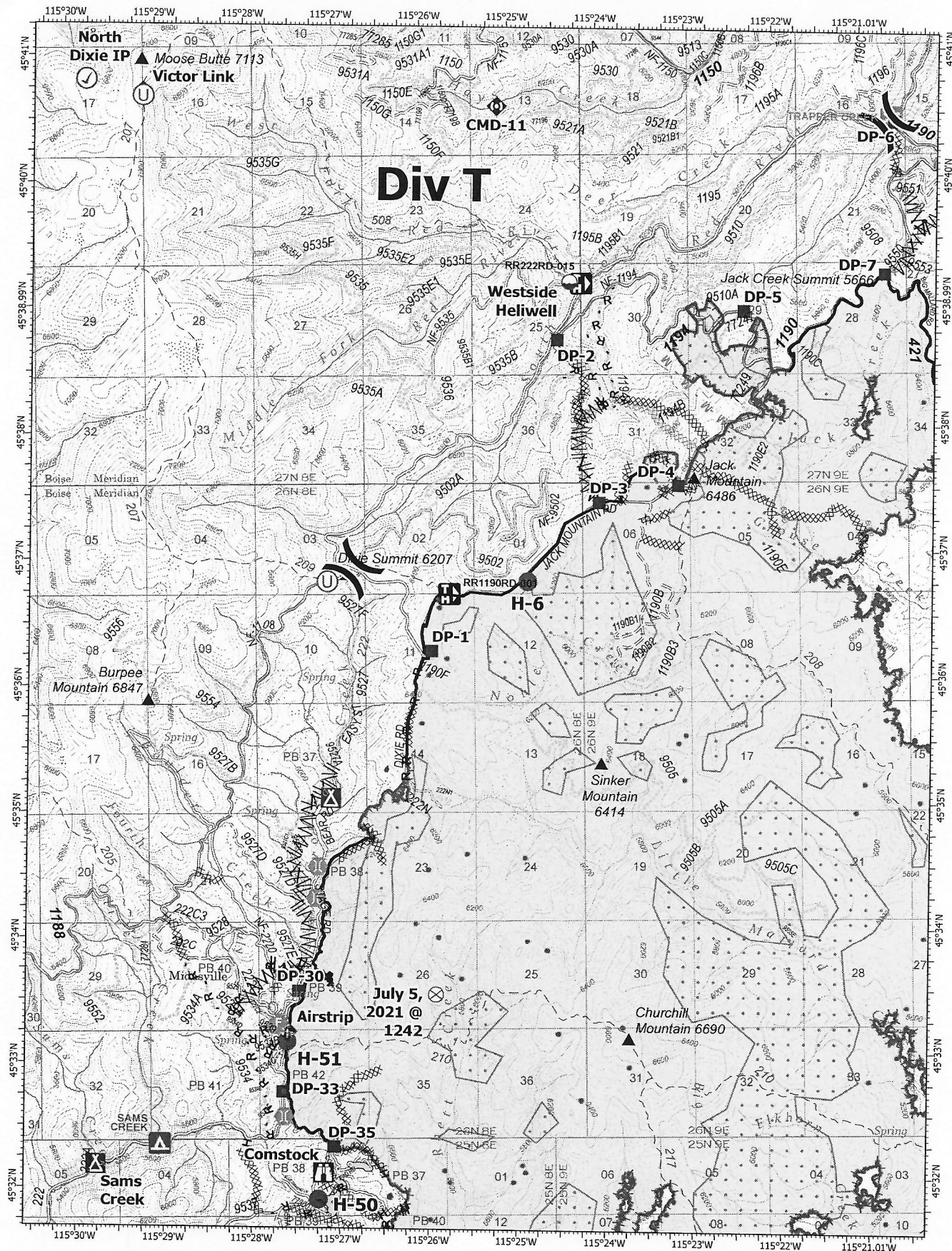
Incident Commander

Date: 08/01/2021

1. Incident/Project Name		2. Operational Period: August 08, 2021 0600-2000				
Dixie/Jumbo Fires		Date/Time 08/07/21 1500				
3. Ambulance Services						
Ambulance	Complete Address	Phone & EMS Frequency	Advanced Life Support (ALS) Yes No			
Elk City Ambulance	Elk City, Idaho	911 155.280			X	
Wilderness Medics	Red River Base Camp	Command	X			
4. Air Ambulance Services						
Name	Phone	Type of Aircraft & Capability				
Life Flight Network	911 155.340 tan	Paramedics/Flight Nurse/Night vision				
2 Bear Air	911 155.340 tan	Hoist/Paramedics				
5. Hospitals						
Name Complete Address	GPS Datum – WGS 84 Coordinate Standard Degrees Decimal Minutes DD° MM.MMM' N - Lat DD° MM.MMM' W - Long	Travel Time Air Gnd	Phone	Helipad Yes No	Level of Care Facility	
Syringa General Hospital 607 W. Main Grangeville, ID 83530	Lat:	30 Min	2 Hrs	208-983-5919 ER	<input type="checkbox"/> <input checked="" type="checkbox"/>	Critical Access Land at Airport
	Long					
	VHF: 155.280 white					
St. Luke's Medical Center McCall, Idaho	Lat: N 44 53.22	45 Min		208-634-2221	<input type="checkbox"/> X	Critical Access Land at Airport
	Long W 116 06.5					
	VHF: 155.280 white					
St. Joseph's Regional Medical Center 415 6 th St. Lewiston, Idaho 83501	Lat: N 46 25.02	45 Min	3 Hrs	208-799-5799 ER	X	Level 3 Roof Top Pad Level 2 Ground Level Pad
	Long W 117 01.45					
	VHF: 155.280 white					
Community Medical Center 2827 Ft. Missoula Rd., Missoula, MT	Lat: N 46 50.909	70 Min		406-327-4171 ER	X	
	Long W 114 02.866					
	VHF: 155.280 white					
6.						
Division Branch Group						
All Divisions:	Crew Supplies:	Crew EMTs:				
DIV C	N/A	Unstaffed with Medical Unit EMTs				
DIV F DP 7	ALS Ambulance	Wilderness Medics (Ambo 1) DP 7				
DIV T DP1	ALS pack, TRS, KED, AED	Jeff Childers - EMPF				
DIV T	ALS Ambulance	Wilderness Medics (Ambo 1) DP 7				
DIXIE	ALS Ambulance	Best Practice Medicine (Ambo 2)				
MALLARD CREEK	ALS pack, TRS, KED, AED	Chris Jacks - EMPF				
Prepared by: Connie Weeks	MEDL	Approved by: Dave Smith				

Division Supply Order Dixie/Jumbo Fire

Order Number:		Date -		Division -	
Order taken in Communications by:				RADO or COML confirmation:	
DIVS Supervisor:				Date & Time Needed:	
Delivery Contact:				Delivery Location:	
Cell Phone #:				UTM	
Radio Channel Number:				Lat: Long:	
Mode of Delivery (Circle Means):		Ground Support		DP/LZ:	
Division will pick up		Deliver to Helibase		Other:	
SPUL Confirmation can be filled as needed (Circle): Yes or No - Requiring at least 24 hours to fill.					
Item	Description:	Quantity	Comments		
	Hose Lay Kit , 1000 Feet = (10) 1 1/2" Hose; and 5 Each of: 1" Hose, 1 1/2" Wyes, 1 1/2" to 1" Reducers, and 1" Forester Nozzles				
1		1000 Feet	4	4000 Feet	
2		2000 Feet	5	5000 Feet	
3		3000 Feet	6	6000 Feet	
	Garden Hose Kit , 500 Feet = (10) 3/4" Hose, and (5 Each): 3/4" Wye, 3/4" Shutoff, 3/4" Nozzle, 1" Wye, and 1" to 3/4" Reducers)				
7		500 Feet	10	3000 Feet	
8		1000 Feet	11	4000 Feet	
9		2000 Feet	12	5000 Feet	
Water Handling Equipment:			Item #	Description	Quantity
13	Hose: 1 1/2" (100')	LG		Line Tools:	
14	1" (100')	LG	40	Pulaski	EA
15	3/4" (50' Toy/Garden)	LG	41	Combi	EA
16	Gated Wye: 1 1/2"	EA	42	McCloud	EA
17	1"	EA	43	Shovel	EA
18	3/4"	EA	44	Water: Cubies	EA
19	Reducer: 1 1/2" X 1"	EA	45	Bottled	CS
20	1" X 3/4"	EA	46	Gatorade	CS
21	Nozzle: 1" Forester	EA	47	MRE's	BX
22	1" Mystery (KK)	EA	48	Flagging: Lime Green	RO
23	1 1/2" Red Barrel	EA	49	Pink	RO
24	3/4" Brass		50	Orange	RO
25	Shutoff Values: 3/4"	EA	51	Killer Tree	RO
26	Pumpkin or Porta-Tank, 1800 gal.	EA	52	Wrap, Structural	RO
27	Blivets, Slingable 55 Gal	EA	53	Other:	
28	Mopup Kits 3 Person	EA	54		
29	Backpack Pumps	EA	55		
30	Sprinkler Kits	EA	56		
31	Foam (5 GALS)	PL	57		
32	Mark III Kits	KT	58		
33	Drip Torch	EA	59		
34	Fusees (72/Case)	CS	60		
35	Chainsaw Kit	KT	61	Bar Oil	Gal
36	Fuel, 5 gallons:	Gas	Can	Diesel, 5 gallon	Can
37	Mark III (20:1)		Can	63	
38	Chainsaw (50:1)	Mixed	Can	64	Not Mixed
				65	2.6 oz/ Gal
					12.8 oz/ 5 Gal
39	Drip Torch (3:2)		Can		BT



IAP Map

Dixie
ID-NCF-000448
08/08/2021

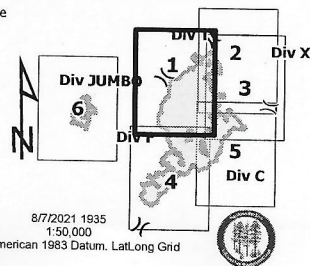
43,204 acres at 08/06/2021 20:15 PDT
Acres from IR and GPS

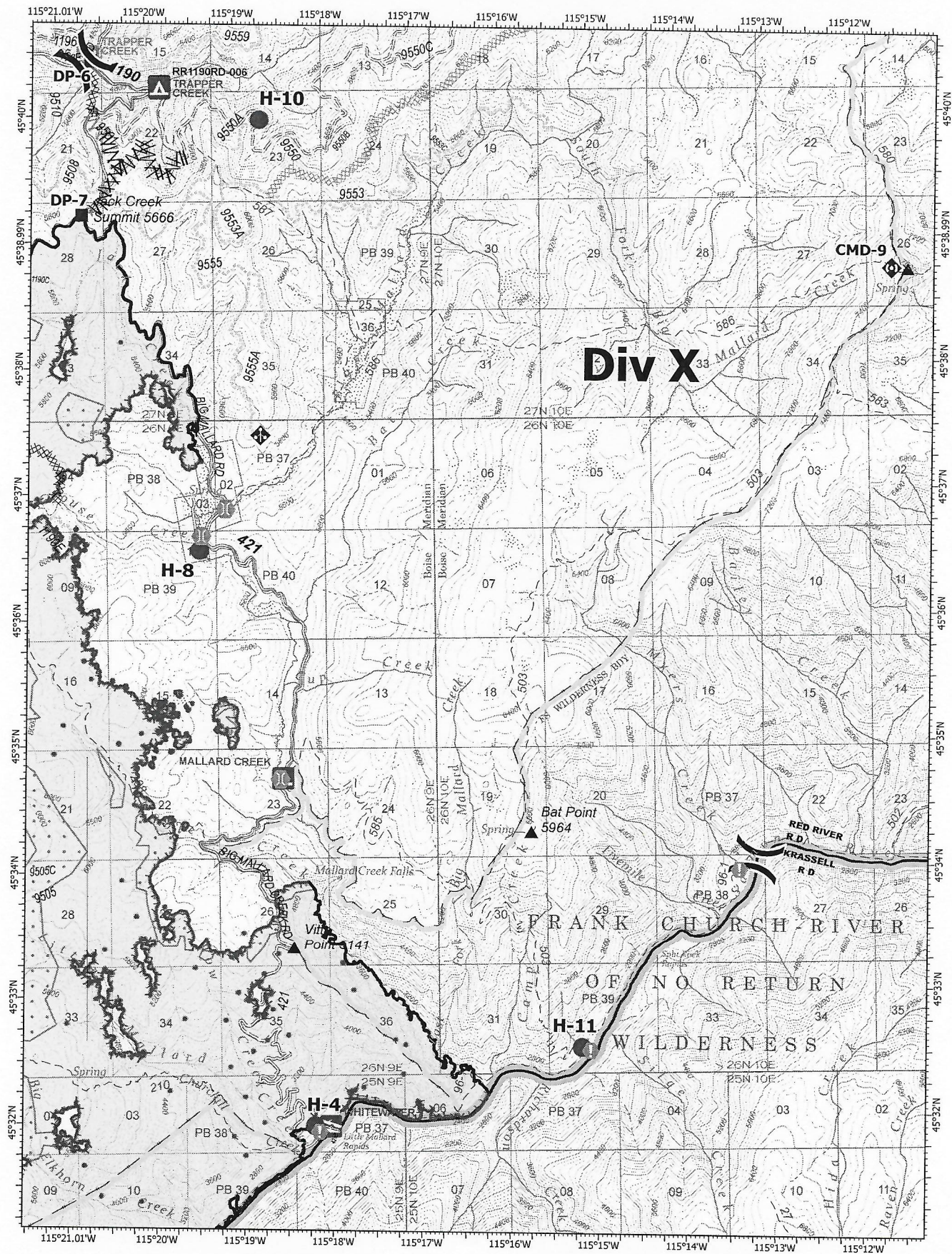
0 0.5 1 Miles

- Check Point
- Dip Site
- Helispot
- Unimproved Landing Area
- ⌋ Division Break
- ⌋ Drop Point
- ⌋ Camp
- ⌋ Lookout
- ⌋ Fire Origin
- ⌋ Fire Station

- ⌋ Bridge
- ⌋ Mobile Weather Unit
- ⌋ Repeater
- ⌋ Wildfire Daily Fire Perimeter
- ⌋ Completed Dozer Line
- ⌋ Completed Fuel Break
- ⌋ Completed Hand Line
- ⌋ Completed Road as Line
- ⌋ Planned Dozer Line
- ⌋ Planned Fuel Break

- ⌋ Planned Mixed Construction Line
- ⌋ Planned Road as Line
- ⌋ Access or Improved Road
- ⌋ Other
- ⌋ Fire Edge
- ⌋ Contained Line
- ⌋ IR Isolated Heat Source
- ⌋ IR Heat Perimeter
- ⌋ IR Scattered Heat





IAP Map

Dixie

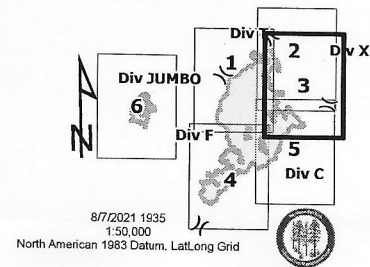
ID-NCF-000448

08/08/2021

43,204 acres at 08/06/2021 20:15 PDT
Acres from IR and GPS

0 0.5 1 Miles

- Helispot
- () Division Break
- Drop Point
- Value at Risk
- Bridge
- ◆ Mobile Weather Unit
- ◆ Repeater
- ▨ Wildfire Daily Fire Perimeter
- ▨ Completed Dozer Line
- ≡ Completed Fuel Break
- ≡ Planned Dozer Line
- ≡ Planned Fuel Break
- R - Planned Road as Line
- Fire Edge
- Contained Line
- IR Isolated Heat Source
- ▨ IR Heat Perimeter
- ▨ IR Scattered Heat





IAP Map

Dixie
ID-NCF-000448
08/08/2021

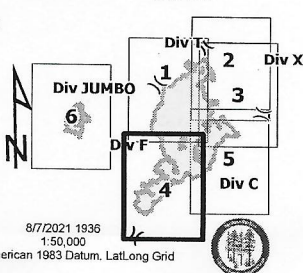
43,204 acres at 08/06/2021 20:15 PDT
Acres from IR and GPS

0 0.5 1 Miles

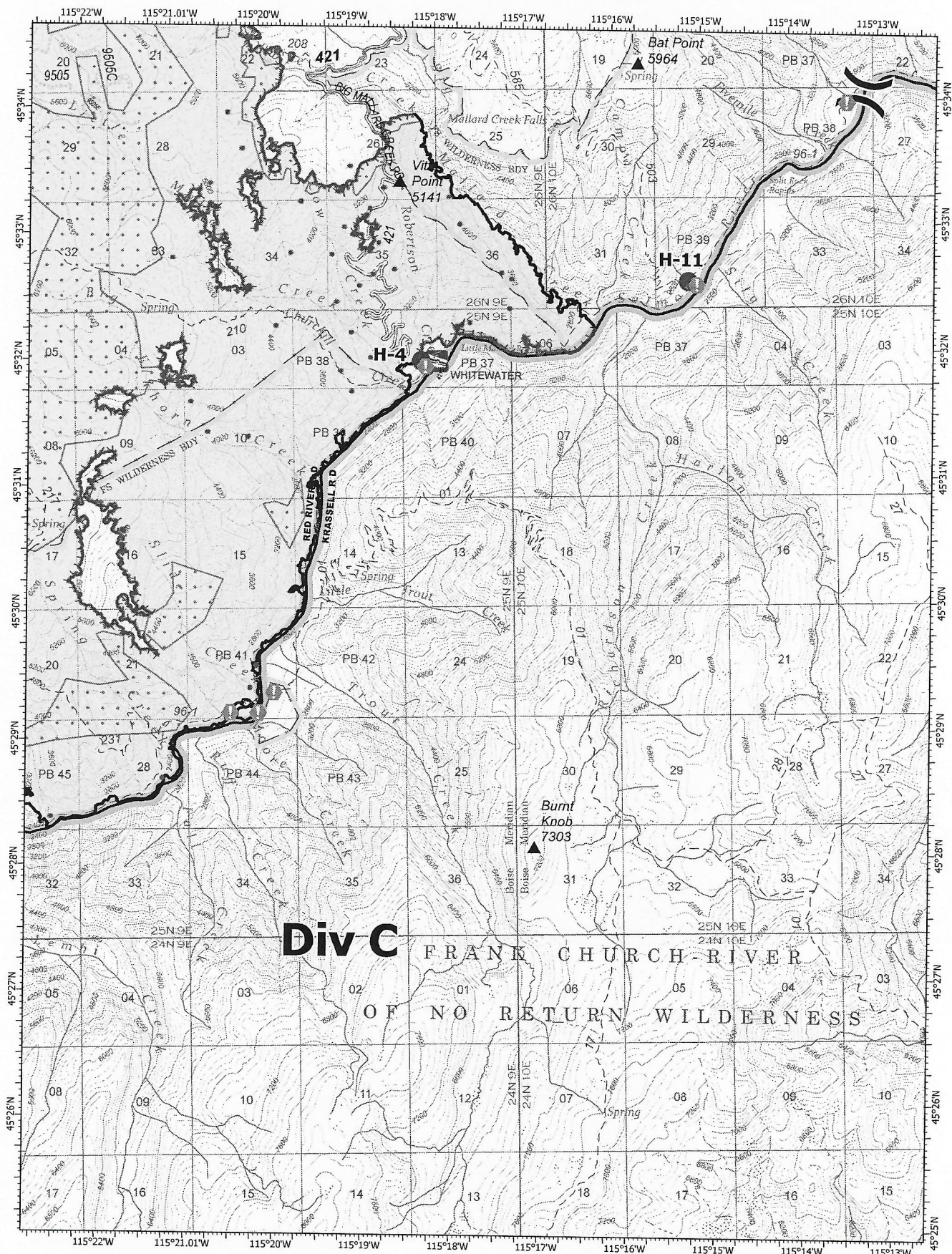
- Airstrip or Airport
- Dip Site
- Helispot
- Division Break
- Drop Point
- Camp
- Lookout

- Value at Risk
- Bridge
- Repeater
- Wildfire Daily Fire Perimeter
- Completed Dozer Line
- Completed Hand Line
- Completed Road as Line

- Access or Improved Road
- Fire Edge
- Contained Line
- IR Isolated Heat Source
- IR Heat Perimeter
- IR Scattered Heat



8/7/2021 1936
1:50,000
North American 1983 Datum, Lat/Long Grid



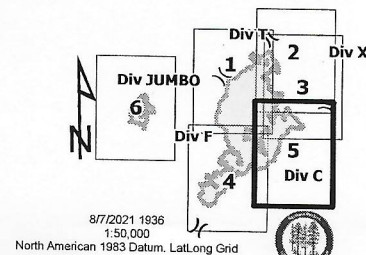
IAP Map

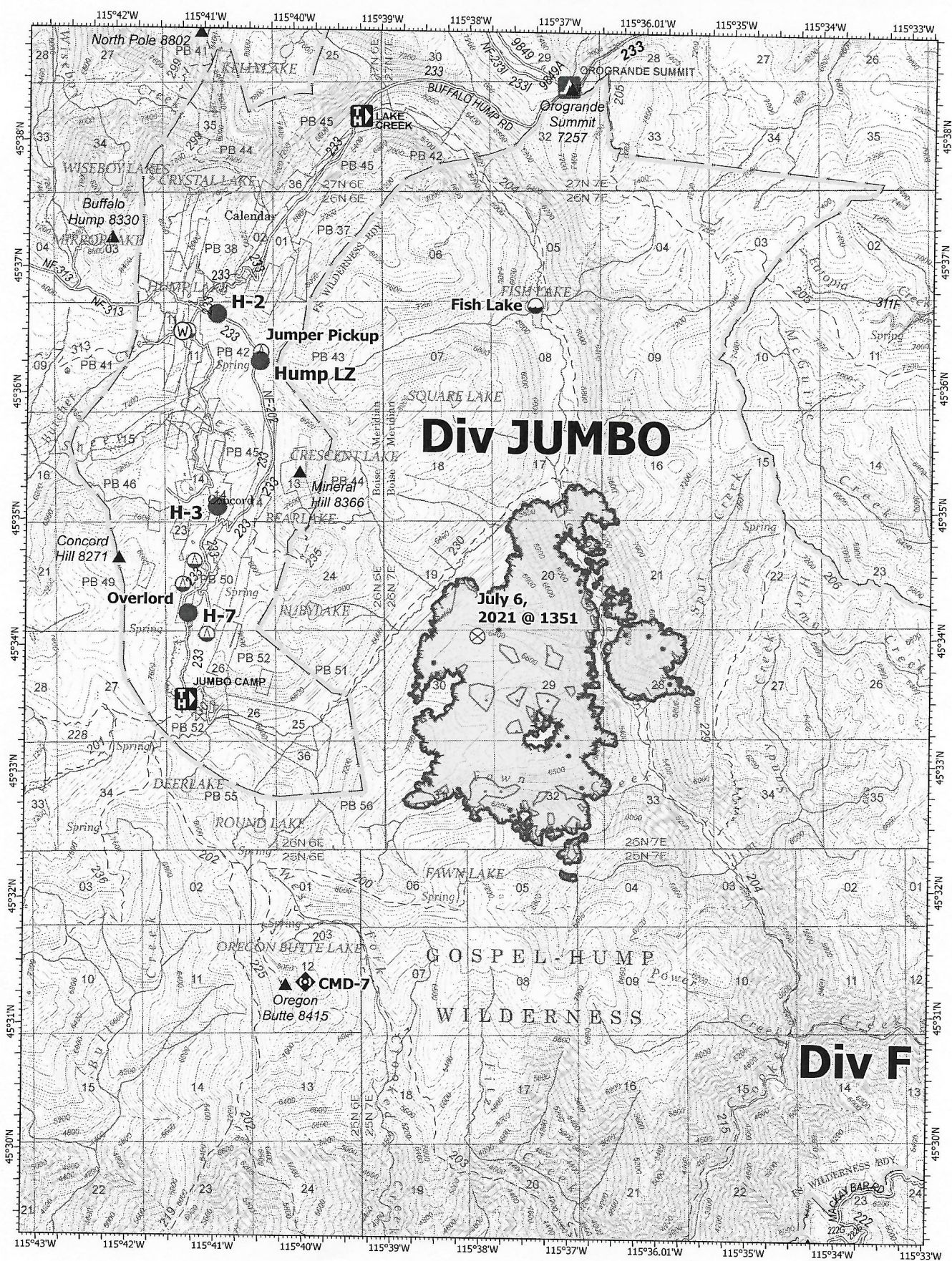
Dixie
ID-NCF-000448
08/08/2021

43,204 acres at 08/06/2021 20:15 PDT
Acres from IR and GPS

0 0.5 1 Miles

- Helispot
- () Division Break
- Ⓢ Value at Risk
- Ⓡ Bridge
- ▨ Wildfire Daily Fire Perimeter
- Fire Edge
- Contained Line
- IR Isolated Heat Source
- ▨ IR Heat Perimeter
- ▨ IR Scattered Heat





Div JUMBO

July 6, 2021 @ 1351

Div F

IAP Map

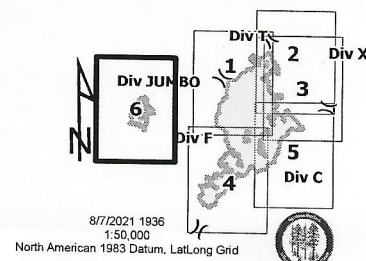
Jumbo
ID-NCF-000463
08/08/2021

2,680 acres at 08/06/2021 20:10 PDT
Acres from IR and GPS

0 0.5 1 Miles

- Dip Site
- Helispot
- Sling Site
- Fire Origin
- Repeater
- Water Source

- Wildfire Daily Fire Perimeter
- Fire Edge
- IR Isolated Heat Source
- IR Heat Perimeter
- IR Scattered Heat



1. Incident Name		2. Operational Period (Date / Time) From: _____ To: _____		UNIT LOG ICS 214-OS	
3. Unit Name / Designators			4. Unit Leader (Name and ICS Position)		
5. Personnel Assigned					
NAME		ICS POSITION		HOME BASE	
6. Activity Log (Continue on Reverse)					
TIME		MAJOR EVENTS			
7. Prepared by: _____ Date / Time _____					
UNIT LOG					
June 2000					
ICS 214-OS					

[illegible]

Medical Incident Report – 8 Line

FOR A NON-EMERGENCY INCIDENT, WORK THROUGH CHAIN OF COMMAND TO REPORT AND TRANSPORT INJURED PERSONNEL AS NECESSARY.

FOR A MEDICAL EMERGENCY: IDENTIFY ON SCENE INCIDENT COMMANDER BY NAME AND POSITION AND ANNOUNCE "MEDICAL EMERGENCY" TO INITIATE RESPONSE FROM IMT COMMUNICATIONS/DISPATCH.

Use the following items to communicate situation to communications/dispatch.

1. CONTACT COMMUNICATIONS / DISPATCH (Verify correct frequency prior to starting report)
Ex: "Communications, Div. Alpha. Stand-by for Emergency Traffic."

2. INCIDENT STATUS: Provide incident summary (including number of patients) and command structure.
Ex: "Communications, I have a Red priority patient, unconscious, struck by a falling tree. Requesting air ambulance to Forest Road 1 at (Lat./Long.) This will be the Trout Meadow Medical, IC is TFLD Jones. EMT Smith is providing medical care."

Severity of Emergency / Transport Priority	<input type="checkbox"/> RED / PRIORITY 1 Life or limb threatening injury or illness. Evacuation need is IMMEDIATE Ex: Unconscious, difficulty breathing, bleeding severely, 2° – 3° burns more than 4 palm sizes, heat stroke, disoriented. <input type="checkbox"/> YELLOW / PRIORITY 2 Serious Injury or illness. Evacuation may be DELAYED if necessary. Ex: Significant trauma, unable to walk, 2° – 3° burns not more than 1-3 palm sizes. <input type="checkbox"/> GREEN / PRIORITY 3 Minor Injury or illness. Non-Emergency transport Ex: Sprains, strains, minor heat-related illness.	
Nature of Injury or Illness & Mechanism of Injury		Brief Summary of Injury or Illness (Ex: Unconscious, Struck by Falling Tree)
Transport Request		Air Ambulance / Short Haul/Hoist Ground Ambulance / Other
Patient Location		Descriptive Location & Lat. / Long. (WGS84)
Incident Name		Geographic Name + "Medical" (Ex: Trout Meadow Medical)
On-Scene Incident Commander		Name of on-scene IC of Incident within an Incident (Ex: TFLD Jones)
Patient Care		Name of Care Provider (Ex: EMT Smith)

3. INITIAL PATIENT ASSESSMENT: Complete this section for each patient as applicable (start with the most severe patient)

Patient Assessment:
See IRPG page 106

Treatment:

4. TRANSPORT PLAN:

Evacuation Location (if different): (Descriptive Location (drop point, intersection, etc.) or Lat. / Long.) Patient's ETA to Evacuation Location:

Helispot / Extraction Site Size and Hazards:

5. ADDITIONAL RESOURCES / EQUIPMENT NEEDS:

Example: Paramedic/EMT, Crews, Immobilization Devices, AED, Oxygen, Trauma Bag, IV/Fluid(s), Splints, Rope rescue, Wheeled litter, HAZMAT, Extrication

6. COMMUNICATIONS: Identify State Air/Ground EMS Frequencies and Hospital Contacts as applicable

Function	Channel Name/Number	Receive (RX)	Tone/NAC *	Transmit (TX)	Tone/NAC *
COMMAND					
AIR-TO-GRND					
TACTICAL					

7. CONTINGENCY: Considerations: If primary options fail, what actions can be implemented in conjunction with primary evacuation method? Be thinking ahead.

8. ADDITIONAL INFORMATION: Updates/Changes, etc.