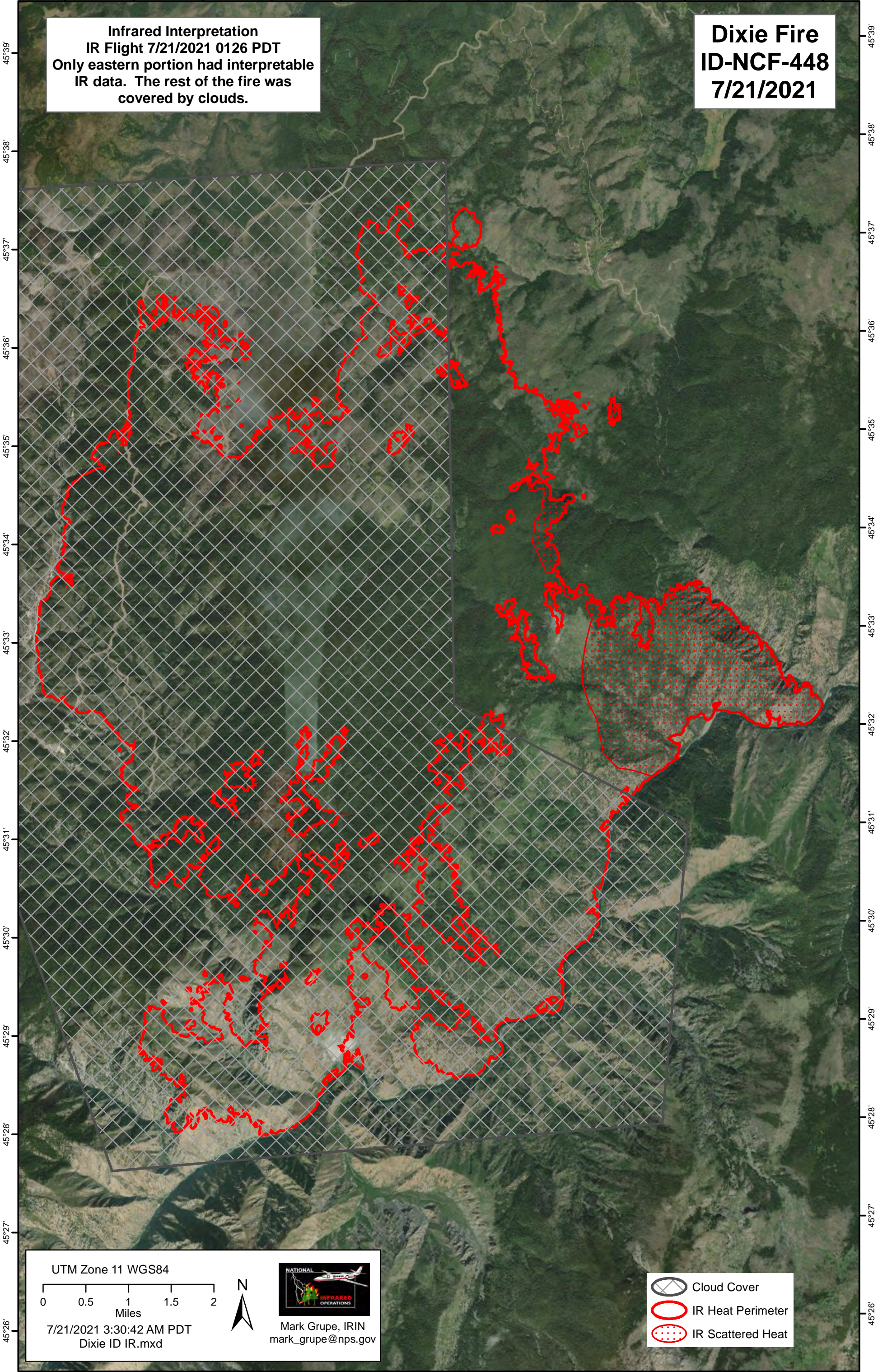


-115°27' -115°26' -115°25' -115°24' -115°23' -115°22' -115°21' -115°20' -115°19' -115°18' -115°17' -115°16'

**Infrared Interpretation**  
**IR Flight 7/21/2021 0126 PDT**  
Only eastern portion had interpretable IR data. The rest of the fire was covered by clouds.


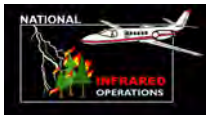
**Dixie Fire**  
**ID-NCF-448**  
**7/21/2021**






UTM Zone 11 WGS84

0 0.5 1 1.5 2  
Miles

7/21/2021 3:30:42 AM PDT  
Dixie ID IR.mxd

Mark Grupe, IRIN  
mark\_grupe@nps.gov

-  Cloud Cover
-  IR Heat Perimeter
-  IR Scattered Heat

-115°28' -115°27' -115°26' -115°25' -115°24' -115°23' -115°22' -115°21' -115°20' -115°19' -115°18' -115°17' -115°16'