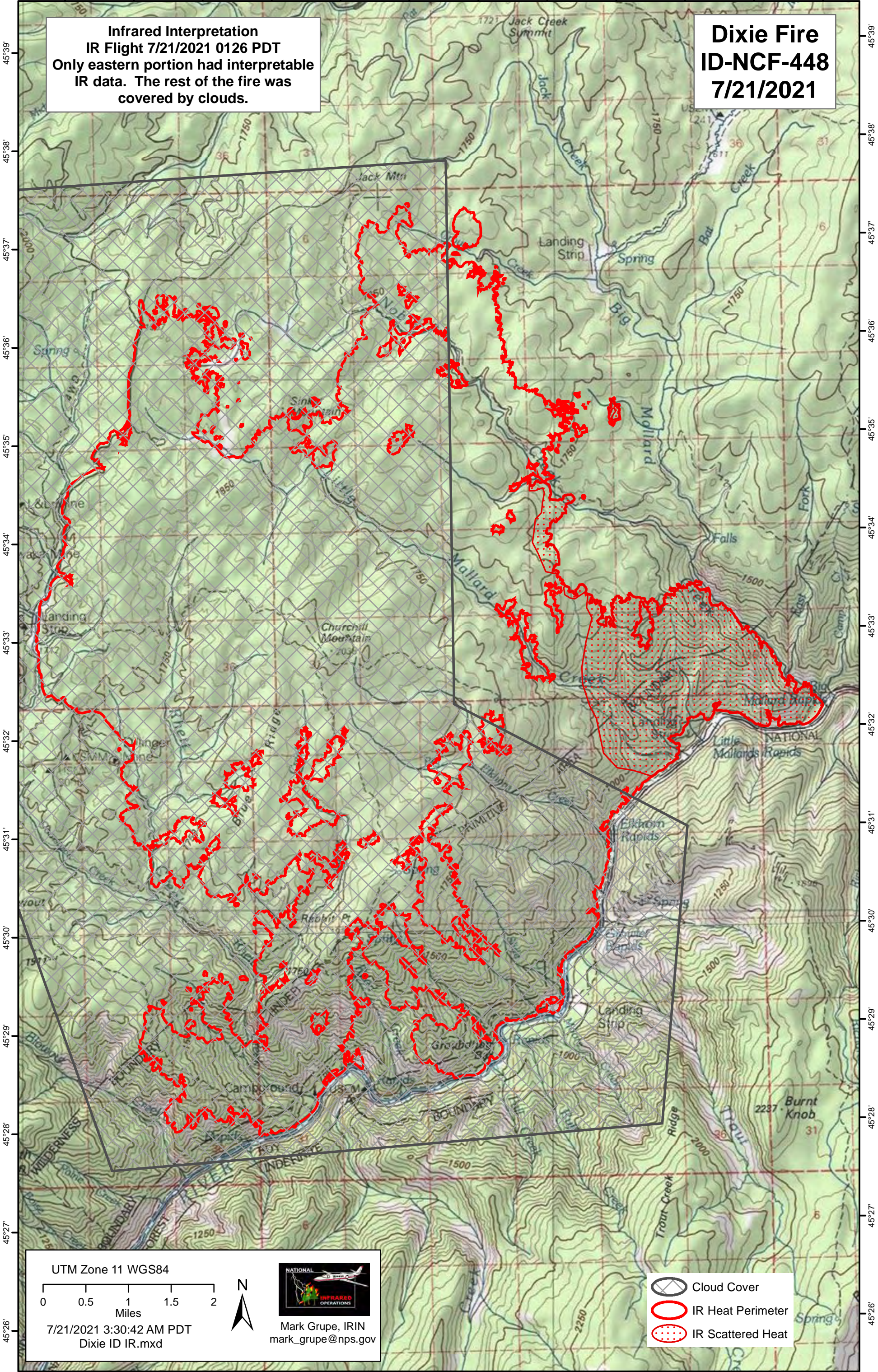


-115°27' -115°26' -115°25' -115°24' -115°23' -115°22' -115°21' -115°20' -115°19' -115°18' -115°17' -115°16'

Infrared Interpretation
IR Flight 7/21/2021 0126 PDT
Only eastern portion had interpretable IR data. The rest of the fire was covered by clouds.

Dixie Fire
ID-NCF-448
7/21/2021



45°39' 45°38' 45°37' 45°36' 45°35' 45°34' 45°33' 45°32' 45°31' 45°30' 45°29' 45°28' 45°27' 45°26'

45°39' 45°38' 45°37' 45°36' 45°35' 45°34' 45°33' 45°32' 45°31' 45°30' 45°29' 45°28' 45°27' 45°26'

UTM Zone 11 WGS84

0 0.5 1 1.5 2 Miles

7/21/2021 3:30:42 AM PDT
Dixie ID IR.mxd

Mark Grupe, IRIN
mark_grupe@nps.gov

- Cloud Cover
- IR Heat Perimeter
- IR Scattered Heat