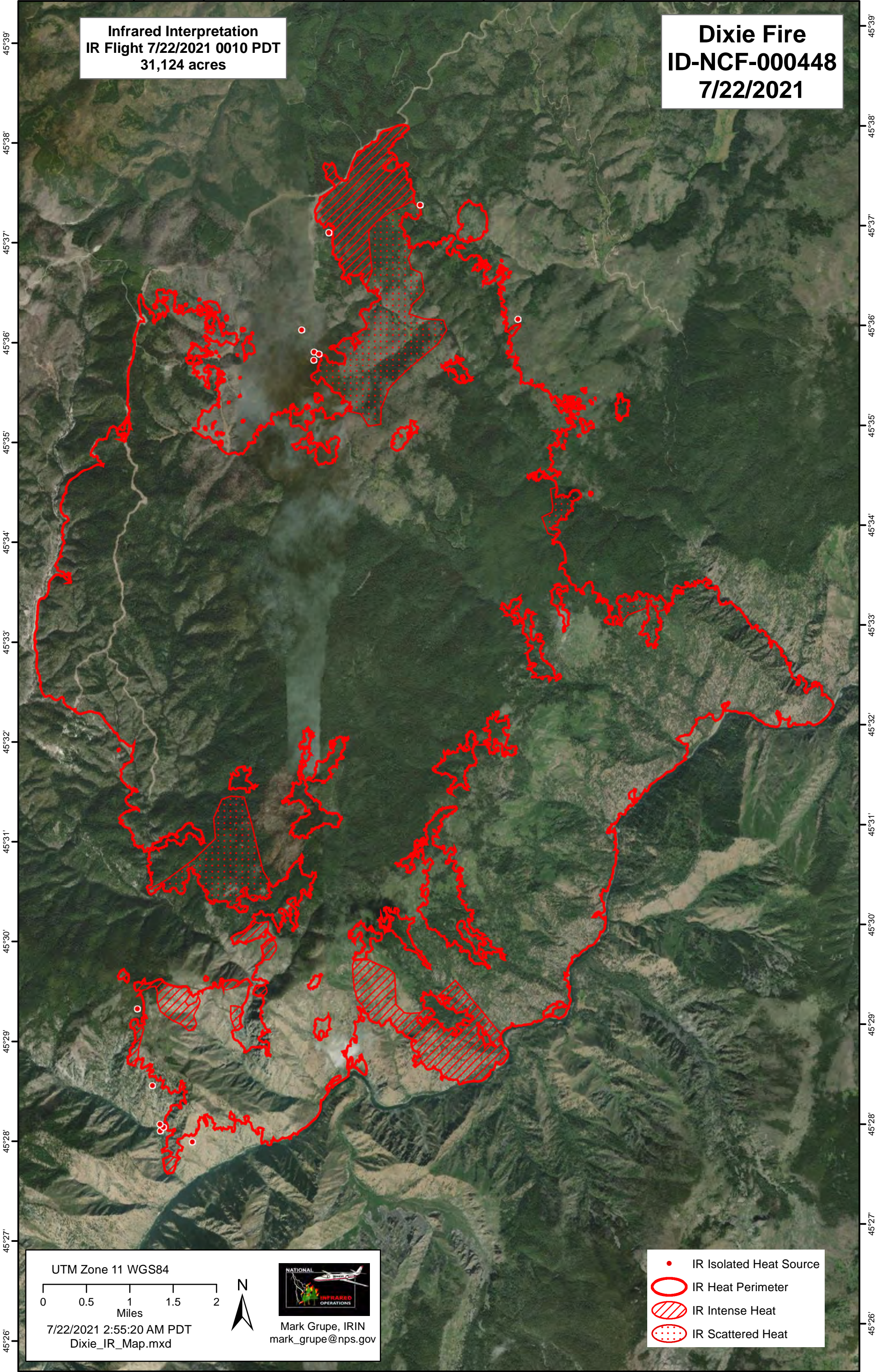


-115°27' -115°26' -115°25' -115°24' -115°23' -115°22' -115°21' -115°20' -115°19' -115°18' -115°17' -115°16'

Infrared Interpretation
IR Flight 7/22/2021 0010 PDT
31,124 acres

Dixie Fire
ID-NCF-000448
7/22/2021



45°39'
45°38'
45°37'
45°36'
45°35'
45°34'
45°33'
45°32'
45°31'
45°30'
45°29'
45°28'
45°27'
45°26'

45°39'
45°38'
45°37'
45°36'
45°35'
45°34'
45°33'
45°32'
45°31'
45°30'
45°29'
45°28'
45°27'
45°26'

UTM Zone 11 WGS84

Miles

7/22/2021 2:55:20 AM PDT
Dixie_IR_Map.mxd

Mark Grupe, IRIN
mark_grupe@nps.gov

- IR Isolated Heat Source
- IR Heat Perimeter
- ▨ IR Intense Heat
- IR Scattered Heat

-115°28' -115°27' -115°26' -115°25' -115°24' -115°23' -115°22' -115°21' -115°20' -115°19' -115°18' -115°17'