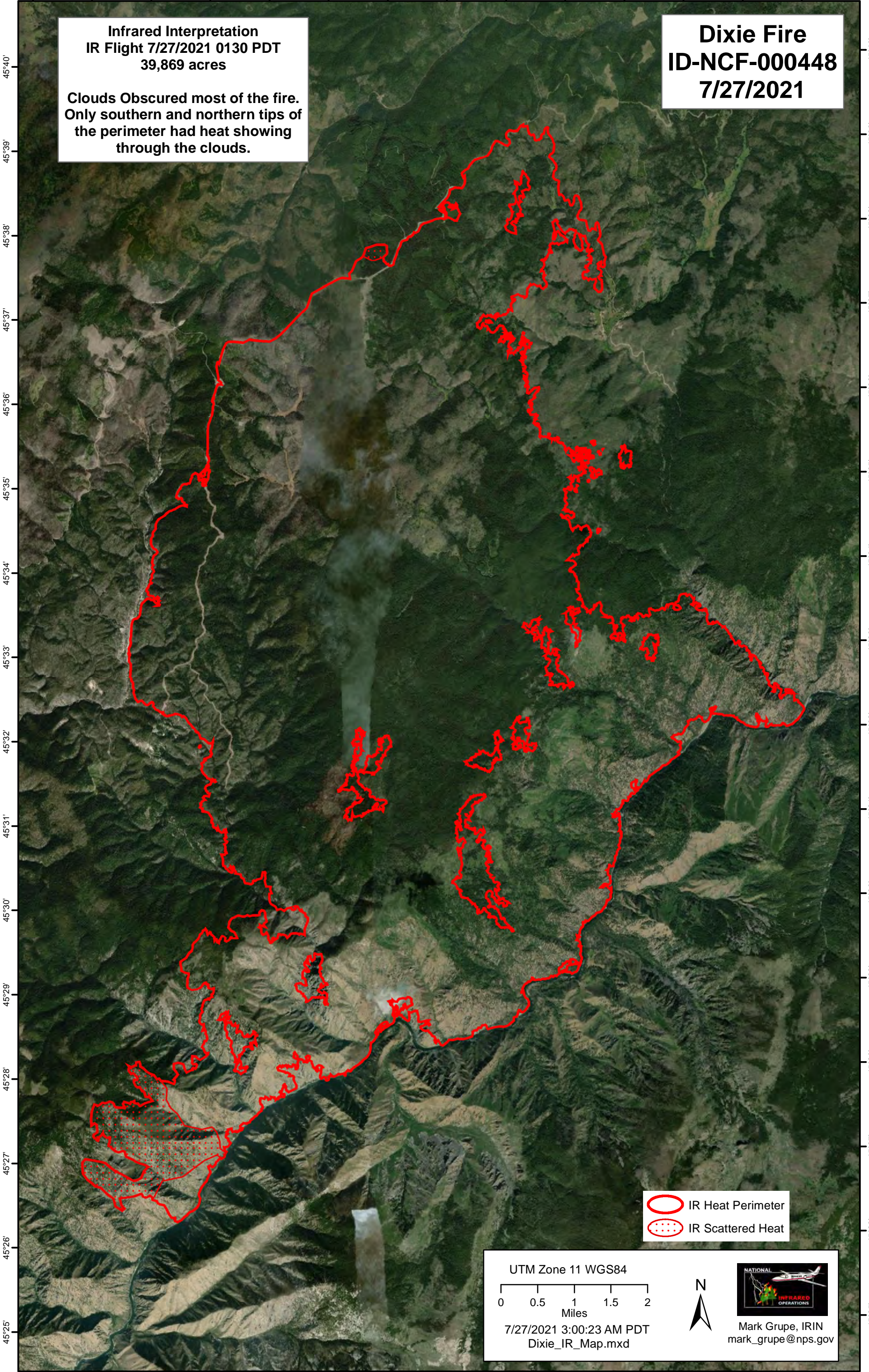


-115°29' -115°28' -115°27' -115°26' -115°25' -115°24' -115°23' -115°22' -115°21' -115°20' -115°19' -115°18' -115°17' -115°16'

Infrared Interpretation
IR Flight 7/27/2021 0130 PDT
39,869 acres



Clouds Obscured most of the fire.
Only southern and northern tips of
the perimeter had heat showing
through the clouds.

Dixie Fire
ID-NCF-000448
7/27/2021



45°40'
45°39'
45°38'
45°37'
45°36'
45°35'
45°34'
45°33'
45°32'
45°31'
45°30'
45°29'
45°28'
45°27'
45°26'
45°25'


45°40'
45°39'
45°38'
45°37'
45°36'
45°35'
45°34'
45°33'
45°32'
45°31'
45°30'
45°29'
45°28'
45°27'
45°26'
45°25'

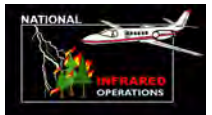
 IR Heat Perimeter
 IR Scattered Heat

UTM Zone 11 WGS84

0 0.5 1 1.5 2
Miles

7/27/2021 3:00:23 AM PDT
Dixie_IR_Map.mxd

 N


Mark Grupe, IRIN
mark_grupe@nps.gov

-115°29' -115°28' -115°27' -115°26' -115°25' -115°24' -115°23' -115°22' -115°21' -115°20' -115°19' -115°18' -115°17' -115°16'