

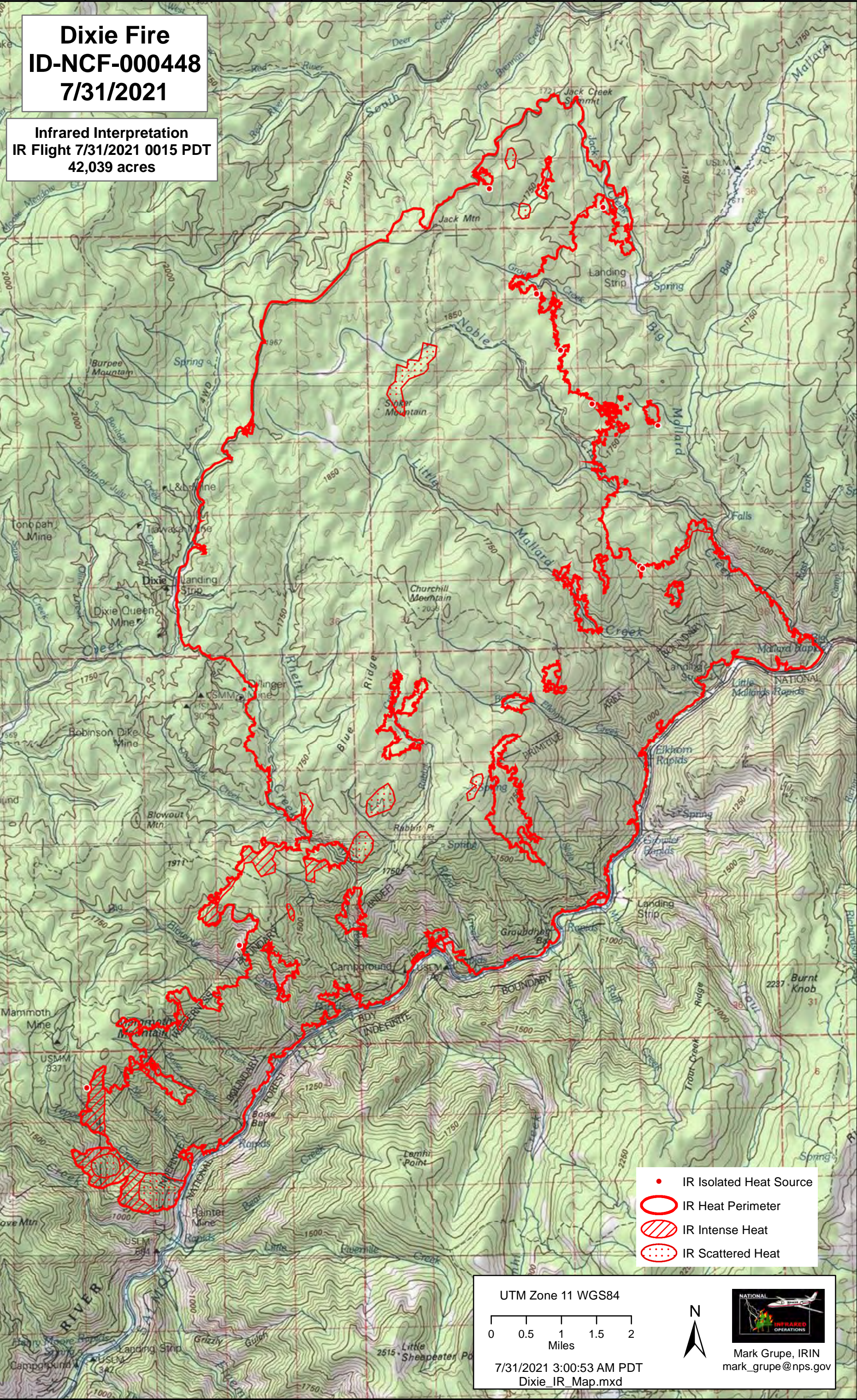
-115°30' -115°29' -115°28' -115°27' -115°26' -115°25' -115°24' -115°23' -115°22' -115°21' -115°20' -115°19' -115°18' -115°17' -115°16'

45°40' 45°39' 45°38' 45°37' 45°36' 45°35' 45°34' 45°33' 45°32' 45°31' 45°30' 45°29' 45°28' 45°27' 45°26' 45°25' 45°24'

45°40' 45°39' 45°38' 45°37' 45°36' 45°35' 45°34' 45°33' 45°32' 45°31' 45°30' 45°29' 45°28' 45°27' 45°26' 45°25' 45°24'

Dixie Fire ID-NCF-000448 7/31/2021

Infrared Interpretation
IR Flight 7/31/2021 0015 PDT
42,039 acres



- IR Isolated Heat Source
- IR Heat Perimeter
- ▨ IR Intense Heat
- IR Scattered Heat

UTM Zone 11 WGS84

Miles

7/31/2021 3:00:53 AM PDT
Dixie_IR_Map.mxd

Mark Grupe, IRIN
mark_grupe@nps.gov

-115°30' -115°29' -115°28' -115°27' -115°26' -115°25' -115°24' -115°23' -115°22' -115°21' -115°20' -115°19' -115°18' -115°17' -115°16'