

115°30'0"W

115°25'0"W

115°20'0"W

115°15'0"W

Dixie
 ID-NCF-000448
 Infrared Map - NIROPS
 Infrared Map for 8/3/2021
 Imagery Acquired: 8/2/2315 @ 2315 MDT
 IRIN: Jen Frazer



Interpreted Acres: 43023 (+984)

****See IRIN Log****

45°40'0"N

45°35'0"N

45°30'0"N

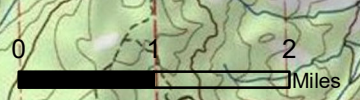
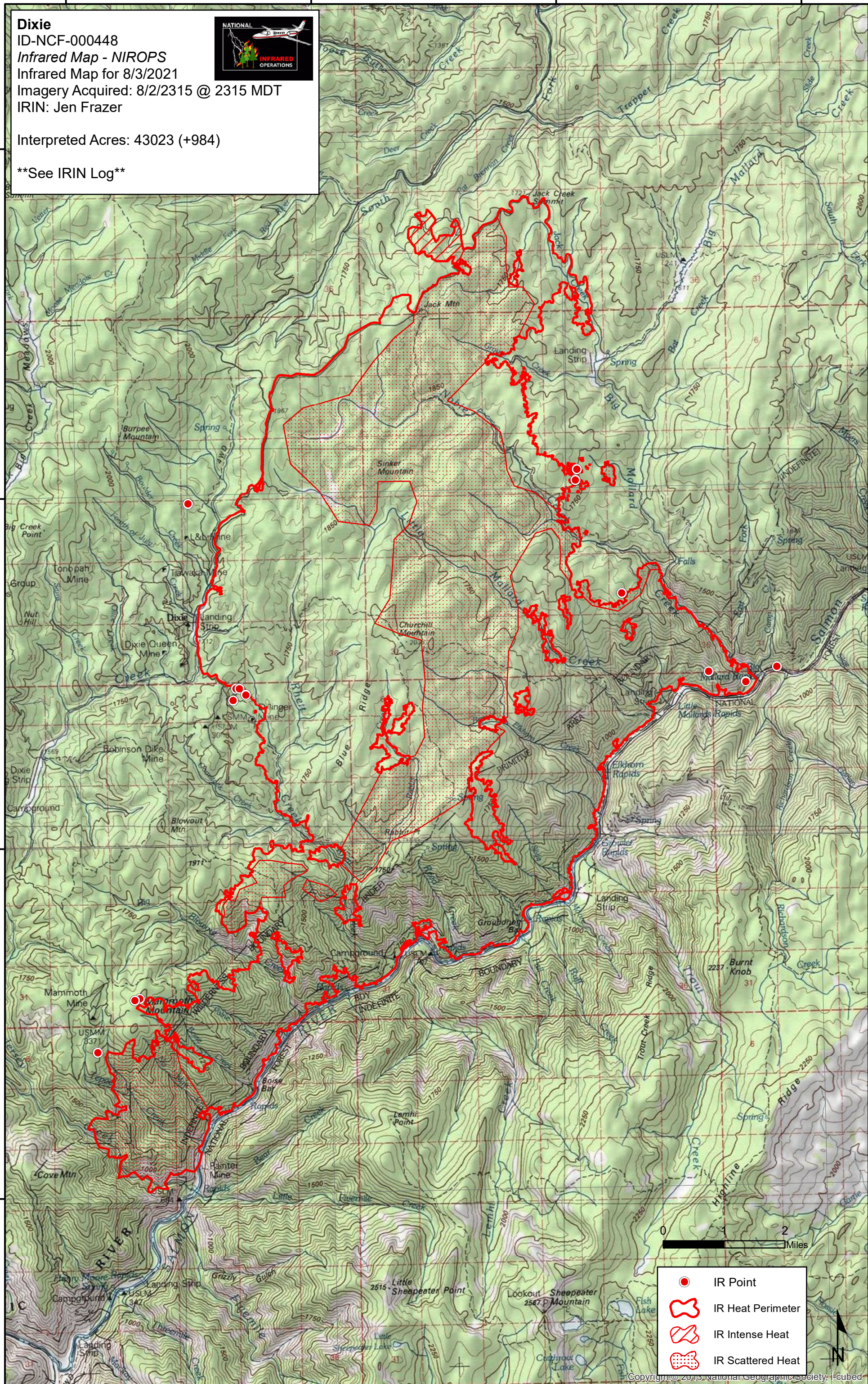
45°25'0"N

45°40'0"N

45°35'0"N

45°30'0"N

45°25'0"N



- IR Point
- ⬮ IR Heat Perimeter
- ⬮ IR Intense Heat
- ⬮ IR Scattered Heat

Copyright © 2019 National Geographic Society, i-cubed

115°30'0"W

115°25'0"W

115°20'0"W

115°15'0"W