

115°39'0"W

115°38'0"W

115°37'0"W

115°36'0"W

Jumbo
ID-NCF-000463

Infrared Map - NIROPS
Interprete Acres: 2702 (+20)
Infrared Map for 8/14/2021
Imagery Acquired: 8/13/2021 @ 1921 PDT
IRIN: Trisha Boll (t)
UTM Zone 11N NAD83



45°35'0"N

45°35'0"N

45°34'0"N

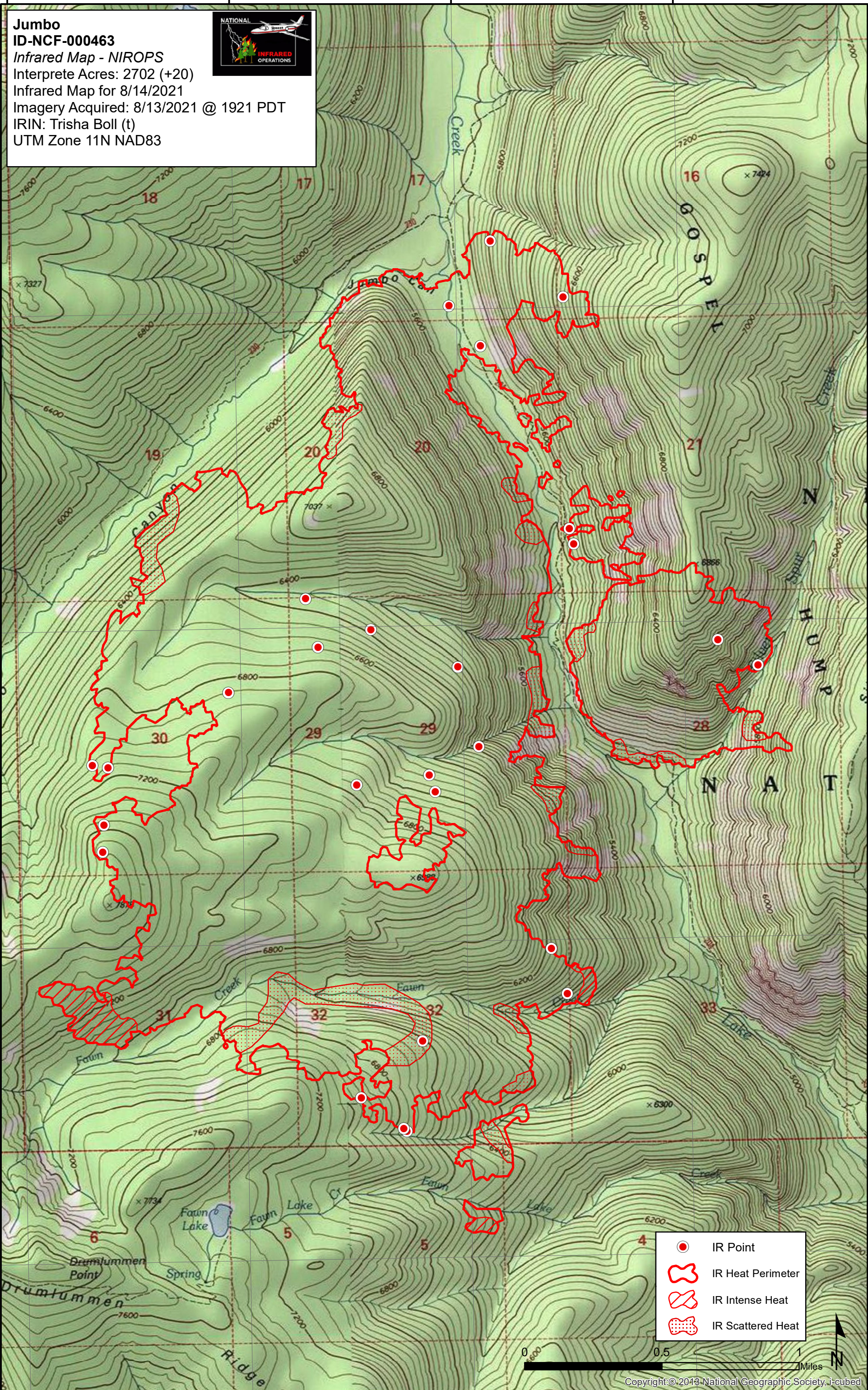
45°34'0"N





45°33'0"N

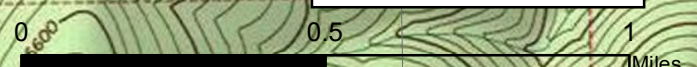
45°33'0"N

45°32'0"N

45°32'0"N



-  IR Point
-  IR Heat Perimeter
-  IR Intense Heat
-  IR Scattered Heat



Copyright © 2013 National Geographic Society, i-cubed

115°39'0"W

115°38'0"W

115°37'0"W

115°36'0"W