

115°39'0"W

115°38'0"W

115°37'0"W

115°36'0"W

115°35'0"W

115°34'0"W

Jumbo
ID-NCF-000463

Infrared Map - NIROPS

Interprete Acres: 2710 (+0)

Infrared Map for 8/16/2021

Imagery Acquired: 8/16/2021 @ 0017 PDT

IRIN: Trisha Boll (t)

UTM Zone 10N NAD83



45°37'0"N

45°36'0"N

45°35'0"N

45°34'0"N

45°33'0"N

45°32'0"N

45°31'0"N

45°37'0"N

45°36'0"N

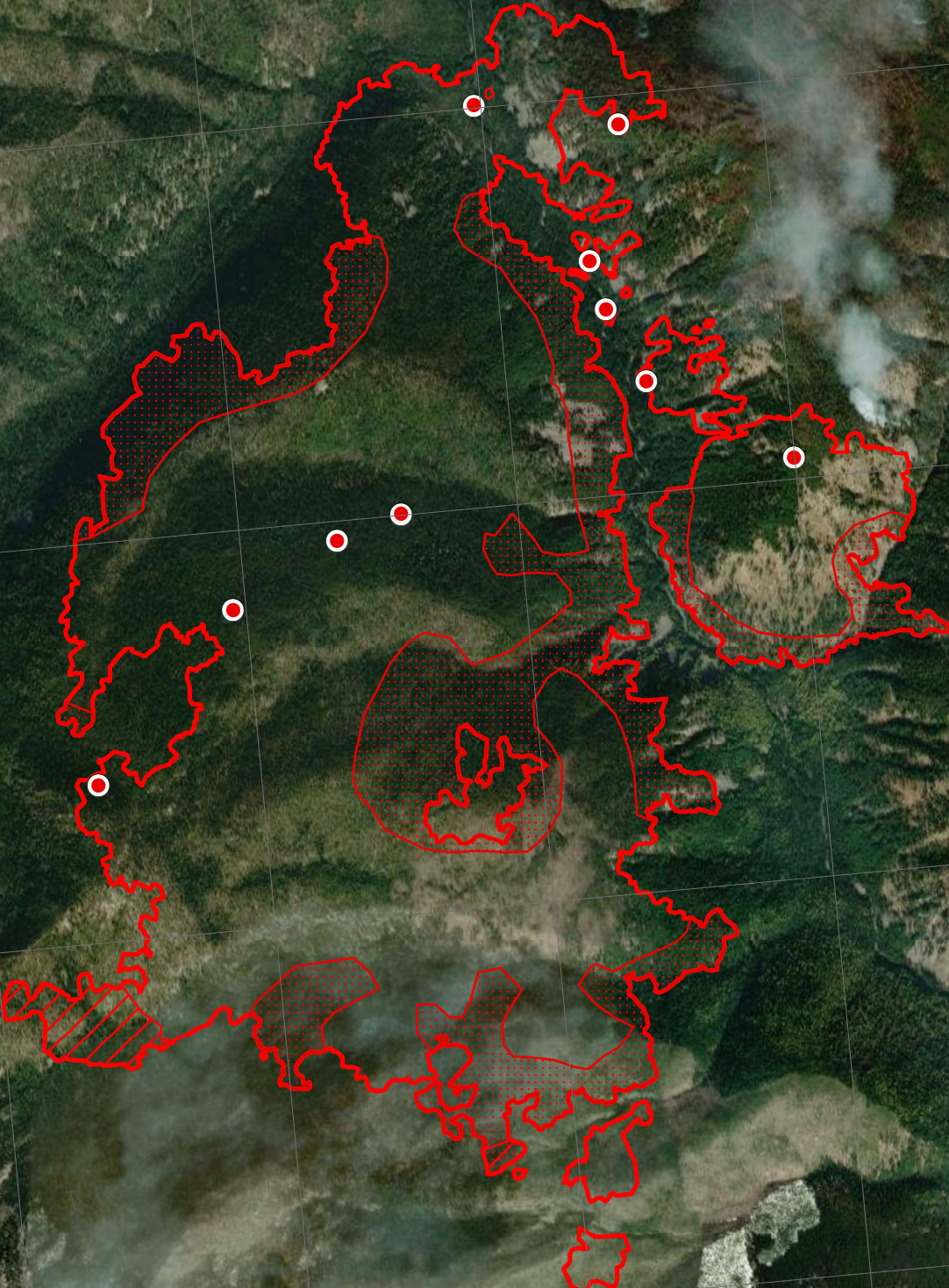
45°35'0"N





45°34'0"N

45°33'0"N

45°32'0"N

45°31'0"N



-  IR Point
-  IR Heat Perimeter
-  IR Intense Heat
-  IR Scattered Heat



Source: Esri, Maxar, GeoEye, Earthstar Geographics, CNES/Airbus DS, USDA, USGS, AeroGRID, IGN, and the GIS User Community

115°40'0"W

115°39'0"W

115°38'0"W

115°37'0"W

115°36'0"W

115°35'0"W