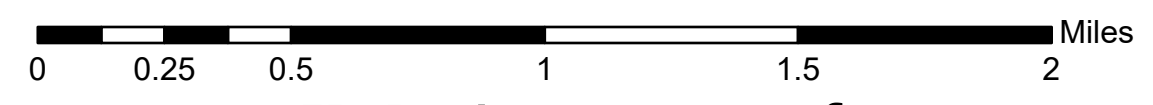
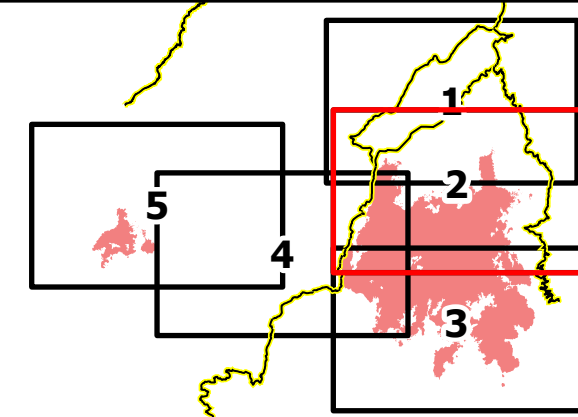


Operations
 Page 2 of 5
 July 14 Day Shift
 Dixie IDNCF-000448
 Jumbo IDNCF-000463



IR Perimeters as of July 12 @ 20:55
 Dixie : 19,109 acres
 Jumbo: 1,039 acres



- | | | | |
|--|--|---|---|
| <ul style="list-style-type: none"> FS Wilderness Boundary USFS Roadless Areas Accountable Property <ul style="list-style-type: none"> Other Property Pump Water Tank Assignment Breaks <ul style="list-style-type: none"> Division Break Branch Break | <ul style="list-style-type: none"> Air Operations <ul style="list-style-type: none"> Helispot Unimproved Landing Area Logistics <ul style="list-style-type: none"> Drop Point Reference <ul style="list-style-type: none"> Other Fire Station Bridge | <ul style="list-style-type: none"> Repair <ul style="list-style-type: none"> Structure Wrap Resource Location Landing or Log Deck Communications <ul style="list-style-type: none"> Mobile Weather Unit Internet Access TravelRoute Structures | <ul style="list-style-type: none"> Idaho County Roads USFS Roads Ops Completed <ul style="list-style-type: none"> Completed Dozer Line Completed Road as Line Ops Planned <ul style="list-style-type: none"> Planned Fuel Break Fire Perimeter <ul style="list-style-type: none"> Fire Edge |
|--|--|---|---|

