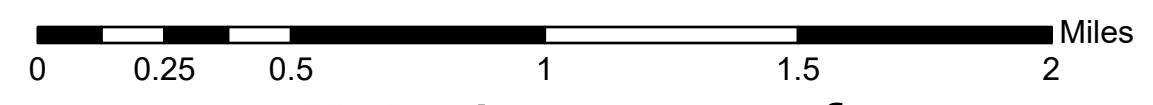
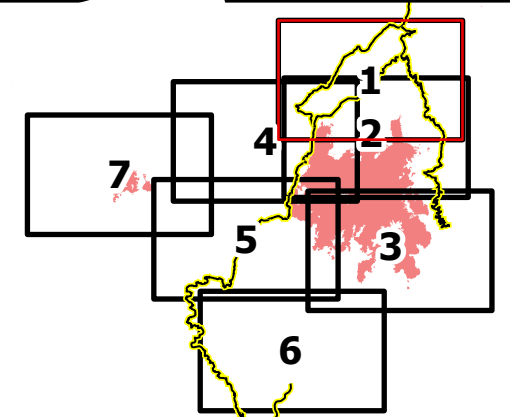


Operations
 Page 1 of 7
 July 15 Day Shift
 Dixie IDNCF-000448
 Jumbo IDNCF-000463



IR Perimeters as of July 13 @ 21:09
 Dixie : 20,947 acres
 Jumbo: 1,138 acres

- | | | | |
|---|---|--|--|
| <ul style="list-style-type: none"> — Idaho County Roads — ForestServiceRoads — USFS Roadless Areas Accountable Property <ul style="list-style-type: none"> ▣ Other Property ▣ Pump ▣ Water Tank | <ul style="list-style-type: none"> Assignment Breaks <ul style="list-style-type: none"> × Division Break Air Operations <ul style="list-style-type: none"> ● Helispot ○ Unimproved Landing Area Logistics <ul style="list-style-type: none"> ■ Drop Point | <ul style="list-style-type: none"> Reference <ul style="list-style-type: none"> ○ Bridge Repair <ul style="list-style-type: none"> ● Resource Location ● Landing or Log Deck Communications <ul style="list-style-type: none"> ◆ Internet Access | <ul style="list-style-type: none"> ■ Structures Ops Completed <ul style="list-style-type: none"> R Completed Road as Line Fire Perimeter <ul style="list-style-type: none"> — Fire Edge — Label Point — Label_Point |
|---|---|--|--|

