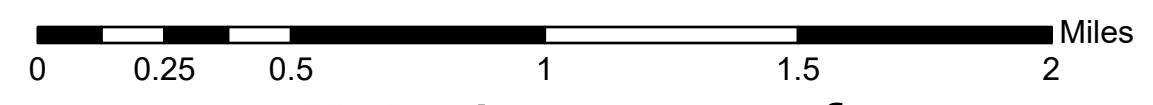
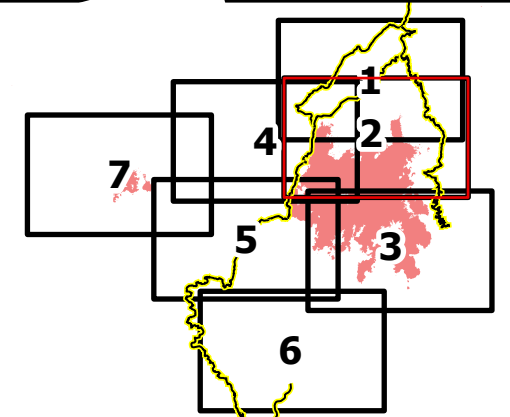


**Operations**  
 Page 2 of 7  
 July 15 Day Shift  
 Dixie IDNCF-000448  
 Jumbo IDNCF-000463



**IR Perimeters as of July 13 @ 21:09**  
 Dixie : 20,947 acres  
 Jumbo: 1,138 acres



<ul style="list-style-type: none"> <li>— Idaho County Roads</li> <li>— Forest Service Roads</li> <li>— FS Wilderness Boundary</li> <li>— USFS Roadless Areas</li> <li>Accountable Property           <ul style="list-style-type: none"> <li>■ Other Property</li> <li>■ Pump</li> <li>■ Water Tank</li> </ul> </li> <li>Assignment Breaks           <ul style="list-style-type: none"> <li>× Division Break</li> </ul> </li> </ul>	<ul style="list-style-type: none"> <li>— Branch Break</li> <li>Air Operations           <ul style="list-style-type: none"> <li>● Helispot</li> <li>○ Unimproved Landing Area</li> </ul> </li> <li>Logistics           <ul style="list-style-type: none"> <li>■ Drop Point</li> <li>■ Camp</li> </ul> </li> <li>Reference           <ul style="list-style-type: none"> <li>● Fire Station</li> </ul> </li> </ul>	<ul style="list-style-type: none"> <li>● Bridge</li> <li>Repair           <ul style="list-style-type: none"> <li>● Structure Wrap</li> <li>● Resource Location</li> <li>● Landing or Log Deck</li> </ul> </li> <li>Communications           <ul style="list-style-type: none"> <li>◆ Internet Access</li> <li>■ Structures</li> </ul> </li> </ul>	<ul style="list-style-type: none"> <li>Ops Completed           <ul style="list-style-type: none"> <li>×× Completed Dozer Line</li> <li>R Completed Road as Line</li> </ul> </li> <li>Ops Planned           <ul style="list-style-type: none"> <li>/ Planned Fuel Break</li> </ul> </li> <li>Fire Perimeter           <ul style="list-style-type: none"> <li>— Fire Edge</li> <li>— Label Point</li> <li>— Label_Point</li> </ul> </li> </ul>
--	---	---	--

