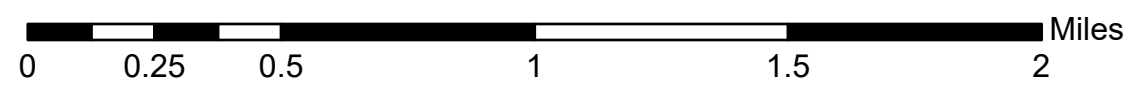
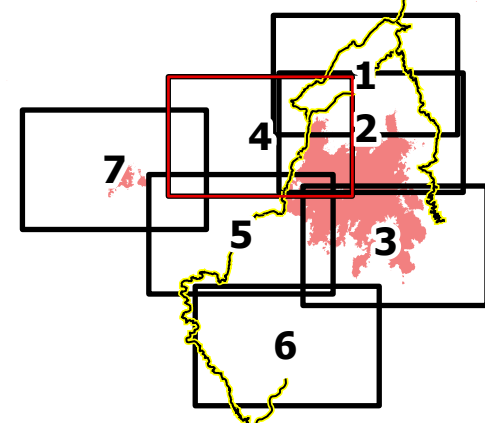


Operations
 Page 4 of 7
 July 15 Day Shift
 Dixie IDNCF-000448
 Jumbo IDNCF-000463



IR Perimeters as of
 July 13 @ 21:09
 Dixie : 20,947 acres
 Jumbo: 1,138 acres



- | | | | |
|--|--|--|--|
| <ul style="list-style-type: none"> — Idaho County Roads — Forest Service Roads — FS Wilderness Boundary — USFS Roadless Areas Accountable Property <ul style="list-style-type: none"> ■ Other Property ■ Water Tank Assignment Breaks <ul style="list-style-type: none"> — Division Break | <ul style="list-style-type: none"> — Branch Break Air Operations <ul style="list-style-type: none"> ● Helispot ○ Unimproved Landing Area Logistics <ul style="list-style-type: none"> ■ Drop Point ■ Camp Reference <ul style="list-style-type: none"> ● Other | <ul style="list-style-type: none"> ● Fire Station ● Bridge Repair <ul style="list-style-type: none"> ● Landing or Log Deck Communications <ul style="list-style-type: none"> ◆ Internet Access ■ Structures Ops Completed <ul style="list-style-type: none"> XX Completed Dozer Line | <ul style="list-style-type: none"> R Completed Road as Line Ops Planned <ul style="list-style-type: none"> — Planned Fuel Break Fire Perimeter <ul style="list-style-type: none"> — Fire Edge — Label Point — Label_Point |
|--|--|--|--|

