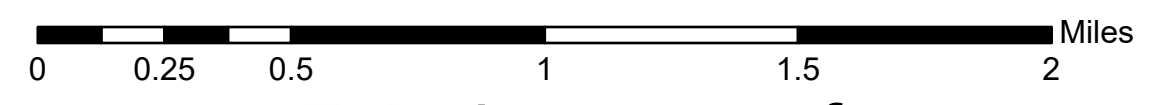
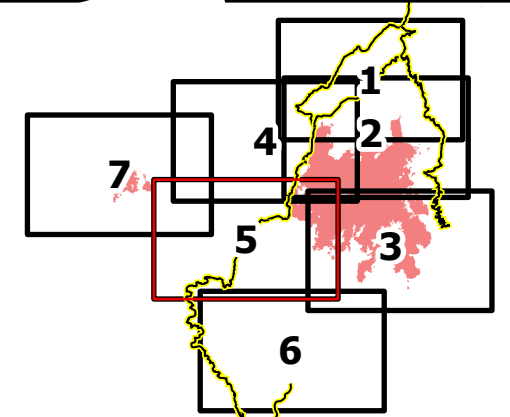


Operations
 Page 5 of 7
 July 15 Day Shift
 Dixie IDNCF-000448
 Jumbo IDNCF-000463



IR Perimeters as of July 13 @ 21:09
 Dixie : 20,947 acres
 Jumbo: 1,138 acres



- | | | | |
|--|---|--|---|
| <ul style="list-style-type: none"> — Idaho County Roads — Forest Service Roads — FS Wilderness Boundary — USFS Roadless Areas Accountable Property <ul style="list-style-type: none"> ■ Water Tank Assignment Breaks <ul style="list-style-type: none"> × Division Break ⋈ Branch Break | Air Operations <ul style="list-style-type: none"> ● Dip Site ● Helispot ● Unimproved Landing Area Logistics <ul style="list-style-type: none"> ■ Drop Point ■ Camp Operations <ul style="list-style-type: none"> ■ Lookout | Reference <ul style="list-style-type: none"> ● Other ● Fire Station Communications <ul style="list-style-type: none"> ◆ Mobile Weather Unit ◆ Internet Access ■ Structures Ops Completed <ul style="list-style-type: none"> XX Completed Dozer Line | H Completed Hand Line
Ops Planned <ul style="list-style-type: none"> XX Planned Dozer Line XX Planned Fuel Break Fire Perimeter <ul style="list-style-type: none"> — Fire Edge — Label Point — Label Point |
|--|---|--|---|

