



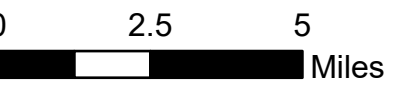
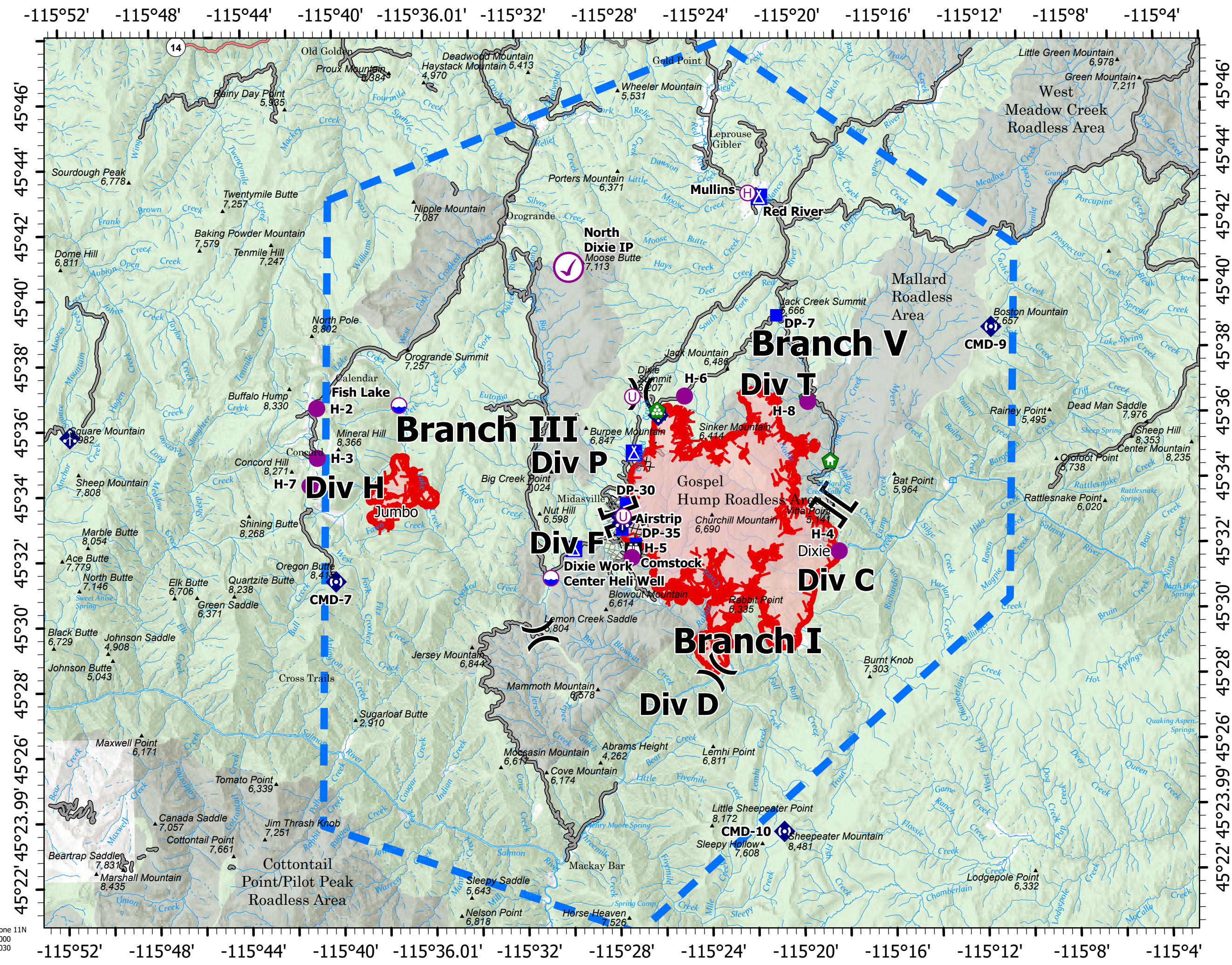


Helicopters

Call sign/FAA#	Type	Make/Model	Base	Remarks	Location	Latitude	Longitude	Elevation Type
303AJ	1	Chinook	GIC	Buckets	Tolo Helibase	45° 55.003	116° 11.446	3343'
462WY	1	Vertol	GIC	Buckets	Fish lake dip site	45° 36.668	115° 37.284	
205PT	2	Bell 205++	Mullins	Buckets, Cargo, PAX	Dixie WC Helibase	45° 31.298	115° 30.790	
359TA	3	AS-350B3	Mullins	Buckets, Cargo, Recon	H-2	45° 36.612	115° 40.883	7862' Type 2 & 3
					H-3	45° 35.09	115° 40.89	7622' Type 2 & 3
					H-4	45° 31.962	115° 18.193	2601' Type 2 & 3
					H-5	45° 31.977	115° 27.235	5840' Type 2 & 3
					H-6	45° 36.803	115° 24.823	6171' Type 2 & 3
					H-7	45° 34.24	115° 41.18	7312' Type 2 & 3
					H-8	45° 36.55	115° 19.43	5238' Type 3

Pilot Map
 Dixie-NCF-000448
 Jumbo-NCF-000463
 7/16/2021

-  Check Point
-  Helispot
-  Dip Site
-  Helibase
-  Sling Site
-  Unimproved Landing Area
-  Division Break
-  Branch Break
-  Drop Point
-  Camp
-  Lookout
-  Structure Wrap
-  Resource Location
-  Landing or Log Deck
-  Mobile Weather Unit
-  Internet Access
-  Repeater
-  Wildfire Daily Fire Perimeter



AD 1983 UTM Zone 11N
 Scale 1:200,000
 7/15/2021 2030