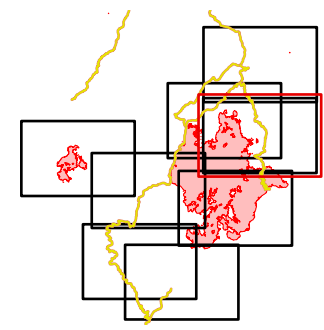


Operations

DivT_East

July 22 Day Shift
 Dixie IDNCF-000448
 Jumbo IDNCF-000463



IR Perimeters as of July 21 @ 01:26
 Dixie : 29,360 acres
 Jumbo: 1,624 acres
 (IR flight impacted by cloud cover)

- | | | | | | | | |
|---|---|---|--|--|--|--|--|
| <ul style="list-style-type: none"> Idaho County Roads Forest Service Roads USFS Roadless Areas FS Wilderness Area | <p>Air Operations</p> <ul style="list-style-type: none"> Dip Site Helispot | <p>Logistics</p> <ul style="list-style-type: none"> Drop Point <p>Repair</p> <ul style="list-style-type: none"> Structure Wrap Resource Location | <p>Communications</p> <ul style="list-style-type: none"> Mobile Weather Unit | <p>Reference</p> <ul style="list-style-type: none"> Value at Risk Bridge <p>Ops Completed</p> <ul style="list-style-type: none"> Completed Dozer Line | <p>Reference</p> <ul style="list-style-type: none"> Other <p>Air Ops</p> <ul style="list-style-type: none"> Retardant Drop | <p>Fire Perimeter</p> <ul style="list-style-type: none"> Fire Edge <p>Accountable Property</p> <ul style="list-style-type: none"> Other Property Pump | <ul style="list-style-type: none"> Water Tank |
|---|---|---|--|--|--|--|--|

NAD 83 UTM Zone 11 N
 1:26000
 7/22/21

