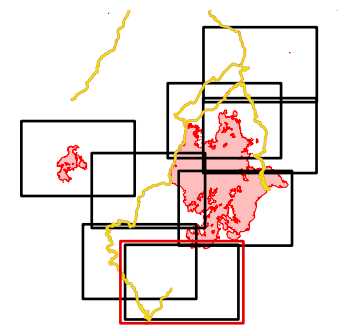


# Operations

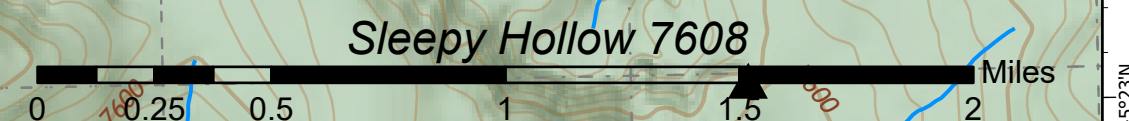
## Div\_D

July 22 Day Shift  
 Dixie IDNCF-000448  
 Jumbo IDNCF-000463



IR Perimeters as of July 22 @ 00:10  
 Dixie: 31,124 acres  
 Jumbo: 1,793 acres

- |                      |                          |                       |                       |                             |                |
|----------------------|--------------------------|-----------------------|-----------------------|-----------------------------|----------------|
| Idaho County Roads   | FS Wilderness Area       | <b>Logistics</b>      | <b>Reference</b>      | <b>Accountable Property</b> | Intense Heat   |
| Forest Service Roads | <b>Assignment Breaks</b> | Drop Point            | Value at Risk         | Pump                        | Heat Perimeter |
| USFS Roadless Areas  | Division Break           | <b>Communications</b> | <b>Fire Perimeter</b> | Isolated Heat Source        | Scattered Heat |
|                      |                          | Repeater              | Fire Edge             |                             |                |



NAD 83 UTM Zone 11 N  
 1:26000  
 7/22/21

