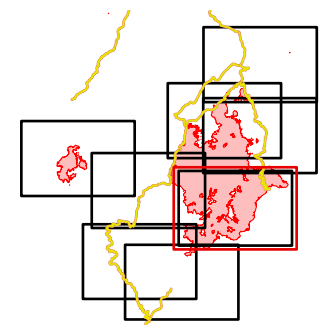


Div C

Operations
Div_C
 July 24 Day Shift
 Dixie IDNCF-000448
 Jumbo IDNCF-000463



IR Perimeters as of
 July 23 @ 22:55
 Dixie: 37,161 ac.
 Jumbo: 1,967 ac.

- | | | | | | |
|---|---|---|--|--|--|
| <ul style="list-style-type: none"> — Idaho County Roads — Forest Service Roads ■ USFS Roadless Areas ■ FS Wilderness Area | <ul style="list-style-type: none"> — Assignment Break — Division Break | <ul style="list-style-type: none"> ■ Logistics ■ Drop Point | <ul style="list-style-type: none"> ⊗ Fire Origin | <ul style="list-style-type: none"> ⊗ Ops Completed ⊗ Completed Dozer Line H Completed Hand Line R Completed Road as Line | <ul style="list-style-type: none"> — Fire Perimeter — Fire Edge — Contained Line ● Isolated Heat ■ Intense Heat ■ Heat Perimeter |
| <ul style="list-style-type: none"> ⊗ Air Operations ⊗ Airstrip or Airport ● Helispot | <ul style="list-style-type: none"> ⊗ Air Operations ⊗ Airstrip or Airport ● Helispot | <ul style="list-style-type: none"> ⊗ Operations ⊗ Lookout | <ul style="list-style-type: none"> ⊗ Reference ⊗ Value at Risk | <ul style="list-style-type: none"> — Reference — Access or Improved Road | |



NAD 83 UTM Zone 11 N
 1:26000
 7/23/21

