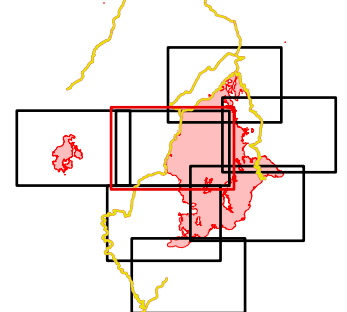


Operations

Div F/P_South

July 24 Day Shift
 Dixie IDNCF-000448
 Jumbo IDNCF-000463



IR Perimeters as of July 23 @ 22:55
 Dixie: 37,161 ac.
 Jumbo: 1,967 ac.

- | | | | | | | | |
|---|--|---|---|---|--|--|---|
| <ul style="list-style-type: none"> Idaho County Roads Forest Service Roads USFS Roadless Areas FS Wilderness Area | Accountable Property <ul style="list-style-type: none"> Other Property Pump Water Tank | Assignment Breaks <ul style="list-style-type: none"> Division Break Air Operations <ul style="list-style-type: none"> Helispot Unimproved Landing Area | Logistics <ul style="list-style-type: none"> Drop Point Camp Operations <ul style="list-style-type: none"> Lookout | Fire <ul style="list-style-type: none"> Fire Origin Repair <ul style="list-style-type: none"> Landing or Log Deck | Communications <ul style="list-style-type: none"> Mobile Weather Unit Internet Access Reference <ul style="list-style-type: none"> Fire Station | <ul style="list-style-type: none"> Bridge Other Ops Completed <ul style="list-style-type: none"> Completed Dozer Line Completed Fuel Break Completed Hand Line | <ul style="list-style-type: none"> Completed Road as Line Access or Improved Road Fire Perimeter <ul style="list-style-type: none"> Fire Edge Contained Line |
|---|--|---|---|---|--|--|---|

