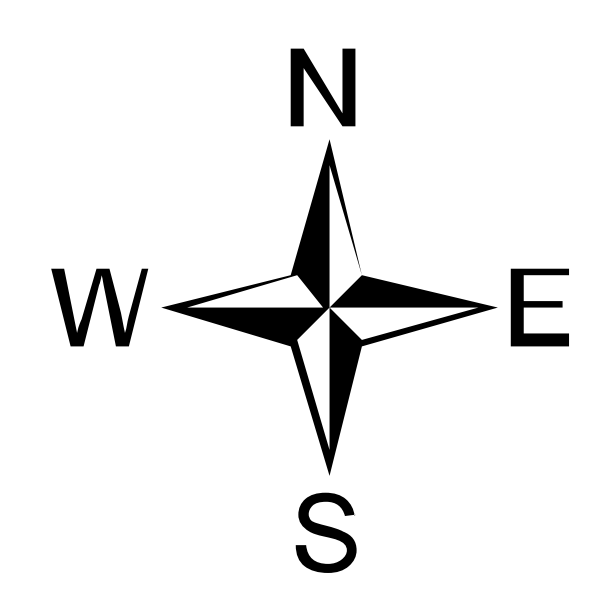
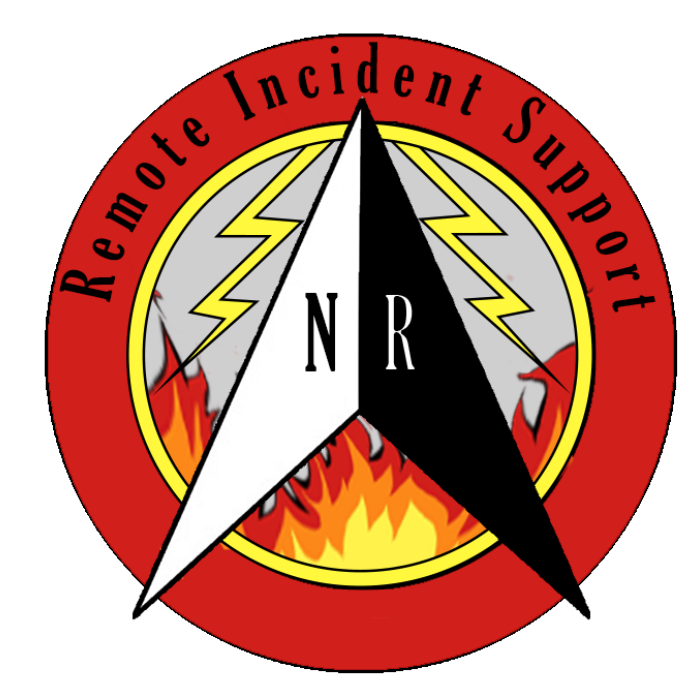


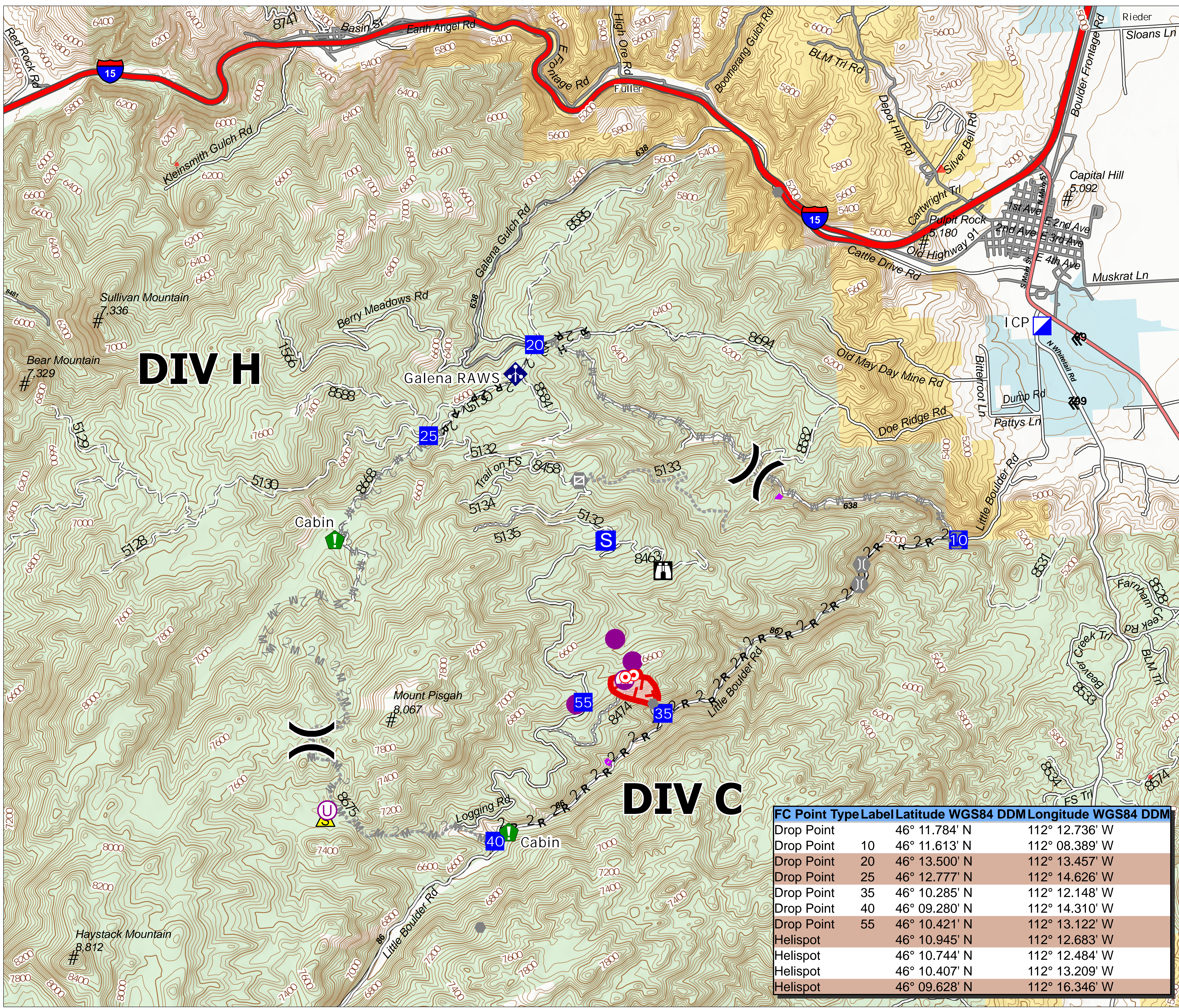
Operations

Gatlin Gulch
MTBDF-006338
60 Acres
08/04/2021

Fire Perimeter: 03 August 2021 2114



0 0.5 1 Miles



DIV H

DIV C

FC Point	Type	Label	Latitude WGS84 DDM	Longitude WGS84 DDM
Drop Point			46° 11.784' N	112° 12.736' W
Drop Point	10		46° 11.613' N	112° 08.389' W
Drop Point	20		46° 13.500' N	112° 13.457' W
Drop Point	25		46° 12.777' N	112° 14.626' W
Drop Point	35		46° 10.285' N	112° 12.148' W
Drop Point	40		46° 09.280' N	112° 14.310' W
Drop Point	55		46° 10.421' N	112° 13.122' W
Helispot			46° 10.945' N	112° 12.683' W
Helispot			46° 10.744' N	112° 12.484' W
Helispot			46° 10.407' N	112° 13.209' W
Helispot			46° 09.628' N	112° 16.346' W

- Helispot
- ⊕ Sling Site
- ⊙ Unimproved Landing Area
- ⌘ Division Break
- ⬠ Incident Command Post
- Drop Point
- Staging Area
- ⌘ Lookout
- ⊙ Hot Spot - Spot Fire
- Other
- ⊕ Gate
- ⊕ Bridge
- 📍 Resource Location
- ⬠ Mobile Weather Unit
- ⚠ Safety Zone
- Paved
- Gravel Road
- Dirt Road
- Unimproved Road
- Forest Service Roads Closed