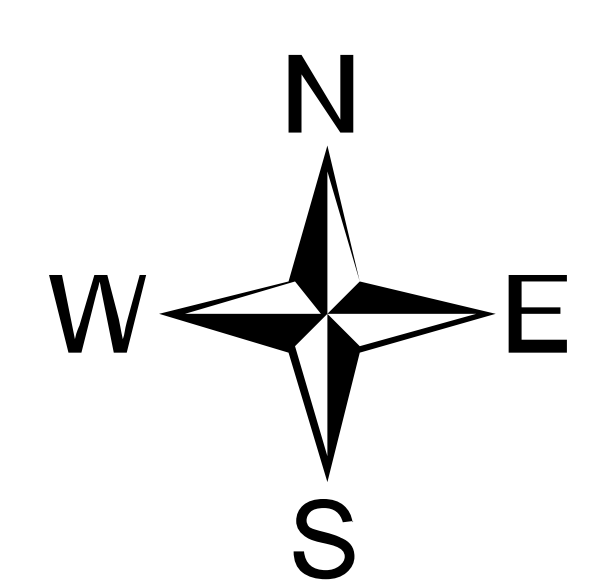


# Operations

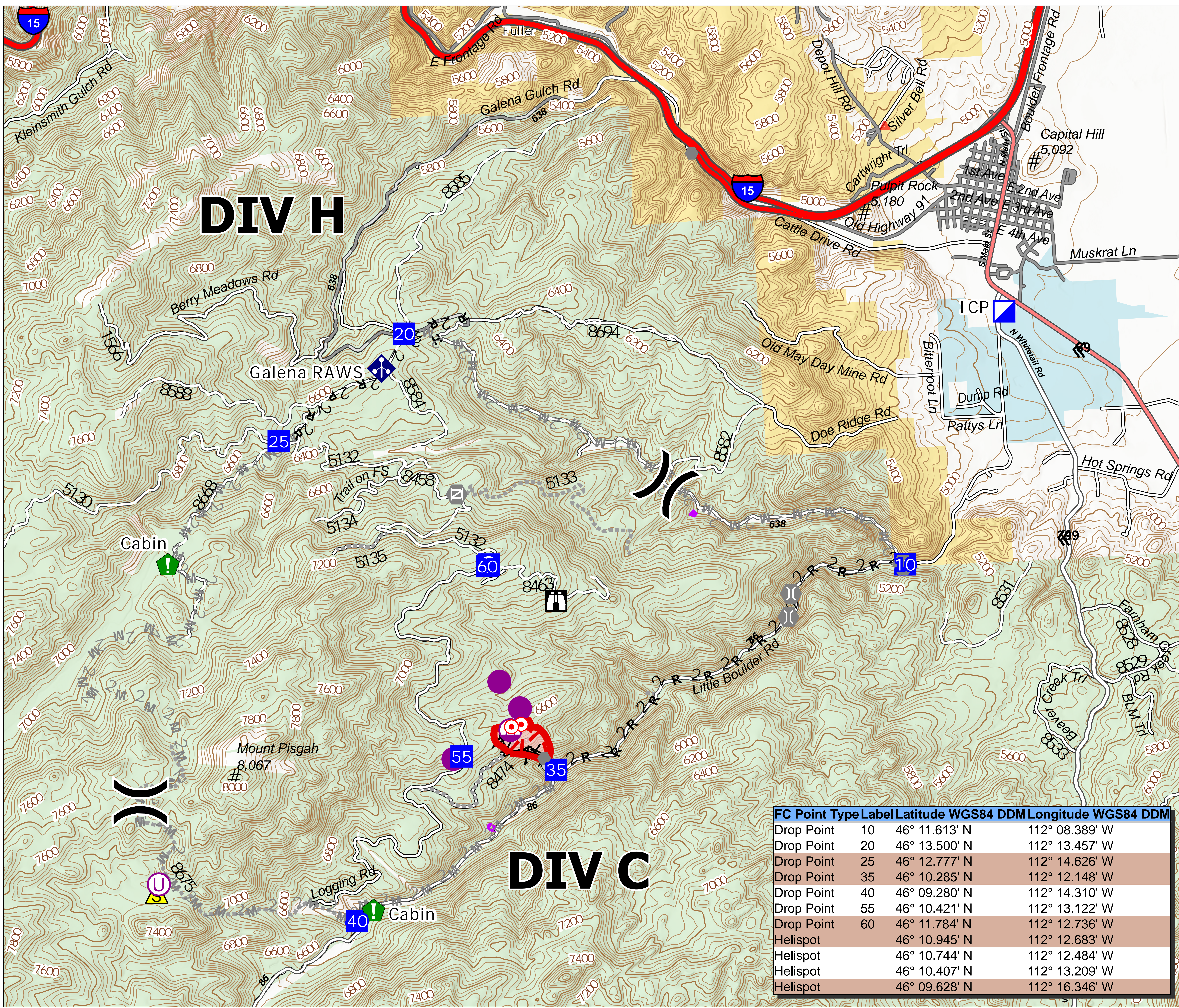
Gatlin Gulch  
MTBDF-006338  
60 Acres  
08/06/2021

Fire Perimeter: 04 August 2021 2129



0 0.5 1 Miles

- Helispot
- ⚡ Sling Site
- ⊕ Unimproved Landing Area
- ⌘ Division Break
- 🚒 Incident Command Post
- 📍 Drop Point
- 📦 Staging Area
- 🏠 Lookout
- 🔥 Hot Spot - Spot Fire
- ⬭ Other
- ⚡ Gate
- 🌉 Bridge
- 🌲 Resource Location
- ⚠ Safety Zone
- Ops Completed
- ⌘ Completed Fuel Break
- ⌘ Completed Hand Line
- ⌘ Completed Road as Line
- Ops Planned
- ⌘ Planned Mixed Construction Line
- Reference
- ⌘ Access or Improved Road
- Air Ops
- 📍 Route
- Fire Perimeter
- 🔥 Fire Edge
- ⌘ Paved
- ⌘ Gravel Road
- ⌘ Dirt Road
- ⌘ Unimproved Road
- ⌘ Forest Service Roads Closed



FC Point	Type	Label	Latitude WGS84 DDM	Longitude WGS84 DDM
Drop Point	10		46° 11.613' N	112° 08.389' W
Drop Point	20		46° 13.500' N	112° 13.457' W
Drop Point	25		46° 12.777' N	112° 14.626' W
Drop Point	35		46° 10.285' N	112° 12.148' W
Drop Point	40		46° 09.280' N	112° 14.310' W
Drop Point	55		46° 10.421' N	112° 13.122' W
Drop Point	60		46° 11.784' N	112° 12.736' W
Helispot			46° 10.945' N	112° 12.683' W
Helispot			46° 10.744' N	112° 12.484' W
Helispot			46° 10.407' N	112° 13.209' W
Helispot			46° 09.628' N	112° 16.346' W