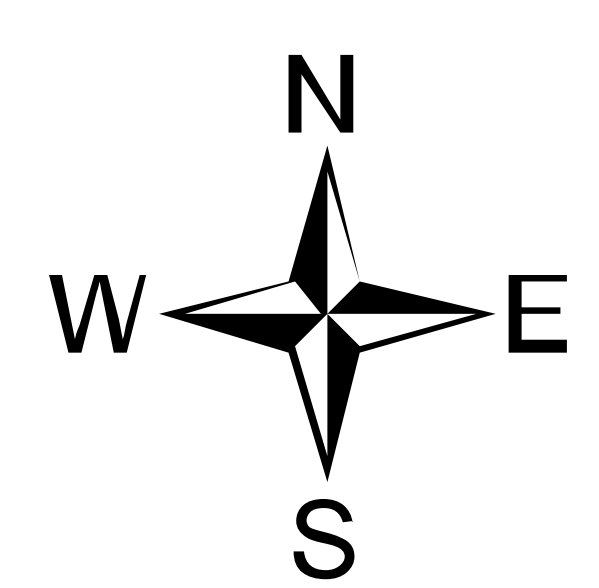


Operations

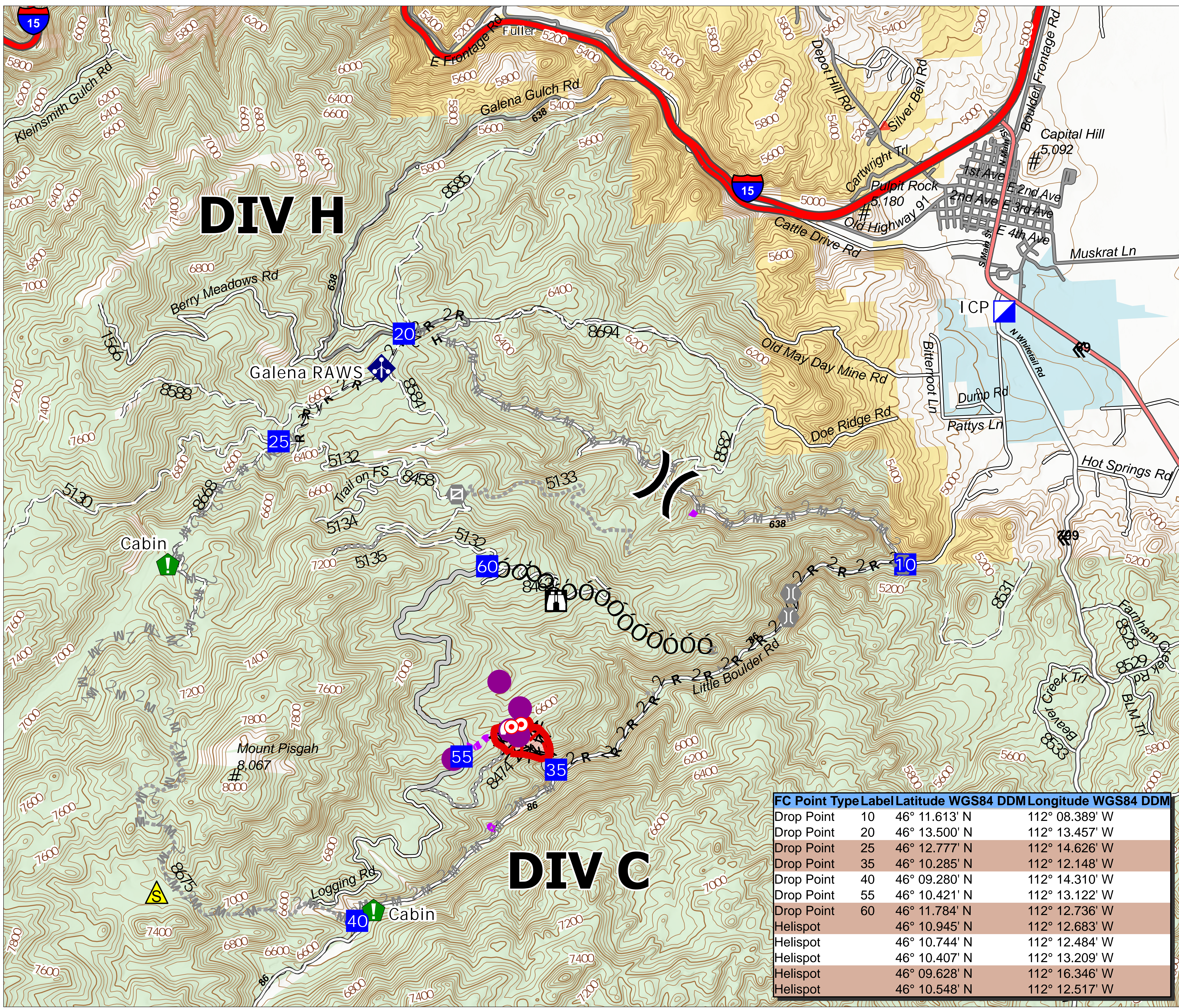
Gatlin Gulch
MTBDF-006338
60 Acres
08/07/2021

Fire Perimeter: 04 August 2021 2129



0 0.5 1 Miles

- Helispot
- ⊕ Sling Site
-) Division Break
- Incident Command Post
- Drop Point
- ⊠ Lookout
- Hot Spot - Spot Fire
- ⊙ Gate
- ⊙ Bridge
- 📍 Resource Location
- ⚡ Mobile Weather Unit
- ⚠ Safety Zone
- Ops Completed
- Completed Dozer Line
- / Completed Fuel Break
- Completed Hand Line
- Completed Road as Line
- Ops Planned
- Planned Hand Line
- Planned Mixed Construction Line
- Reference
- ⊠ Access or Improved Road
- Air Ops
- Route
- Fire Perimeter
- Fire Edge
- ⊠ Paved
- ⊠ Gravel Road
- ⊠ Dirt Road
- ⊠ Unimproved Road
- Forest Service Roads Closed



DIV H

DIV C

FC Point	Type	Label	Latitude WGS84 DDM	Longitude WGS84 DDM
Drop Point	10		46° 11.613' N	112° 08.389' W
Drop Point	20		46° 13.500' N	112° 13.457' W
Drop Point	25		46° 12.777' N	112° 14.626' W
Drop Point	35		46° 10.285' N	112° 12.148' W
Drop Point	40		46° 09.280' N	112° 14.310' W
Drop Point	55		46° 10.421' N	112° 13.122' W
Drop Point	60		46° 11.784' N	112° 12.736' W
Helispot			46° 10.945' N	112° 12.683' W
Helispot			46° 10.744' N	112° 12.484' W
Helispot			46° 10.407' N	112° 13.209' W
Helispot			46° 09.628' N	112° 16.346' W
Helispot			46° 10.548' N	112° 12.517' W