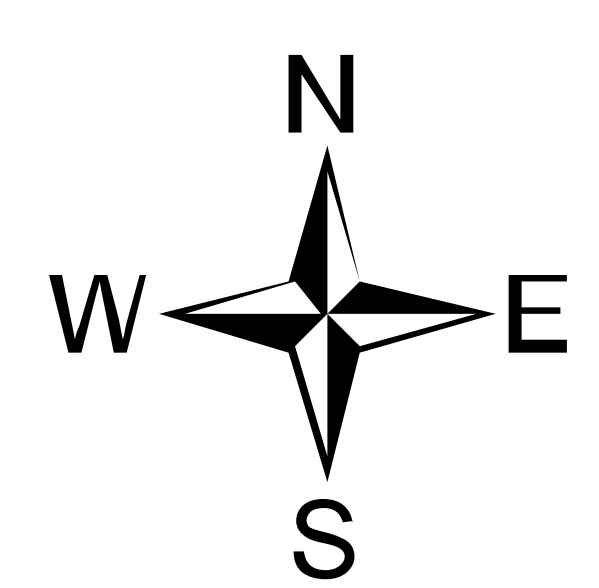


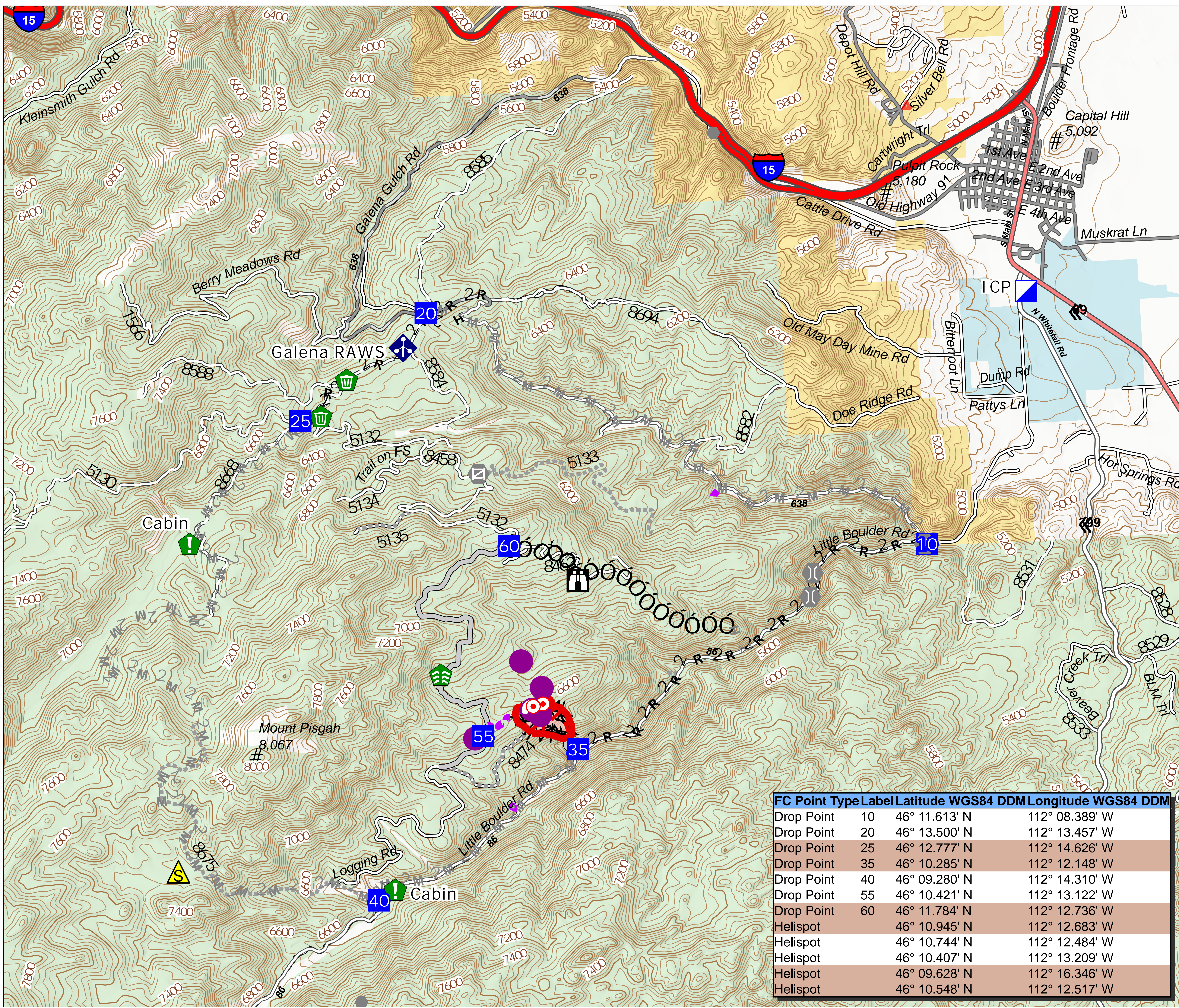
# Operations

Gatlin Gulch  
MTBDF-006338  
60 Acres  
08/09/2021

Fire Perimeter: 04 August 2021 2129



0 0.5 1 Miles



FC Point Type	Label	Latitude WGS84 DDM	Longitude WGS84 DDM
Drop Point	10	46° 11.613' N	112° 08.389' W
Drop Point	20	46° 13.500' N	112° 13.457' W
Drop Point	25	46° 12.777' N	112° 14.626' W
Drop Point	35	46° 10.285' N	112° 12.148' W
Drop Point	40	46° 09.280' N	112° 14.310' W
Drop Point	55	46° 10.421' N	112° 13.122' W
Drop Point	60	46° 11.784' N	112° 12.736' W
Helispot		46° 10.945' N	112° 12.683' W
Helispot		46° 10.744' N	112° 12.484' W
Helispot		46° 10.407' N	112° 13.209' W
Helispot		46° 09.628' N	112° 16.346' W
Helispot		46° 10.548' N	112° 12.517' W

- Helispot
- Sling Site
- Incident Command Post
- Drop Point
- Lookout
- Hot Spot - Spot Fire
- Other
- Gate
- Bridge
- Stream Crossing
- Resource Location
- Clean Up Area
- Mobile Weather Unit
- Safety Zone
- Ops Completed
- Completed Dozer Line
- / Completed Fuel Break
- Completed Hand Line
- Completed Road as Line
- Ops Planned
- Planned Hand Line
- Planned Mixed Construction Line
- Reference
- Access or Improved Road
- Air Ops
- Route
- Fire Perimeter
- Fire Edge
- Paved
- Gravel Road
- Dirt Road
- Unimproved Road
- Forest Service Roads Closed