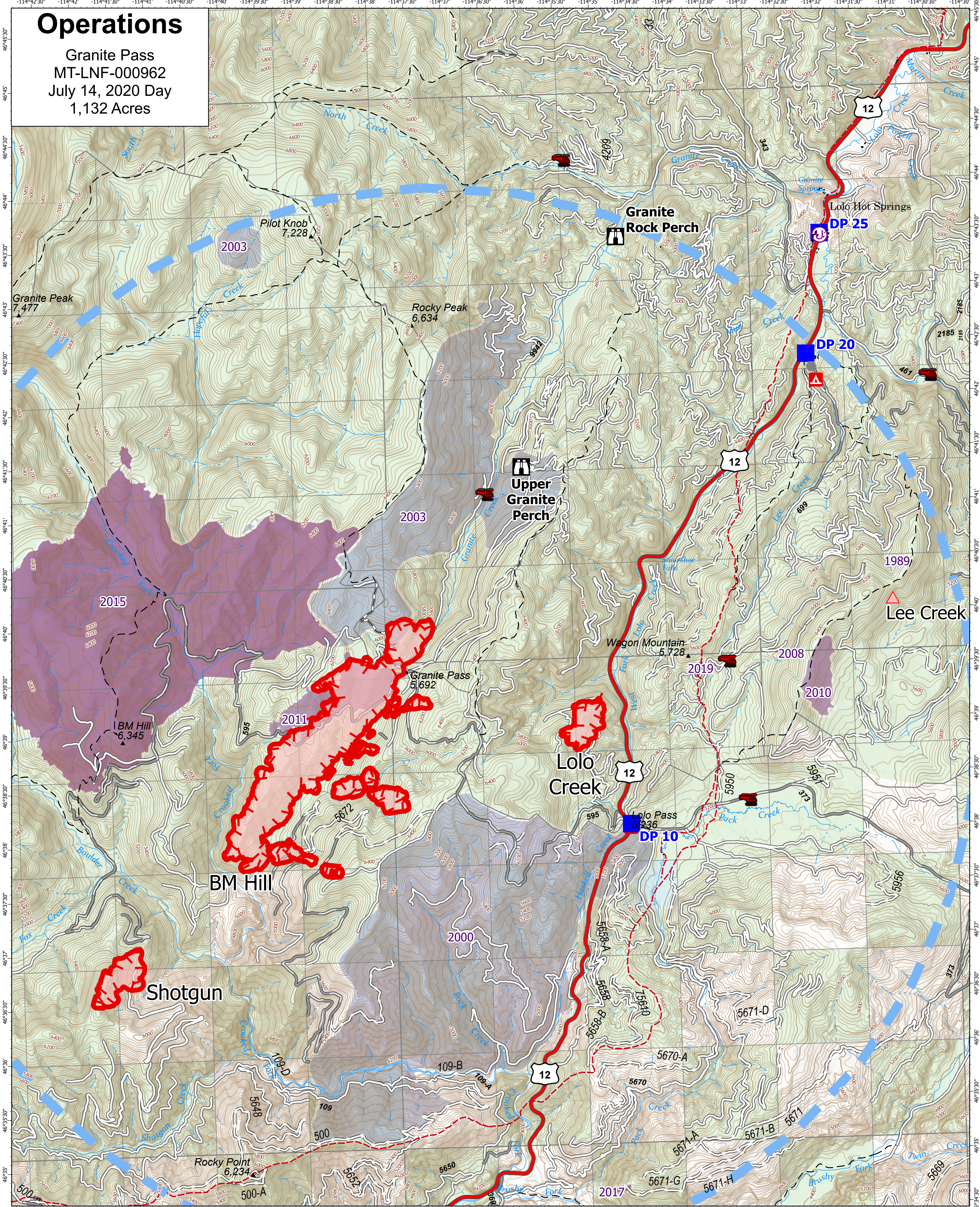


# Operations

Granite Pass  
 MT-LNF-000962  
 July 14, 2020 Day  
 1,132 Acres



- |                               |                     |                    |                         |
|-------------------------------|---------------------|--------------------|-------------------------|
| Wildfire Daily Fire Perimeter | Dirt Road           | State Public Lands | Other                   |
| Temporary Flight Restriction  | Unimproved Road     | 2005 - 2009        | Unimproved Landing Area |
| Fire Edge                     | Closed FS Road      | 2010 - 2014        | Drop Point              |
| Paved FS Road                 | Forest Service Land | 2015 - 2020        | Building Footprint      |
| Gravel Road                   | Lookout             | 1985 - 1989        |                         |
|                               |                     | 2000 - 2004        |                         |

Fire perimeter updated from Mixed Methods on 07/13/2021 0030

0 0.3 0.6 0.9 1.2 Miles

1 inch equals 7 miles Scale: 1:37,500

Remote Incident Support Team  
 7/14/2021 0750  
 North American 1983 Datum. Lat/Long Grid