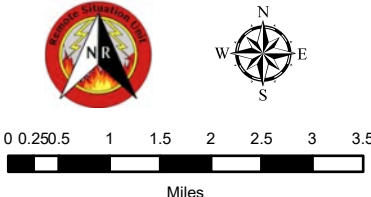
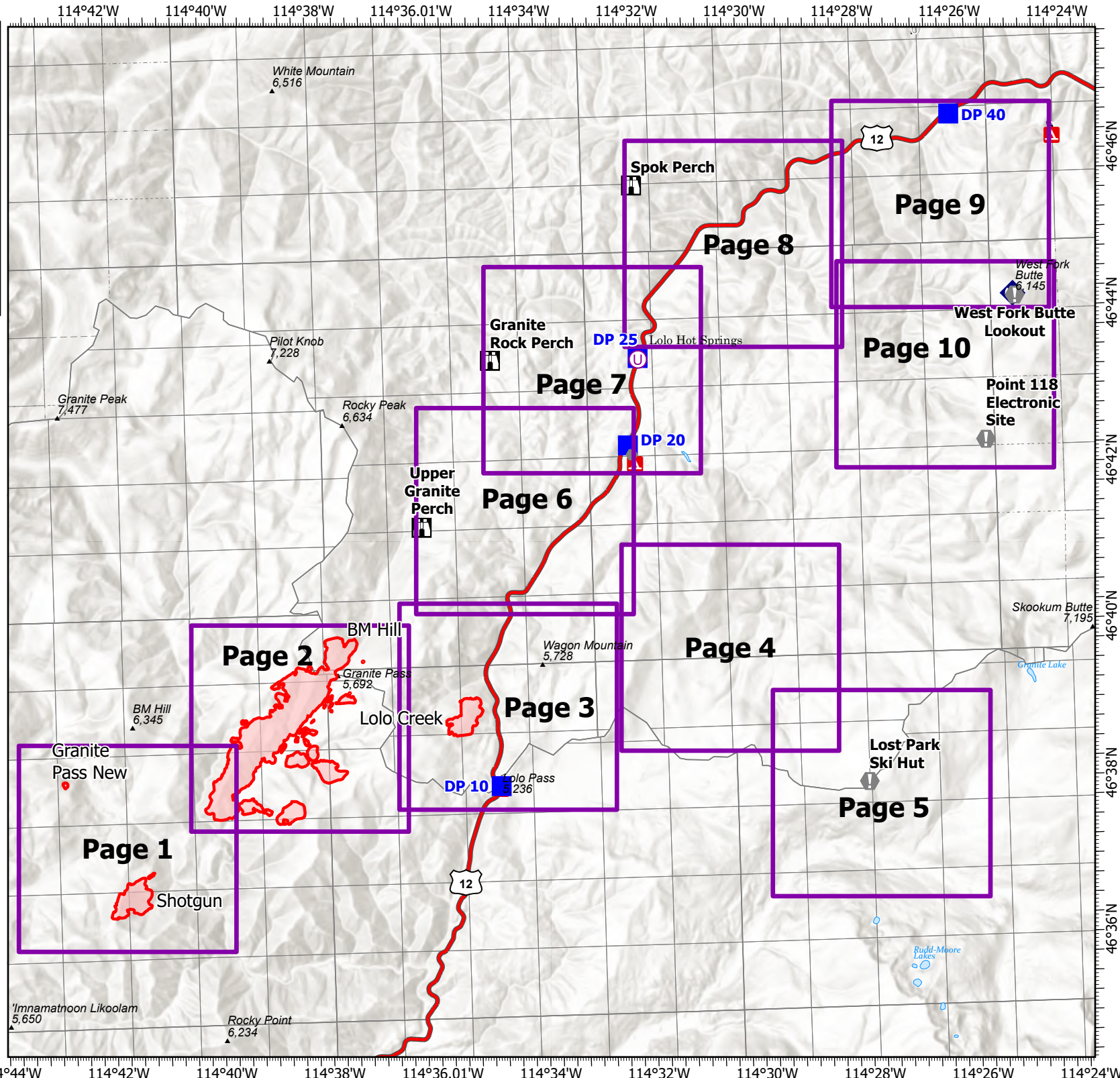


**IAP**  
**Granite Pass**  
 MT-LNF-000962  
 July 15, 2021 Day  
 1,438 acres at 7/14/21 11pm

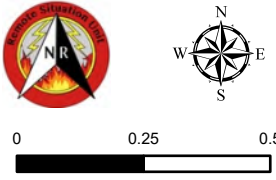


0 0.250.5 1 1.5 2 2.5 3 3.5  
 Miles


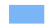



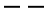
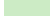
-  Wildfire Daily Fire Perimeter
-  Unimproved Landing Area
-  Drop Point
-  Lookout
-  Value at Risk
-  Other
-  Repeater

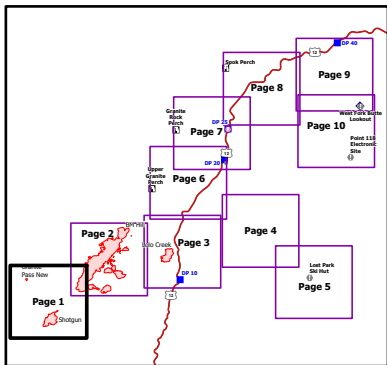


**IAP**  
**Granite Pass**  
 MT-LNF-000962  
 July 15, 2021 Day  
 1,438 acres at 7/14/21 11pm



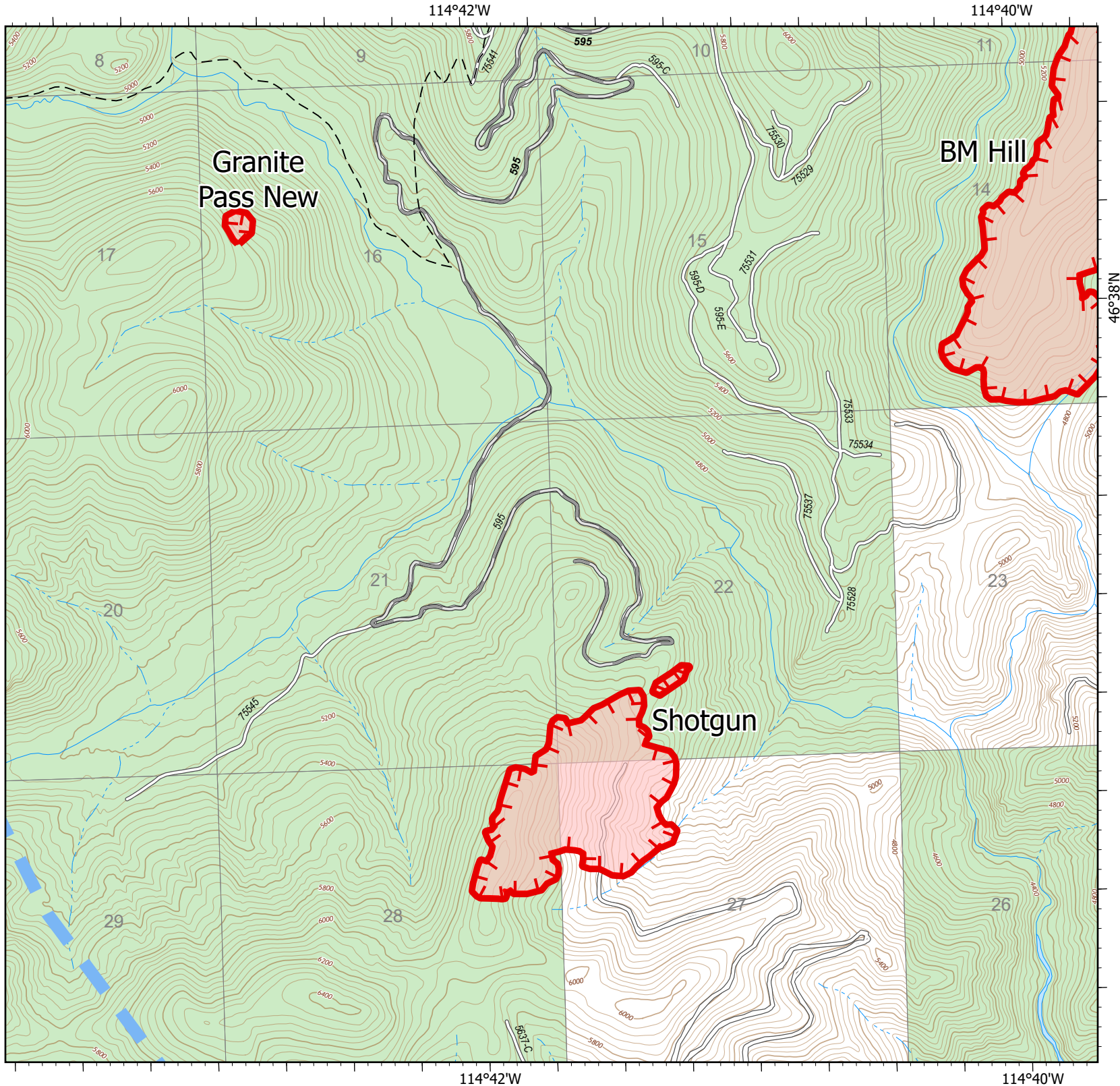
0 0.25 0.5  
 Miles

-  Wildfire Daily Fire Perimeter
-  Temporary Flight Restriction
-  Fire Edge
-  Gravel Road
-  Dirt Road
-  Trail
-  Forest Service Land



Page 1 of 10

7/15/2021 0733



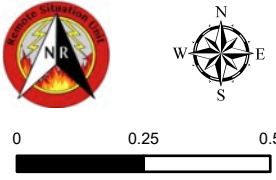
114°40'W

114°38'W





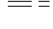

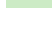
46°40'N

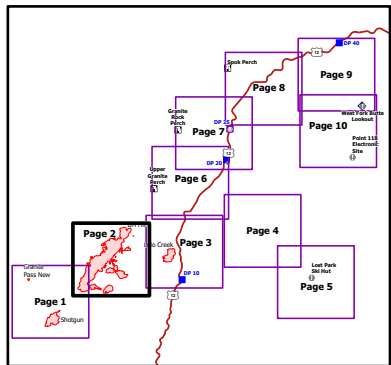
46°38'N

**IAP**  
**Granite Pass**  
 MT-LNF-000962  
 July 15, 2021 Day  
 1,438 acres at 7/14/21 11pm



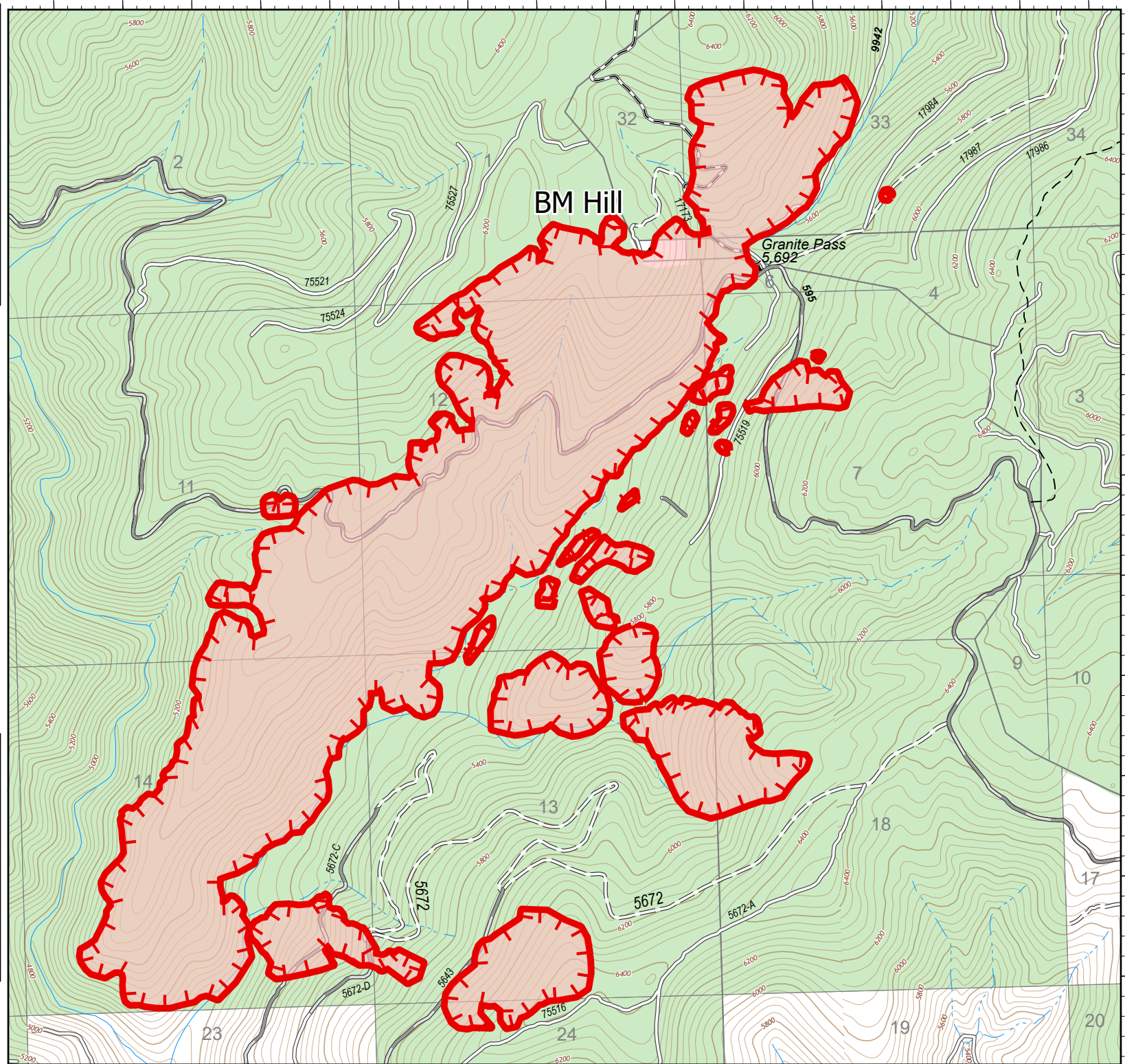
0 0.25 0.5  
Miles

-  Wildfire Daily Fire Perimeter
-  Fire Edge
-  Gravel Road
-  Dirt Road
-  Unimproved Road
-  Trail
-  Forest Service Land



Page 2 of 10

7/15/2021 0733



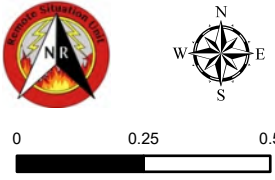
114°40'W

114°38'W


114°36'W

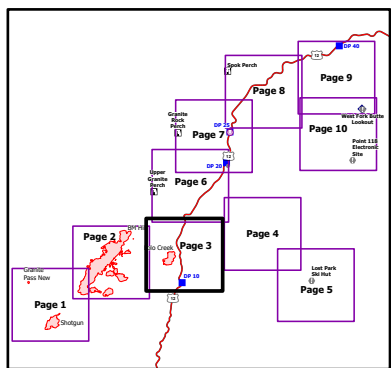
114°34'W

**IAP**  
**Granite Pass**  
 MT-LNF-000962  
 July 15, 2021 Day  
 1,438 acres at 7/14/21 11pm



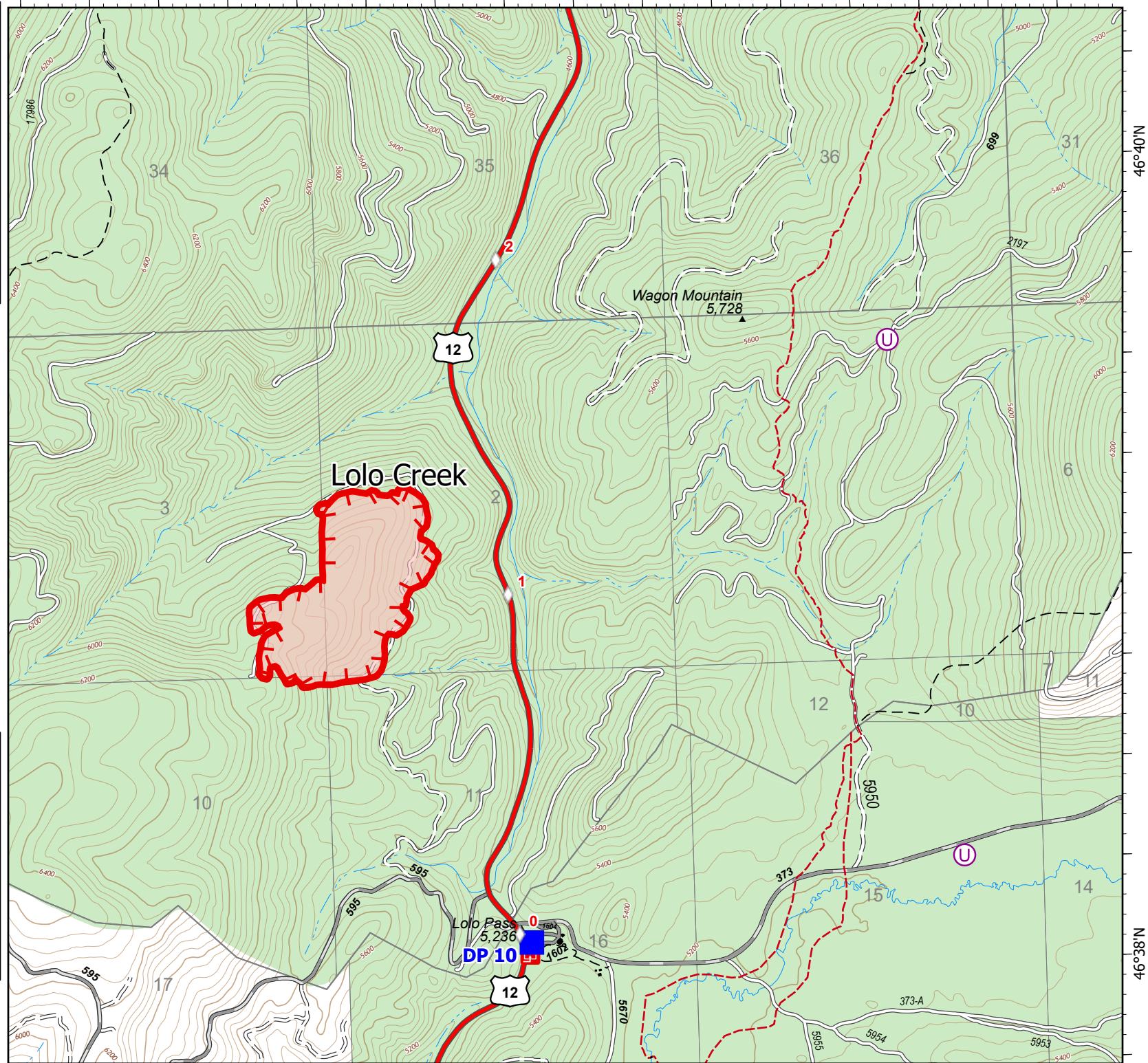
0 0.25 0.5  
Miles

-  Wildfire Daily Fire Perimeter
-  Fire Edge
-  Drop Point
-  Paved FS Road
-  Gravel Road
-  Dirt Road
-  Unimproved Road
-  Trail
-  National Designated Trail
-  Forest Service Land



Page 3 of 10

7/15/2021 0733



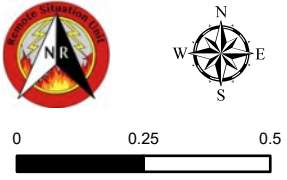
114°36'W

114°34'W

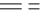
46°40'N

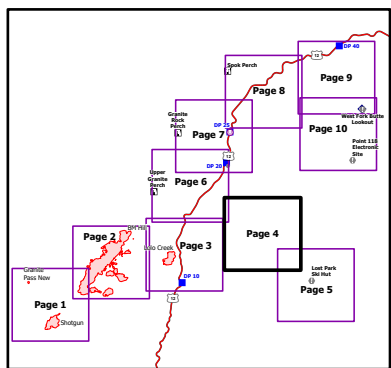
46°38'N

**IAP**  
**Granite Pass**  
 MT-LNF-000962  
 July 15, 2021 Day  
 1,438 acres at 7/14/21 11pm



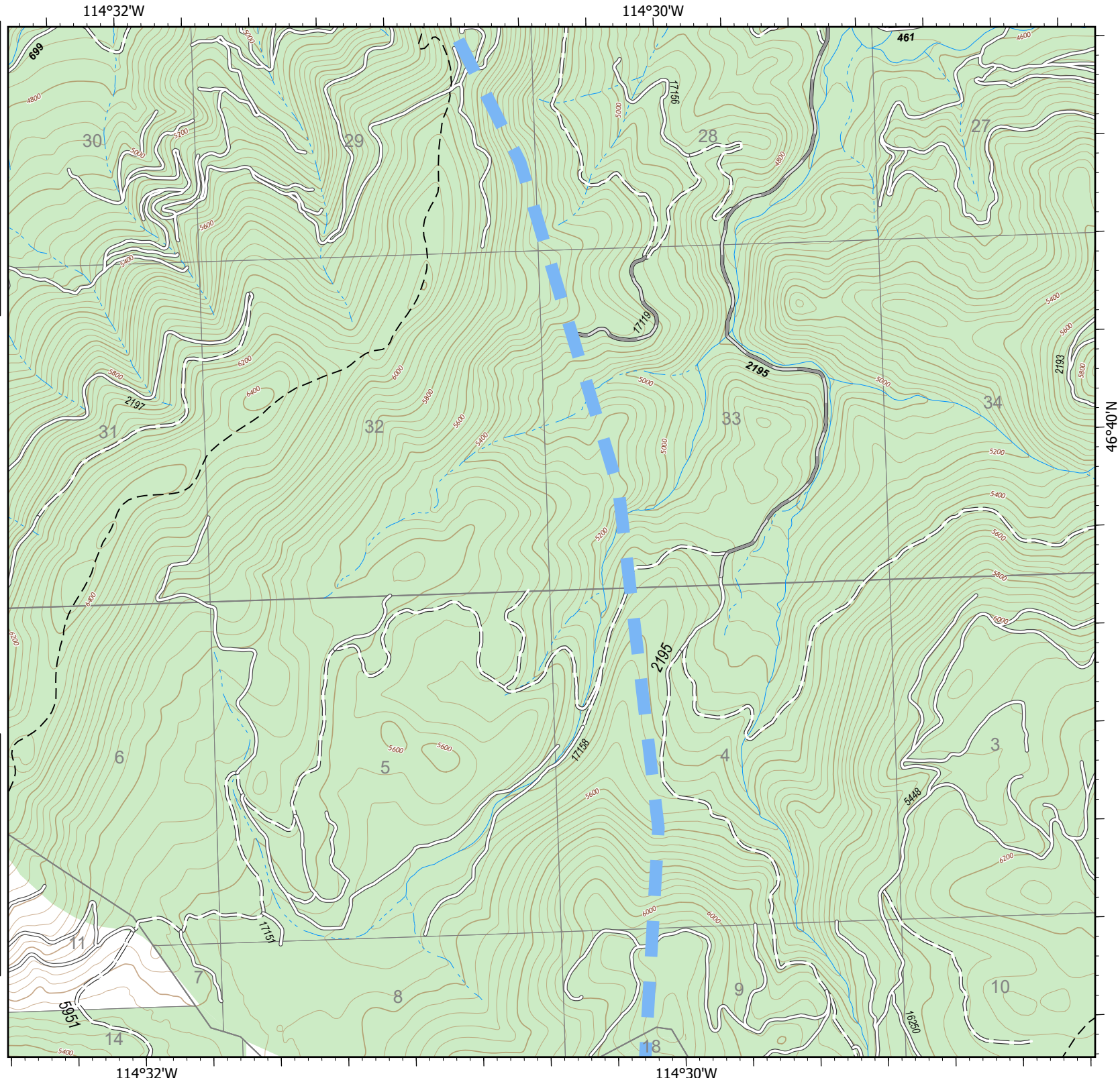
0 0.25 0.5  
 Miles

-  Temporary Flight Restriction
-  Gravel Road
-  Dirt Road
-  Unimproved Road
-  Trail
-  Forest Service Land

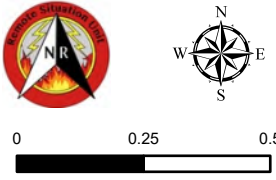


Page 4 of 10

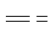
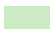
7/15/2021 0733

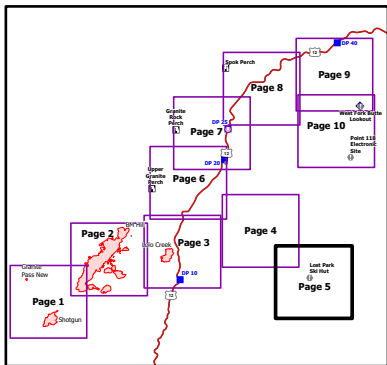
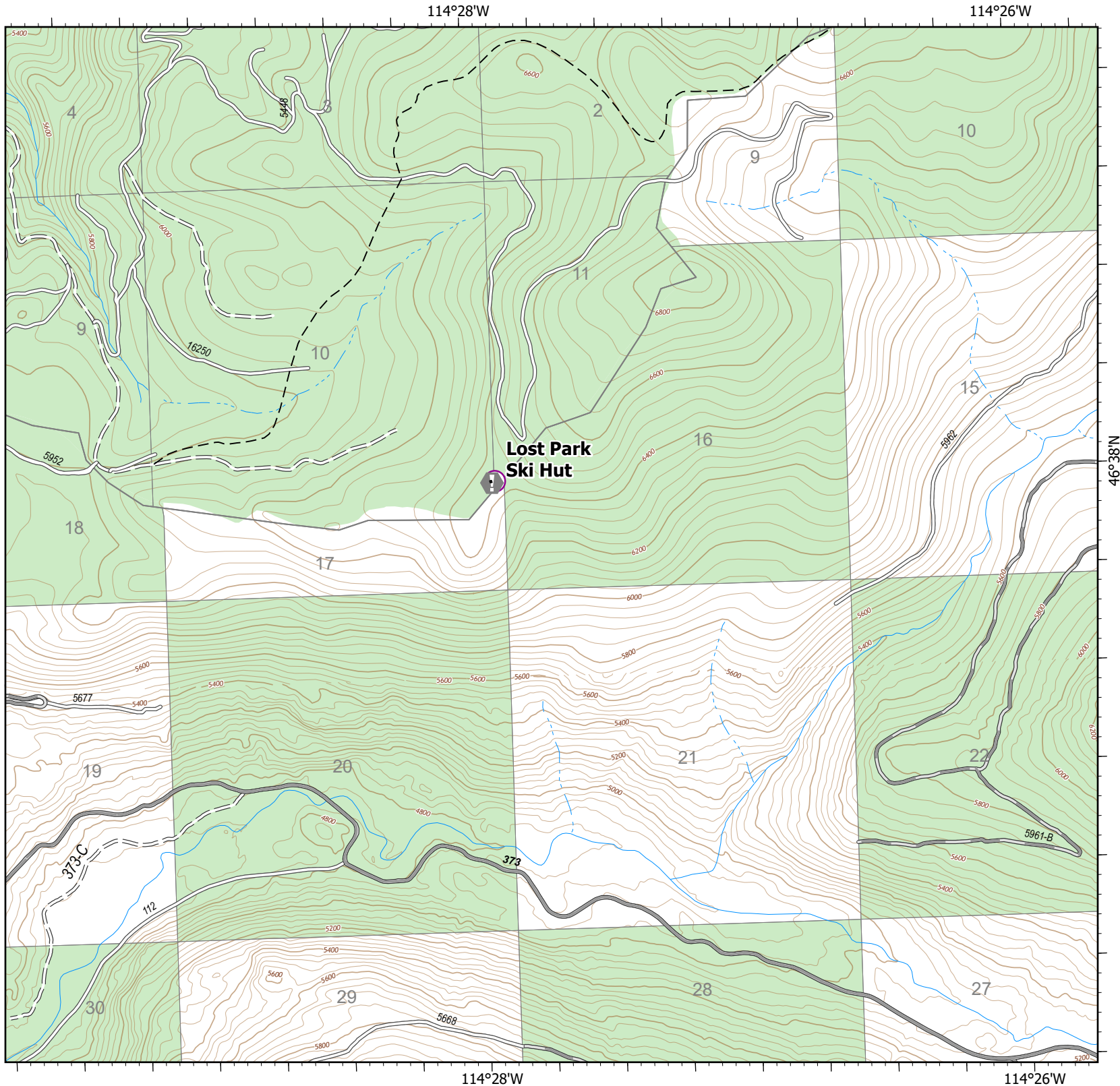


**IAP**  
**Granite Pass**  
 MT-LNF-000962  
 July 15, 2021 Day  
 1,438 acres at 7/14/21 11pm



0 0.25 0.5  
 Miles

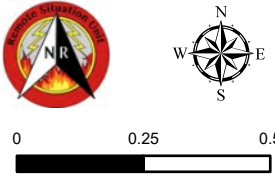
-  Value at Risk
-  Gravel Road
-  Dirt Road
-  Unimproved Road
-  Trail
-  Forest Service Land



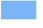






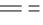
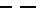

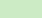
114°36.01'W

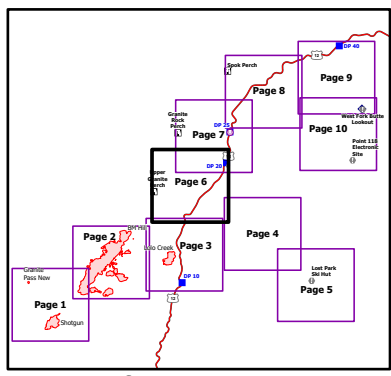
114°34'W

**IAP**  
**Granite Pass**  
 MT-LNF-000962  
 July 15, 2021 Day  
 1,438 acres at 7/14/21 11pm



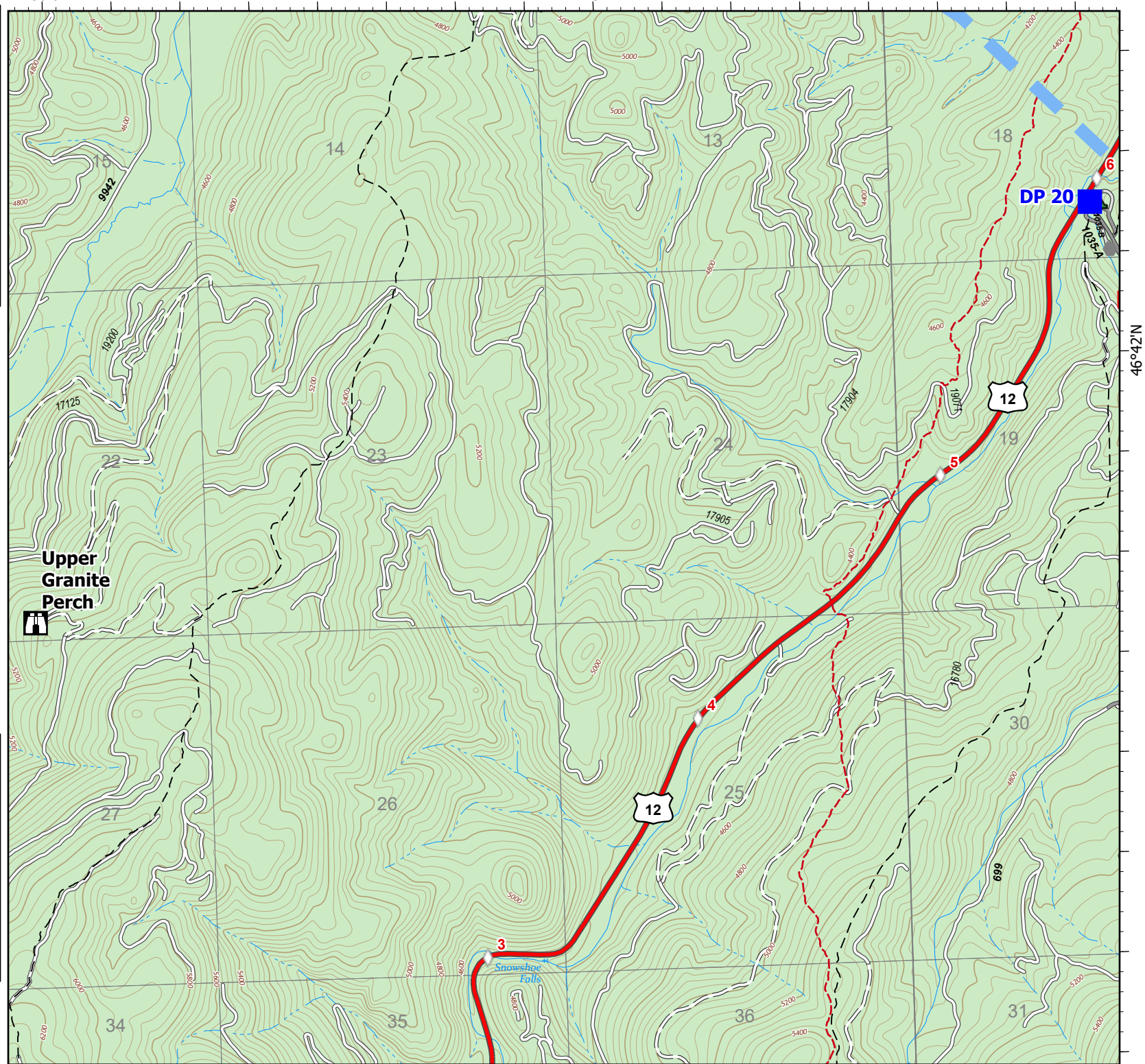
0 0.25 0.5  
Miles

-  Temporary Flight Restriction
-  Drop Point
-  Lookout
-  Other
-  Paved FS Road
-  Gravel Road
-  Dirt Road
-  Unimproved Road
-  Trail
-  National Designated Trail
-  Forest Service Land



Page 6 of 10

7/15/2021 0733



114°36.01'W

114°34'W

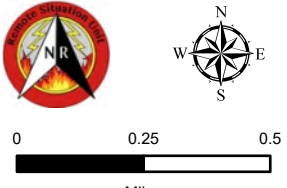
46°42'N

# IAP

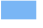










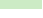
## Granite Pass

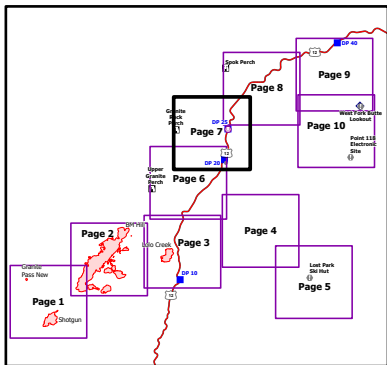
MT-LNF-000962  
July 15, 2021 Day

1,438 acres at 7/14/21 11pm



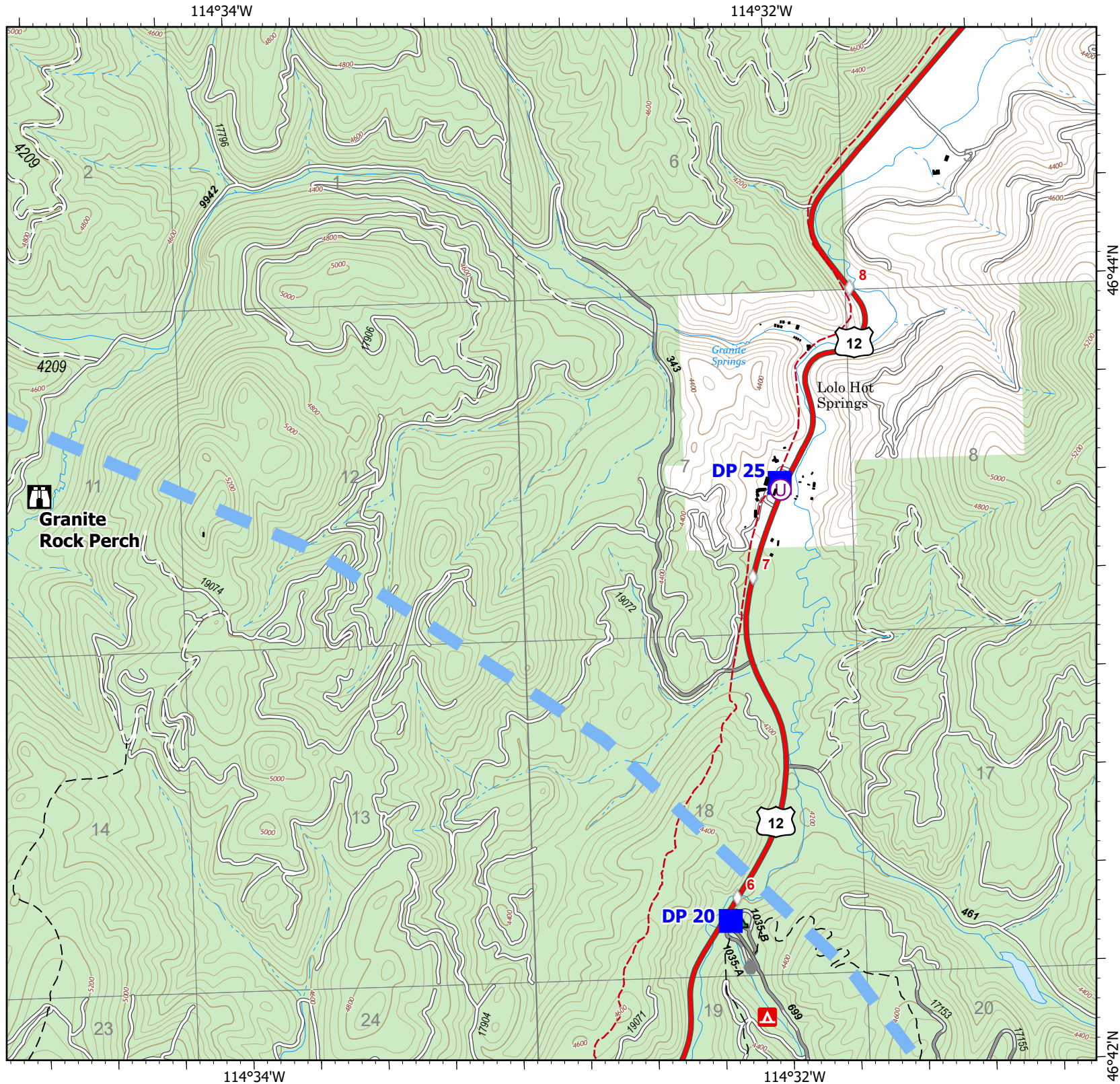
0 0.25 0.5  
Miles

-  Temporary Flight Restriction
-  Unimproved Landing Area
-  Drop Point
-  Lookout
-  Other
-  Paved FS Road
-  Gravel Road
-  Dirt Road
-  Unimproved Road
-  Trail
-  National Designated Trail
-  Forest Service Land



Page 7 of 10

7/15/2021 0733





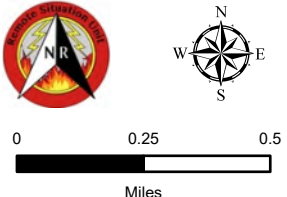
114°32'W

114°30'W





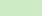
46°46'N

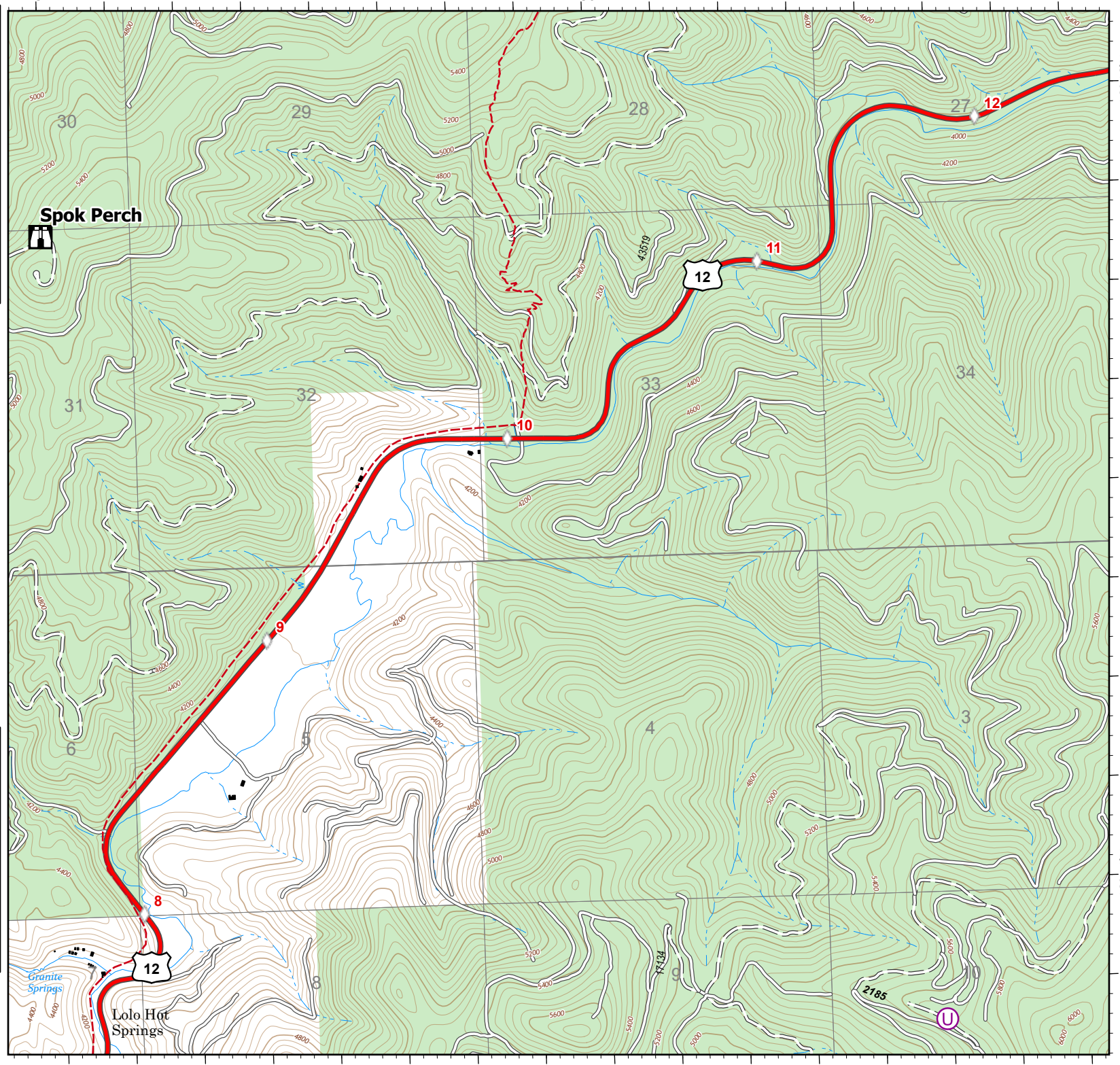
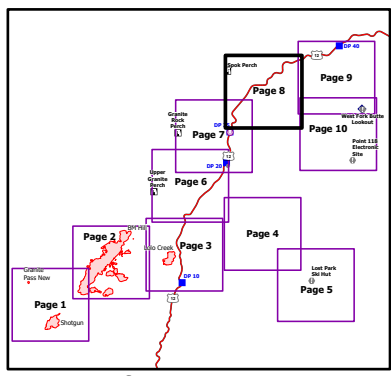
46°44'N

**IAP**  
**Granite Pass**  
 MT-LNF-000962  
 July 15, 2021 Day  
 1,438 acres at 7/14/21 11pm



0 0.25 0.5  
Miles

-  Lookout
-  Dirt Road
-  Unimproved Road
-  National Designated Trail
-  Forest Service Land



114°32'W

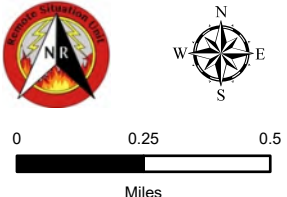
114°30'W

# IAP





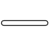
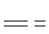
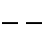

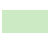
## Granite Pass

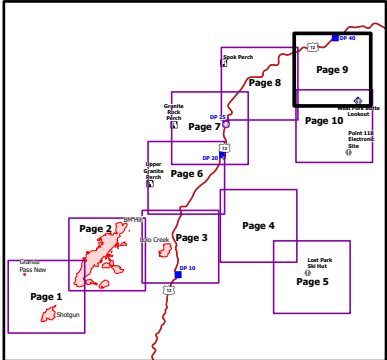
MT-LNF-000962  
July 15, 2021 Day

1,438 acres at 7/14/21 11pm



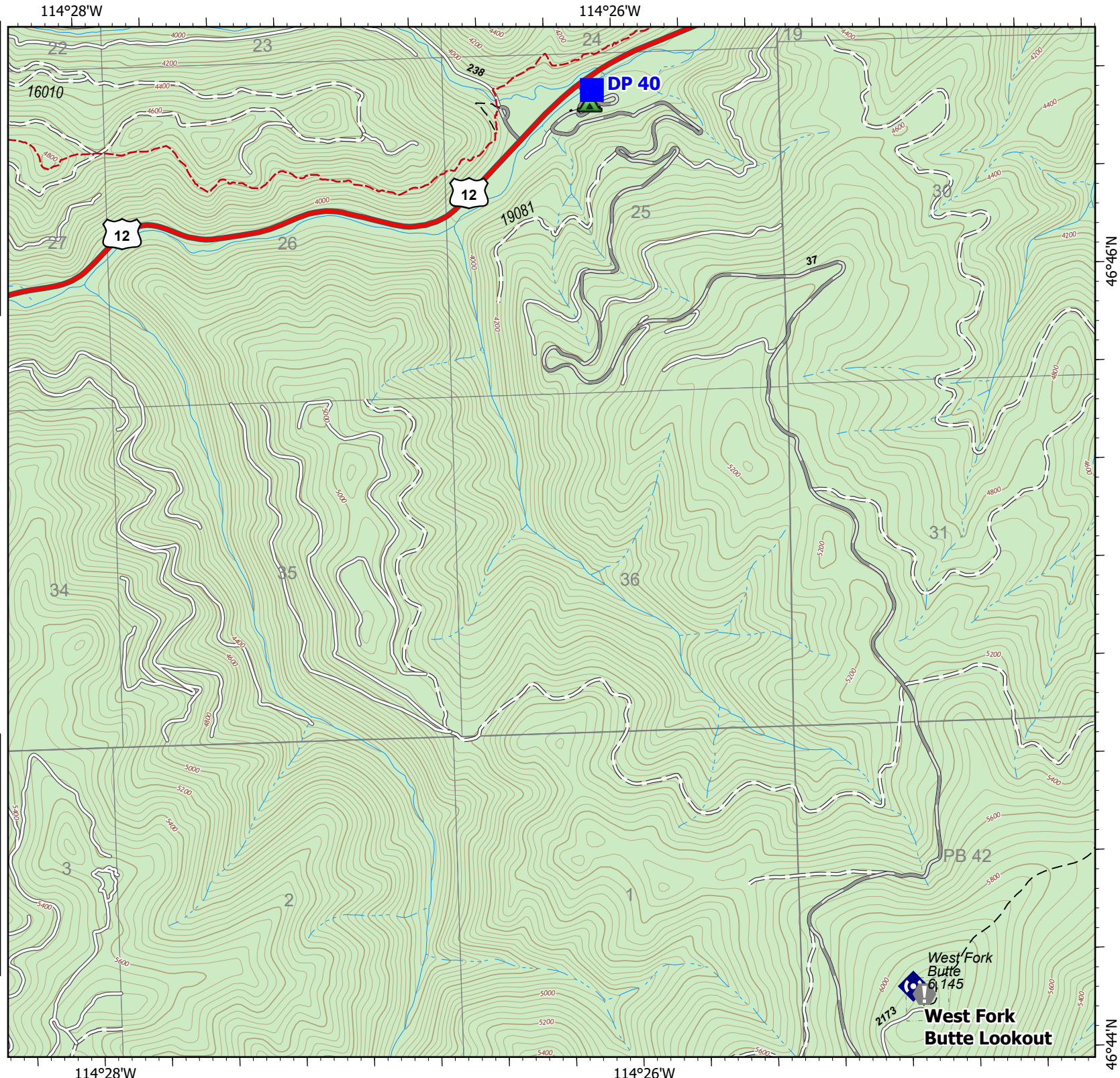
0 0.25 0.5  
Miles

-  Drop Point
-  Value at Risk
-  Repeater
-  Gravel Road
-  Dirt Road
-  Unimproved Road
-  Trail
-  National Designated Trail
-  Forest Service Land



Page 9 of 10

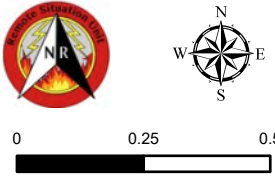
7/15/2021 0734



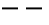
114°28'W

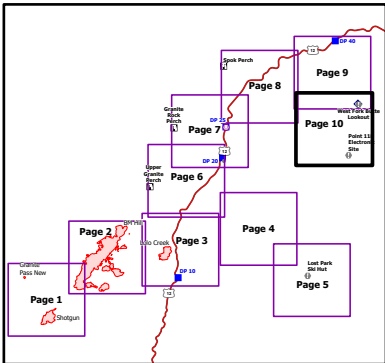
114°26'W

**IAP**  
**Granite Pass**  
 MT-LNF-000962  
 July 15, 2021 Day  
 1,438 acres at 7/14/21 11pm



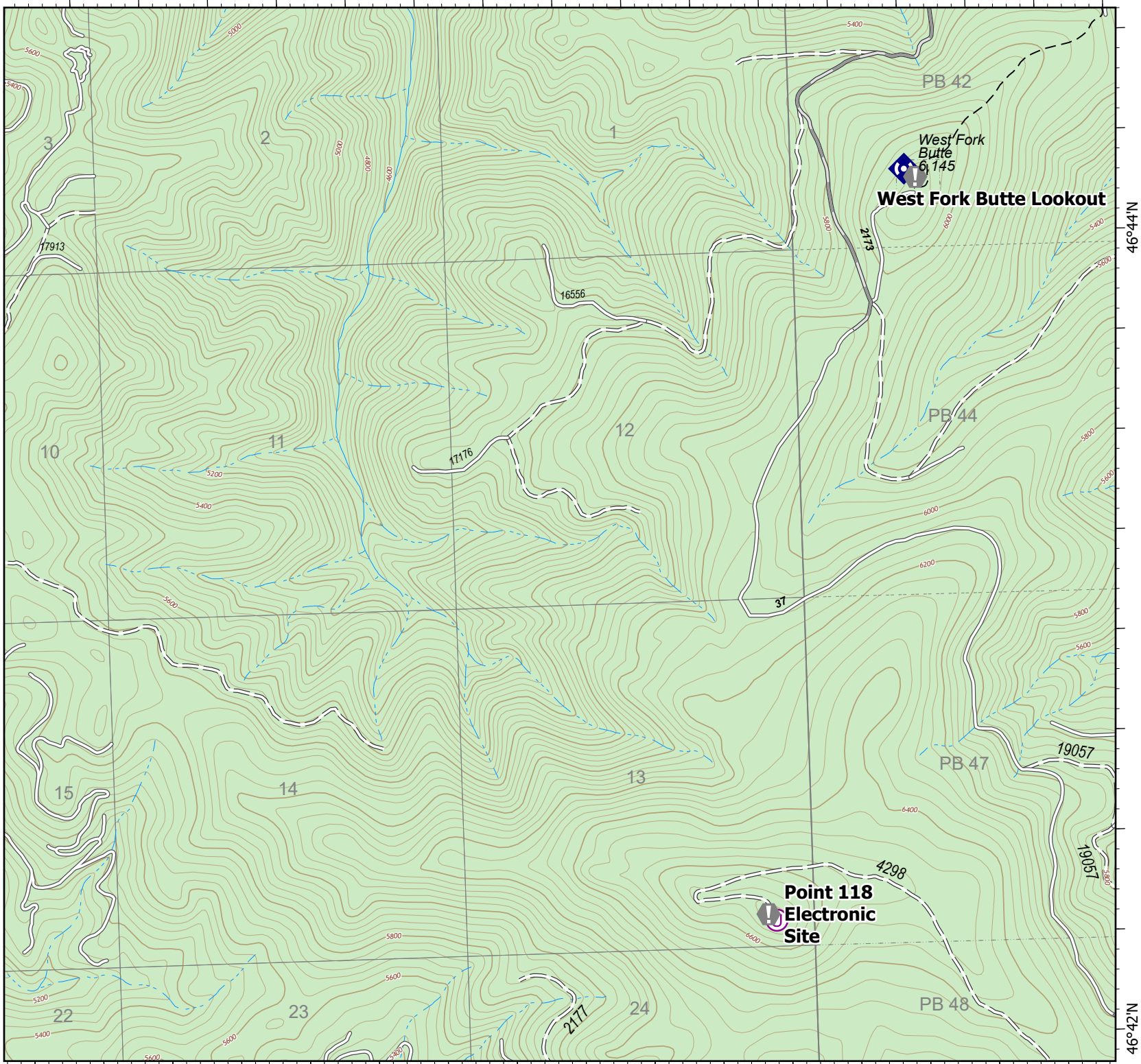
0 0.25 0.5  
 Miles

-  Value at Risk
-  Repeater
-  Gravel Road
-  Dirt Road
-  Unimproved Road
-  Trail
-  Forest Service Land



Page 10 of 10

7/15/2021 0734



114°28'W

114°26'W

46°44'N

46°42'N