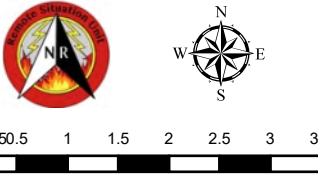







IAP
Granite Pass
 MT-LNF-000962
 July 16, 2021 Day
 1,438 acres at 7/14/21 11pm

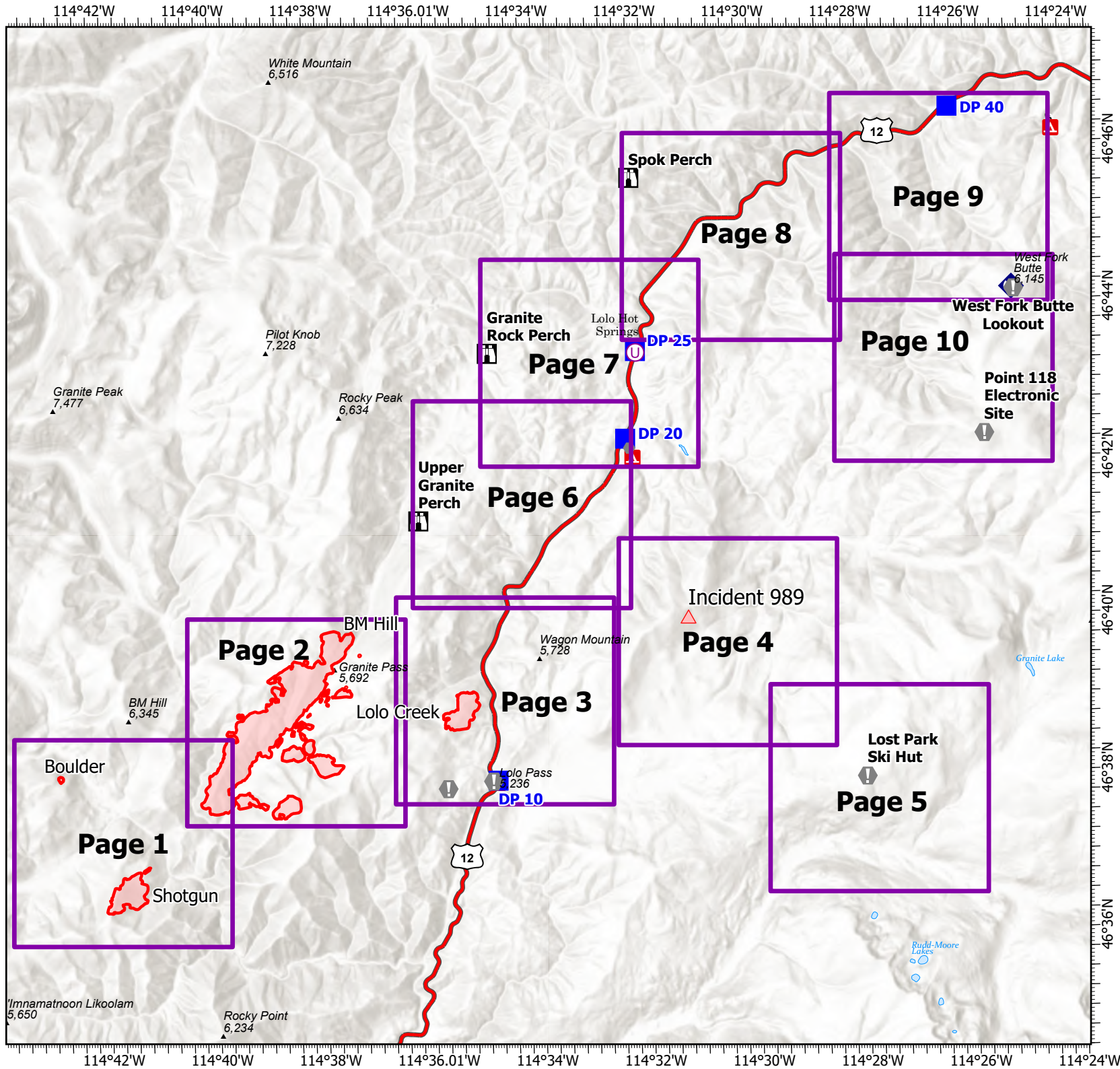


0 0.250.5 1 1.5 2 2.5 3 3.5
 Miles

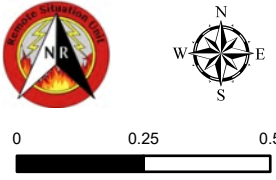
-  Wildfire Daily Fire Perimeter
-  Unimproved Landing Area
-  Drop Point
-  Lookout
-  Value at Risk
-  Other
-  Repeater
-  OtherPoints




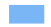



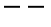
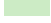
Remote Incident Support Team
 7/15/2021 2005
 NAD 1983 UTM Zone 11N

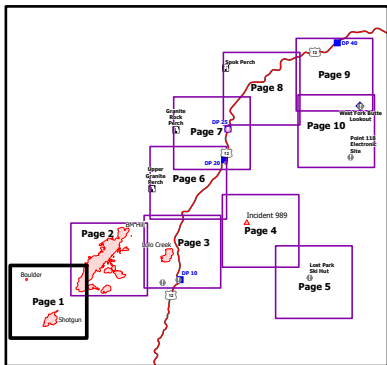


IAP
Granite Pass
 MT-LNF-000962
 July 16, 2021 Day
 1,438 acres at 7/14/21 11pm



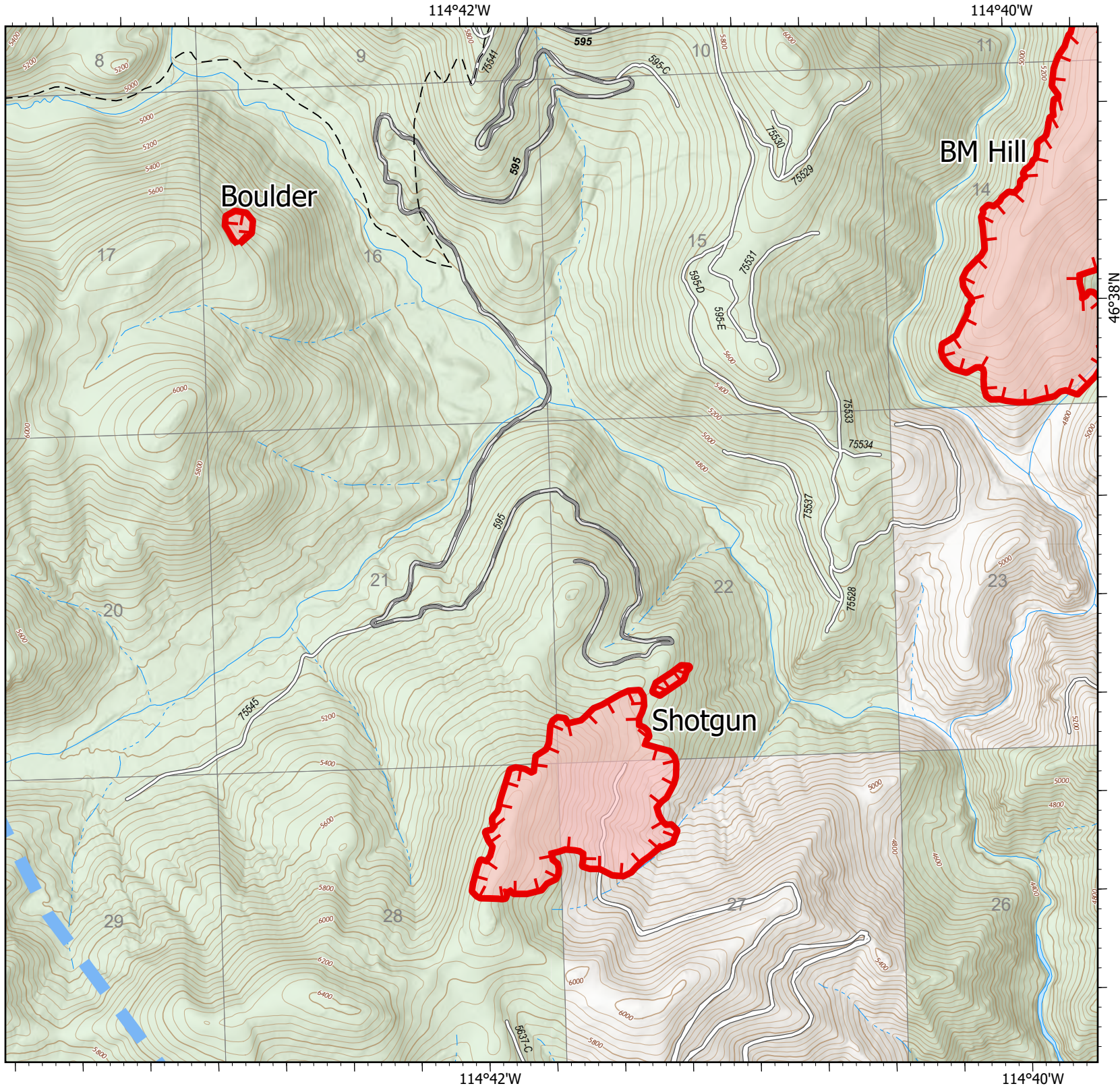
0 0.25 0.5
 Miles

-  Wildfire Daily Fire Perimeter
-  Temporary Flight Restriction
-  Fire Edge
-  Gravel Road
-  Dirt Road
-  Trail
-  Forest Service Land



Page 1 of 10

7/15/2021 0001



114°42'W

114°40'W

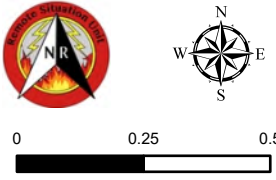
114°40'W

114°38'W





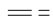
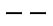
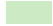
46°40'N

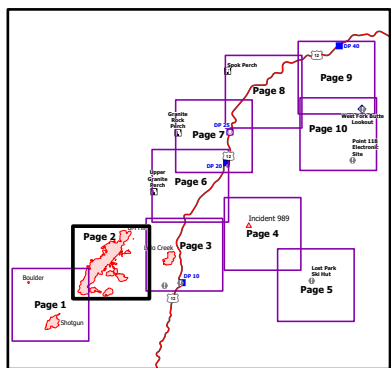
46°38'N

IAP
Granite Pass
 MT-LNF-000962
 July 16, 2021 Day
 1,438 acres at 7/14/21 11pm



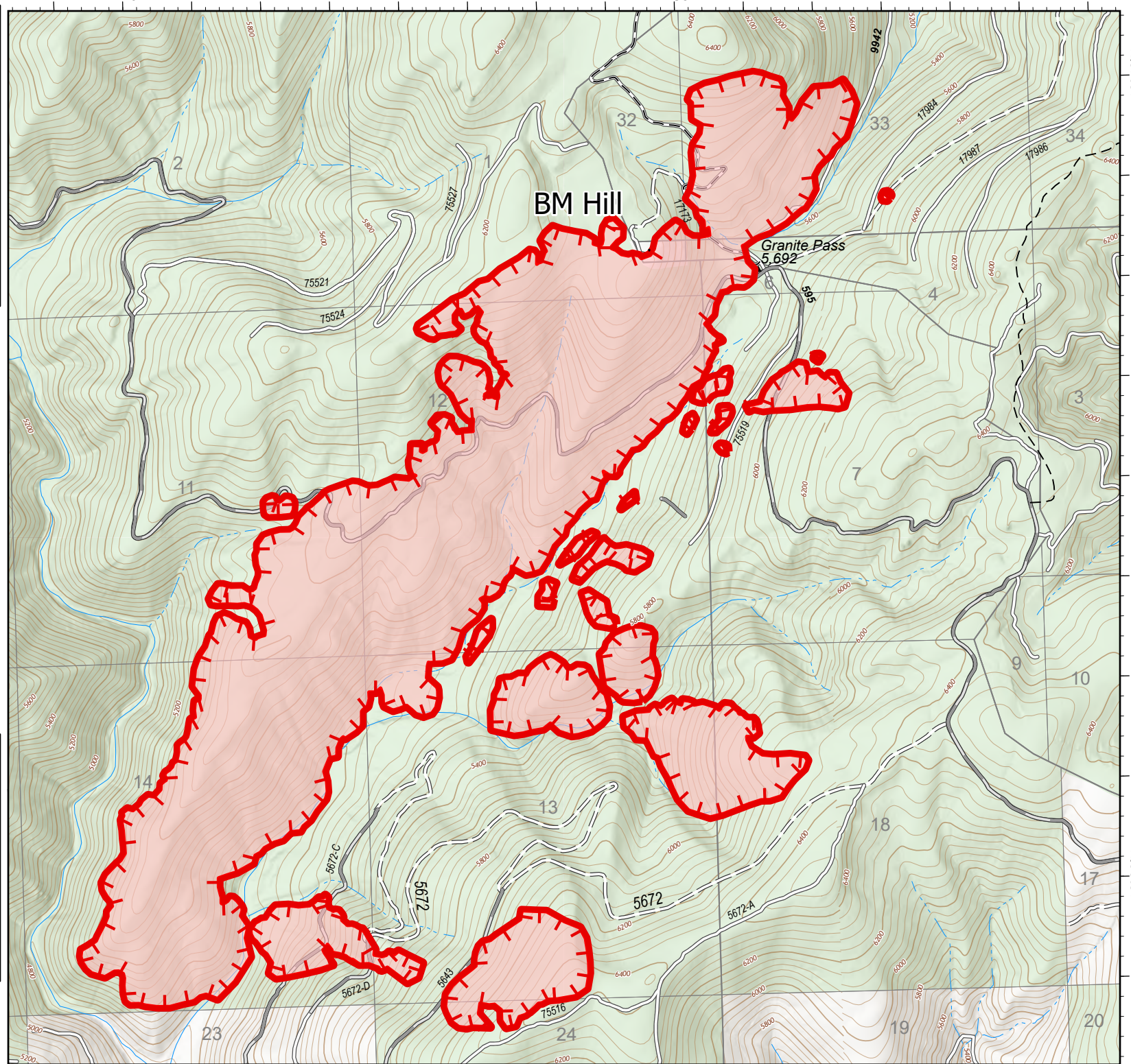
0 0.25 0.5
Miles

-  Wildfire Daily Fire Perimeter
-  Fire Edge
-  Gravel Road
-  Dirt Road
-  Unimproved Road
-  Trail
-  Forest Service Land



Page 2 of 10

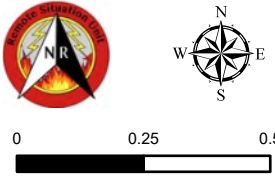
7/15/2021 0001










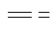
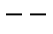

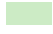
114°40'W

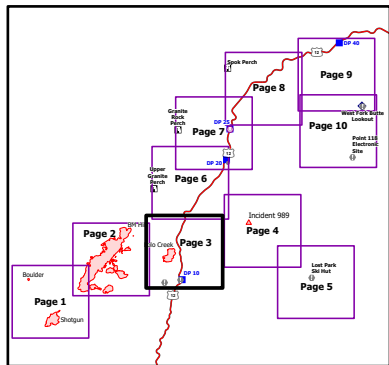
114°38'W

IAP
Granite Pass
 MT-LNF-000962
 July 16, 2021 Day
 1,438 acres at 7/14/21 11pm

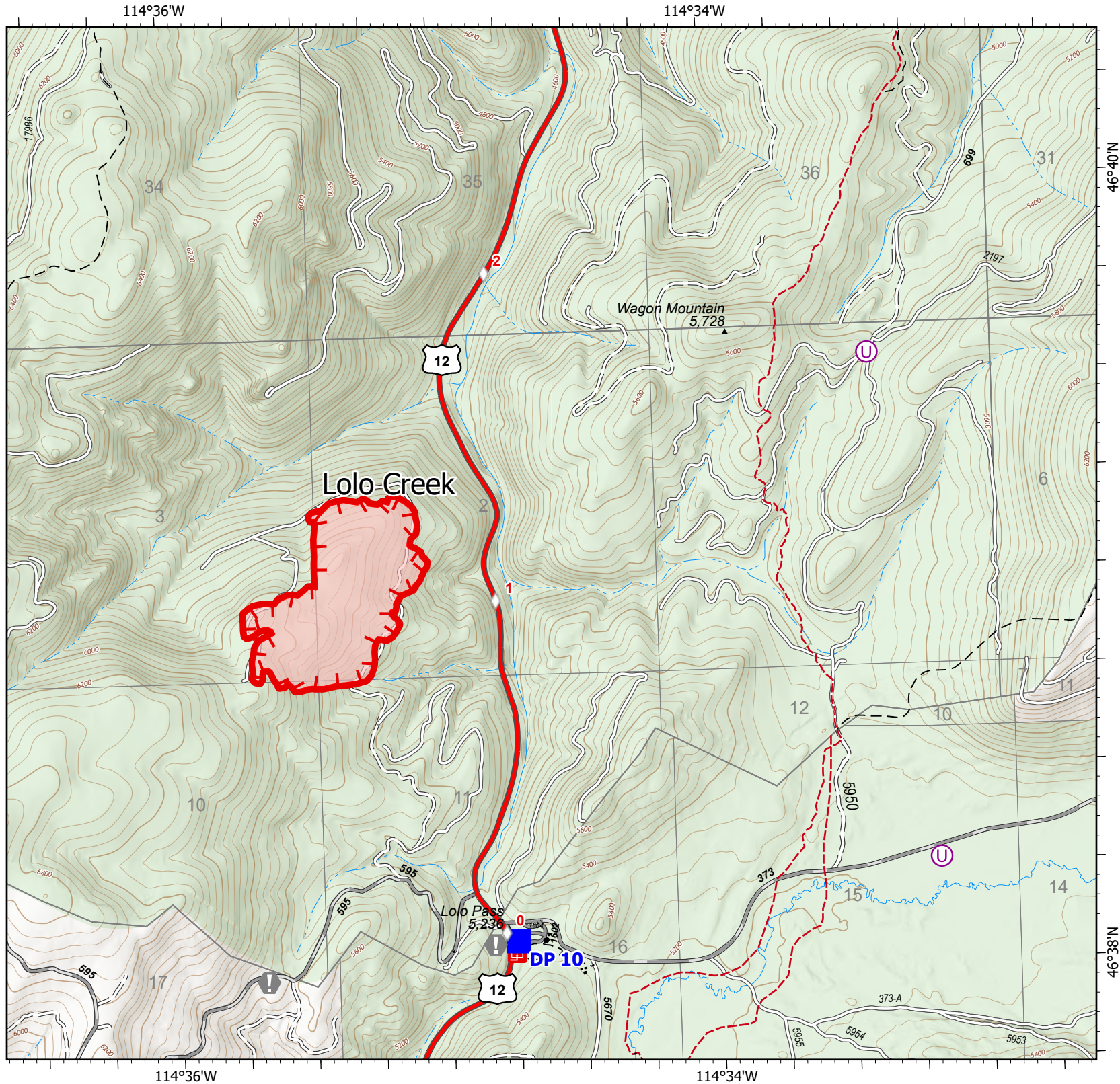


0 0.25 0.5
 Miles

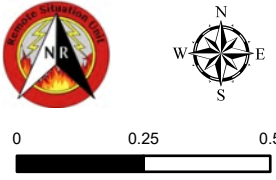
-  Wildfire Daily Fire Perimeter
-  Fire Edge
-  Drop Point
-  Value at Risk
-  Paved FS Road
-  Gravel Road
-  Dirt Road
-  Unimproved Road
-  Trail
-  National Designated Trail
-  Forest Service Land




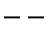
7/15/2021 0002

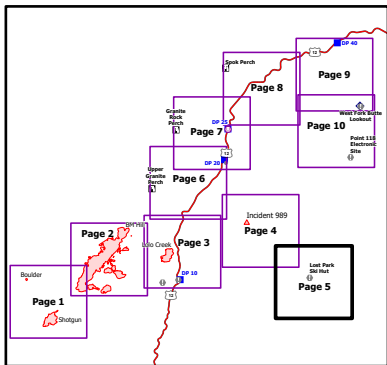


IAP
Granite Pass
 MT-LNF-000962
 July 16, 2021 Day
 1,438 acres at 7/14/21 11pm



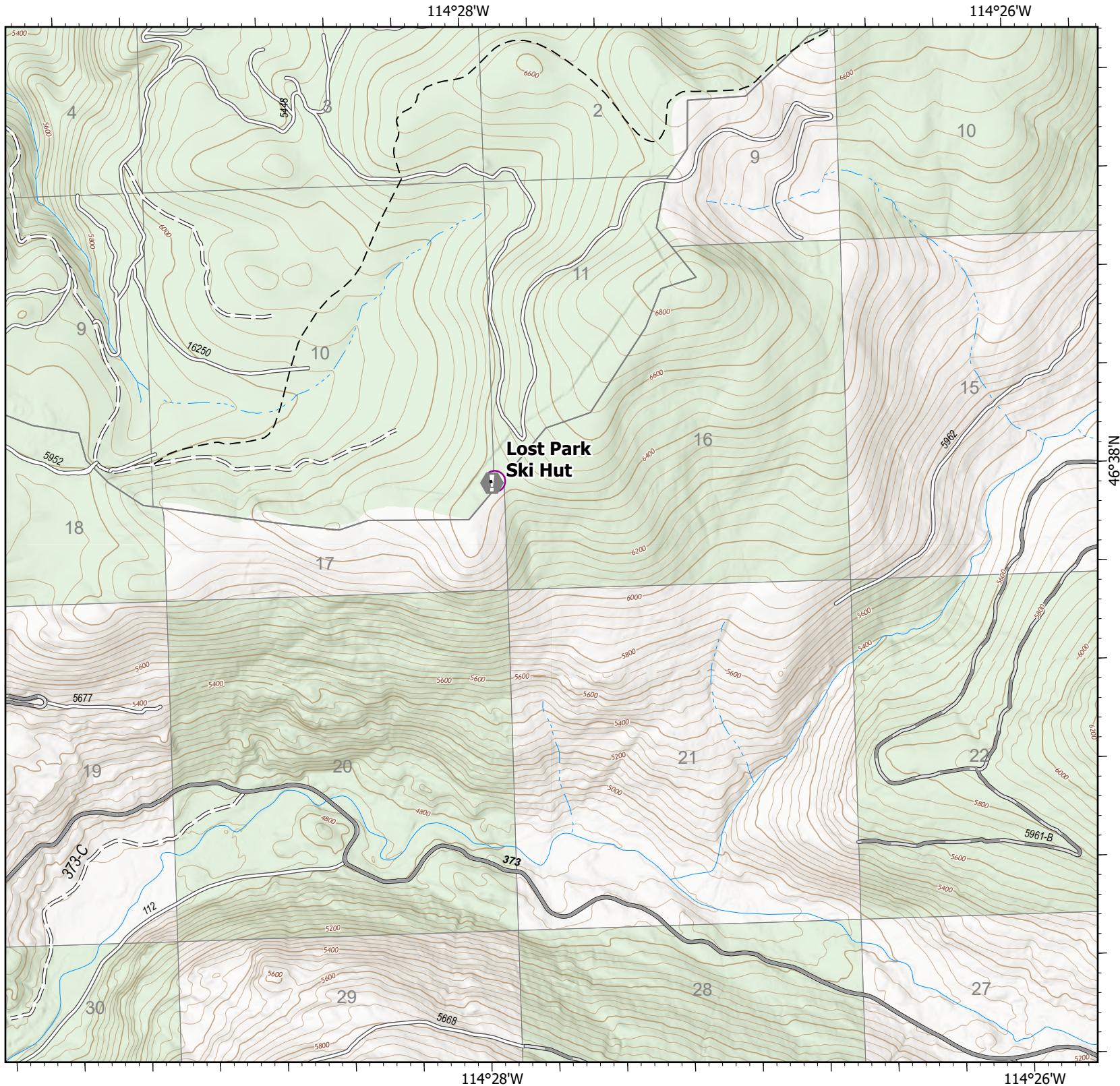
0 0.25 0.5
 Miles

-  Value at Risk
-  Gravel Road
-  Dirt Road
-  Unimproved Road
-  Trail
-  Forest Service Land



Page 5 of 10

7/15/2021 1002



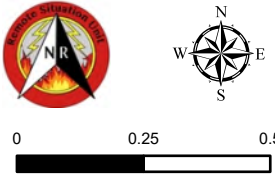
114°28'W

114°26'W








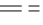
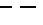

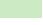
114°36.01'W

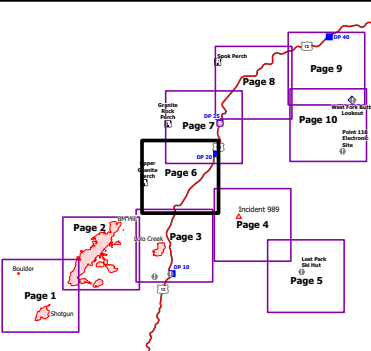
114°34'W

IAP
Granite Pass
 MT-LNF-000962
 July 16, 2021 Day
 1,438 acres at 7/14/21 11pm



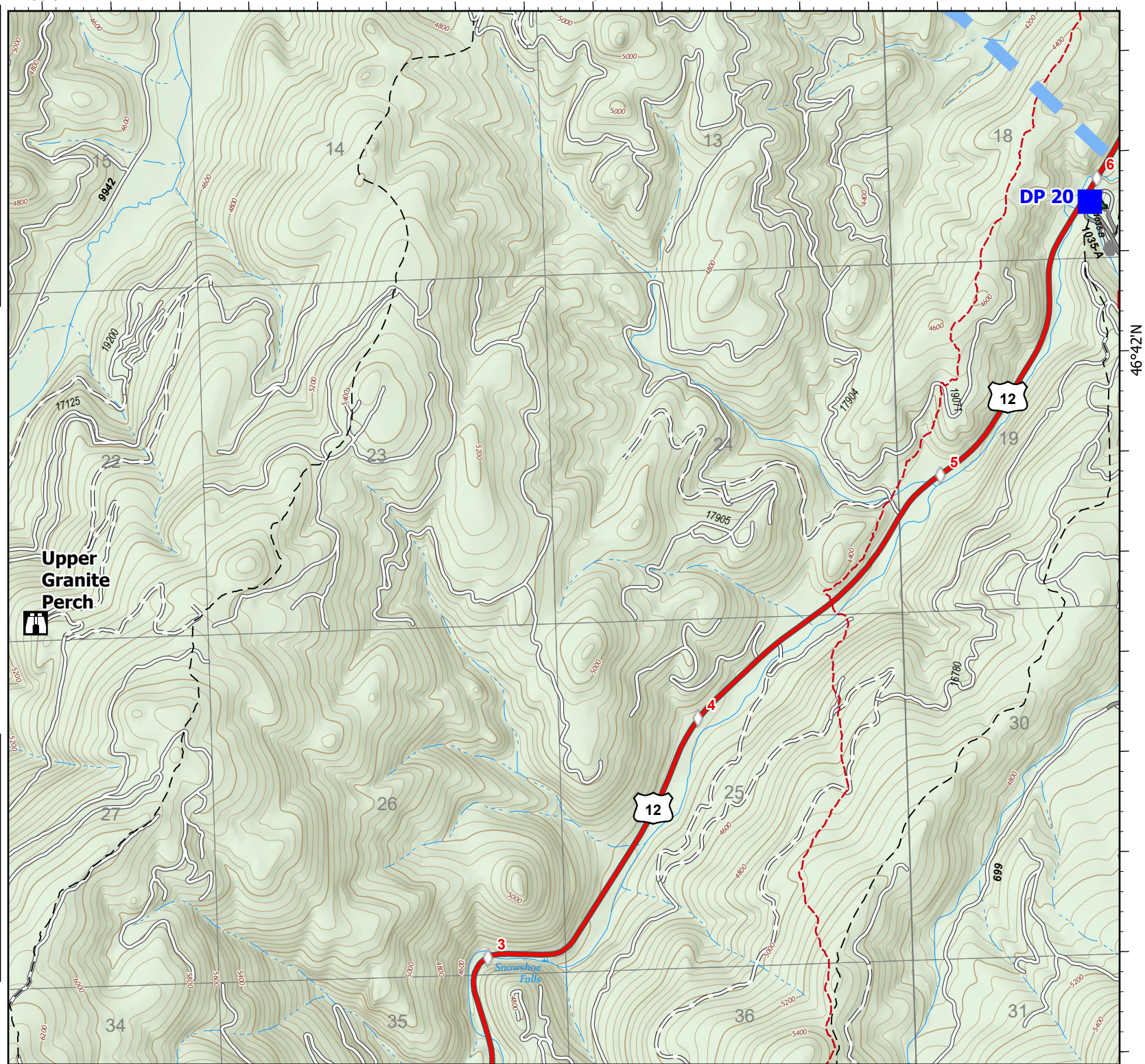
0 0.25 0.5
Miles

-  Temporary Flight Restriction
-  Drop Point
-  Lookout
-  Other
-  Paved FS Road
-  Gravel Road
-  Dirt Road
-  Unimproved Road
-  Trail
-  National Designated Trail
-  Forest Service Land



Page 6 of 10

7/15/2021 1002

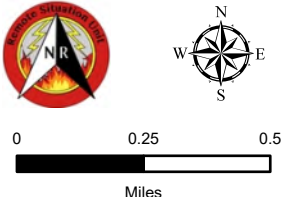


114°36.01'W



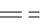

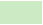
114°34'W

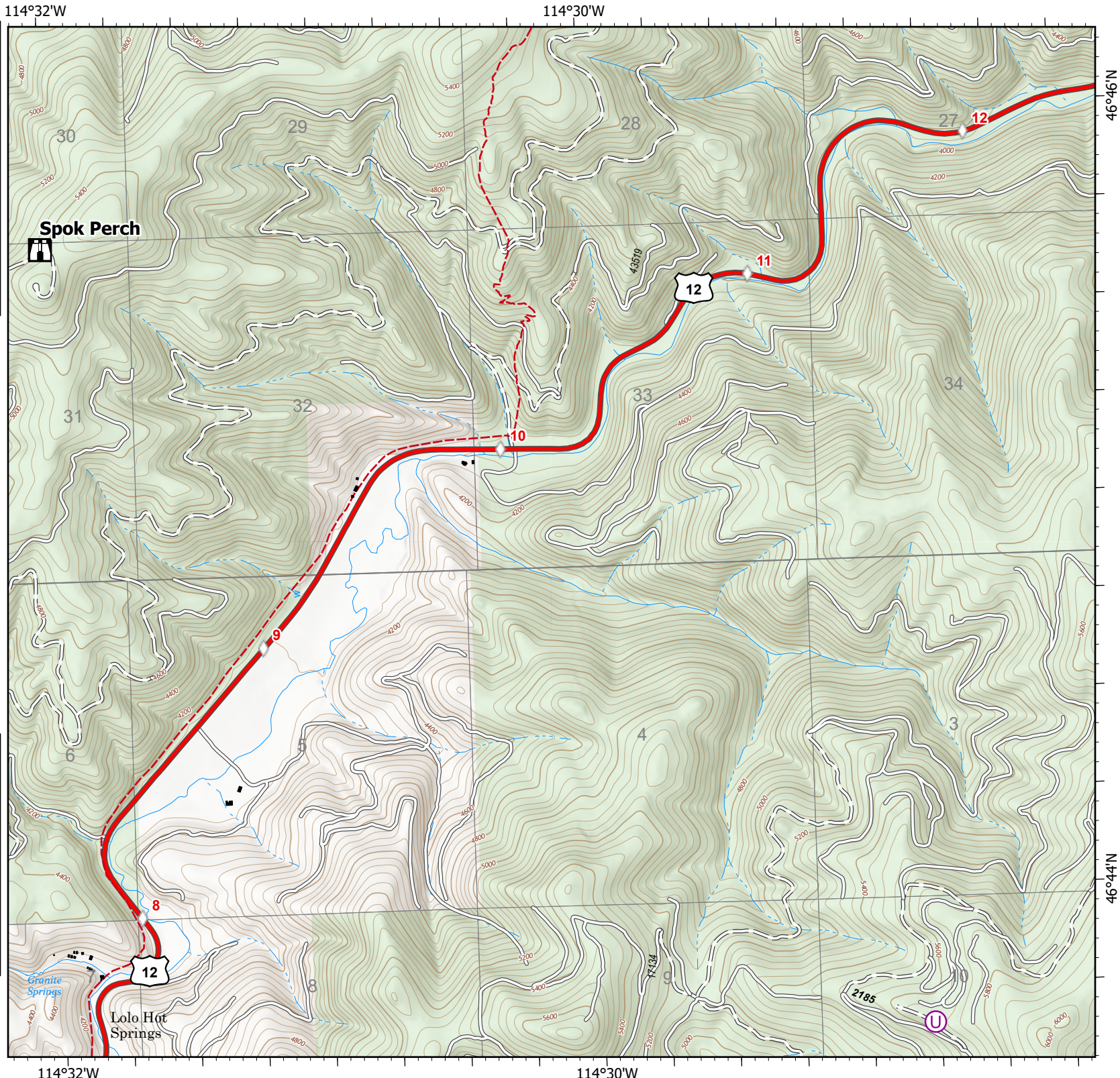
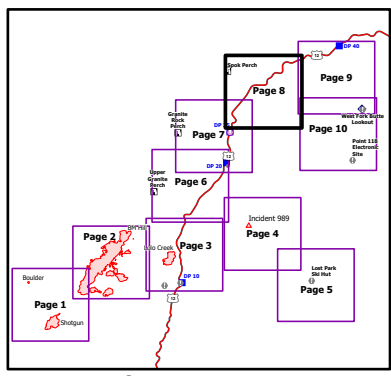
46°42'N

IAP
Granite Pass
 MT-LNF-000962
 July 16, 2021 Day
 1,438 acres at 7/14/21 11pm

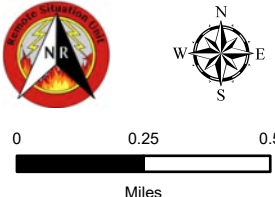


0 0.25 0.5
Miles





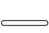
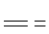
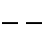

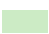
-  Lookout
-  Dirt Road
-  Unimproved Road
-  National Designated Trail
-  Forest Service Land

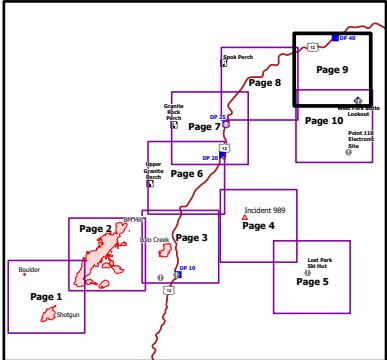


IAP
Granite Pass
 MT-LNF-000962
 July 16, 2021 Day
 1,438 acres at 7/14/21 11pm

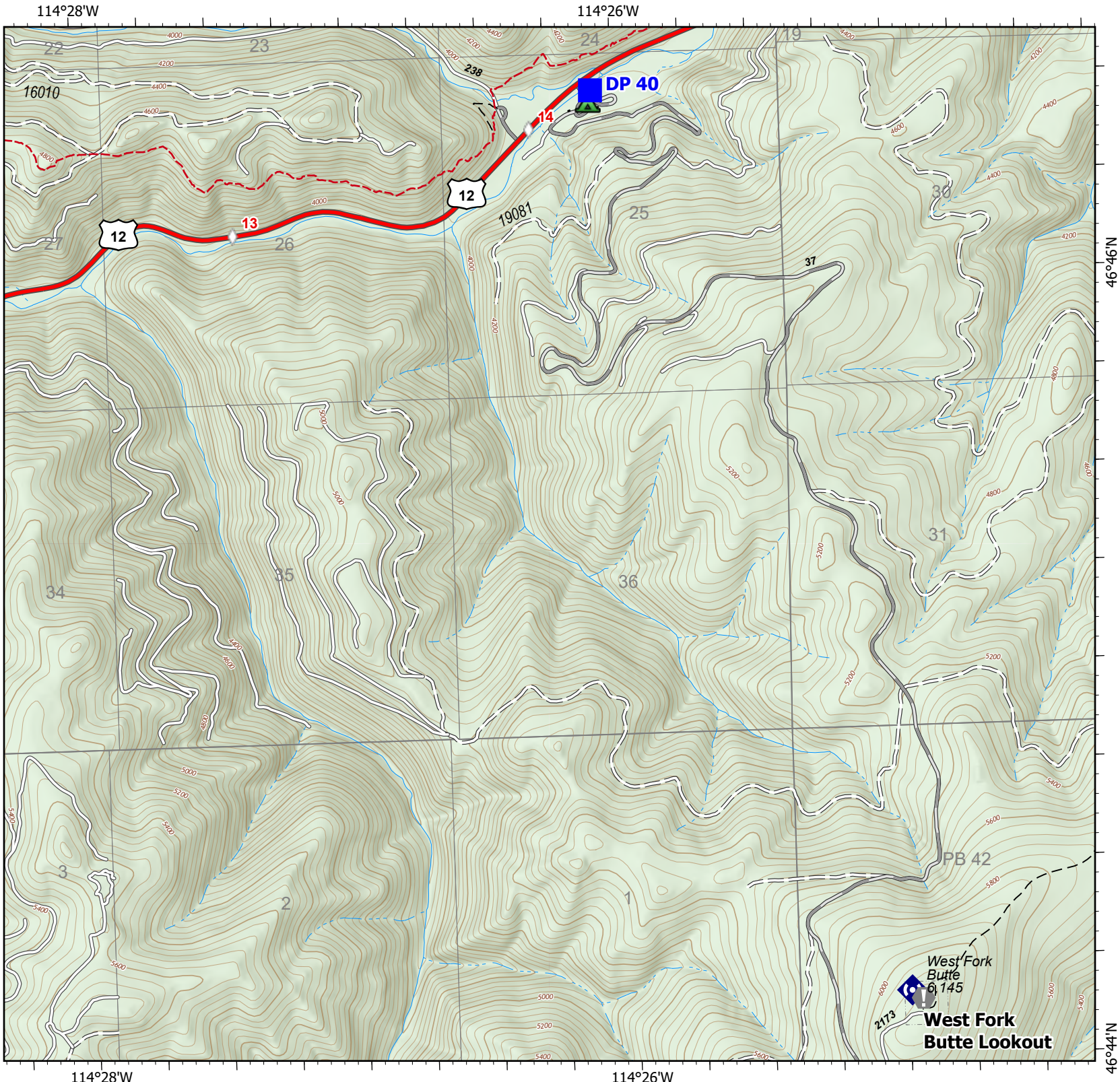


0 0.25 0.5
Miles

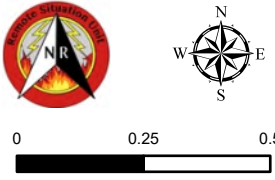
-  Drop Point
-  Value at Risk
-  Repeater
-  Gravel Road
-  Dirt Road
-  Unimproved Road
-  Trail
-  National Designated Trail
-  Forest Service Land



Page 9 of 10



IAP
Granite Pass
 MT-LNF-000962
 July 16, 2021 Day
 1,438 acres at 7/14/21 11pm



0 0.25 0.5
 Miles

-  Value at Risk
-  Repeater
-  Gravel Road
-  Dirt Road
-  Unimproved Road
-  Trail
-  Forest Service Land

