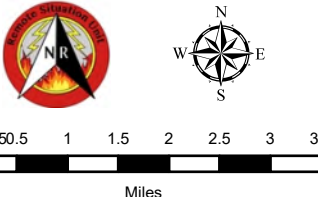












**IAP**  
**Granite Pass**  
 MT-LNF-000962  
 July 17, 2021 Day  
 1,532 acres at 7/16/21 0000

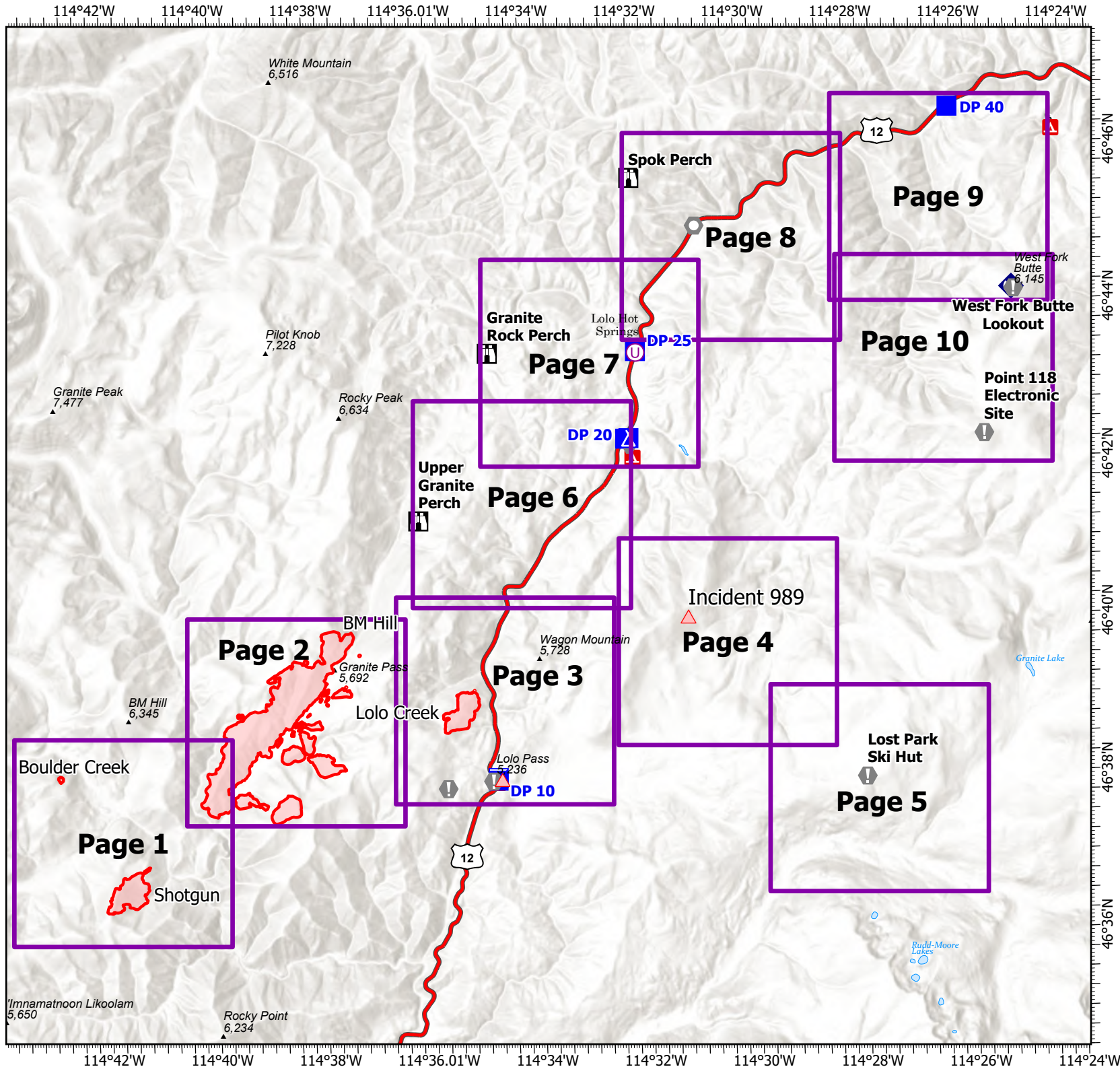


0 0.25 0.5 1 1.5 2 2.5 3 3.5  
 Miles

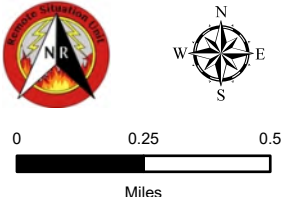
-  Wildfire Daily Fire Perimeter
-  Unimproved Landing Area
-  Incident Command Post
-  Drop Point
-  Camp
-  Lookout
-  Value at Risk
-  Other
-  Landmark
-  Repeater




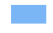



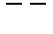
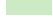
Remote Incident Support Team  
 7/16/2021 1916  
 NAD 1983 UTM Zone 11N

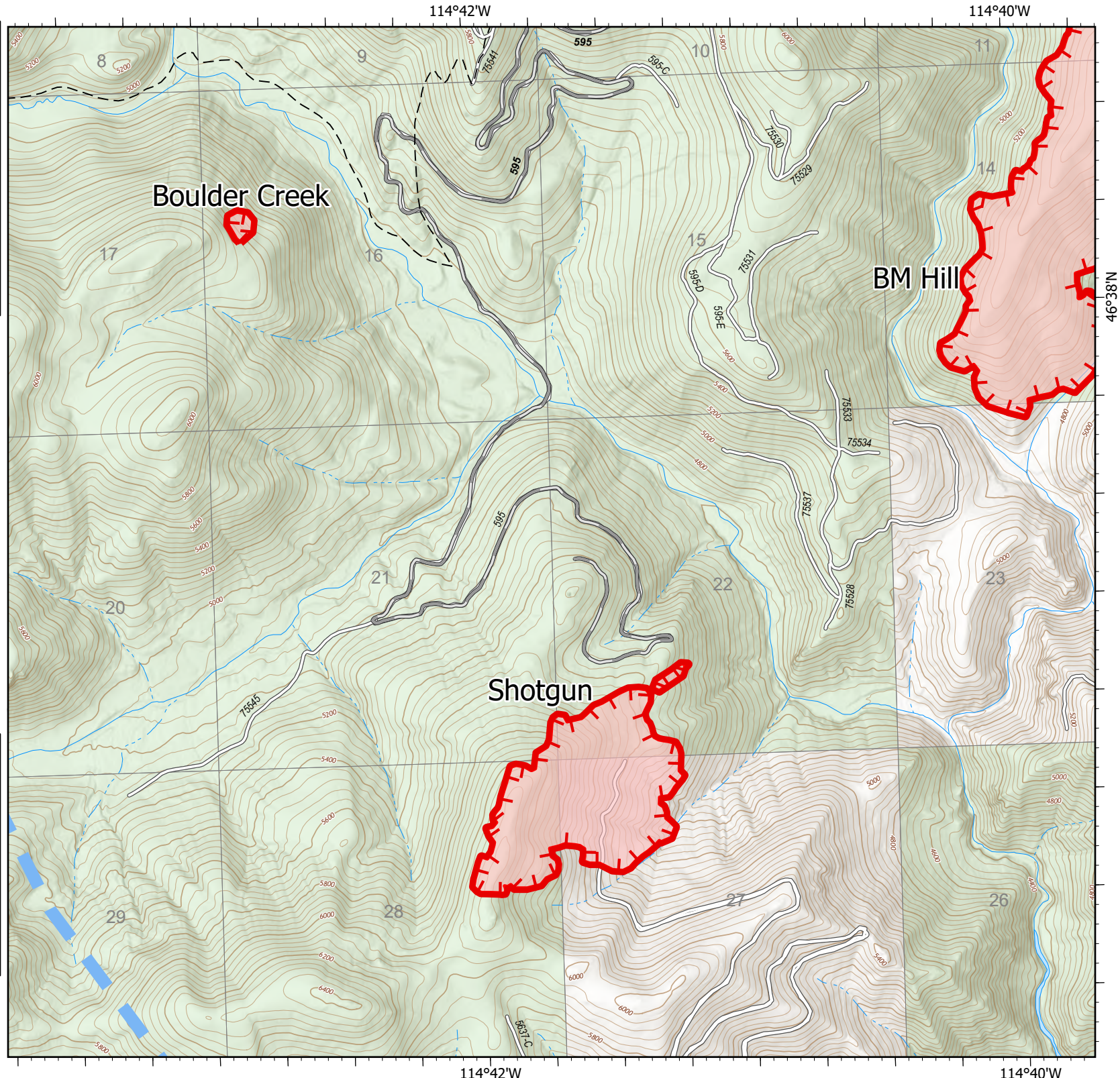
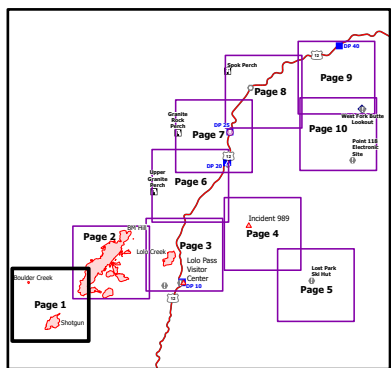


**IAP**  
**Granite Pass**  
 MT-LNF-000962  
 July 17, 2021 Day  
 1,532 acres at 7/16/21 0000



0 0.25 0.5  
 Miles

-  Wildfire Daily Fire Perimeter
-  Temporary Flight Restriction
-  Fire Edge
-  Gravel Road
-  Dirt Road
-  Trail
-  Forest Service Land



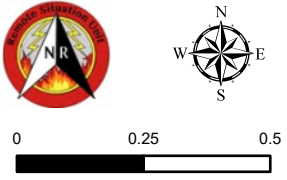
114°40'W

114°38'W




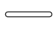
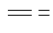
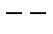
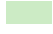
46°40'N

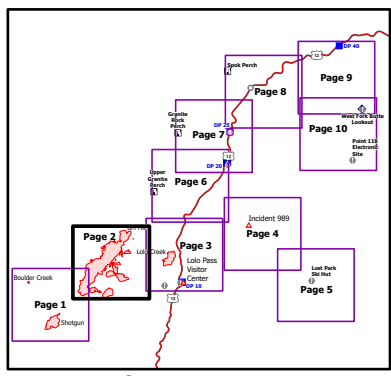
46°38'N

**IAP**  
**Granite Pass**  
 MT-LNF-000962  
 July 17, 2021 Day  
 1,532 acres at 7/16/21 0000



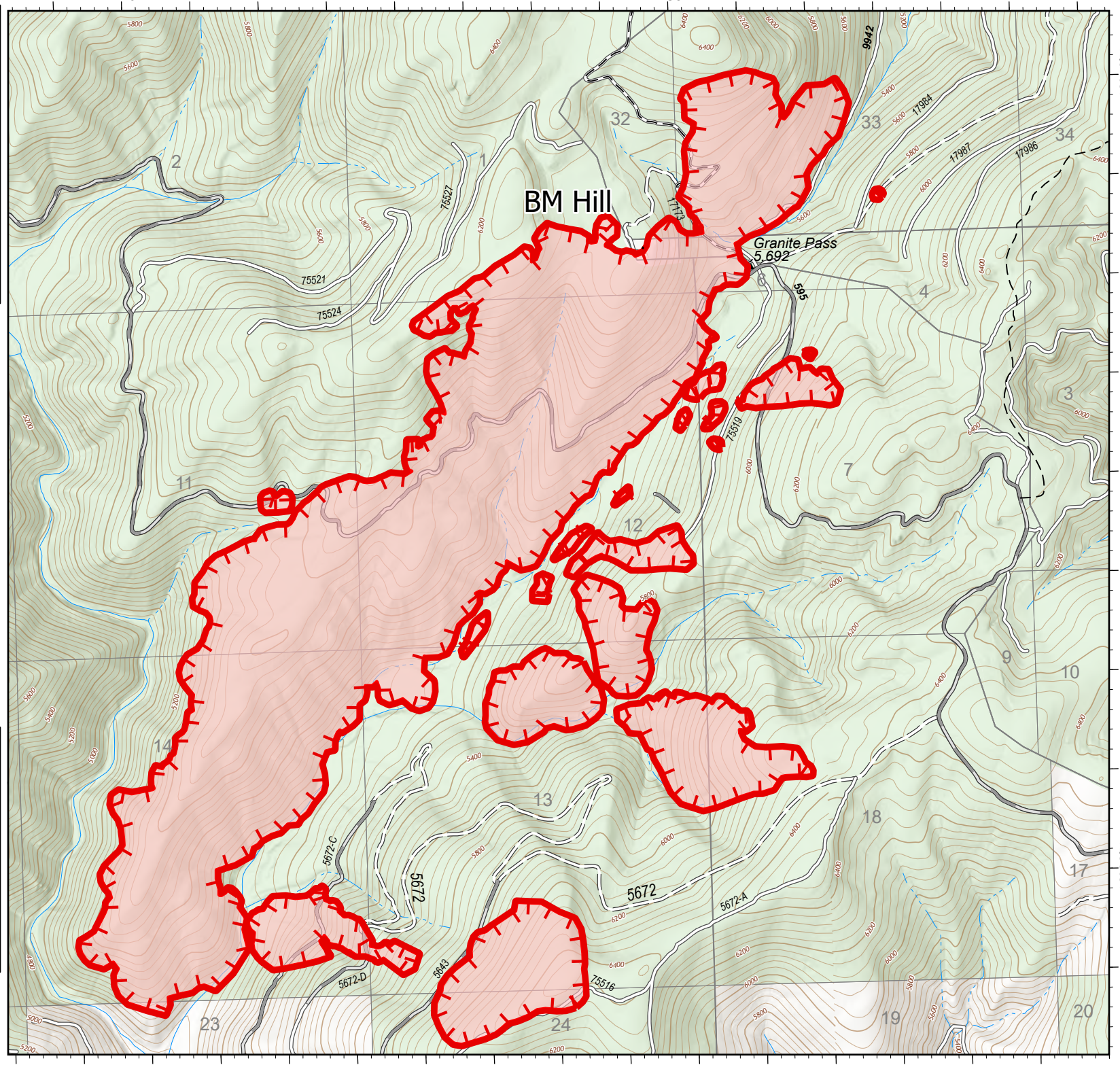
0 0.25 0.5  
Miles

-  Wildfire Daily Fire Perimeter
-  Fire Edge
-  Gravel Road
-  Dirt Road
-  Unimproved Road
-  Trail
-  Forest Service Land



Page 2 of 10

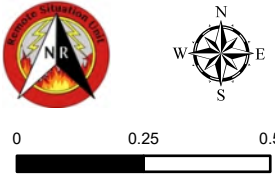
7/16/2021 1910










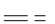
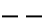

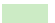
114°40'W

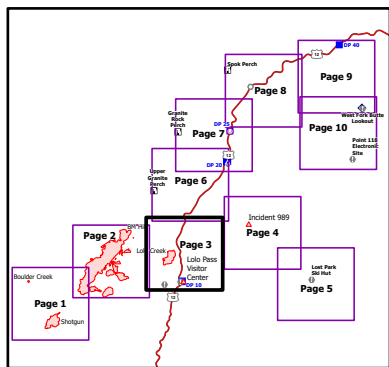
114°38'W

**IAP**  
**Granite Pass**  
 MT-LNF-000962  
 July 17, 2021 Day  
 1,532 acres at 7/16/21 0000



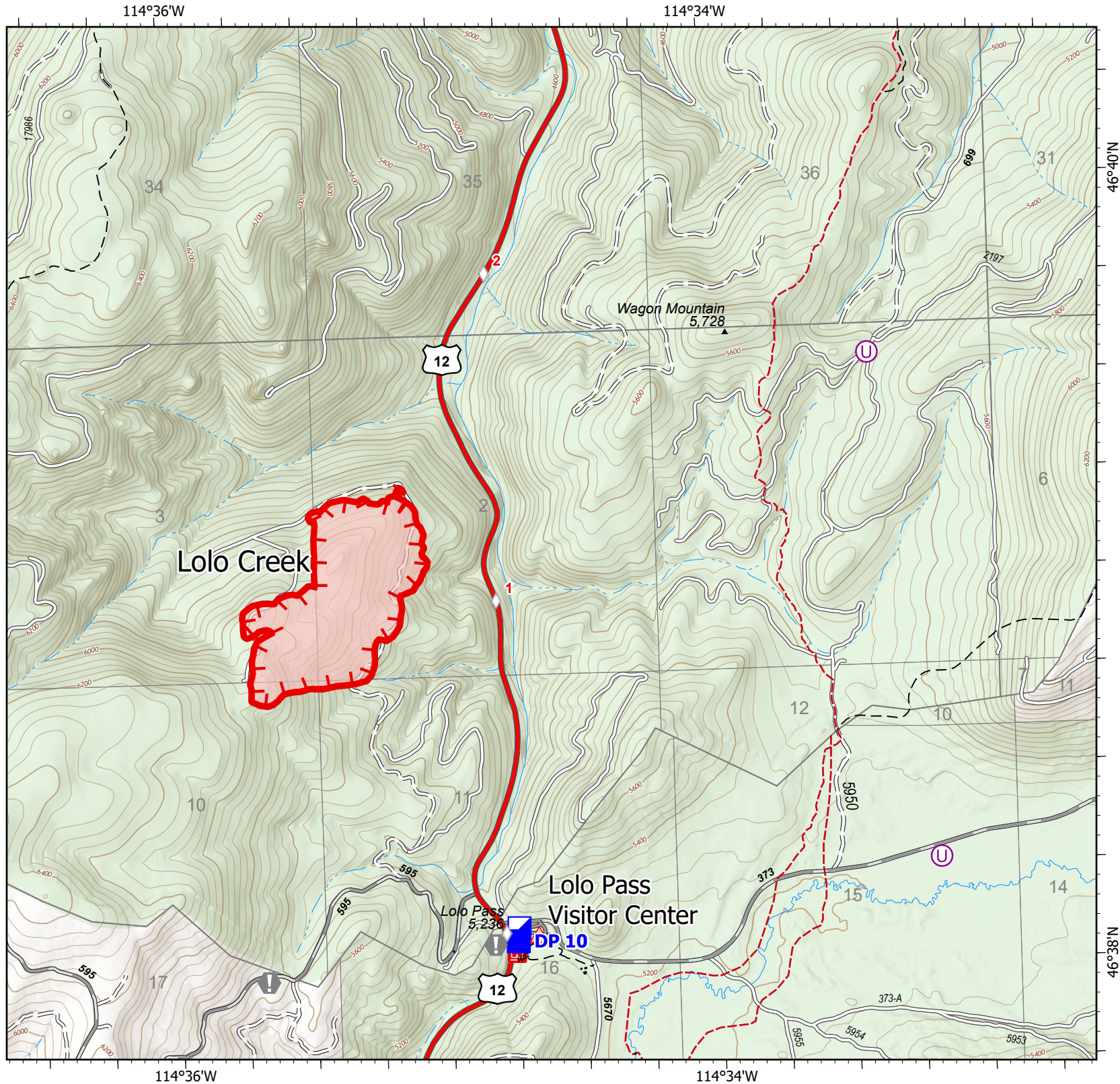
0 0.25 0.5  
 Miles

-  Wildfire Daily Fire Perimeter
-  Fire Edge
-  Incident Command Post
-  Drop Point
-  Value at Risk
-  Paved FS Road
-  Gravel Road
-  Dirt Road
-  Unimproved Road
-  Trail
-  National Designated Trail
-  Forest Service Land



Page 3 of 10


7/16/2021 1910



# IAP

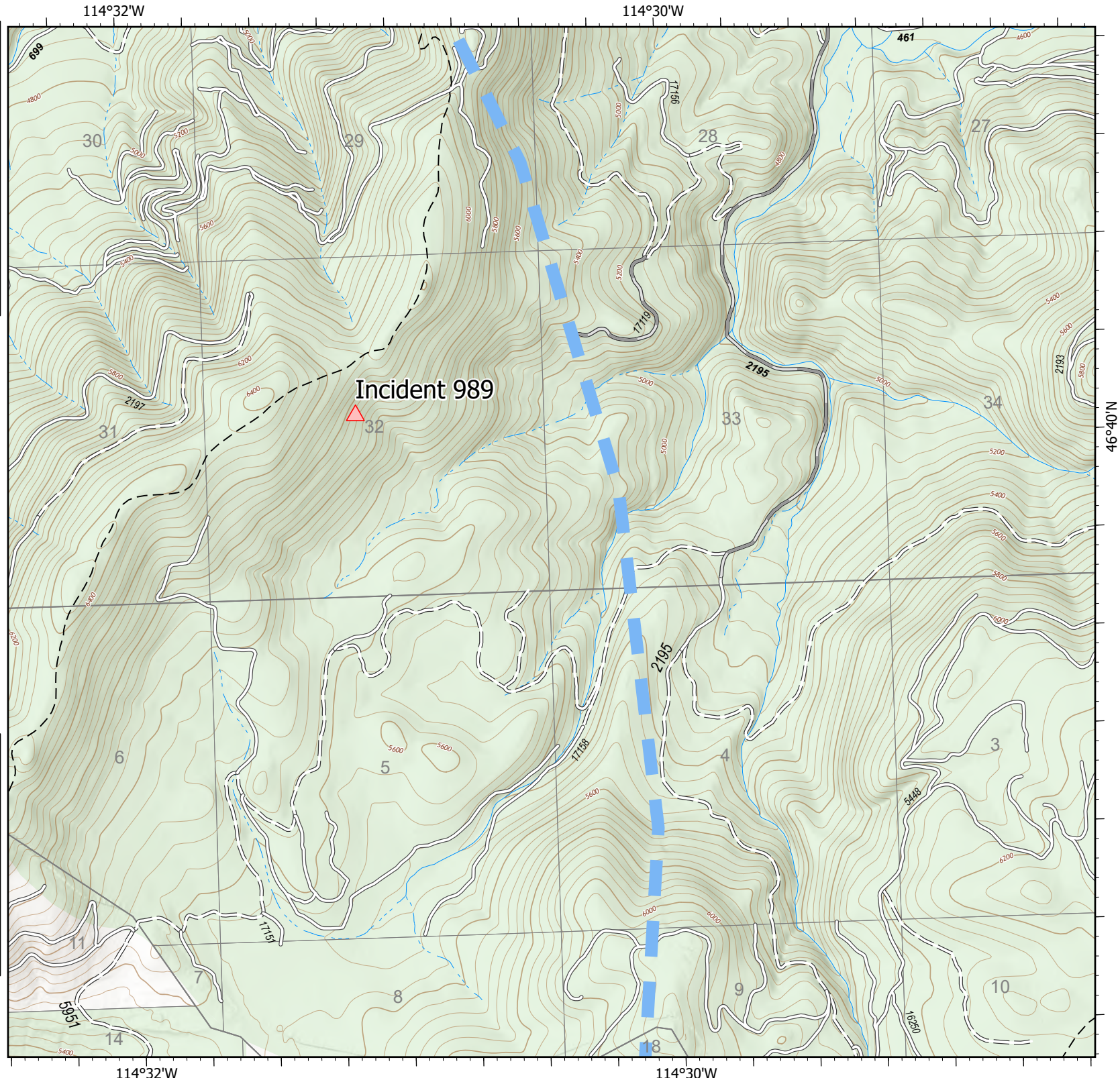
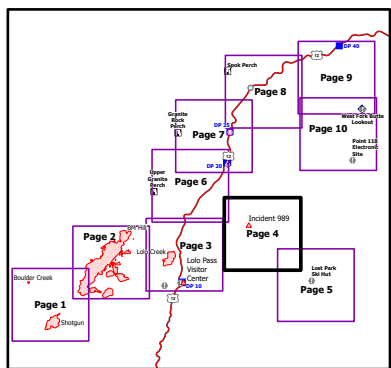
## Granite Pass

MT-LNF-000962  
July 17, 2021 Day  
1,532 acres at 7/16/21 0000



0      0.25      0.5  
Miles

- Temporary Flight Restriction
- Gravel Road
- Dirt Road
- Unimproved Road
- Trail
- Forest Service Land





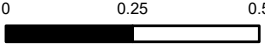
# IAP

## Granite Pass



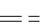
MT-LNF-000962  
July 17, 2021 Day

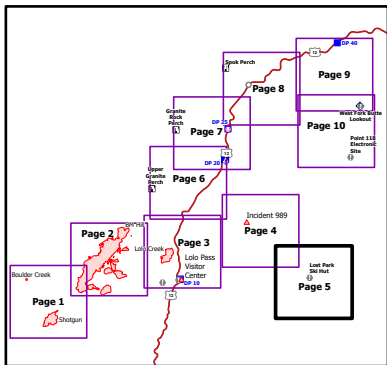
1,532 acres at 7/16/21 0000



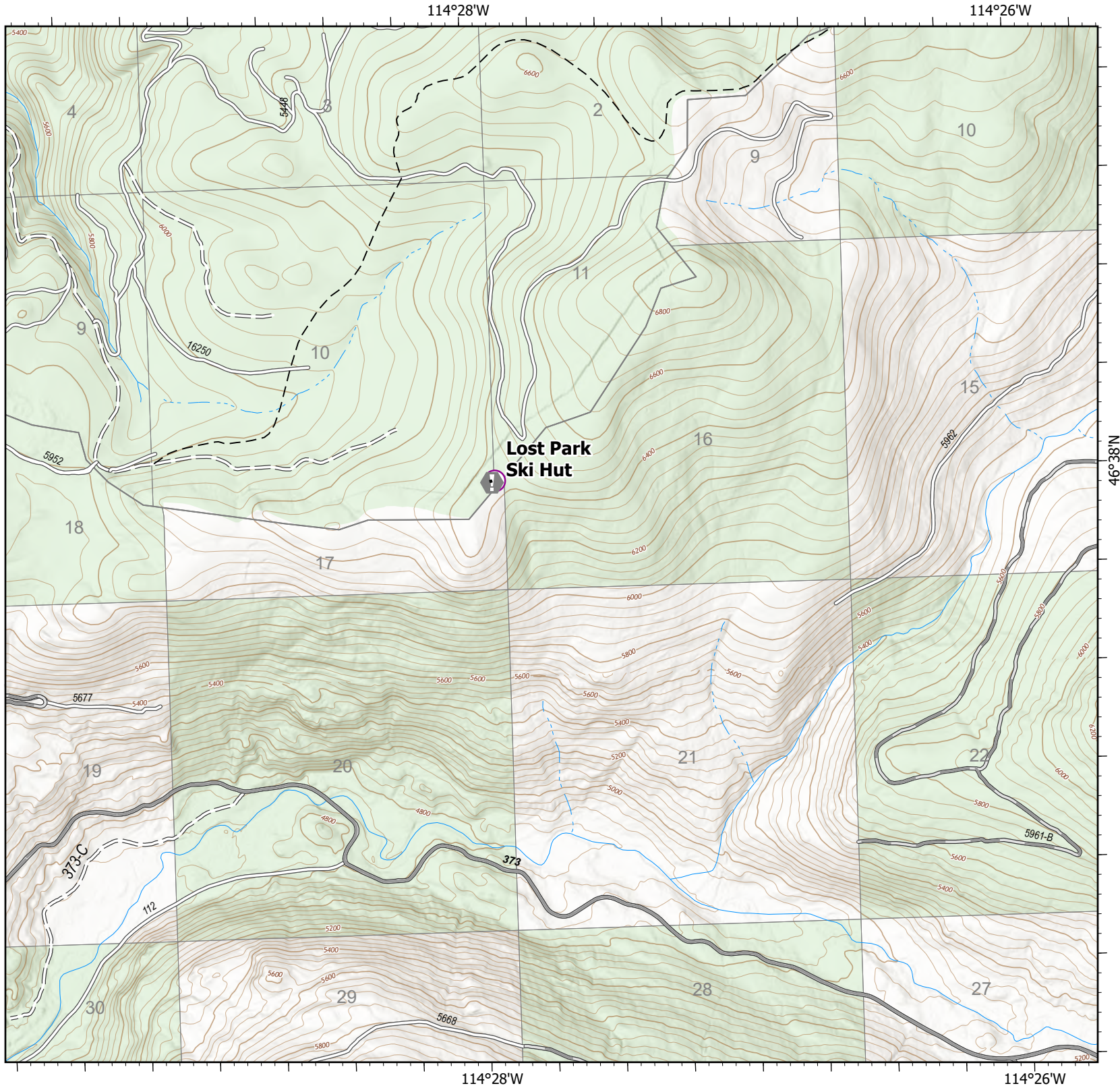
Miles

-  Value at Risk
-  Gravel Road
-  Dirt Road
-  Unimproved Road
-  Trail
-  Forest Service Land



Page 5 of 10

7/16/2021 1910



114°28'W

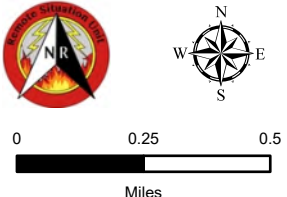
114°26'W

46°38'N

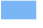







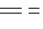
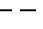

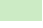
114°36.01'W

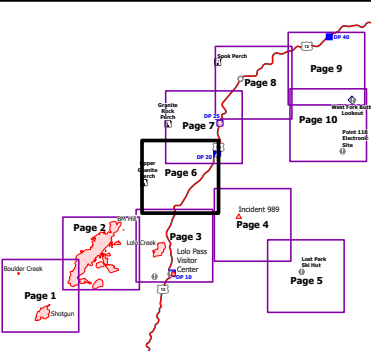
114°34'W

**IAP**  
**Granite Pass**  
 MT-LNF-000962  
 July 17, 2021 Day  
 1,532 acres at 7/16/21 0000



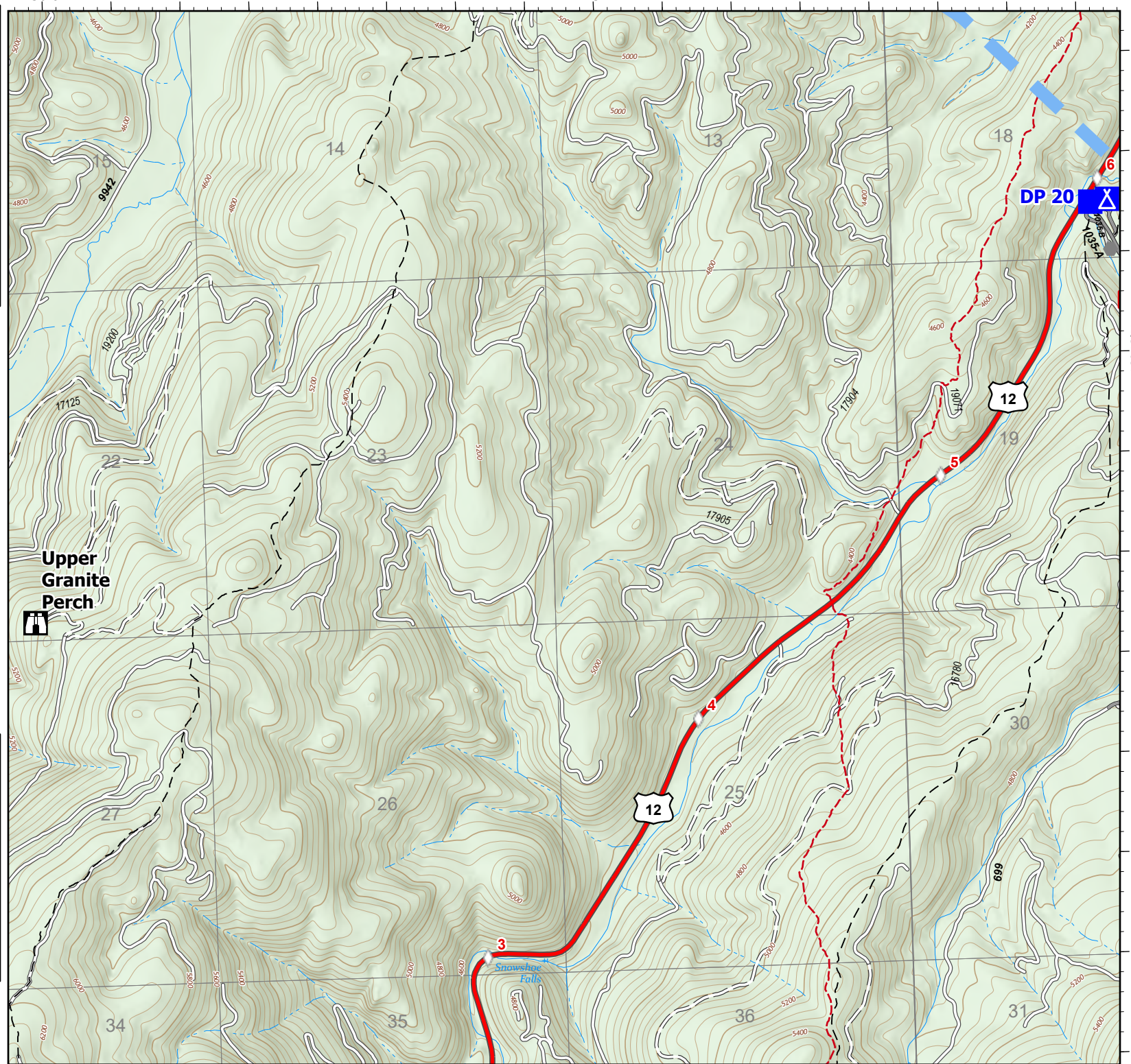
0 0.25 0.5  
Miles

-  Temporary Flight Restriction
-  Drop Point
-  Camp
-  Lookout
-  Other
-  Paved FS Road
-  Gravel Road
-  Dirt Road
-  Unimproved Road
-  Trail
-  National Designated Trail
-  Forest Service Land



Page 6 of 10

7/16/2021 1910



114°36.01'W

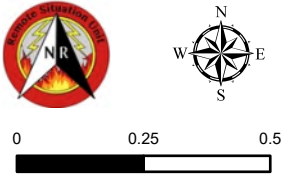
114°34'W

46°42'N








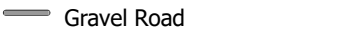

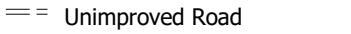



# IAP

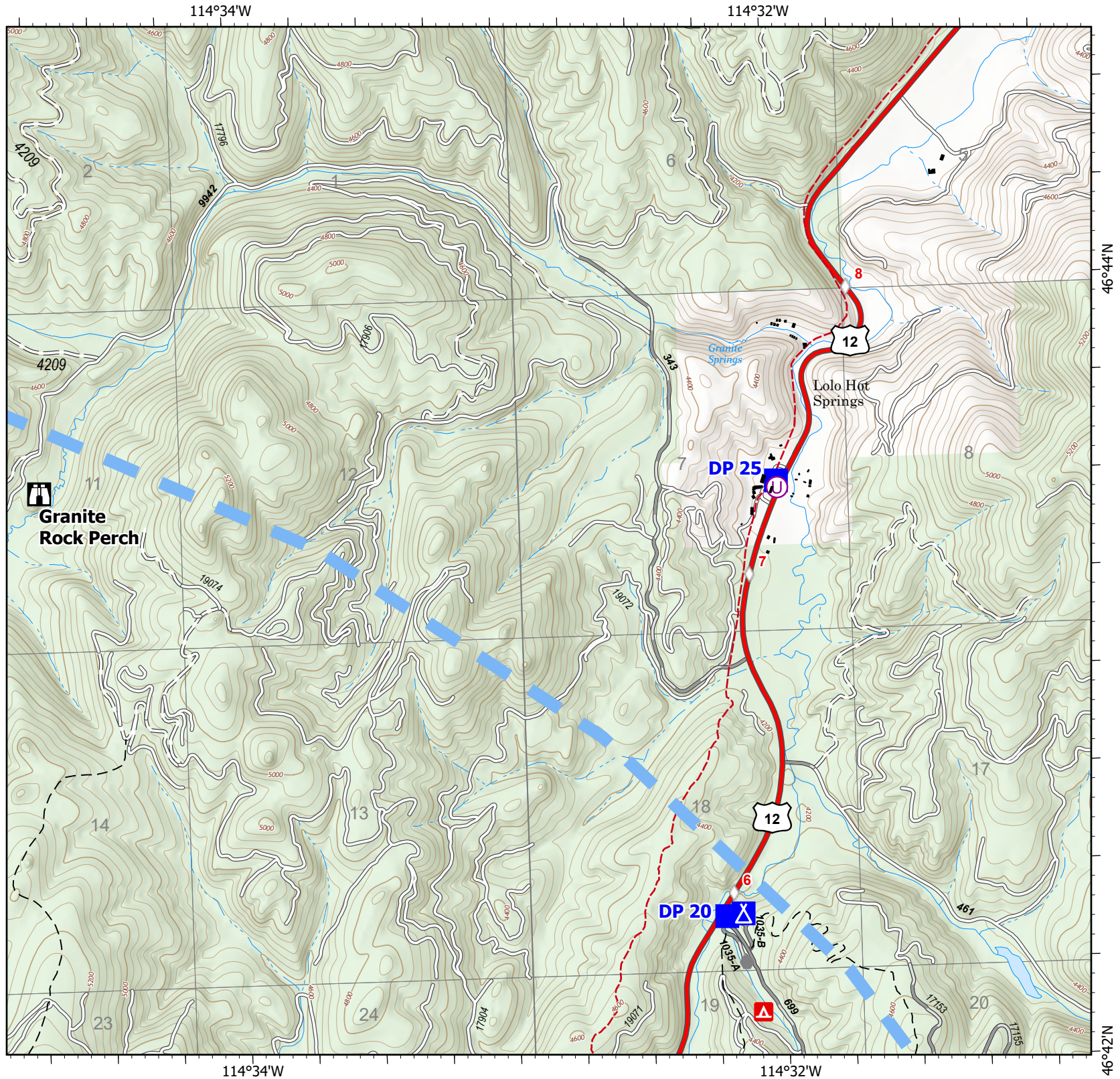
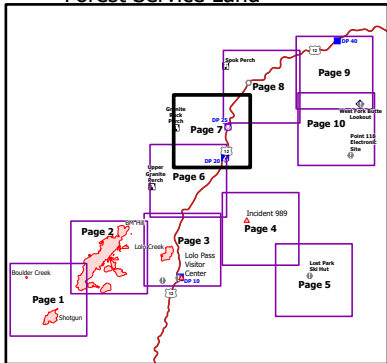
## Granite Pass

MT-LNF-000962  
July 17, 2021 Day  
1,532 acres at 7/16/21 0000



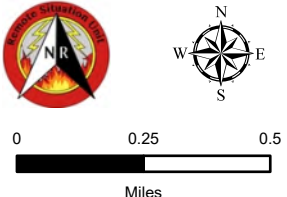
0 0.25 0.5  
Miles

-  Temporary Flight Restriction
-  Unimproved Landing Area
-  Drop Point
-  Camp
-  Lookout
-  Other
-  Paved FS Road
-  Gravel Road
-  Dirt Road
-  Unimproved Road
-  Trail
-  National Designated Trail
-  Forest Service Land




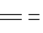

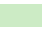


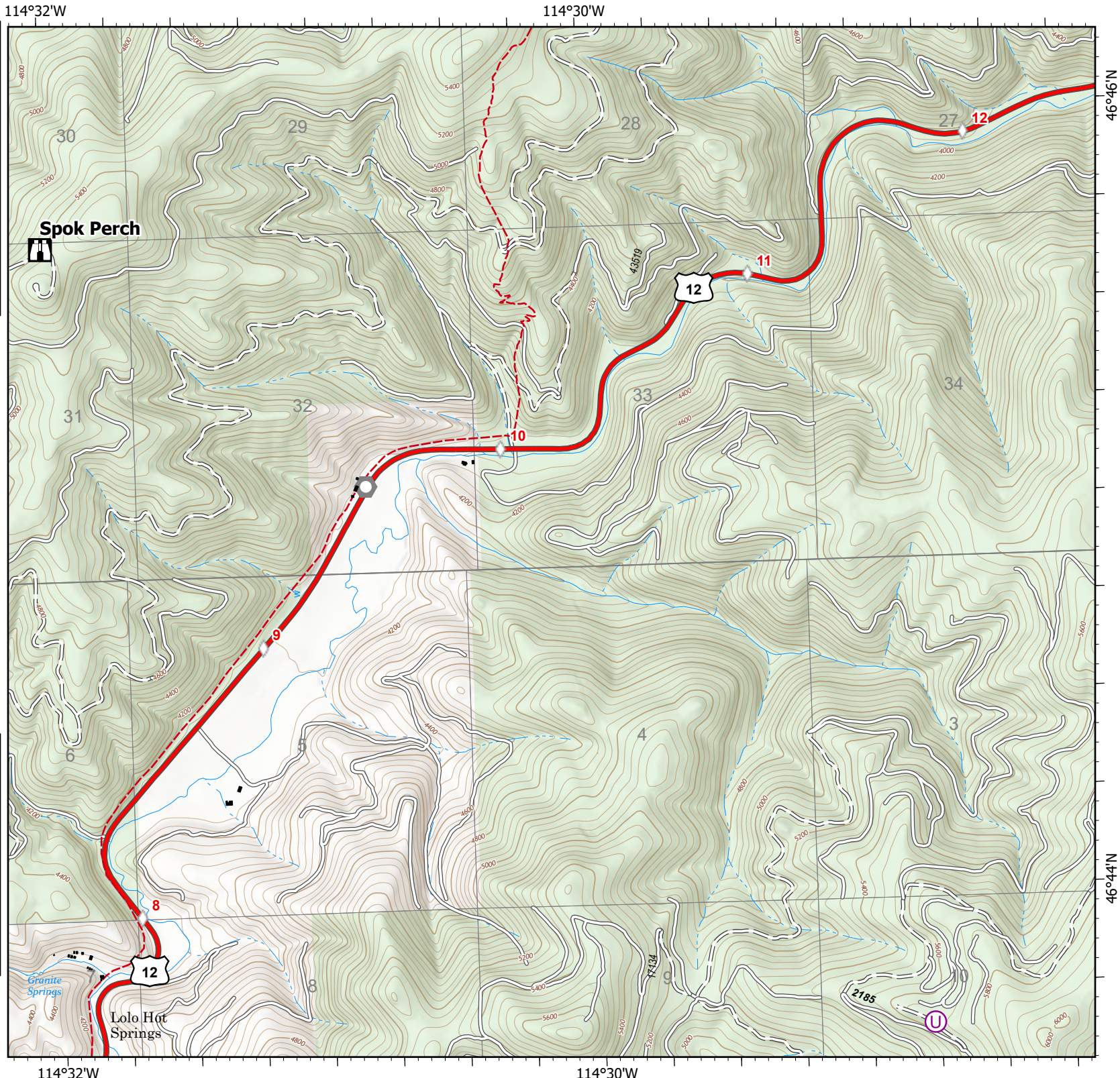
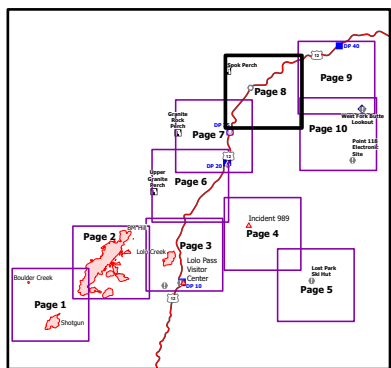


**IAP**  
**Granite Pass**  
 MT-LNF-000962  
 July 17, 2021 Day  
 1,532 acres at 7/16/21 0000



0 0.25 0.5  
Miles

-  Lookout
-  Landmark
-  Dirt Road
-  Unimproved Road
-  National Designated Trail
-  Forest Service Land

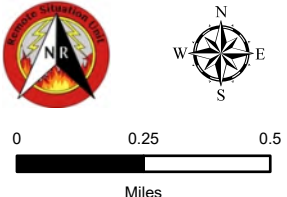


# IAP





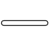
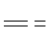
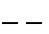

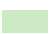
## Granite Pass

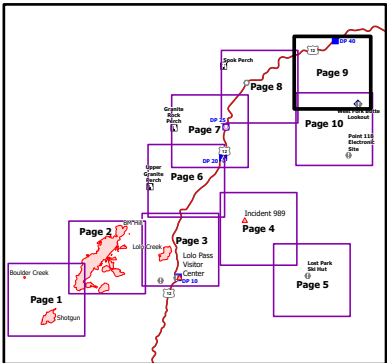
MT-LNF-000962  
July 17, 2021 Day

1,532 acres at 7/16/21 0000



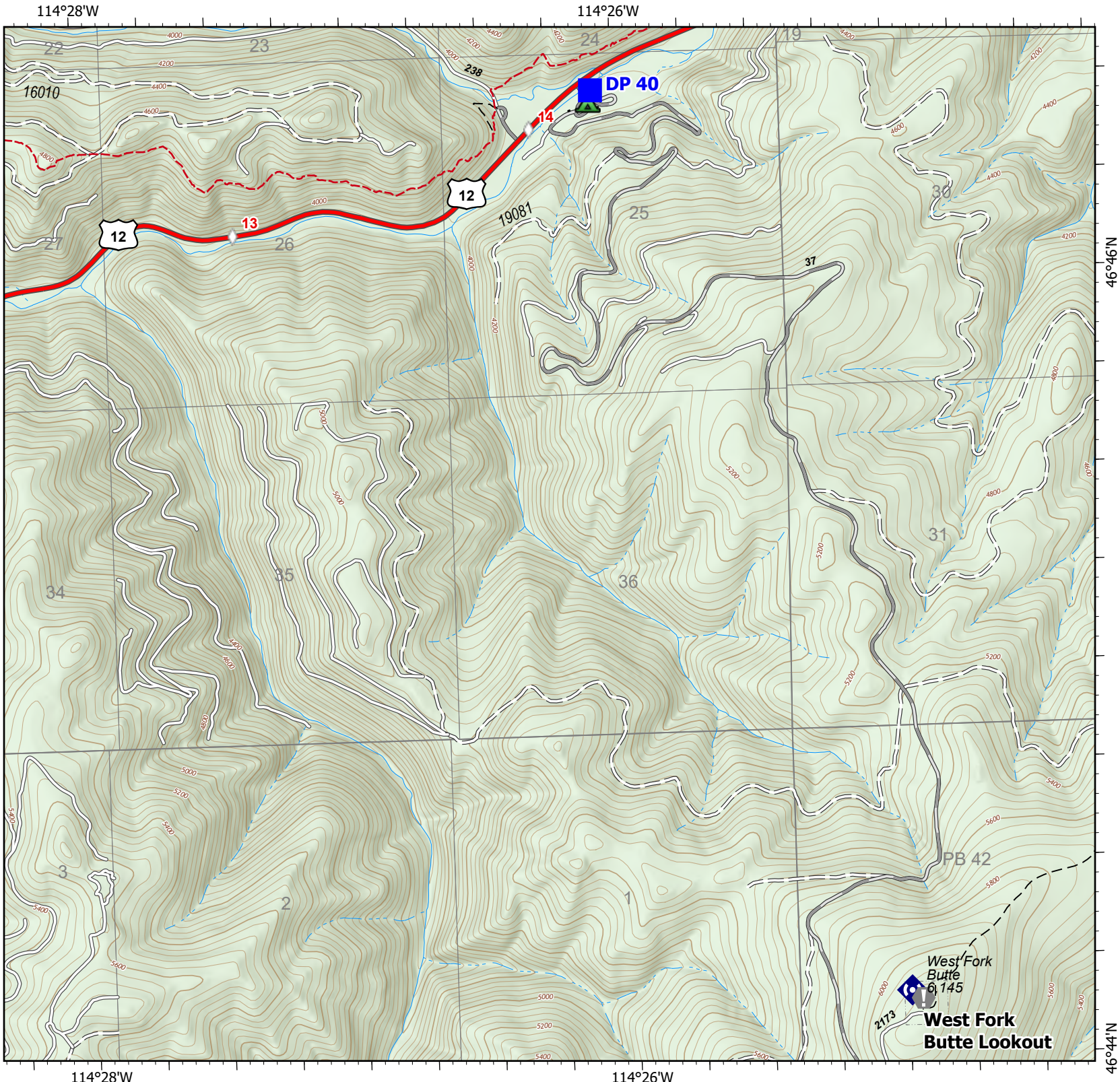
0 0.25 0.5  
Miles

-  Drop Point
-  Value at Risk
-  Repeater
-  Gravel Road
-  Dirt Road
-  Unimproved Road
-  Trail
-  National Designated Trail
-  Forest Service Land



Page 9 of 10

7/16/2021 1910



114°28'W

114°26'W

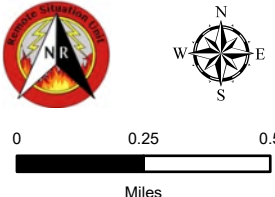
46°46'N

46°44'N

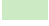
114°28'W

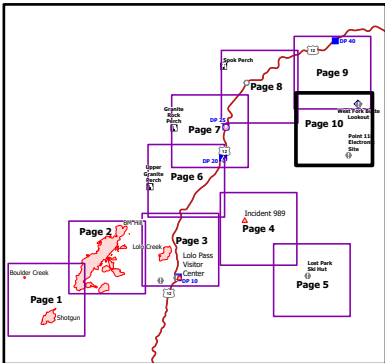
114°26'W

**IAP**  
**Granite Pass**  
 MT-LNF-000962  
 July 17, 2021 Day  
 1,532 acres at 7/16/21 0000



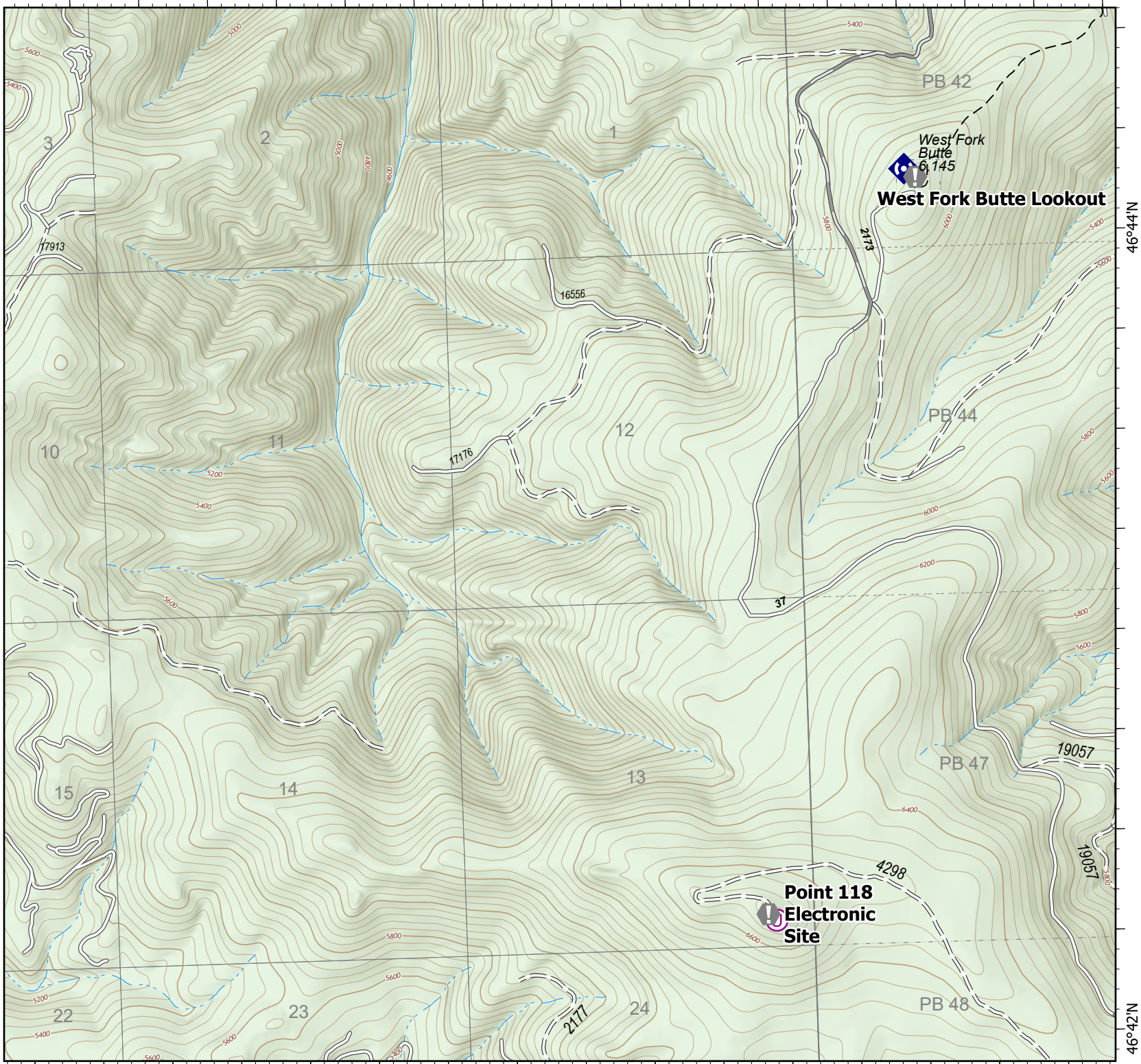
0 0.25 0.5  
 Miles

-  Value at Risk
-  Repeater
-  Gravel Road
-  Dirt Road
-  Unimproved Road
-  Trail
-  Forest Service Land



Page 10 of 10

7/16/2021 1910



114°28'W

114°26'W

46°44'N

46°42'N