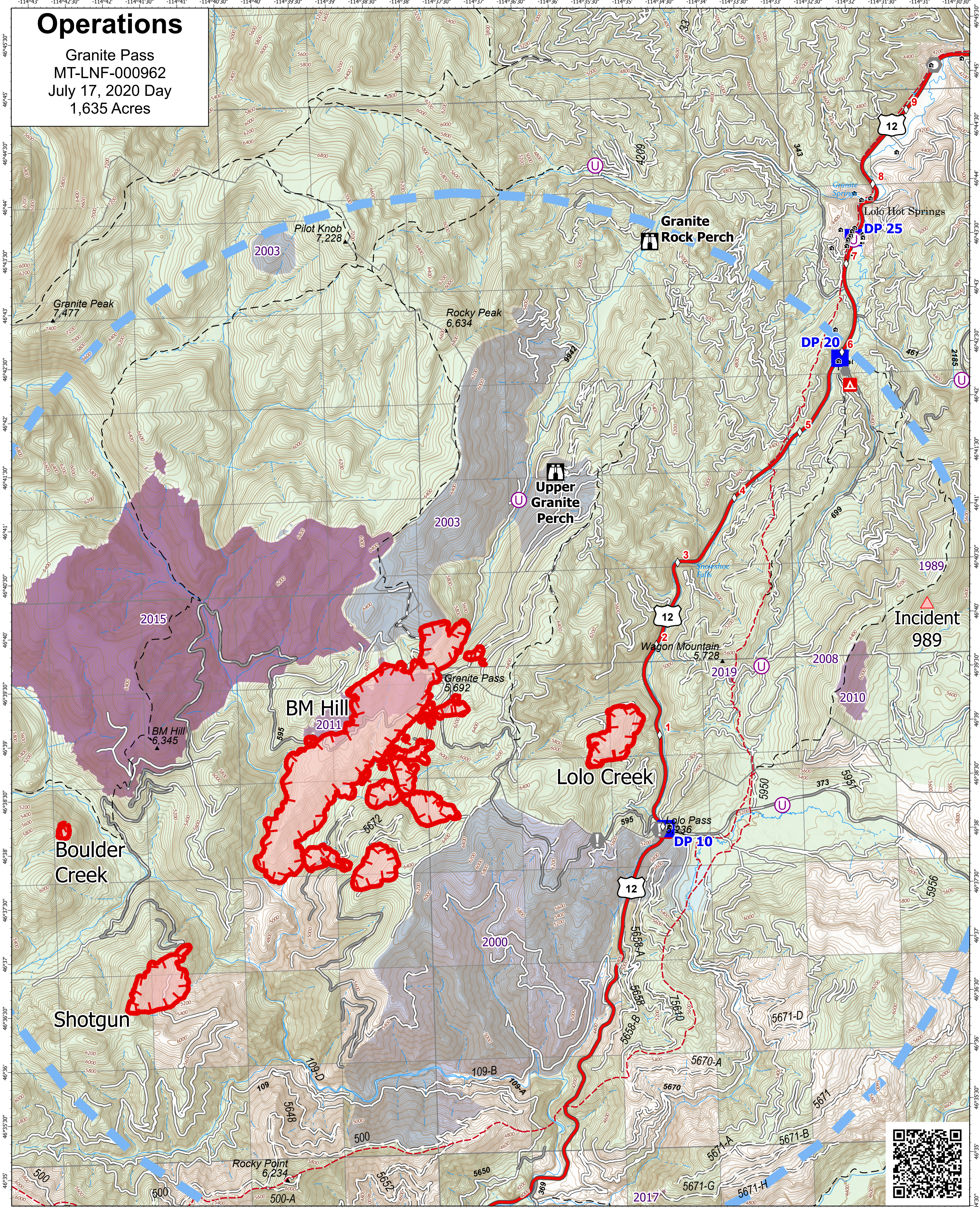


Operations

Granite Pass
 MT-LNF-000962
 July 17, 2020 Day
 1,635 Acres



- | | | | | |
|-------------------------------|---------------------|-------------------------|-------------|-------------|
| Wildfire Daily Fire Perimeter | Dirt Road | Unimproved Landing Area | Other | 2005 - 2009 |
| Temporary Flight Restriction | Unimproved Road | Drop Point | Landmark | 2010 - 2014 |
| Fire Edge | Closed FS Road | Lookout | 1985 - 1989 | 2015 - 2020 |
| Paved FS Road | Forest Service Land | Value at Risk | 2000 - 2004 | Building |
| Gravel Road | State Public Lands | | | Mile Marker |

Fire perimeter updated from Mixed Methods on 7/17/21 0145

0 0.3 0.6 0.9 1.2 Miles

1 inch equals 7 miles Scale: 1:37,500

Remote Incident Support Team
 7/17/2021 0756
 North American 1983 Datum. Lat/Long Grid

