

# PILOT

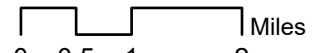
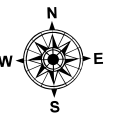
7/18/21 07:00

## Granite Pass Complex

MT-LNF-000962  
7/18/21 07:00

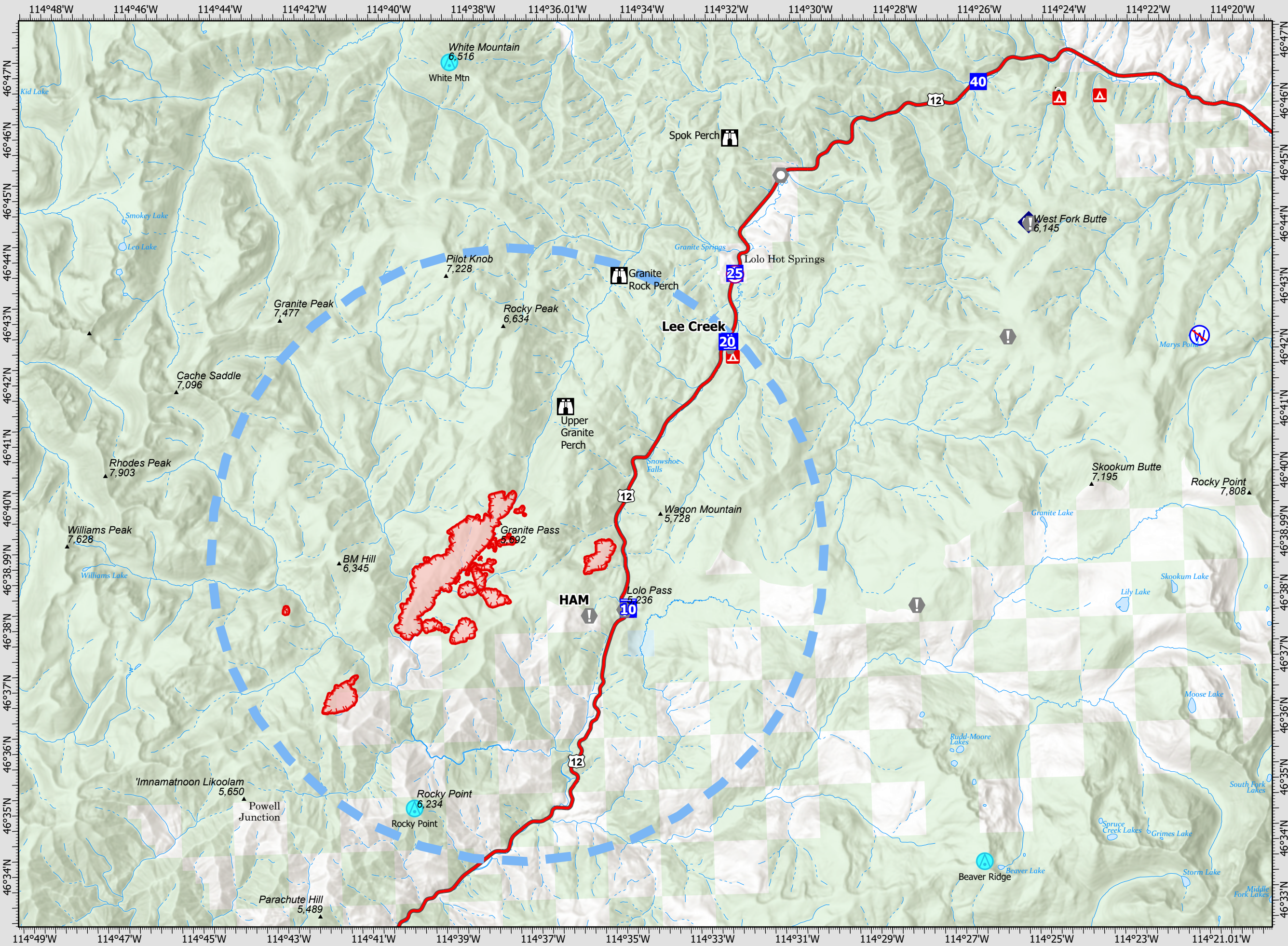
1,635 acres  
IR updated 7/17/21 01:45

- Aerial Hazard
- Unimproved Landing Area
- Incident Command Post
- Drop Point
- Camp
- Lookout
- Value at Risk
- Other
- Landmark
- Repeater
- Restricted Water Source
- Temporary Flight Restriction
- Fire Edge
- Wildfire Daily Fire Perimeter



Datum: North American 1983

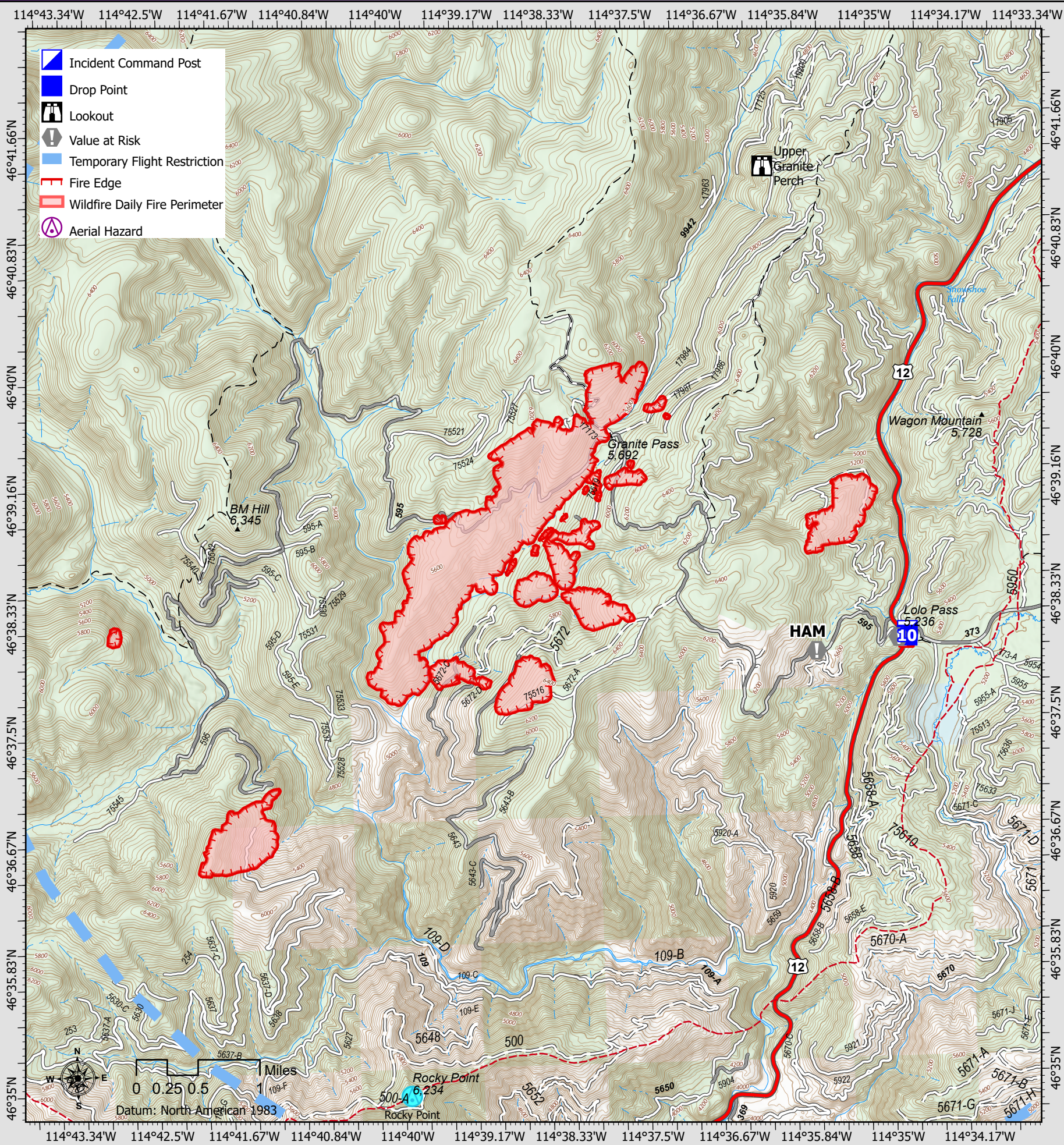
CIIMT15 GISS Updated: 7/18/2021 0118



**3. REMARKS (Safety Notes, Hazards, Air Operations Special Equipment, etc.):** Track all dipsite locations/number of dips/gallons taken. Track all drop locations/number of drops/gallons dropped. All GPS data to be collected in DEGREES, DECIMAL MINUTES format.  
**AVOID** Aerial Application of Retardant/Foam/Agent within 300' of Waterways, Bodies of Water, etc.  
 If Retardant/Foam/Agent is dropped within these areas immediately notify the AOB and provide the following information: Lat/Long, estimated number of gallons and a map detailing the area.  
 Idaho water on Idaho parts of fires  
 MT water on MT parts of fires Clean and dry buckets to prevent cross contamination  
**Avoid Mary's Frog Pond Lat 46 42.232N X 114 21.039W**  
**Fly with Transponder 1255.**

7. FREQUENCIES	TX	TO	RX	TO	AM/FM
AIR TO GROUND Pri	171.0250		171.0250		FM
AIR TO GROUND Sec	171.8250		171.8250		FM
A/A ROTOR VIC	118.1500		118.1500		AM
					AM
AIR TACTICS	166.5000	127.3	166.5000	127.3	FM
DECK					FM
A/G Tan Medical	155.3400	156.7	155.3400		FM
AIR GUARD	168.6250	110.9 (1)	168.6250	110.9 (1)	FM

8. MEDIVAC SHIP INFORMATION	
Day:	Night:
2 Bear Air 24 hr hoist	
Whitefish, MT	
Life Flight Air Amb 24 hr,	
Missoula, MT	
Alert Air Amb 24 hr,	
Kalispell, MT	
Grand Canyon Short Haul	
West Lolo Complex	



Point Type	Point Name	Comments	Latitude	Longitude
Aerial Hazard	Beaver Ridge Lookout	Repeater Site	46° 33.790' N	114° 26.522' W
Aerial Hazard	Rocky Point	Repeater Site	46° 34.937' N	114° 39.944' W
Aerial Hazard	White Mountain	Repeater Site	46° 47.062' N	114° 38.597' W
Camp	Lee Creek Camp		46° 42.381' N	114° 32.159' W
Drop Point	DP-10	Lolo Pass Visitor Center	46° 38.075' N	114° 34.755' W
Drop Point	DP-20	Lee Creek Campground	46° 42.375' N	114° 32.220' W
Drop Point	DP-25	Lolo Hot Springs	46° 43.487' N	114° 31.988' W
Drop Point	DP-40	Earl Tenant	46° 46.481' N	114° 26.077' W
Incident Command Post	Lolo Pass	Helispot Available	46° 38.108' N	114° 34.751' W
Lookout	Granite Rock Perch		46° 43.509' N	114° 34.731' W
Lookout	Spok Perch		46° 45.692' N	114° 32.011' W
Lookout	Upper Granite Perch		46° 41.404' N	114° 36.093' W
Repeater	Repeater		46° 44.166' N	114° 24.992' W
Restricted Water Source	Mary's Frog Pond	NO DIP	46° 42.232' N	114° 21.039' W
Value at Risk	Granite Rock Perch		46° 43.509' N	114° 34.731' W
Value at Risk	HAM Radio site	Structure Wrapped	46° 37.989' N	114° 35.682' W
Value at Risk	Lost Park Ski Hut		46° 37.995' N	114° 27.932' W
Value at Risk	Point 118 Electronic Site		46° 42.316' N	114° 25.572' W
Value at Risk	Snotel	Structure Wrapped	46° 38.068' N	114° 34.840' W
Value at Risk	Spok Perch		46° 45.692' N	114° 32.011' W
Value at Risk	Upper Granite Perch		46° 41.404' N	114° 36.093' W
Value at Risk	West Fork Butte Lookout	Call Lolo NF recreation for info.	46° 44.145' N	114° 24.952' W

