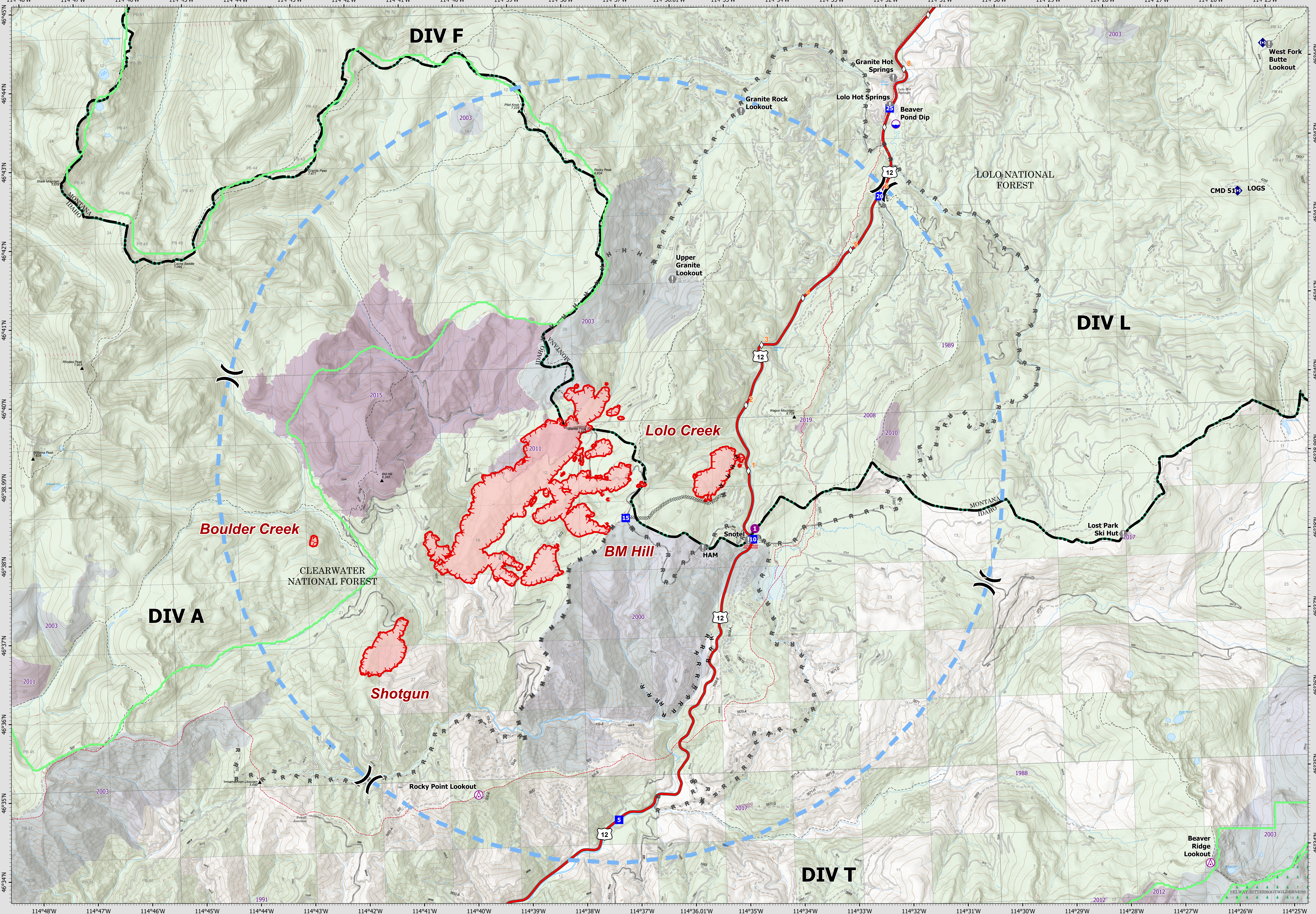


7/22/21 07:00



OPERATIONS

Granite Pass Complex

MT-LNF-000962
7/22/21 07:00

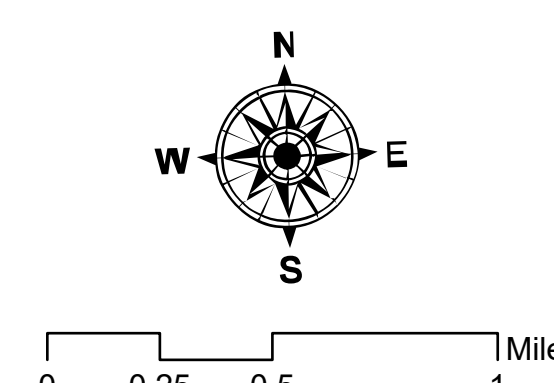
2,241 acres
IR updated 7/21/21 00:15

- ▬ Wildfire Daily Fire Perimeter
- ▬ Completed Dozer Line
- ⊞ Completed Hand Line
- ⊞ Completed Road as Line
- ⊞ Planned Hand Line
- ⊞ Planned Mixed Construction Line
- ⊞ Planned Road as Line

- ▬ Temporary Flight Restriction
- ▬ Fire Edge
- ▬ MT/ID State Boundary
- ▬ Proposed Great Burn Wilderness Area
- ▬ FS Wilderness Boundary

- Fire History**
- 1985 - 1989
 - 1990 - 1994
 - 2000 - 2004
 - 2005 - 2009
 - 2010 - 2014
 - 2015 - 2020

- ⊞ Aerial Hazard
- ⊞ Dip Site
- ⊞ Helispot
- ⊞ Division Break
- ⊞ Drop Point
- ⊞ Value at Risk
- ⊞ Other
- ⊞ Repeater
- ⊞ Structures
- ⊞ Mile Marker
- ⊞ Paved FS Road
- ⊞ Gravel Road
- ⊞ Dirt Road
- ⊞ Unimproved Road



Datum: North American 1983
Scale: 1:27,000
CIMT15 GISB Updated: 7/21/2021 2056